

Barholm Brook Improvement, LDW 27278. Estimated cost: £13,450

The work, carried out in conjunction with the King Street Scheme, was completed in September by the construction of farm access bridges, and compensation claims were in hand.

Bisbrooke Brook Pioneering Scheme, LDW 26459. Estimated cost: £7,272

A small amount of work was carried out to complete the scheme.

Morcott Brook Pioneering Scheme, LDW 26527. Estimated cost: £5,176

The scheme carried out partly by contract and partly by direct labour was completed in June.

Great Easton Brook Improvement, LDW 26918. Estimated cost: £6,322

Some restoration work completed the improvement. It is proposed to build a flood storage reservoir to alleviate flooding in the village.

Foxton Brook Pioneering Scheme, LDW 26295. Estimated cost: £3,850

Pioneering work was completed in September.

River Jordan Pioneering, LDW 26376. Estimated cost: £4,225

Work was completed in August.

Werrington and Paston Brook Improvement Scheme, LDW 27452. Estimated cost: £56,130

Improvement work on the two brooks to the north of Peterborough began in January, and good progress was made.

East Glen and West Glen Improvement Scheme, LDW 27692. Estimated cost: £54,920

The scheme began in November, and channel works were complete by the end of the year. Installation of the siphonic weir, bridge underpinning, and the spreading of spoil to reinstate the banks remains to be done.

West Glen Improvement Scheme, LDW 27693. Estimated cost: £26,150

Improvement work on the River West Glen from Corby Glen to Boothby Pagnell was substantially complete. Some fencing and ground restoration were outstanding.

Medbourne Brook Improvement Scheme, LDW 27608. Estimated cost: £39,600.

Medbourne has been particularly susceptible to flooding, and a scheme was approved. The brook through the village was lined in part with precast concrete units. The scheme will be completed by some pioneering work and reinstatement.

Eye Brook Improvement Scheme, Welland to Reservoir, LDW 27384. Estimated cost: £11,880.

Work on this scheme which began early in the year was completed up to Caldecott Bridge. Negotiations with land owners were in hand to allow the scheme to be completed.

Eye Brook Pioneering Scheme upstream Reservoir, LDW 26750. Estimated cost: £8,600

Pioneering work commenced upstream of Eye Brook Reservoir and will be continued after the 1973 harvest.

North Level Improvement, Newborough, LDW 27655. Estimated cost: £231,202

Work began in October on a major scheme to improve fen drainage in the Newborough District by means of a pumped outfall to the River Welland. Channel works by Direct Labour were substantially completed. Contract work on the pumping station started in March, and it is hoped that the scheme will be commissioned in October, 1973.

North Level Improvement, Postland, LDW 27656. Estimated cost: £170,800

This scheme, complementary to that at Newborough, also involves substantial channel works and a pumped outfall. The channels were completed by Direct Labour, and contract work began on the pumping station. It is hoped to complete the work in September, 1973.

Brook Drain Improvement. Estimated cost: £135,400

The scheme to drain extensive New Town development at Bretton, Peterborough via Brook Drain and Maxey North Drain to a pumping station at Folly River, Peakirk was referred to in the Seventh Annual Report. Channel improvement and the construction of the pumping station were substantially completed. It is hoped to complete the remaining work, including a culvert under the main East Coast Railway Line, to allow commissioning in September, 1973. The cost is to be met by the Development Corporation, and the City Council.

River Nene—Foul Anchor Improvements, LDW 23492. Estimated cost: £145,294

Some 6,940 tons of stone were placed in stone toe and batter over a length of 550 metres, and the work was nearing completion.

River Nene—Protection Works near New Dyke Farm, LDW 27493. Estimated cost: £188,104

Work began on a stabilisation and protection scheme for the tidal bank downstream of Wisbech and will continue over the next two years. Some 9,500 tons of stone were placed.

River Nene—Protection Works at Horseshoe Corner, LDW 26863. Estimated cost: £55,550

Protection work on the tidal bank continued on some 410 metres on both sides of the river with the placing of 4,475 tons of stone and 8,500 faggots.

River Nene—Cromwell Road to Bevis Hall, LDW 23419. Estimated cost: £109,600

Stone stabilisation of both banks was completed. The Department of the Environment are to make a contribution towards the cost of the work on the right hand bank, which is in close proximity to the A47 trunk road.

River Nene—Whittlesey Wash Cradge Bank Improvement, LDW 24946. Estimated cost: £42,600

The automatic sluice gate at Stanground was commissioned in October, and further stone protection was provided on the cradge bank.

River Nene—Bank Protection upstream Dog-in-a-Doublet Nos. 5 and 6, LDW 26917, 27536. Estimated cost: £16,588

Asbestos sheet piling was used in the protection of this non-tidal section of river. A small amount of fencing remains to complete the work.

River Nene, Whilton Branch, Long Buckby to Daventry, LDW 26934. Estimated cost: £10,887

This scheme, mainly to provide for increased surface water run-off from Daventry's overspill development, was completed. Daventry Corporation are to meet 75% of the cost of the scheme. The remaining 25% was accepted as an agricultural improvement.

Willow Brook Improvement Scheme, LDW 27149. Estimated cost: £28,160

Some 400 yards of channel improvement remain to be completed. The continuing expansion of Corby New Town may make it necessary to carry out further work.

Southwick Brook Improvement Scheme, LDW 26932. Estimated cost: £2,260

A small scheme to provide better tile drainage was completed in October.

Harpers Brook Improvement Scheme, LDW 25861. Estimated cost: £130,430

Restoration work was completed early in the year. A supplementary scheme to replace four access bridges affected by scour was submitted to the Ministry.

Alledge Brook Improvement; Stage II, LDW 26993. Estimated cost: £12,960

This work was completed, and compensation claims were being settled.

River Ise Improvement, LDW 27254. Estimated cost: £57,650

The flood storage reservoir at Clipston was completed during the summer. Some restoration is required to finish the scheme.

Grendon Brook Improvement, Stage II, LDW 26199. Estimated cost: £83,580

This scheme comprising two flood storage reservoirs at Yardley Hastings and a third reservoir at Denton was substantially completed. Remedial work on slips and underdrainage to reservoirs will finalise the scheme.

Knuston Brook Improvements, LDW 27322. Estimated cost: £22,460

In consequence of complaints of flooding and waterlogged land which have been made for some years the Knuston Brook was designated main river.

Pioneering and dredging began in August and was completed by March. The provision of access bridges will complete the work during 1973.

Whiston Brook Improvements, LDW 27255. Estimated cost: £18,450

This scheme on recently designated main river will provide flood relief for Whiston and benefit agricultural land in the vicinity. Dredging and culverting work were completed by March. Work on step weirs and ground restoration will complete the scheme.

River Nene, Bedford Road to Nunn Mills Improvement, LDW 27681. Estimated cost: £80,000

Work on a comprehensive drainage improvement and flood storage scheme in consequence of the Northampton expansion commenced in February. The Ministry accepted that the Land Drainage benefit was £80,000, and the first stage providing piled bank protection for the Mid-summer Meadow swimming pool was completed by March.

Whilton Branch, Weedon to Long Buckby, LDW 26044. Estimated cost: £55,577

Spoil spreading and minor restorative works completed this scheme. Compensation was being settled.

Billing Brook Improvement, Estimated cost: £68,000

A channel improvement scheme to accommodate surface water discharge from Northampton Development at Billing was completed. The cost of the works was met by the Northampton Partnership Authorities.

Abington Brook Improvement. Estimated cost: £15,000

Work commenced on this improvement required to accommodate surface water run-off from urban development in the small catchment. The cost is to be met by Northampton Borough Council.

North Level Improvement—6th District, LDW 27659. Estimated cost: £53,000

Work commenced in March on a major scheme providing for improvement of Padholme Drain in conjunction with a pumped outfall and balancing reservoir. The land drainage element of £53,000 relates to approximately one-third of the total cost, the remainder being met by Peterborough City and Development Corporation as the Eastern Industrial Estate will contribute substantially to the flow.

Daventry Reservoir to Grand Union Canal. Estimated cost: £90,000

An 870 metre length of watercourse between Daventry Reservoir and the Grand Union Canal was realigned with precast concrete lining units. The new channel was necessitated by the Daventry "overspill" Expansion and will convey a regulated flood discharge from the British Waterways Reservoir. The works were financed by Daventry Borough Council.

(ii) Future Works Agreed in Principle

Peterborough Expansion

It is proposed to discharge surface water from Paston Township to the Car Dyke/Folly River system, and that will necessitate an improvement of the Folly River from Peakirk to Fen Bridge and the installation of a gravity sluice near the new Peakirk Pumping Station. The Development Corporation were informed that they must accept the cost of this work.

The final stage of the Brook Drain and Folly River scheme will involve uprating of the pumping station, and that work will probably be required in the late 1970's.

North Level

Design work proceeded on Part II of the North Level Scheme, in respect of those parts of the District that drain to Cross Guns and Dog-in-a-Doulet Pumping Stations. Pumping capacity will be increased to the 20 cusec/1,000 acres standard applied to Part I.

Northampton Expansion

Agreement was reached on work estimated to cost £73,000 necessary to accommodate run-off to the Ecton Brook.

Design work on the flood regulating reservoir at Weston Favell was proceeding.

Discussions were proceeding with the Partnership Authorities regarding improvement schemes for the Brampton and Kislingbury branches of the River Nene and for the Wootton Brook consequent upon the development.

A scheme was agreed for the improvement of Hardingstone Dyke to accommodate run-off from the Southern District. A 20 acre storage reservoir is to be provided.

Wellingborough Expansion

Negotiations were proceeding with the Town Expansion Authorities, and the additional run-off from the new development was calculated. Outline schemes were prepared for the river works required to cater for the additional run-off, and budget estimates were prepared.

(iii) Other matters Relating to Grant Aided or Other Works

Nene Outfall

The Seventh Annual Report referred to silting of the flood channel west of Whiting Beacon and North-East of Big Annie Beacon.

A tendency to accrete eastwards had developed.

The provision of river training works to combat these conditions is being considered.

Welland Outfall

The annual survey carried out in conjunction with the Lincolnshire River Authority was somewhat curtailed by bad weather conditions.

Proposals for the further extensions and improvement of the training walls were in hand.

Capital Expenditure

Capital expenditure on Land Drainage works amounted to £694,043. Of this sum £247,749 was financed by special contributions from local authorities and private individuals, £121,588 was financed from revenue, and £324,706 from government grants.

Expenditure on grant aided schemes amounted to £507,174, being £84,810 in excess of the Capital Expenditure Ceiling, which was increased from £410,000 to £426,493.

Expenditure in excess of the Capital Expenditure Ceiling reduced the effective rate of grant to 61 per cent, but the Capital Expenditure Ceiling for 1973/4 was increased in consequence by approximately £31,545.

2. MAINTENANCE

Weedcutting was carried out on 235 miles of main river, and 70 miles, including all sea and tidal banks, were cut twice to meet local requirements.

The trend away from hand roding continued.

Fourteen weedcutting launches and three floating elevators were used on the major channels.

The use of weedcutting buckets mounted on hydraulic excavators was extended, and some 60 miles of watercourse were dealt with in that way.

Tractor mounted Barford and McConnell cutters and Allen Scythes were used on the banks.

Vermin destruction was carried out regularly.

In the Welland Catchment maintenance dredging was carried out on the River Glen above Tongue End Bridge at Marsh Road Sluice and on Maxey Cut. Dredging on the River West Glen revealed 500 explosive devices which were dealt with by a bomb disposal unit.

Further dredging was undertaken on Paston Brook and at Rockingham.

In the Nene Catchment dredging was carried out at lower Wellingborough, Irthlingborough, on North Brook, and at Flore Mill.

New steel pointing doors were installed on the Nene navigation locks at Elton, Warmington, Wansford, Waternewton, Alwalton and Cotterstock.

The locking mechanisms on all the Nene navigation guillotine doors were replaced.

Regular bank inspections were made, and the Wash Counter Bank was raised at Four Mile Bar by material dredged from the River Welland.

Scour in the toe of the bank at Tallington Cut was stoned, and 100 tons of stone were used in repairing settlement in section 3 of the Outfall of the River Welland bank.

Repair work on slips at Nettle Bank was completed.

Satisfaction was expressed by many boat owners on the high standard of the navigation and river maintenance.

3. WORK IN INTERNAL DRAINAGE DISTRICTS

Administered Boards

Two Internal Drainage Boards are administered, namely the Nene Valley Drainage and Navigation Improvement Commissioners (First District), above Northampton, and the Nene Valley Drainage and Navigation Improvement Commissioners (Second District) between Peterborough and Northampton.

In the First District 2 miles of watercourse were roded, and in the Second District 9 miles were roded.

No capital works were undertaken.

4. FLOODS

No exceptionally high discharges occurred during the year. Rainfall was below average each month from April to November, and heavy rain on the 1st and 6th December produced the highest discharges of the year. Typical maximum discharges are shown in the table below. Rainfall from January to March was lower than average, and no further high discharges occurred.

<i>Welland Basin</i>	<i>1972 December</i>	<i>Previous Highest</i>	<i>Nene Basin</i>	<i>1972 December</i>	<i>Previous Highest</i>
<i>Site</i>	<i>m³/sec.</i>	<i>m³/sec.</i>	<i>Site</i>	<i>m³/sec.</i>	<i>m³/sec.</i>
Tixover	18.319	56.600 May 1967	Harrowden	13.329	17.772 May 1967
Tallington	33.401	62.260 May 1967	Harper's Brook	6.509	7.896 March 1970
Kate's Bridge	4.625	34.520 November 1968	Willow Brook	4.816	7.981 March 1969
			Orton	46.196	88.721 March 1969

5. DRAINAGE CHARGES

The setting up of records for levying Drainage Charges was virtually completed. The income therefrom, based on the current precept, will be of the order of £27,000 per annum.

6. STATUTORY SCHEMES FOR INTERNAL DRAINAGE BOARDS

North Level Internal Drainage District

As was stated in the Seventh Annual Report, the Order amalgamating the North Level, the Sub Districts, and the Tydd, the Leverington, and the Wisbech Northside Districts was (subject to the exclusion of the Eastfield Industrial Estate in Peterborough New Town) duly confirmed by the Minister, and the 1st April 1973 was "the appointed day".

The Draining of the Great Level of the Fens Act of 1649 divided the Bedford Level into the North Level, the Middle Level and the South Level. The First North Level Act 1753 established the North Level Commissioners as an independent drainage Board and defined the five sub districts as they then were.

The new Board are thus the direct successors in this part of the Great Level of the Fens to the Bedford Level Corporation and the North Level Commissioners, and it is satisfactory that that name is retained in their title. The Order should therefore be regarded, not as terminating the 220 years distinguished record of the North Level Commissioners, but rather as yet another stage in the evolution of drainage administration in the Fens lying between Peterborough and the Nene Outfall, which began with the Lynn Law of 1630.

General Review

As was stated in the Seventh Annual Report, an Ad Hoc Committee was appointed under the Chairmanship of the Vice Chairman of the Authority

“to review the internal drainage districts and to report.”

The Ad Hoc Committee published their Report on the 10th June. It was probably the most comprehensive review which has been made of internal drainage districts in the Fens and it accorded with the statement by the Parliamentary Secretary to the Ministry of Agriculture in the Parliamentary proceedings on the Essex River Authority Bill, when he said some drainage districts were too small by modern standards and some rationalisation was necessary, but the need could be met by local initiative within a river authority area. The Ministry's Consultative Paper on Land Drainage expressed the hope that regional land drainage committees of Regional Water Authorities would use their powers to ensure a satisfactory rate of progress where rationalisation was called for. The Ad Hoc Committee, anticipating this aspiration, summarised their unanimous recommendations as follows:

- (i) That, assuming the draft 4(1) (b) Order for the North Level, the Tydd, Leverington and Wisbech Northside Districts is confirmed, no further alteration should be made to the District as defined by that Order.
- (ii) That no alteration should be made to the Feldale District.
- (iii) That the advantages and disadvantages of abolishing the Nene Washlands Commissioners, and of the Authority taking over the functions and raising a General and/or Special Drainage Charge be examined, but that otherwise no alteration be made.
- (iv) That there is a very strong case for the amalgamation of the Hundred of Wisbech and the Waldersey Districts, but as such an amalgamation would still not create a strong viable District it could be deferred until a larger reorganisation can be effected.
- (v) That the Wingland District should remain as it is, at least until such time as an amalgamation with adjoining Districts in the Great Ouse Area may be possible.
- (vi) The Westside Marshes District should remain as it is, although the advantages and disadvantages of the Authority taking over the functions and financing work from a General and/or Special Drainage Charge should be examined.
- (vii) That the South Welland, the South Holland Embankment, the South Holland, the Holland Elloe and the Sutton Bridge Boards be amalgamated.
- (viii) That the Deeping Fen, Spalding and Pinchbeck Board, the Baston, Langtoft and the Deepings Board, the Maxey Board and the North Welland Board be amalgamated.

They pointed out that the recommendations were made having regard to the circumstances then prevailing, and that it should not be assumed that the recommendations excluded the possibility of further reorganisation and consolidation as circumstances might change.

They suggested that if their recommendations were accepted Schemes should be initiated before the responsibilities of the Authority were transferred to the Regional Water Authority.

It was resolved:

“That the Ad Hoc Committee be congratulated on the Report of 10th June 1972 reviewing the Internal Drainage Districts; that their recommendations be accepted in full; and that the Clerk be instructed to proceed with the drafting of such 4(1) (b) Schemes as are necessary to give effect to those recommendations.”

The implementation of the recommendations is referred to under the appropriate headings, and in consequence the 26 Districts existing at the beginning of the year will be reduced to 9 Districts.

Welland and Deepings Internal Drainage District

A scheme to amalgamate the Deeping Fen, Spalding and Pinchbeck, the Baston Langtoft and the Deepings, the Maxey, and the North Welland Districts into a District to be called “the Welland and Deepings Internal Drainage District” was accordingly promoted. It is gratifying to record that the four Boards made no objections to the Scheme, and it was duly confirmed. The appointed day was the 1st June 1973.

South Holland Internal Drainage District

A scheme to amalgamate the remaining Pool Districts—South Holland, South Welland, South Holland Embankment, Holland Elloe and Sutton Bridge—into a District to be called “the South Holland Internal Drainage District” was then promoted. The Scheme was placed on deposit on the 12th March, and it is satisfactory to record that it appears that the five boards will not make any objection.

FISHERIES

1. GENERAL REPORT

As stated in the Seventh Annual Report, the number of fish caught in the Middle Nene have been declining. It was therefore decided to carry out an extensive restocking of this area by importing large quantities of roach from Denmark.

Two deliveries each of ten tons were arranged, and a storm sewage tank at Peterborough City Council's Fengate sewage disposal works was used as a holding pond pending transfer of the fish to various locations on the river. The first consignment was delivered in good condition, but the second was delayed by transport difficulties on the Continent and storm conditions in the North Sea and on arrival at Peterborough, about a tenth had died in transit.

The fish were released into the River Nene and the River Welland—and the details are given below.

Results of matches were about average, but several good weights were reported. On the 16th July a Spalding angler caught 21 bream of a total weight of 145 lbs. (65.77 kg.) in the Vernatts Drain. In a competition on the South Holland Main Drain at Clifton's Bridge on the 13th August, the winner caught 73 lbs. 3½ ozs. (33.21 kg.) of bream, and the top ten weights were all in excess of 22 lbs. (9.98 kg.). The winner of a match held on Kettering, Thrapston and District Angling Association's waters at Titchmarsh on the 8th October had a weight of 30 lbs. 5 ozs. (13.75 kg.) of roach, breaking the previous Club record set in 1958. On the 14th October the winner of a match held on the Nene at Oundle caught 42 lbs. 3 ozs. (19.14 kg.), mainly of bream. At the beginning of February, three Peterborough anglers caught 144 lbs. (65.32 kg.) of pike from the River Welland at Crowland.

It has been decided to establish a trout hatchery and rearing ponds for Empingham Reservoir, and a pilot hatchery was constructed at Horn Mill on the North Brook. Some 14,000 eyed rainbow trout eggs were laid down in February. Hatching commenced, and no undue difficulties were experienced, apart from an occasional excess of silt in the feeder stream. The hasty construction of a sand filter proved successful in keeping down the silt in the pilot plant.

River Nene—North Bank Fishery

Three hundred and fifty five matches were held, in which 17,890 pegs were reserved, and returns were received from 168 matches.

The highest winning weight of 19 lbs. 13 ozs. (8.99 kg.) was 2 lbs. 3 ozs. (0.99 kg.) less than that of the previous season. The total weight of 1 ton 12 cwt. 85 lbs. (1664.3 kg.) for the top ten anglers in each match gave an average weight per rod of 2 lbs. 2 ozs. 15 drams (0.99 kg.) and compared with 2 lbs. 9 ozs. 15 drams (1.19 kg.) in 1971/72, 2 lbs. 8 ozs. 13 drams (1.14 kg.) in 1970/71 and 2 lbs. 12 ozs. 3 drams (1.25 kg.) in 1969/70.

Monthly totals for the first ten anglers in all matches were as follows:

June..	..	334 lbs. (151.5 kg.)	November ..	58 lbs. (26.3 kg.)
July	885 lbs. (401.4 kg.)	December ..	22 lbs. (10.0 kg.) One Match
August	1,063 lbs. (482.2 kg.)	January ..	58 lbs. (26.3 kg.)
September	716 lbs. (324.8 kg.)	February ..	No Matches
October	500 lbs. (226.8 kg.)	March ..	33 lbs. (15.0 kg.)

The Nene Championship was held on the 15th October and was won for the second successive year by R. Marlow of Leicester with a weight of 19 lbs. 13 ozs. (8.99 kg.) compared with 23 lbs. 15 ozs. (10.46 kg.) the previous year.

River Welland—Crowland (Kennulph's Stone) to Spalding (Locks Mill)

Three hundred and forty three matches were held in which 24,465 pegs were reserved, and returns were received from 168 matches.

The highest winning weight of 54 lbs. 14½ ozs. (24.91 kg.) was 15 lbs. 15½ ozs. (7.25 kg.) greater than that of the previous season. The total weight of 2 tons 7 cwt. 28 lbs. (2,400.5 kg.) for the top ten anglers in each match gave an average weight per rod of 3 lbs. 2 ozs. 6 drams (1.43 kg.) compared with 2 lbs. 14 ozs. 1 dram (1.31 kg.) in 1971/72, 3 lbs. 6 ozs. 5 drams (1.53 kg.) in 1970/71 and 3 lbs. 1 ozs. 7 drams (1.40 kg.) in 1969/70.

Monthly results were as follows:

June..	..	609 lbs. (276.2 kg.)	November ..	93 lbs. (42.2 kg.)
July	1,966 lbs. (891.8 kg.)	December ..	No matches
August	933 lbs. (423.2 kg.)	January ..	19 lbs. (8.6 kg.)
September	1,209 lbs. (548.4 kg.)	February ..	9 lbs. (4.1 kg.) One Match
October	434 lbs. (196.9 kg.)	March ..	20 lbs. (9.1 kg.) One Match

The Welland Championship was fished on the 8th July when the winning weight was 28 lbs. 6½ ozs. (12.89 kg.) compared with 38 lbs. 15 ozs. (17.66 kg.) the previous year. The proceeds from this match are given to various charitable organisations, and the sum of £1,720 has been raised in the 13 years that it has been held.

The 2nd Division of the National Angling Championship was held on the River Welland and Coronation Channel on the 19th August, and was won with an individual weight of 54 lbs. 14½ ozs. (24.91 kg.)

Coronation Channel, Spalding

One hundred and seventy two matches were held in which 6,602 pegs were reserved, and returns were received from 93 matches.

The highest winning weight of 19 lbs. 11 ozs. 8 drams (8.94 kg.) was 8 lbs. 14 ozs. 8 drams (4.04 kg.) less than that of the previous season.

The total weight of 17 cwt. 93 lbs. (905.8 kg.) for the top ten anglers in each match gave an average weight per rod of 2 lbs. 2 ozs. 5 drams (0.97 kg.) compared with 2 lbs. 0 ozs. 3 drams (0.91 kg.) in 1971/72, 1 lb. 13 ozs. 7 drams (0.83 kg.) in 1970/71, and 2 lbs. 8 ozs. 10 drams (1.15 kg.) in 1969/70.

Monthly results were as follows:

June..	..	202 lbs. (91.6 kg.)	November ..	No matches
July	654 lbs. (296.7 kg.)	December ..	23 lbs. (10.4 kg.) One Match
August	428 lbs. (194.1 kg.)	January ..	24 lbs. (10.9 kg.) One Match
September	414 lbs. (187.8 kg.)	February ..	32 lbs. (14.5 kg.) One Match
October	196 lbs. (88.5 kg.)	March ..	24 lbs. (10.9 kg.) One Match

Bugbrooke Trout Water

The Bugbrooke Trout Water is on three miles of the Upper Nene between Upper Heyford and Kislingbury. It was restocked in June and July, when four hundred 10/11 inch brown trout were introduced on each occasion.

There was an increase in the number of Day Tickets sold. Comparative statistics are as follows:

	1964	1965	1966	1967	1968	1969	1970	1971	1972
No. of Day Tickets sold	161	135	375	514	453	501	225	236	270
No. of completed Day Tickets returned ..	136	112	270	308	309	305	151	147	179
No. of anglers catching one or more trout ..	60	33	138	208	192	142	68	75	105
No. of anglers catching bag limit (six trout) ..	12	7	7	13	13	12	3	3	4

The heaviest fish was a brown trout weighing 2 lbs. 2 ozs. (0.964 kg.).

Because of the regular financial loss on this fishery it was decided not to seek to renew the Fishing leases when the 12 year term expired on 31st December.

Eye Brook Reservoir

Eye Brook Reservoir (controlled by Corby (Northants.) and District Water Company—the Water Department for British Steel's Corby Works) was visited by 3,333 anglers (17,995 rod days), compared with 3,133 anglers (16,964 rod days) in the previous year. Some 21,406 fish were caught, of an average weight of 1.15 lbs., the best being a brown trout of 3 lbs. 9 ozs.

River Gwash

The Gwash Fishing Club controls the trout water on the River Gwash. Fishing was about average, but would have been better but for the bad weather in May and June. All fish were in good condition, and the river has a good stock of brown trout and grayling.

Pitsford and Ravensthorpe Reservoirs

The Mid-Northamptonshire Water Board control trout fishing on Pitsford and Ravensthorpe Reservoirs.

A total of 7,768 Day Tickets were sold at Pitsford, and returns received from 60% of the anglers showed that 3,377 brown trout and 3,106 rainbow trout were caught. The best brown trout weighed 3 lbs. 11 ozs. (1.67 kg.) and the best rainbow weighed 3 lbs. 6 ozs. (1.53 kg.).

A total of 4,544 Day Tickets were sold at Ravensthorpe, and an 80% return showed that 2,833 brown and 2,940 rainbow trout were caught. The best fish was a brown trout weighing 5 lbs. (2.27 kg.).

Willow Brook

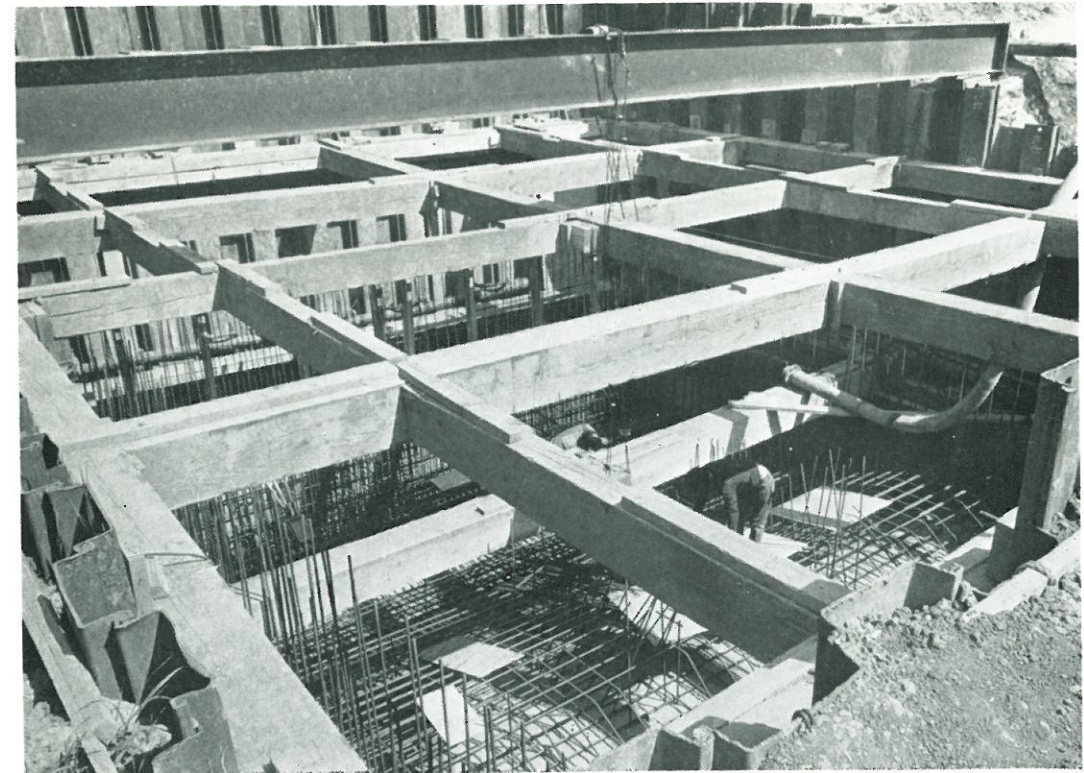
Willow Brook was restocked with brown and rainbow trout. The improvement in the fishing was maintained, the results being above average.

Restocking

Restocking was carried out throughout the year, but there was great difficulty in obtaining sufficient fish from local reservoirs and lakes or from trout waters. As stated above, nine tons of roach were imported from Denmark to supplement local stocks.

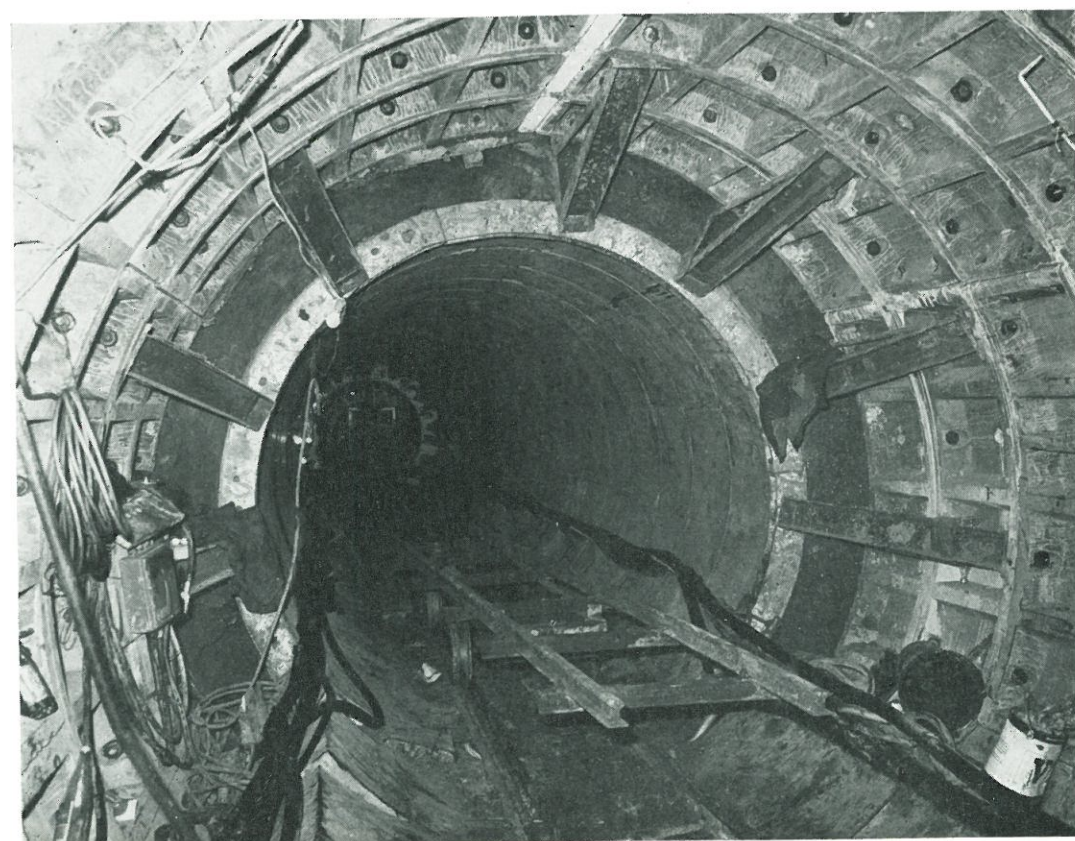
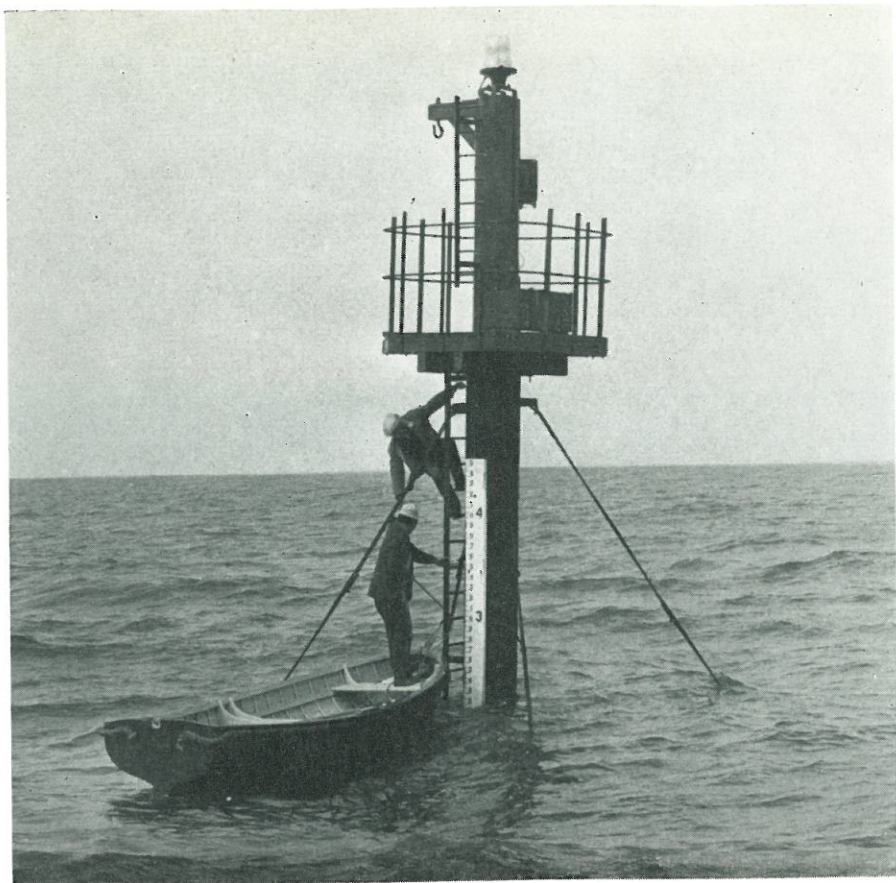
Details of restocking are as follows:

Release Point	Source	Number	Species
RIVER NENE:			
Duston Pond at Upton	207	Carp, perch, roach, tench, trout
Northampton Pond at Northampton	22	Carp
Weston Favell Pitsford Reservoir	846	Roach, perch
Billing Denmark	2,500	Roach
Earls Barton Denmark	2,500	Roach
Earls Barton Pond at Upton	200	Roach
Wellingborough Denmark	2,500	Roach
Ditchford Denmark	5,000	Roach
Higham Ferrers Denmark	5,000	Roach
Irthlingborough Pond at Irthlingborough	150	Roach, rudd
Ringstead Denmark	2,500	Roach
Woodford River Ise, Rushton	81	Chub, perch, pike, roach
Denford Pitsford Reservoir	170	Perch, roach



(above) Postland Pumping Station during construction

(below) Empingham Reservoir View showing work in progress placing material in core of dam downstream of trial bank



(above) Big Annie Beacon, Wisbech Channel
Water level reading during annual
hydrographic survey

(below) Empingham Reservoir
View showing start of 100 inch supply tunnel,
with shield at face

(above) River Nene
Piling at Nunn Mills, Northampton
(below) North Level Improvement Scheme
—new channel at Newborough

<i>Release point</i>		<i>Source</i>	<i>Number</i>	<i>Species</i>
Thorpe	..	Denmark	5,000	Roach
Pilton	..	Denmark	5,000	Roach
Oundle	..	Denmark	5,000	Roach
Elton	..	Denmark	2,500	Roach
Fotheringhay	..	Denmark	2,500	Roach
Yarwell	..	Denmark	2,500	Roach
Wansford	..	Denmark	2,500	Roach
Alwalton	..	Denmark	2,500	Roach
Milton Ferry	..	Denmark	2,500	Roach
Peterborough	..	Denmark	2,500	Roach
North Bank	..	Thorney River	182	Bream, perch, pike, roach, rudd, tench
RIVER WELLAND:				
Gretton	..	Denmark	2,500	Roach
Tinwell	..	River Gwash	304	Bream, chub, dace, grayling, perch, pike, roach, tench
Tinwell	..	Maxey Cut	539	Bream, chub, dace, perch, pike, roach
OTHER WATERS:				
Oakham Canal	..	Pond at Oakham	200	Rudd
Gravel Pit, Northampton		Pitsford Reservoir	1,326	Perch, roach
Pond at Wansford	..	Pond at Cranford	503	Carp, tench
Longthorpe Stock Ponds		New Wryde Drain	690	Bream, perch, roach, rudd, tench
Longthorpe Stock Ponds		New South Eau	396	Bream, perch, roach, tench
Longthorpe Stock Ponds		Moretons Leam	569	Bream, carp, roach, rudd, tench
Grendon Quarter Pond	..	Park Pond, Grendon	100	Bream, roach
Abington Park Middle Lake	..	Abington Park Bottom Lake	872	Carp, chub, perch, pike
Pit at Langtoft	..	River Gwash	500	Chub, dace, grayling, perch, pike, roach, tench
Total:			62,857	
Length range (in inches) of fish used for restocking:				
Bream 6/15	Dace 4/12	Roach 2/10	Carp 3/15	Rudd 4/7
Perch 3/10	Chub 6/13	Pike 4/24	Tench 4/25	Grayling 5/11

Fish Mortalities

Some 300 roach, rudd, bream and tench died in a pond at Tydd Fen in April. The pond had an algal bloom, and the mortality was thought to be due to the low concentrations of dissolved oxygen at dawn.

At the end of June, some 100 roach and rudd died in a gravel pit at Maxey. Water quality was satisfactory, but the fish were found to be affected by an aeromonas species of bacteria which was thought to have caused the mortality.

In early July, some 400 rainbow trout died in a holding pond at Ravensthorpe Reservoir. The pond was heavily weeded, and the mortality was again caused by the low dissolved oxygen concentration at dawn.

On the 24th July, 500 roach died in Blatherwycke Lake, but chemical analysis of the water and a bacteriological examination of the fish failed to reveal the cause.

On the 25th July, dabs, shrimps and cockles died in the tidal length of the River Welland, when the water became de-oxygenated, probably due to unsatisfactory discharges of trade and sewage effluent from Spalding.

At the end of July, 65 bream, roach, tench and eels died in Grendon Quarter Pond, and 100