

£1.25



SPALDING 97 FLOWER PARADE

OFFICIAL PROGRAMME



SPRINGFIELDS 97
WORLD OF FLOWERS

SOUTH HOLLAND 97
SPRING FESTIVAL



PLUS
2 WORLD RECORDS

MILES OF MINIS SPALDING '97
& THE BIGGEST CROSS-STITCH
PARTY IN THE WORLD!

ISSN 1354-7577



9 771354 757018



Sir Halley Stewart Field

**SATURDAY
MAY 3rd 1997**

Events happening all day!

Spalding Flower Parade will be even more special this year with Two World Records being set on the day, and a whole host of exciting events taking place throughout the town, particularly at the Sir Halley Stewart Field. COME AND JOIN IN THE FUN!

DON'T FORGET MILES OF MINIS SPALDING'97

A World Record 3.5 miles of moving minis will cover the Parade route!
1.00-2.00 pm



WILL BE 'RIDING THE MILES' AND APPEARING THROUGHOUT THE DAY TOGETHER WITH THE FAMOUS GUNGE TANK!



For further information:-
Tourist Information Centre (TIC),
Ayscoughfee Hall Museum,
Churchgate, Spalding,
Lincolnshire PE11 2RA
Tel: (01775) 725468

Look what's going on at...

THE BIGGEST CROSS-STITCH PARTY IN THE WORLD

A celebration of the Get Stitched Up fund raising campaign
in aid of the

**Simply
Cross-Stitch**

NSPCC

with your hosts Simply Cross-Stitch



THE POACHERS

The 2nd Battalion, The Royal Anglian Regiment, are returning to England after 9 years overseas, come and see The Regimental Display Team with

- COMBAT SIMULATORS • ASSAULT COURSE
- WEAPONS AND EQUIPMENT

ROVER MINI-MOTORSHOW

In celebration of the Miles of Minis World Record, and in conjunction with Wrights, Spalding.



FRESH FLOWER DEMONSTRATIONS



Beautiful
floral
arrangements
by GEEST

HAIR & BEAUTY DEMONSTRATIONS

by WELLA UK in
conjunction with
Steffens Hair and
Beauty



LINCOLNSHIRE COUNTY COUNCIL GREEN BUS

Interactive Information for Kids.

Leverton Materials Handling



EXHIBITIONS

**HOG ROAST • BARBECUE • REFRESHMENTS
AND LOTS, LOTS MORE!**

Saturday, May 3, 1997

SPALDING
FLOWER PARADE 97

BIG welcome for smallest visitors

IT'S THE little ones for whom we reserve the biggest welcome for the 1997 Flower Parade.

Theme for this year is Children's World and the parade will be dedicated to our young spectators.

But there's a welcome too for all of our visitors, who we're sure will be feeling young-at-heart by the end of the parade.

You'll notice a few changes this year - there are extra events through the town on parade day, including two world record attempts.

The Flower Parade itself has also undergone changes. There'll be more people from the district involved, more local children involved and more community groups involved.

Springfields Gardens remains the parade's base, from where the procession will start at 2pm. It will return at about 5pm.

Change is afoot elsewhere in Spalding.

The new £15m shopping

development at Holland Market (near the bus station) is complete and work is continuing on a new shopping centre in Market Place, Spalding.

Close by, scaffolding surrounds the South Holland Centre - the district's civic centre - where National Lottery money will help fund a £2.7m redevelopment.

Regular visitors will know there's more to Spalding and South Holland than just the Flower Parade.

There's a whole bundle of other activities to make sure your stay in the area is as

enjoyable as possible:

★ Springfields Country Fair, float exhibition and gardens, with special events on Saturday to Monday, May 3 to 5 (see pages 21 to 25);

★ South Holland Spring Festival events which will feature a host of entertainment during the week before Parade Saturday and the week following it (see pages 32 to 39);

★ Spalding Carnival on Sunday, May 4, when a second carnival parade of colour and movement -

staged by the community and with a Caribbean theme - will hit the streets (see page 32);

★ More than a dozen churches across South Holland will be beautifully decorated with spring flowers and many also provide refreshments - more details on pages 30/31.

★ New for this year are attempts at two world records, which will also be raising money at the same time.

Before the main parade on Saturday, you will see a spectacular Miles of Minis event along the route while at the same time sewing enthusiasts will be hoping to stage the biggest cross-stitch party in the world at the Sir Halley Stewart Field (see pages 26 and 27).

And don't forget South Holland's five museums, three nationally-known garden centres and three other tourist attractions.

Take a look through this official guide and you'll also find details of some of the parade's unsung heroes and heroines, photographs of South Holland Flower Queen and the Spalding Guardian and Lincolnshire Free Press Flower Parade Prince and Princess, and a special competition for children.

Whether you're here just for Parade Saturday or you're making a weekend or week of it, enjoy the parade and enjoy your stay!

© THIS production is copyright of the Lincolnshire Free Press and Spalding Guardian.

No part of this official flower parade 1997 programme may

be reproduced without our permission.

Published by the Lincolnshire Free Press and Spalding Guardian, Priory House, The Crescent, Spalding, in conjunction with

Springfields and Spalding Flower Parade Committee.

Origination and advertising typesetting by Anglia Newspapers, King's Lynn. Printed by Warners (Midlands) plc, Bourne.

SPALDING
FLOWER PARADE 97

Pages 1-29

SOUTH HOLLAND
SPRING FESTIVAL 97

Pages 32-39

SOUTH HOLLAND
CHURCH FLOWER FESTIVALS 97

Pages 30/31

SPRINGFIELDS
WORLD OF FLOWERS 97

Pages 21-25

SATURDAY, MAY 3, 2PM

SPALDING Flower Parade, now well-established in its new home at Springfields Gardens, will start from there at 2pm and travel in a clockwise direction around the town (see page 4) as last year, and return to the gardens at 5pm.

This year parade organisers have accepted the kind offer from South Holland District Council of some 350 badged marshals who will police the route.

Please co-operate with these volunteers to ensure a pleasant day is enjoyed by all.

At about 1.45pm a van with loudspeakers will leave the gardens to give spectators up-to-the-minute information on the forthcoming parade.

1 POLICE HORSES. By kind permission of the Chief Constable of Nottinghamshire.

2 FLOWER QUEEN 1997. Entered by South Holland District Council, the leading float conveys South Holland Flower Queen Joanna Higgins and her deputy Michelle Clayton - the women chosen to represent the district through the year. Their attendants have been chosen

from six local secondary schools.

3 MELTON MOWBRAY TALLY HO BAND. Secretary Mr A G E Cragg. Sponsored by Geo Adams & Sons Ltd, Spalding, makers of fine Lincolnshire pork pies and other meat products.

4 ON THE BALL. Entered by E Four Sales Ltd, New Covent Garden Market, London - one of the country's leading wholesalers of flowers, especially Lincolnshire daffodils.

5 FLOWER PRINCE AND PRINCESS. Sponsored by Lincolnshire Free Press and Spalding Guardian, South Holland's leading bi-weekly newspapers and publishers of this guide.

The competition forms part of celebrations marking the 150th anniversary of the first issue of the Lincolnshire Free Press. Flower Prince is William Reddin of Spalding and Flower Princess is Sally Fulcher of Holbeach Bank.

Look out for them in the

specially decorated vintage car, by courtesy of Mr Clayton Banks.

6 FIERY DRAGON. A joint entry from Abbey Print, Spalding - quality printers to south Lincolnshire - and KV Agriculture, Gosberton Risegate, Spalding - suppliers of composts and fertilisers throughout the UK.

7 13TH COVENTRY SCOUT BAND. Director Mr R H Newell. This is the band's 32nd appearance in the parade - well done! Its appearance is sponsored by Spalding Churches.

8 COME ON, DAMON. Sponsored by M J Lyon, Sign Design, Spalding, suppliers of adhesive letters for all occasions. Number one again, Sign Design Services are always first when it comes to your sign requirements, produced from computer-cut vinyl in all colours. Self-adhesive logos for your company are also no problem. The company is a division of MJL Welding, leading waste container manufacturer,

linking with Biffa Waste Services, BFI and Hales Waste Control - leaders in the field of waste collection and whose corporate logos are reproduced on Damon's racing car.

9 BREAKDOWN VEHICLE - just in case!

10 ROMSEY OLD CADETS CARNIVAL SHOWBAND. You thought you missed them! Here they are further down the running order than normal and up to their old tricks in their own Children's World - you have been warned. Secretary Mr M Smith.

The zany comedy band is sponsored for a second year by ASB Greenworld Ltd, Sutton Bridge, which is the world's largest compost manufacturers with ten factories worldwide, supplying a range of products to both amateur gardeners and professional horticulturists. See the company at its stand at Springfields Gardens arena and see the band again at noon tomorrow (Sunday) in the arena.

11 CHARITY COLLECTION. Entered by the Rotary Club of South Holland. Please give generously to help support the parade and Save the Children Fund. Club members and their supporters will be joined by a brewer's dray for this parade entry.

12 LOCAL PRIDE. Entered by Moulton Chapel Village Tulptime Committee, this is a first-time entry which will also feature in the committee's own village parade tomorrow.

13 SPALDING YOUTH CENTRE. Members will be echoing the theme of Children's World. A Lincolnshire County Council youth facility, the centre offers an educational and active programme of interest for young people aged 11 to 20. Each year the young people enjoy fun and learning opportunities and regularly raise money for good causes such as hospices, Great Ormond Street Hospital, Children in Need and some of the club's own members who are less fortunate.

Please give generously...

SPALDING Flower Parade is an independent non-profit making organisation which does not receive direct financial assistance.

In 1995 and 1996 a street collection was organised by the Rotary Club of South Holland and last year the parade committee received half the proceeds, amounting to £2,740, with the other half going to Rotary charities.

Unfortunately, we still incurred losses last year but the amount donated was very welcome.

The funds raised by the collection help to pay for the hire of bands which are not all sponsored and other costs which are not recoverable, such as hiring crowd barriers, helping to feed St John Ambulance Brigade members, and making donations to Spalding Flower Lovers' Club who make up the flower arrangements for the floats.

We appeal to you to support this event which next year will celebrate its 40th year.

A street collection will again take place, with Rotarians jingling their collection boxes in their usual entertaining way. Please give generously.

To get you in the mood, the Romsey Old Cadets will precede one of the collecting

vehicles in the middle of the parade.

It will be followed by a second vehicle towards the end of the parade.

by Spalding Flower Parade Committee

● **SPALDING Flower Parade committee also wishes to express its sincere thanks to the following without whose support today's parade could not be staged: all sponsors; South Holland District Council (for providing services); Lincolnshire Police (policing of event); St John Ambulance (first aid cover); Lincolnshire Free Press and Spalding Guardian (publishers of this guide); fire and ambulance services (emergency cover); Lingarden (hire of sheds); Nottinghamshire Police (for police horses); Rotary Club of South Holland (street collection organisers); Swan Street Motors (breakdown vehicle and car hire); Edmondsons (Spalding) (breakdown vehicle and car hire); AS Whitaker & Sons (breakdown vehicle); Geoff Gilbert International (trailers); Chris Eley (trailers); Spalding Flower Lovers Club (flower arrangements); JW Limming (cardboard supply); Ancor Packaging (cardboard supply); Robin Chappell and family (supply of tulip heads and equipment).**

14 MUSIC MAESTRO, PLEASE. Entered by Regent Bingo Club, Spalding. Manager Mr Ray Seldis is a keen supporter of youth activities and welcomes the return to the parade of Spalding Grammar School Big Band with its musical director Mr M Hopkin.

15 MISS JERSEY BATTLE OF FLOWERS
The 1996 winner is Miss Emma Mathew, who will be riding in an open-topped car supplied by Edmondsons (Spalding) Ltd.

16 THE LIVING CLASSROOM. Entered by Lincolnshire National Farmers Union in partnership with Elgro, Marshalls, Univeg and HRI Kirton.

The farm is a living classroom. Farms are an invaluable learning resource, not just on farming issues but to reinforce any subject.

The NFU is committed to ensuring that every child has an opportunity to visit a farm once in their school career.

Farms can help improve students' achievements.

Further details are available from the National Farmers' Union.

17 DERBY SERENADERS INTERNATIONAL BAND

Musical Director Mrs S Simpson. Their costumes will feature traditional Spanish dress.

18 LONG SUTTON AND DISTRICT VETERAN CYCLE CLUB. Secretary Mrs N Rawson. Old machines for the young at heart.

This will be their 37th

annual parade appearance.

19 CHESTERFIELD MUSKETEERS. First time parade entrants - please make them feel at home.

All for one and one for all!

20 THE CHILDREN'S YEAR. Entered by Geest plc.

Geest is a major producer of chilled convenience foods for supermarkets.

The company is also the UK's largest supplier of fresh fruit and salads.

Among the many fresh chilled products Geest manufactures are prepared salads, dips and dressings, soups and sauces, pasta, ready meals, bread and pizzas.

21 YOUNG AT HEART. Entered by Spalding and District Young Farmers Club - offering major fun and fundraising mixed with the serious business of producing food from farm to table.

22 BREAKDOWN VEHICLE - just in case!

23 CHARITY COLLECTION. Entered by the Rotary Club of South Holland.

Please give generously to help support the parade and other charities.

Members and their supporters will be joined by a steam engine for this parade entry.

24 NOAH. Entered by Spalding Churches. Spalding Churches are joining in the fun and colour of the parade this year to share with everyone our thankfulness for the beauty of

God's creation.

Noah and his family and all the animals are escaping from the flood, showing God's concern to save us all.

25 LOONEY TUNES. Entered by Lincolnshire TEC. The Lincolnshire TEC (Training and Enterprise Council) has a wide range of educational, training and development programmes for your people in the county.

We are associated with The Kids' Clubs for Lincolnshire Trust, the South Holland Education Business Partnership, Lincolnshire Careers and Guidance Services Ltd and the University of Lincolnshire and Humberside.

In partnership with our Approved Supplier Network we offer vocational training opportunities for 16 to 24-year-olds under the FastForward and Modern Apprenticeship banners.

Our bandstand-style float features Little Animals - Centre Stage's very own junk band.

This group, which includes young people from local schools and colleges, will be bringing their lively, quirky performances to the parade festivities.

They will be hitting the streets of Spalding with the energy of youth arts and culture - watch out!

26 ALL ABOARD. Entered by Lingarden Ltd.

All aboard - and join the growing number of people buying Lingarden products.

A wide range of bulbs, flowers and produce from Lingarden is available in supermarkets and DIY multiples

nationwide. All these products are of first-class quality and are attractively packed, representing excellent value for money.

27 CAVALCADE OF CARS. Local garages and florists have joined together to provide a mobile kaleidoscope of colour:

★ Edmondsons (Spalding) Ltd (Ford dealers) with Baytree Florists of Weston

★ Swan Street Motors, Spalding (Renault agents) with Flowers 'N' Things of Spalding

★ Spalding Motor Company, Spalding (Hyundai agents) and Flowers 'N' Things of Spalding.

28 DERBY MIDSHIPMAN BAND. This will be their third appearance in the parade. See them again tomorrow (Sunday) in the marching band competition in Springfields Arena at 2.15pm.

29 PUFFING BILLY - THE CHILDREN'S FAVOURITE. Entered by Springfields Gardens. Don't miss the tulips, Country Fair and float display during your visit.

30 TICKETS PLEASE. Vintage Michelin Bus carrying the ever-popular Die Apfeltizers Band.

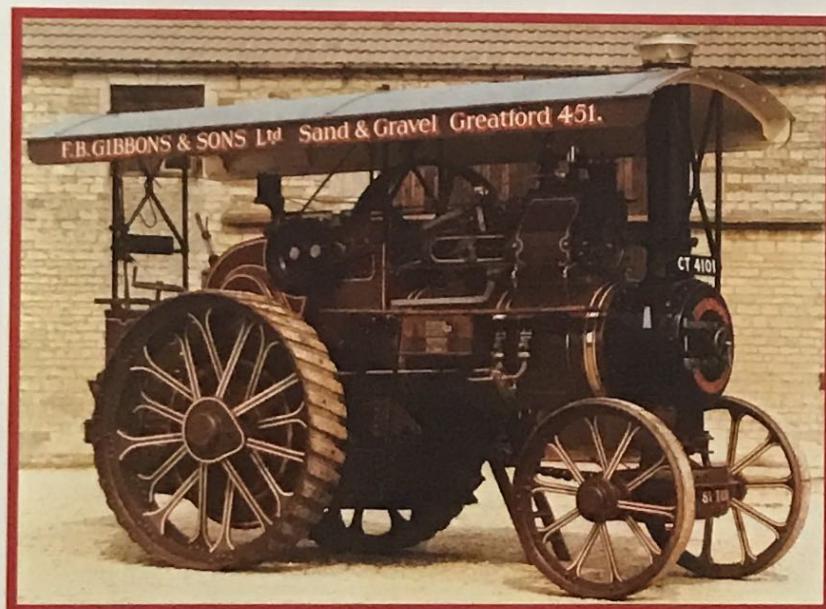
31 BREAKDOWN VEHICLE - just in case!

That's all folks - see you next year for the 40th annual parade - on Saturday, May 2.

Steaming in

LOOK out for this steam engine which will be joined by members of the Rotary Club of South Holland.

They will be asking you to be generous in giving money to their collection for the parade and charities.



FLOWER PARADE ROUTE 1997



Where to be on the big day...

DON'T forget to make sure of a good vantage point from which to see the parade and other events by getting your place early.

The map above shows the route of the parade - with the start and finish point at Springfields Gardens (top right).

Timings below show where you can expect the parade to be during the afternoon.

While the Spalding Flower Parade starts at 2pm, there is plenty to see before that.

★ Hundreds of Mini drivers are expected to take part in a Miles of Minis world record attempt (see page 27), which will take to the parade route from 1pm.

More than 300 stewards will be policing the route from 1pm to ensure your safety, and their work will continue during the main parade.

They want to ensure everyone enjoys parade day safely - please do as they ask.

While the floats are out on the parade route, other entertainment will keep visitors to Springfields Gardens amused - see pages 21-25.

Please also note that the normal yellow coach park at Geest's premises in West Marsh Road (at the top of the map) is NOT being used this year.

■ Approximate timings for the parade are: 2pm - start of the parade

leaves the arena at Springfields Gardens, Camel Gate; 2.15pm - NFU offices, junction of Camel Gate and Holbeach Road; 2.30pm - junction of Holbeach Road and Queens Road; 2.40pm - The Birds, junction of Queens Road and Halmer Gate; 3pm - Cley Hall Drive; 3.10pm - junction of Halmer Gate and Stonegate; 3.20pm - Love Lane (river end); 3.40pm - High Bridge over River Welland; 3.50pm - junction of Hall Place and New Road; 4pm - junction of New Road and Pinchbeck Road; 4.20pm - junction of Pinchbeck Road and West Elloe Avenue; 4.40pm - roundabout at junction of West Elloe Avenue and West Marsh Road; 4.50pm - Holbeach Road and Roman Bank; 5pm - return to festival site, Springfields Gardens

A word of welcome

WELCOME to Spalding and the 39th annual Flower Parade!

Many of you will have seen the parade in previous years; for some of you it is your first visit.

Whoever you are, wherever you are from, you are most welcome.

The floral extravaganza you will see today is the culmination of months of planning, float-building and organising.

The organising committee has worked long and hard to put together the spectacle that has become famous worldwide.

The theme this year is Children's World, reflecting the excitement and enthusiasm of youth.

Many young people will be taking part in the parade - riding on floats, playing in bands, participating in any number of ways.

We wholeheartedly welcome their involvement.

But the parade is not just for youngsters - there is something for everyone from toddlers to grannies!

The parade begins at Springfields Arena, departing at 2pm and returning at 5pm.

There's lots to see and do all around the parade route, so there is no need to be bored!

We expect up to 250,000 visitors to the parade, so for the best view come early!

Don't leave it to the last minute - you may find yourself at the back of a ten-deep crowd!

The four-and-a-half mile route of the parade is unchanged from last year, taking in some of the prettiest parts of the town centre and surroundings.

For the third year running, the Rotary Club of South Holland will be participating in the parade and making a

...From Flower Parade Committee Chairman **ADRIAN JANSEN**

charity collection.

Some of the proceeds help to offset the costs of staging the parade, while the remainder goes to Rotary charities.

If you have enjoyed the parade, please give generously.

The floats will be on display at Springfields Arena for the whole Bank Holiday weekend, so if you cannot get to the parade, then do try to visit on Sunday or Monday.

I guarantee you will not be disappointed.

A new crowd control system will be in place for 1997, so look out for the uniformed stewards.

At the same time, please do not encroach on to the road as the floats pass by.

Drivers' views are very limited and with some of the floats up to 40ft in length, it is impossible for them to see everything.

Finally, the most important thing is for everyone to enjoy themselves.

The organisers work hard for the parade, but we do it because we enjoy it.

Seeing the most magnificent floats going past and the enjoyment on people's faces make it all worthwhile.

Please give the floats and bands a big clap as they pass by.

Join in with smiles and cheers and you will have a wonderful day!

By the way, let's keep our fingers crossed for lovely weather.

Have a great visit to the Spalding area and have a safe journey home.

See you next year!

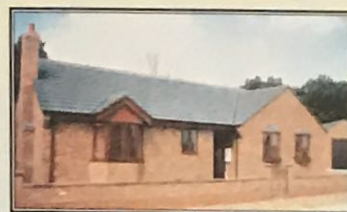


▲ **ADRIAN Jansen**, Flower Parade committee chairman, looking at one of the frames for a parade float. (N449/28)

Let Us Create Your Beautiful Home

There is a dramatic difference in where you live. Consider fresh air, open spaces and peaceful surroundings.

Country Living is a wonderful alternative



Developments currently available at:
Spalding • Holbeach
Moulton • Whaplode
Moulton Chapel
Gedney • Saracens Head
Tansor (Nr Oundle)

We have a range of homes from £75,000 • Part Exchange Considered

Call our team TODAY for our own design brochure

01406 422022 9am-6pm or 01406 371860 After Hours



DGM PROPERTIES

Creators of Beautiful Homes

43 Double Street, Spalding, Lincs PE11 2AA

Please give the floats and bands a big clap as they pass by. Join in with smiles and cheers and you will have a wonderful day!



Youngsters on parade

YOU'LL see scores of children and young people involved in every aspect of the parade.

Not only will they be riding on floats as they normally do, but some will be walking alongside them.

Many of those will be dressed as animals - if you're creature-hunting, look out for the children with the floats from Geest and Spalding Churches.

Young musicians will also be taking part and for the first time, there will be a young flower prince and princess in the parade.

Here we highlight the input of children in a parade with the appropriate theme of Children's World.

Give the children a wave as they pass by...

PLEASE wave to the children on the floats as they pass by - if you're watching the parade near the end of its route, they will have been waving at the crowds for more than two hours.

Children seated on this year's Geest float were all winners or runners-up in a children's art competition held last year for children and grandchildren of Geest employees.

Winning entries were published in an all-colour 1997 calendar - and elements of their design

were incorporated in the design for the company's float.

Sitting on the Geest float (pictured right) will be Reece Bailey (8), Natalie Kendrick (12), Gemma Senior (11), Calum Forsythe (9), Nicola MacLeod (9), Micheala Hare (8), Vicki Henson (7), Dyneaka Johnson (9), Lauren Elsey (8) and Kimberley Lunn (7).

Megan Harrison (7), who was unavailable for our photocall, will also be on the float.

(N545/34A)



Sounds of music will delight crowds

THE SOUNDS of jazz and swing will delight

parade crowds thanks to talented young musicians

from Spalding Grammar School and Spalding High School.

The Spalding Grammar School Big Band will be among young people's bands entertaining you during the parade.

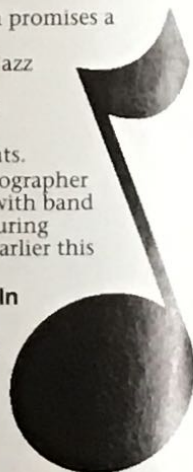
The 15 to 18-year-olds, who play a combination of trumpets, trombones, keyboards and saxophones, are a popular - and regular - attraction at events across South Holland.

Musical director

Mel Hopkin promises a mixture of traditional jazz and swing classics and modern arrangements.

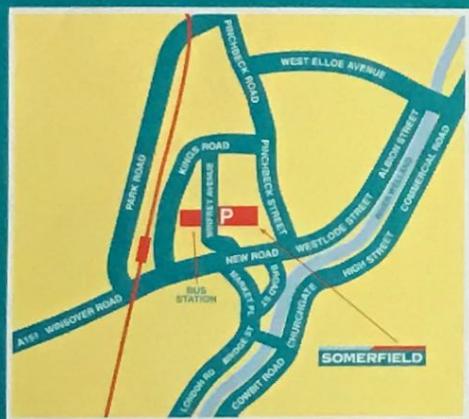
Our photographer caught up with band members during rehearsals earlier this year.

● **LEFT:** In rehearsal for parade day are members of Spalding Grammar School Big Band. (N419/3A)



THE BEST ROUTE TO

Quality
Freshness
Value
and
Service



Winfrey Avenue,
Spalding

SOMERFIELD

Savings that add up





Right Royal day for Sally and William



PRINCESS



Watch out for them on parade

MEET two more young stars of the Children's World show!

They are Lincolnshire Free Press and Spalding Guardian Prince and Princess William Reddin and Sally Fulcher.

They will be riding near the start of the parade in a specially decorated vintage car, courtesy of Mr Clayton Banks.

William (8) of Spalding and Sally (11), of Pennyhill, Holbeach, were chosen from more than 130 entrants to be the newspapers' first junior representatives in the parade.

They will be wearing outfits specially made for parade day.

Entrants came from all over the Lincolnshire Free Press and Spalding Guardian circulation area which takes in a large swathe of south-east Lincolnshire.

And while parade day will be special for the lucky pair, the whole of the year is special for the Lincolnshire Free Press as celebrations marking its 150th anniversary continue.

Exhibitions, a time capsule, special functions and displays are all planned.

Editor Alan Salt said: "We wanted to reflect the theme of this year's parade and to celebrate the newspaper's anniversary.

"The response to the competition was phenomenal."



PRINCE

Watch out! Wild animals about!

LOOK out and don't you get too close - there will be wild animals prowling on the parade route.

Forty of them will be roaming the route, but keeping close by a float showing Noah's Ark.



But spectators have nothing to fear - the animals will be played by children from eight churches in the Spalding area, accompanied by adults playing Noah and family.

Congregation members from those churches decided to get together to enter the float and its aims are manifold, explained the Rev Philip Norwood, of St Mary and St Nicolas Church, Spalding.

"We are very grateful for the parade and we want to do

everything we can to support and encourage it, as well as being grateful for the opportunity of putting across our message.

"We will also be sharing thanks for the beauty of God's creation," he added.

Teamwork is the key for preparations for the ark, with supporters from different churches taking on responsibility for organising the float and its accompanying 'animals'.

Several churches - including some from surrounding villages - also get together to sponsor one of the bands you will see in the parade.

Some also make regular donations to South Holland Spring Festival, the two-weeks of events before and after parade weekend.





① Tudor Court Bourne

A superb development of
2, 3 and 4 bedroom homes.
For further details contact us on
01778 570504

Sales Centre and
Showhomes open 11 am to 5 pm
7 days a week

② The Old Maltings Newark

A superb development of
2, 3 and 4 bedroom homes.
For further details contact us on
01636 612236

Sales Centre and
Showhome open 11 am to 5 pm
7 days a week

③ Woodbank Skellingthorpe Lincoln

A superb development of
3 and 4 bedroom homes.
For further details contact us on
01522 696002

Sales Centre and
Showhomes open 11 am to 5 pm
7 days a week

Prices, specification and finishes
vary throughout developments.

House shown is a photograph of a typical 4 bedroom Alton detached

Don't go
all around
the houses.
Go straight
to Wilcon.

WILCON
HOMES

④ Meadowlands East Retford

A superb development of
3 and 4 bedroom homes.
For further details contact us on
01777 710932

Sales Centre and
Showhome open 11 am to 5 pm
7 days a week

⑤ Flinders Court Spalding

A superb development of
1, 2, 3 and 4 bedroom homes.
For further details contact us on
01775 713042

Sales Centre and
Showhomes open 11 am to 5 pm
7 days a week

⑥ Ushers Court North Hykeham Lincoln

A superb development of
2, 3 and 4 bedroom homes.
For further details contact us on
01522 500847

Sales Centre and
Showhome open 11 am to 5 pm
7 days a week

KEYS HOLIDAYS

Over 65 Cottages,
Houses, Bungalows
and Flats To Let
in the Sheringham, Cromer
and surrounding area,
all personally inspected
by our staff
For a FREE colour brochure
apply to:

G. A. KEY

18 Station Road
Sheringham
Norfolk NR26 8RE
Telephone: (01263) 823010
(after hours ansaphone)

PINE FURNITURE AT PINEWOOD

The Pine Furniture Specialists
YOU'LL BE SURPRISED

Come and see us at:-
**Ralphs Lane,
Frampton West, Boston**
Open Monday-Saturday
8.30am - 5pm
Sunday 10am - 4pm
(01205) 723739

TATTERSHALL MARKET AND GIANT CAR BOOT SALE

Every Sunday
Stalls from
7am onwards

**(01205) 724014
0850 221277**

White Hill Farm

Dried Flowers, Bulbs,
Heathers, Shrubs,
Bedding Plants.

Fresh Vegetables -
Wide selection

Pots, Bird Baths, Garden
Ornaments, Garden Tools at
very, very reasonable prices

Stormafit Leisure Wear

Pine Dressers, Tables, Chairs

Pilgrim Frozen Foods

Wisbech Road, Long Sutton
Telephone: (01406) 364677

STRATHNENE

Pipers & Dancers



Please contact:
KINROSS

Telephone:
(01733) 346896
after 6.30pm



For Weddings, Parties and other Social Events

2 Viney Close, Peterborough

IMPORTANT NEWS FOR EVERYONE!

Phone Call Carpets

offer great choice
AND great value.

Choose your carpets in the
comfort of your own home.

Also Carpet & Upholstery Cleaning

Tel: 01406 364900
Mobile: 0468 363193



GARDEN ORNAMENTS

**FLEET WATER
GARDENS**

Fleet Hargate
Spalding

Telephone
(01406) 425512
10am to 6pm
Seven Days



PLANTS • PUMPS

TROPICAL FISH • AQUARIUMS

TROPICAL FISH • AQUARIUMS

REGENT BINGO CLUB

Westlode Street, Spalding PE11 2AE
(01775) 723098

Always a warm welcome at one of
Britain's fastest growing Bingo Clubs.
Sessions start every evening at 7.30
(Sundays 7.15) and Tuesday &
Saturday afternoons at 2.15

MEMBERSHIP IS FREE:

Just send or take the coupon to the Club

To: Regent Bingo Club, Westlode Street
Spalding PE11 2AE
From Mr/Mrs/Ms

SURNAME
CHRISTIAN NAME
ADDRESS

Please send me a membership card and details
I am over 18 years old

ROGER TUBY FUNFAIR

on the VICTORIA STREET CAR PARK, SPALDING

Thursday	May 1st	6pm-10.30pm
Friday	May 2nd	6pm-10.30pm
Saturday	May 3rd	11am-10.30pm
Sunday	May 4th	11am-10.30pm
Monday	May 5th	11am-10.30pm

Including:

Traditional Dodgems, Waltzers etc
Also Childrens rides, Arcades,
Candy Floss, Toffee Apples
and full supporting staff



BGI CONSERVATORIES

WINDOWS, DOORS & EXTENSIONS

CONSERVATORIES
from
£2,750 + VAT

7 WINDOWS
from
£1,445 + VAT

DOORS
from
£355 + VAT



All Conservatories
in uPVC, Hardwood
or Softwood

Purpose-made to
size and style

10-year Insurance
Guarantee

BIRCHGROVE GARDEN CENTRE, PINCHBECK, SPALDING
Tel: (01775) 680737 • Eves (01046) 370780

How do they do that?

BELIEVE it or not, the glorious floats you will see today start life as metal frames, carefully constructed by parade stalwart Geoff Dodd.

He has been building floats for more than 35 years and knows exactly how their designers and sponsors would like to see the float appear.

He comes on board once designs have been approved by sponsoring companies or groups.

Most floats are designed by Australia-based Kees van Driel who liaises with parade organisers and sponsors by 'phone and fax.

Once Geoff has welded the metal

structures - miles of strips of steel are used - they are covered with polyethylene foam.

Every corner and curve must be covered accurately - for it is on this base that the flower heads are pinned.

Just days before the parade, scores of workers are drafted in to pin on millions of heads and add the final decorations.

Each square yard of foam will need about 1,000 tulip heads to cover it.

After final checks are made in the heading sheds, the floats are moved to their home at Springfield Gardens.

● **RIGHT:** Flower Parade blacksmith Geoff Dodd hard at work preparing one of this year's Children's World floats. (N26/19)



Modest Robin provides tulips

THE man who provides all but a few of the tulip heads you see on the floats has had his enthusiasm and support recognised by parade organisers.

Spalding grower Robin Chappell is well-known as one of the UK's foremost tulip growers.

But it is in honour of his commitment to the parade that Robin has been awarded the Worshipful Company of Gardeners' Trophy.

That is an award, presented annually since 1956, given in recognition of "an outstanding contribution to Tulip Time".



▲ **TULIP** grower Robin Chappell: winner of this year's Worshipful Company of Gardeners' Trophy, pictured at Springfield Horticultural Exhibition, showcase for forced daffodils and other flowers. (N321/3)

Award winner

civic lunch.

Parade organiser Mr Peter Atkinson said: "Robin and his family have given us sterling service."

"They have provided 99 per cent of the tulip heads for the Flower Parade over many years."

"He and his family are also involved in the decoration of the Spalding and District Young Farmers' float and he also supplies several tractors for us to use at parade time and quite a lot of other equipment we use when we set up the floats and when we clear up afterwards."

"Robin is a modest man but his enthusiasm for Spalding Flower Parade knows no bounds."

Previous winners have included churches,

supporting groups and other enthusiastic individuals.

The Master of the Worshipful Company of Gardeners will present the trophy at the annual parade

Tulip grower wins Worshipful Company of Gardeners' trophy

WE GUARANTEE THAT OUR DIAMOND RINGS WILL INCREASE IN VALUE*

*When part-exchanging for another ring of higher value.
(Please ask for details.)

OUR PROMISE:

If within 30 days of purchase you can buy the same quality ring for less will refund the difference.
(We reserve the right to verify details)

VALID WITH YOUR NEXT DIAMOND RING PURCHASE

We will also include a diamond care kit, a slide rule showing value increase over 1-5 years and a customer privilege card.

COME IN AND FIND OUT MORE TODAY!

Hoppers
Jewellers
of Lincolnshire

35 North Street, Bourne
Telephone:
01778 423816
Open 6 days a week

Diamond Ring
Guarantee

Jewellers
Excellence

BEDDING PLANTS

Fully Grown Plants

for as little as 55p for 10 plants
or £2.50 a full tray of 50 plants

Plus patio and basket plants.

Over 40 different varieties.

WE ALSO SUPPLY AND REFILL HANGING BASKETS.

Come direct to the grower.

GLENSIDE NURSERIES LTD

GLENSIDE SOUTH, WEST PINCHBECK, SPALDING. Tel 01775 640520

Situated on the B1180 1 1/2 miles from the Ship Inn, Pinchbeck, or from
West Pinchbeck, 1/2 mile from New Bridge Inn, Bars Bridge, just past
C.G. Godfrey's, opposite Mill.

Open 7 days, end of April-early July, 10am - 5pm

We're here to blow our trumpet!



FastFORWARD ...Modern Apprenticeships

for training and development programmes,
Lincolnshire TEC is on parade.

Aged between 16 and 24? Fancy tapping into
our vocational training opportunities?

Call the TEC on **01775 712833** today!



LINCOLNSHIRE TEC

Lincolnshire's own
Training & Enterprise
Council

DISCOVER

The Butterfly & Falconry Park

LONG SUTTON (OFF A17) LINGS

- ONE OF BRITAIN'S LARGEST WALK THROUGH TROPICAL BUTTERFLY & BIRD HOUSES.
- FALCONRY CENTRE WITH FLYING DISPLAYS OF EAGLES, HAWKS & OWLS DAILY AT 12 NOON & 3PM.
- GIFT SHOP, TEA ROOM & LICENSED RESTAURANT

OPEN MAR 22nd to NOV 2nd
10am - 6pm 7 days a week

New
for '97

REPTILE LAND



IGUANAS &
PYTHONS

TELEPHONE
01406 363833

LINFORDS
FISH - CHICKEN - BURGERS



Food for
all the family

VOTED ONE OF
THE TOP 21
FISH & CHIP
SHOPS IN THE UK

6 Market Place
Market Deeping

Tropikoi

Everything for the fish Keeper
Tropical & Cold Water Enthusiasts
Largest Aquatic Centre In The Area

- Thousands of fish for ponds and aquariums
- Pumps - over 80 to choose from
- Fountains
- Marginal plants
- UV Sterilisers, filters
- Pre-formed ponds inc fibre glass
- 30 year guarantee pond liner up to 26ft wide
- Koi 2" to 18"

Probably The Widest Range Of Aquatic
Goods You Will See In The Area

Open Every Day Except Wednesday
Open Bank Holidays at

Bambers Garden Centre

Lynn Road, West Walton, Wisbech
Telephone: 01945 585458

From King's Lynn, turn right at Little Chef roundabout
off A47 towards Wisbech, 1/2 mile on left
Parking for 300 cars



FLOWER LOVERS' CLUB

● **LEFT:** Meet the flower lovers who put together those beautiful floral arrangements on parade floats, including (front, from left) Jean Thomson (secretary), Lucy Sanders (one of the club's founder members) and Sue Cooper (chairman). (N249/5)

Unsung heroes finally take a bow

HUNDREDS of hours of work - much of it unseen by parade spectators - go into every parade.

And much of that is undertaken by volunteers.

In this special feature, we highlight the work of:

★ the **TRACTOR DRIVERS** who keep the floats moving around the parade route

★ the **FLOWER ARRANGERS** who add finishing touches to the floats and

★ the **CATERER** who helps make sure the visit by the Romsey Old Cadets goes as smoothly as possible.

★ We also feature the sterling work of Lincolnshire Free Press and Spalding Guardian chief photographer **TIM WILSON**, who celebrates 25 years of covering Spalding Flower Parades.

TAKE more than 5,000 blooms - and scores of handfuls of foliage - and you have the start of those stunning floral arrangements you will see on parade floats.

But it takes years of expertise and hours of dedicated work from members of Spalding and District Flower Lovers' Club to create breathtaking displays.

Bloom and spray carnations, gerbera, lilies, gladioli and delphiniums all feature in them.

Visitors often only see one side of each float - and fail to realise how many arrangements they can include.

Last year's South Holland Flower Queen float, sponsored by South Holland District Council, had no fewer than 37 arrangements.

Club members' main work began in March when they discussed float designs with blacksmith Geoff Dodd.

Then, using a formula based on previous parades, an order for flowers is placed through Weston-based growers'

co-operative Lingarden.

They are delivered two days before the parade and sorted according to the float they are destined for.

The day before the parade, club members start arrangements, some working all day and others popping in between commitments.

"Most of the arrangements are put together in situ on the floats," said club chairman Sue Cooper. "But there are a few at the very top of the floats which we make at ground level and put in place when they are finished."

While most of the flowers are bought in, the hundreds of tulips used come from grower Robin Chappell and much of the foliage comes from South Holland District Council's parks department.

MOST visitors only take a roll of snaps of Spalding Flower Parade. But you will find Lincolnshire Free Press and Spalding Guardian chief photographer Tim Wilson snapping away - along with colleagues Tony Jones and Mike Davison - all day.

Together they take hundreds of snaps - of floats, bands, spectators and all the other parade events.

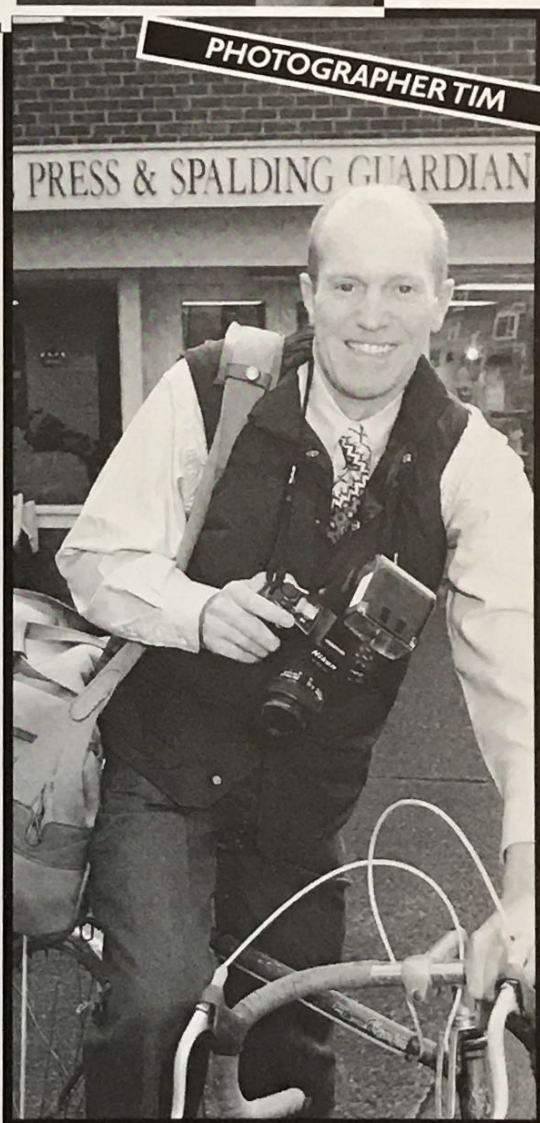
This year Tim celebrates 25 years of covering Spalding Flower Parades.

You might spot him walking the route - or even getting across town on his bicycle (easily the most efficient form of town centre transport on parade day).

Parade day starts for Tim at 9am and finishes at midnight are not unknown as the work has to be processed for a flower parade supplement the next day.

"The most difficult part is getting pictures of the people on the floats and in the bands before they set off."

"They don't have very long to get to their places - and nor do we to get their photographs," Tim said.



PHOTOGRAPHER TIM

▲ **PARADE** photographer Tim Wilson: he often uses a bicycle to get about town on Flower Parade day. (N1275/6A)

● **RIGHT:** A round of applause please for some of Spalding Flower Parade's volunteer drivers, pictured here among the daffodils at this year's Springfields Horticultural Exhibition: back (from left) Ernie Pogson, Clive Gotobed, Mike Goodband and Al Baxter; front Steve Parkin, Peter Orrey and John Fountain. (N322/10)



Catering for the visitors

EVEN after cooking 1,200 rashers of bacon, 600 sausages and hundreds of eggs over the years, Spalding cook Mavis Walker still looks forward to parade time each year.

Mavis, of Kings Road, has been catering for the Romsey Old Cadets during their annual Spalding visits for the past ten years.

She and her helpers prepare an evening meal for the 60-strong band on parade evening and return the next morning to prepare breakfast - and all those bacon rashers - before the band

leaves for its traditional Sunday stint at the festival exhibition site at Springfields Gardens.

Mavis's work - parade organisers do pay her a fee to cover costs - goes unnoticed by most parade visitors, but band members appreciate it.

So impressed are they with Mavis and friends' hospitality that most years they present her with a cuddly toy based on the costumes band-members wear for the year.

She is also proud of the letters of thanks she regularly receives from the band.

"The band stays at Pinchbeck Village Hall and we do most of the cooking here," said Mavis, speaking in the small kitchen of her home only a minute's walk from the parade route.

"Then we take it by car to the village hall to give out.

"They are absolutely famished by the time they have done the parade," she added.

"Every year I

tell myself this will be the last but I always carry on.

"The band members are always very complimentary and very grateful."

MEET the unsung heroes you may catch a glimpse of while admiring the floats.

They are the float drivers, all of them volunteers, who guide the floats along the parade route.

Many of them come from the horticultural industry and several have been driving parade floats for years.

But with some of them more than 40ft long, negotiating them through Spalding's streets - some of them quite narrow - takes some skill.

They are an essential part of the parade, said event organiser Peter Atkinson.

He added: "We are very grateful to the drivers of the floats on parade day.

"It's not just a matter of taking the floats around the route between 2pm and 5pm on parade day.

"They also have to get up very early that morning to get the floats into position and don't finish until the floats are back in place for the arena display."

That means they probably work a 13 or 14-hour day.

"All of that is voluntary labour," added Mr Atkinson. "They also bring the floats down to the sheds where they are decorated on the Wednesday before parade day.

"We are very, very grateful to both our new and old drivers."



THE CATERER

▲ **COOKING for 60** over parade weekend: Spalding resident Mavis Walker cooks breakfast, helped by Romsey Old Cadet mascots presented to her over the years. (N117/23)

Travel Stop



RAC
LODGE

All en suite rooms From £25 single - £35 double

WEEKEND FOR TWO £65

TULIP WEEKEND FOR TWO £70 including breakfast

Bar & Breakfast Restaurant

COWBIT ROAD, SPALDING (on A1073) PE11 2RJ

Telephone: (01775) 767290

Fax: (01775) 767716



Once you're there, you'll want to stay.

X Winner of 'Garden Centre of the Year Award for Excellence' in Garden News readers poll.

LICENSED RESTAURANT
DISPLAY GARDENS
OWL CENTRE
BYGONES MUSEUM
PETS CORNER
AQUATIC AREA
PLAYGROUND
CHALET/SHED DISPLAY

Visit the award-winning and unique 32 acre complex that offers everything for the keen gardener and plenty of diversions for the family - all presented with style and flair

WESTON (A151) NR SPALDING

BAYTREE

a world of gardening

WESTON (A151)

SPALDING, Lincs

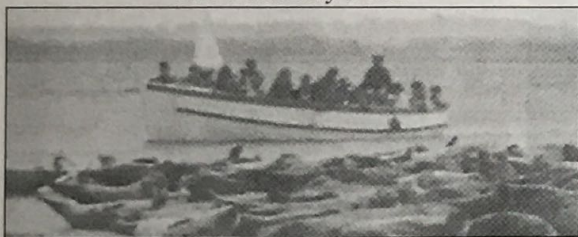
(01406) 370242

BEAN'S BOAT TRIPS

to see the

Seals

and Blakeney Point



Blakeney Point was the first nature reserve in Norfolk and is home to both Common Seals and Grey Seals. It also contains a wealth of bird life including Terns, Oyster Catchers, Plovers and Redshank

from Morston & Blakeney Quays

For booking information and timetables contact:

GRAHAM BEAN BOAT TRIPS

69 Morston Road, Blakeney, Holt, Norfolk NR25 7BD

Tel: (01263) 740505

JOHN BEAN BOAT TRIPS

12 The Street, Morston, Holt, Norfolk NR25 7AA

Telephone: (01263) 740038

It's best to book in advance

*Special Parties catered for
Schools and other parties catered for*

SPALDING PHOTO SERVICES

FOR THE BEST
1 & 4 HOUR
PROCESSING

10 FRANCIS ST,
SPALDING.

Tel: (01775)

725188



PHOTO • VIDEO
Best Prices in Town

WELEC

NEW ROAD, SPALDING

☎ (01775) 724247

THE sign of the best in
金 CHINESE CUISINE 城

THE GOLDEN CITY

30 THE CRESCENT, Spalding PE11 1AF

TEL: 01775 768282

DINE IN THE RESTAURANT OR USE OUR
TAKEAWAY SERVICE AND DINE AT HOME



The Red Lion Hotel

Are you a keen gardener looking for ideas or bargains, visiting the beautiful old churches, on business, or just enjoying the uniquely tranquil landscape?

We are pleased to offer you en-suite accommodation with usual facilities, a selection of Home-cooked food, a choice of Real Ales, a warm welcome and value for money.

Tulip Saturday and Sunday Luncheon,
11am - 4pm (approx)

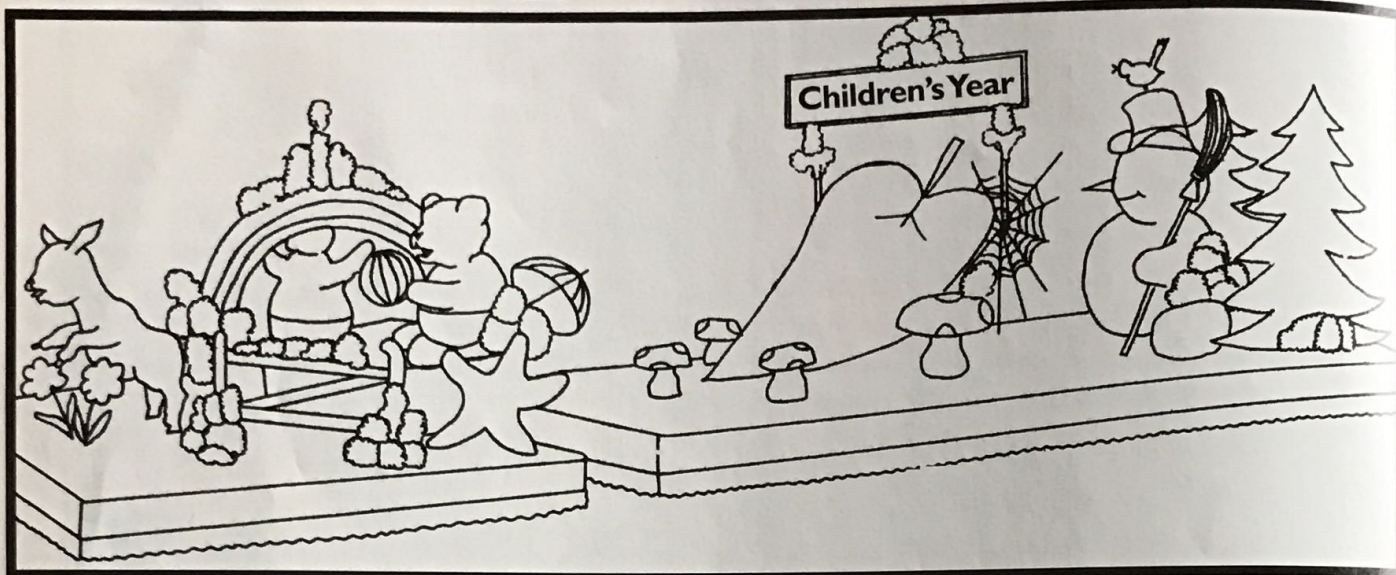
For details of the Tariff and the Special Breaks available to you, please ring or write to:

The Red Lion Hotel

Market Place, Spalding
Lincolnshire PE11 1SU

Telephone (01775) 722869. Fax (01775) 710074

Colour this float



Art for art's sake - and for £400 worth of art prizes!

WE KNOW there are hundreds of talented young artists out there, and many of you are watching the 1997 Flower Parade.

But we want to see just how artistic you really are in this Geest Colouring Competition.

Colour this drawing of the fabulous Geest float in the parade and you could win some super prizes.

And for older children there's a set of simple questions for you to answer.

Geest - Spalding's largest employer - and King's Lynn-based Berol have got together to offer a fabulous package of prizes worth a total of about £400:

★ in the three to five-year-old age group, there are ten

prizes of pencil and washable felt tip pen sets from the

Berol Hand Huggers range;

★ in the six to eight-year-old age group, there are ten prizes of washable broad and fine nib felt tip pens plus Mr Sketch scented felt tip pens;

★ in the eight-plus age group, there are ten prizes of a calligraphy set and a set of fabric paints.

Each prize set is worth about £13, and with so many

Berol



prizes in each age group, there are more chances to win something.

For competition purposes, it

is your age on parade day - Saturday, May 3 - that is important.

For the two younger age groups all you have to do is colour the above picture - it shows the Geest Children's Year float you will see in the parade.

Colour it as brightly as you

group, all you have to do is colour the picture and answer the seasonal questions (below) to stand a chance of winning a prize.

Once your entry is complete, send it to the address below.

Parents and grandparents - don't forget to pass on this magazine to your children and grandchildren to encourage them to enter the competition.

Send your entries to Geest Children's Competitions, Lincolnshire Free Press, Priory House, The Crescent, Spalding, Lincs PE11 1AB, by Friday, May 30.

Questions for children in the eight-year-plus age group

1) Which children's author wrote The Snowman, now a children's classic?

2) What do Americans normally call the season we know as autumn?

3) What kind of onion is also called a scallion?

4) Which film - now a popular stage musical - saw Cliff Richard go on holiday?

can!

For children in the older age



ENTRY FORM

Name.....

Age Address.....

Send your entries to Geest Children's Competitions, Lincolnshire Free Press, Priory House, The Crescent, Spalding, Lincolnshire, PE11 1AB, by Friday, May 30.

For children in age group eight-plus only

ANSWERS to the four questions (right):

- 1).....
- 2).....
- 3).....
- 4).....

character & comfort



THE LAMBOURNE & THE CHARTWELL
3 Bedroom Semi-detached
from £54,000



THE WARWICK - 5 Bedrooms, 4 Receptions
from £148,950



101-250 units



PROPERTY
magazine

**Best UK
Residential
Property 1996**

in an award winning **ALLISON HOME**

When you view the attractive layout
of our properties, you will see why
Allison Homes prides itself on the
standards of its traditional Construction and
Innovative design that give you a comfortable
home. Specification that includes:

**FITTED KITCHENS • FULL CENTRAL HEATING
NHBC BUILDMARK CERTIFICATE
DOUBLE GLAZING**

We have an extensive range of Starter cottages to 5
bedroom executive houses and bungalow's in South
Lincolnshire, North Cambridgeshire and East
Leicestershire Prices start
from £39,500 - £203,950



INVESTOR IN PEOPLE



Finalist



ALLISON HOMES, SWALLOW HOUSE, BANBURY CLOSE, WEST ELLOE AVENUE, SPALDING, LINCOLNSHIRE PE11 2BS
Internet <http://www.home.co.uk/allison/>

If you would like to receive a brochure SIMPLY CALL 01775 710600

Queen and her deputy on parade

EAGLE-eyed parade spectators may have spotted the 1997 South Holland Flower Queen and her deputy before.

Both have appeared in previous parades - so they will be professional flower ambassadors.

● The 1997 Flower Queen Ball is Joanna Higgins (23) of Gedney.

She is now at Nottingham University School of Nursing and Midwifery, studying for a nursing diploma.

A sports enthusiast, she enjoys swimming, horse riding, trampolining (she is a member of the university team), aerobics, volleyball and scuba diving.

She helped raise £1,000

for the Great Ormond Street Hospital Wishing Well Appeal by taking part in a 3,000ft tandem freefall jump.

Her prize package featured gifts from generous Spalding-based companies.

They included the use of a Rover 200 for a year (from Wrights of Spalding), free hair consultations for a year (from Steffen

Hair and Beauty Salon, Spalding), free membership for a year of The Fitness Company, Spalding, and a clothing allowance.

Joanna is a former Miss Spalding Guardian/Lincolnshire Free Press, and appeared in the parade in that role.

★ Deputy Flower Queen Michelle Clayton (25), of Moulton Seas End, enjoyed herself so much as Flower Queen in 1996 she decided to enter the new-look contest.

Her memories of that year are wonderful ones.

She remembers particularly Spalding

● **LEFT:** Joanna and Michelle will be raising cash for charity during their year - with help from the other contestants, Samantha Wright (of Crowland), Julie Bearcock (of Spalding) and Alison Ley (also of Spalding). (N505/33)



▲ **AMBASSADORS** for floral South Holland: Flower Queen Joanna Higgins (right) and her deputy Michelle Clayton. (N505/34)

parade day, her Jersey visit and visits to garden fetes and events across the whole of South Holland.

A shoe shop senior assistant/manageress, she enjoys reading, listening to music, dancing and travelling.

Speaking close to the end of her reign, she said: "I would like to thank all the people I have met and say how nice it was meeting them."

"I am grateful for the opportunities I have had and for being given the privilege of being the 1996 Flower Queen."

Major changes to the competition this year mean Joanna will be acting as an ambassador for the district more than ever.

Not only will she appear at the head of the parade, but Joanna will also visit the Jersey Battle of Flowers and South Holland's German twin town of Speyer.

Both Joanna and Michelle will also make regular appearances at events across the district and beyond.

Joanna and Michelle will also be raising money for charity during their year in office.

They will be joined by the three other Flower Queen contestants - Samantha Wright (of Crowland), Julie Bearcock (of Spalding) and Alison Ley (also of Spalding) - to help raise funds for LIVES (Lincolnshire Integrated Voluntary Emergency Services), Lincolnshire and Nottinghamshire Air Ambulance and the National Society for the Prevention of Cruelty to Children (NSPCC).



Unique
experience for
All the family

MEET OUR GRACIE



THE OWL CENTRE

OPENING TIMES
Summer 9.30am - 5.30pm Winter 9.30am-4.00pm
FLYING TIMES 12 noon and 3.00pm
Situating Baytree, Weston AISI Spalding
Tel: (01406) 371907

CHEER'S NURSERIES



Junior (TM) Petunia Fantasy mixed

Growers of
Quality Spring
and Autumn
Bedding Plants

We specialise in the full range of Spring
and Autumn Bedding Plants.

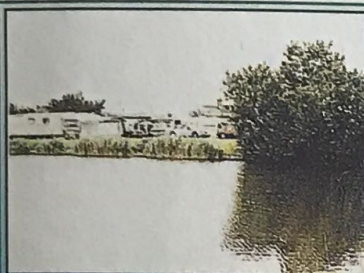
Also the NEW UNIVERSAL PLUS PANSY
which is an improved selection
of the well known Universal Pansies

SOUTHFIELDS FARM, KIRTON,
BOSTON Lincs PE20 1LS

Telephone (01205) 724258 Mobile (0850) 650605

Lake Ross Caravan Park and Fishery

Dozens Bank,
West Pinchbeck,
Spalding
Tel: 01775 761690



Ideally situated to visit the Spalding flower parade
or as a base to fishing great rivers such as
The Welland, Glen, Vernatts and several drains.

All tourers, tents and mobile homes welcome. Amenities
on site including licensed club with entertainment.



DELIASSUS
UK LIMITED.

Hawthorn Bank, Spalding, Lincs PE11 1JZ
Tel: 01775 714700 • Fax: 01775 714720 • Telex 32806



Bygone Farming on video

Fenland Farming '55



BYGONE FARM MACHINERY AND SKILLS
PRESERVED ON FILM

Fenland Farming '55 is a fascinating
glimpse of a time gone by - a whole year
in the life of a Lincolnshire farm in 1955,
at a time when the horse's last few
remaining jobs were finally taken over by
the tractor. This superbly shot nostalgic
colour film includes:

- working horses;
- six vintage tractors with authentic sound;
- a range of working machines;
- gangs of men employing now redundant farm skills;
- work on five different crops including potatoes which were riddled and bagged by hand;
- binding, stooking, stacking (and stack thatching) and threshing of corn;
- the farm's first combine and crop spraying by tractor and helicopter.

Voted 'Best Video of the Year' by Classic Tractor and Machinery Magazine

Order your copy of Fenland Farming (55 mins) now by phone or send £16 + £1 (p&p)
to Primetime Video Productions, Spilsby Road, Eastville, Boston, Lincs PE22 8JR

Name

Address

.....Postcode

I wish to pay by cheque/card. My card No. is

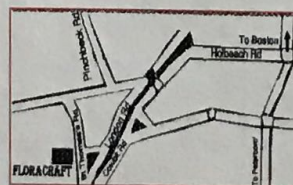
SignatureExpiry Date

CARD HOTLINE (01205) 270397

FLORACRAFT



Visit Floracraft (over 6,000 sq ft!) for the finest
selection of artificial flowers, potted plants, terracotta,
glassware, ceramics, baskets, stencils, spray paints,
soft furnishings
plus much more ideal for the home.



OPEN EVERY DAY
Monday - Saturday 9-5
Sunday 10-4
OPEN BANK HOLIDAYS
(01775) 767800

St Thomas's Road, Spalding

DISCOUNTS VOUCHER - UP TO 6 PEOPLE FOR JUST £8 Peterborough

Ice Arena

Where Ice Skating is fun for all the family

- FREE FIRST ICE SKATING LESSON WITH THIS VOUCHER - RING TO BOOK
- FOUR DIFFERENT ICE SKATING CLUBS TO JOIN
- BIRTHDAY PARTIES - EVERYTHING FOR JUST £6 PER PERSON
- OPEN 7 DAYS A WEEK - PHONE FOR SESSION TIMES
- DISCO NIGHTS WEDNESDAYS FRIDAYS AND SATURDAYS
- BAR CAFÉ GAMES MACHINES AND SATELLITE TV

THIS VOUCHER ADMITS UP TO 4 PEOPLE FOR JUST £2 EACH, WHICH INCLUDES SKATE HIRE, TO ANY SESSION UP TO 31st MAY 1997

IF 4 PEOPLE USE THIS VOUCHER, THEN A 5TH AND 6TH PERSON PERSON WILL BE ADMITTED FREE. FREE CAR PARKING BEHIND THE ICE RINK - FOLLOW THE ROAD SIGNS FROM JUNCTIONS 17 AND 18 ON THE A47

PETERBOROUGH ICE ARENA
1 MALLARD ROAD, BRETTON, PETERBOROUGH
TEL: 01733 260222

REF SFPI

Flag Fen Excavations

Fourth Drove, Peterborough PE1 5UR
Telephone: (01733) 313414

The visitor centre on the lake housing the Bronze Age Museum and Gift Shop. Prehistoric animals, reconstructed Bronze Age Landscape Park and much more. Open every day from 11am - last admission 4pm. Conducted tours between April and October on the hour from 12 noon.



ANCIENT FARMERS DAY - 5 MAY 1997

Includes the Shetland Sheep Show and display of traditional skills. Free entry given to any retired farmer on showing NFU card. Normal entry fee applies, as well as normal Flag Fen attractions.

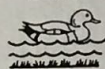
HISTORICAL CRAFTS DAY - 13 July 1997

A chance to watch craftsmen and women at work including lace making, wood carving, spinning and weaving, more crafts are still being added. Normal entry fee applies, as well as normal Flag Fen attractions.

ADMISSION PRICES

Adult £3.50 • OAP £3.00 • Child/Student £2.50 • Family ticket £9.50
English Heritage Discount available on producing current membership card

PEAKIRK



WATERFOWL
GARDENS



PEAKIRK, PETERBOROUGH PE6 7NP • Tel: 01733 252271

800 birds from all over the world, most of the 139 species are hand tame. Nature walk, tree trail, toddlers maze, tea rooms (open April to October), gift and book shop, children's play area, picnic areas, hides, binocular hire. Disabled access throughout 20 acres of gardens.

Open daily 9.30am - 5.30pm (1 hour before dusk in winter)

ADMISSION: ADULT £3.50 SENIOR CITIZEN £2.50

CHILD (4-16) £1.75

FAMILY TICKET £8.00 (2 Adults & 2 Children)

MEMBERSHIP AVAILABLE Individual £15 Joint £20 Family £25

PETERBOROUGH Cathedral City



PETERBOROUGH CATHEDRAL

Steeped in history, Peterborough has developed into a modern city that tastefully combines the old with the new to offer an attractive and enchanting place to visit.

- We can offer you
- ★ A magnificent Norman Cathedral
 - ★ City Museum & Art Gallery
 - ★ Riverside Theatre
 - ★ Nene Valley Railway
 - ★ Superb leisure facilities - ice skating, watersports, golf.
 - ★ Greyhound Stadium
 - ★ River Trips

- ★ Excellent shopping facilities including the Queensgate Centre
- ★ A wide range of attractions from the Bronze Age to the Modern Day
- ★ Historical houses, with Burghley House close by
- ★ Indoor children's laycentres ... the list is endless
- ★ Coach parking is in Acland Street near to Queensgate with a dropping off point behind the Cathedral

For further information please telephone the
Tourist Information Centre on 01733 452336 or 452404 or
write to 45 Bridge Street, Peterborough, Cambs PE1 1HA

KEY THEATRE

Entertaining Peterborough

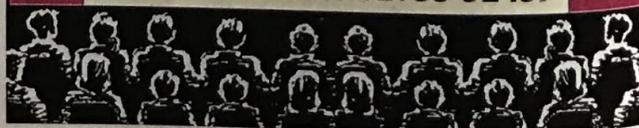


Plays • Concerts • Ballet & Opera
Comedy • Musicals
Traditional Seasonal Pantomime

Riverside Bar and Coffee Shop

Join our mailing list to receive the Key Times, our theatre newspaper, every month. It will give you full details of our current exciting season.

BOX OFFICE: 01733 52439



Fun, fun, fun for all at festival site

AN EXTENSIVE programme of fun-filled events aimed to keep everyone entertained is on the cards for Flower Parade weekend at Springfields Gardens.

Marching bands, entertainers, exhibitions, stalls, games and crafts all feature in a three-day package of entertainment.

And if the comprehensive list of special activities isn't enough, the gardens themselves will be open, giving you the chance to wander its 25 acres to marvel at the glorious springtime colour provided by tulips, daffodils and other bulbs.

Springfields Gardens is also the place to be

if you want to see the parade floats close up (except when they are on parade on Saturday, May 3, 2-5pm).

This is the best time to take those photographs while there is plenty of time to line up your shots!

● Admission to the festival site, float exhibition, country fair and Springfields Gardens is at an all inclusive price of £5 per adult with accompanied children free.

A discount of 15 per cent is given for groups of 20 or more when booked in advance.

What's on? What's on?

FULL programme of events is -

Saturday, May 3

11am-11.30am - Spalding Marching Ambassadors Band (who will be entertaining around the arena roadways)

10am-2pm - static display of Flower Parade floats in the main arena

2pm-5pm - Flower Parade will leave the arena at 2pm for its tour of Spalding, returning to the arena at about 5pm.

3pm-3.30pm - Halsbands Flying Falconry Display, featuring falcons, hawks and owls; there will also be an ongoing static display of birds of prey.

3.45pm-4.20pm - John Whiteley's Farmyard Rodeo, with sheepdogs, sheep, ducks and geese; there will also be an ongoing static display.

3.30-4pm - Spalding Marching Ambassadors Band will entertain in the gardens.

Alongside all that, there will also be:

- gift and craft fair (in the exhibition hall)
- sponsors' exhibits and other trade stands
- Pierre the French accordionist
- children's entertainment featuring various activities
- appearance by TV favourite Don Estelle - Lofty in It Ain't Half Hot Mum!
- Royal Navy static display
- Royal National Lifeboat Institution model boat show
- Boots the stiltwalking clown
- pony rides
- 25-acre spring show gardens
- licensed restaurant and bar.

TO PAGE 22



▲ **BOOTS the stiltwalking clown** - meet him at Springfields country fair.

Times, prices, parking....

■ **OPENING TIMES:** Friday, March 21 to Sunday, May 11; daily 10am-6pm, last entry 5pm.

■ **Charges** (except special events): adults £3, senior citizens £2.70, accompanied children free.

■ **Parade weekend** (Saturday to Monday, May 3 to 5): £5 all classes, children free.

■ **Group rates:** 20 or more 15 per cent discount if booked in advance.

■ **Catering:** patio cafe with 120 seats;

opening times as gardens.

Party bookings required in advance, menu available.

Telephone the catering manageress on 01775 713253 or 01775 724843.

■ **Parking:** free for gardens all season (except parade weekend - Saturday cars £3, coaches £10; Sunday cars £2, coaches £5).

■ **No dogs allowed** (except guide dogs).

■ **Please check with gardens office** on 01775 724843 for latest information.

GARDENS FIND TV FAME

SPRINGFIELDS Gardens appears on TV gardening programmes almost annually - one of the latest TV crews to visit was for Anglia's Gardens

Without Borders programme.

Presenter Alan Mason (left) is pictured among the tulips with gardens general manager Peter Atkinson.



What's on...

Sunday, May 4

11.15am-11.45am - Halsbands Flying Falconry Display, featuring falcons, hawks and owls; there will also be an ongoing static display

noon-12.45pm - Famous Romsey Old Cadets will perform their zany musical marching show

1.15pm-1.45pm - Halsbands Flying Falconry Display - as earlier

2.15pm-4.30pm - Springfields Annual Marching Band Competition, featuring five bands

And there will be:

- static display of Flower Parade floats

- gift and craft fair (in the exhibition hall)

- sponsors' exhibits and other trade stands

- Pierre the French accordionist

- children's entertainment featuring various activities

- appearance by TV favourite Don Estelle - Lofty in It Ain't Half Hot Mum!

- Royal Navy static display

- Royal National Lifeboat Institution model boat show

- Boots the stiltwalking clown

- pony rides

- 25-acre spring show gardens

- licensed restaurant and bar.

Monday, May 5

11.30am-noon - Rangers of Derby Marching Band

12.15pm-12.45pm -

Halsbands Flying Falconry Display, featuring falcons, hawks and owls; there will also be an ongoing static display of live birds of prey

1pm-1.30pm - Tom and Tilly Turnip, comedy car act

2pm-2.30pm - Rangers of Derby Marching Band

2.45pm-3.15pm - Halsbands Flying Falconry Display - as earlier

3.30pm-4pm - Tom and Tilly Turnip - as earlier

4pm-4.30pm - Rangers of Derby Marching Band

Other Monday attractions include:

- static display of Flower Parade floats

- appearance of a television personality - to be announced

- gift and craft fair (in the exhibition hall)

- sponsors' exhibits and other trade stands

- Tom and Tilly Turnip - Mix and Mingle

- children's entertainment featuring various activities

- appearance by TV favourite Don Estelle - Lofty in It Ain't Half Hot Mum!

- Royal Navy static display

- Royal National Lifeboat Institution model boat show

- Boots the stiltwalking clown

- pony rides

- display by traditional Turkish dance troupe

- 25-acre spring show gardens

- licensed restaurant and bar.

(Events subject to change and weather permitting).

Hungry? Places to eat!

FEELING peckish during your visit?

There are plenty of places to eat in Spalding - and still more across South Holland.

Restaurants in Spalding:

Cley Hall Hotel, High Street; Crystal Inn, Churchgate; Fratelli Ristorante, Double Street; Golden City, The Crescent; Red Lion Hotel, Market Place; Shaheen Tandoori, Pinchbeck Road; Springfields Restaurant, Camelgate; Queensgate Hotel, Westlode Street; Woodlands Hotel, Pinchbeck Road.

Pubs on the route or in the town centre serving food:

Bass House, New Road; Bull Inn, Churchgate; Black Swan, New Road; The Birds, Halmer Gate; Chequers, Swan Street;

Lincolnshire Poacher, Double Street; Pied Calf, Sheep Market; Station Gates, Winsover Road; Ye Olde White Horse Inn, Churchgate.

Cafes, takeaways, fish and chips:

American Burger, New Road; Ayscoughfee Gardens cafe, Churchgate; Bingol Kebab and Pizza, New Road; Chesters,

New Road; Chilli Master, Winsover Road; Crispy Cod, Winsover Road; Delight Chinese Takeaway, Westlode Street; Eastern Balti, Westlode Street; Golden Tree Chinese Takeaway, Winsover Road; Kamble House, Station Street; Leo's Pizza and Pasta Place, Winsover Road; Ospreys, The Crescent; Priors Oven, Sheepmarket; Safeway, Holland Market; Seabreeze, Sheepmarket; Tulips Coffee House, Red Lion Street; Turners Fish Restaurant, Red Lion Street; Wimpy, Market Place; Welland Restaurant (Hills), Market Place; Westlode Fisheries, Westlode Street; Winsover Centre (Spalding Co-op), Winsover Road.

This list was supplied by South Holland District Council. Publishers of this guide can take no responsibility for any omissions.



▲ TV favourite Don Estelle - Lofty in It Ain't Half Hot Mum will be appearing at Springfields.

TURNERS FISH RESTAURANT

New Road, Spalding. Tel: 01775 722502

1st Choice for **FISH & CHIPS**

Seating for 140
Bus parties catered for
Fast Take-away Service
Open Tues, Wed,
Thurs, Fri, Sat
11am-11pm
Also Flower Parade Sunday
11.30am-6pm



DON'T LEAVE HIRING A CAR TO CHANCE

Latest Ford models at **LOW PRICES**

• MONDEO • ESCORTS • FIESTAS • TRANSIT VAN
• AUTO SCORPIO • GALAXY • FREE CHILD SEATS
• RAC COVER • PETROL & DIESEL CARS • ALSO ESTATES

St John's Road, Spalding
Telephone: 01775 767651

Edmondson

Better Rent Ford



Rent a car

ENDEAVOUR

BOUND for BOSTON



The full size sailing replica of the ship in which Captain James Cook in 1768 undertook a voyage of exploration and scientific discovery to the Pacific is visiting Boston in May 1997.

Endeavour chartered New Zealand and eastern Australia whilst Sir Joseph Banks, the renowned Lincolnshire botanist, made important discoveries in the field of natural sciences.

2 May - 5 May 1997
at the Port of Boston

Open to the Public from 10am - 7pm each day

* Exhibitions * 'Endeavour' Tours * Fireworks Display
* Boston May Fair * 'M.V. Ocean Defender' Exhibition

for details & programme contact:

Booking Unit, National Maritime Museum on 0181 312 6608
or Peter Alder, Boston Borough Council on 01205 357400
or the Boston Tourist Information Centre on 01205 356656

The organisers reserve the right to alter or add to the programme without prior notice

Lincolnshire...the great escape

The peace and quiet of rural south Lincolnshire is a very good reason for moving home - a Broadgate Home is an even better reason. Built to the highest standards our homes offer tremendous value and include many features often described by other builders as 'extras'. A Broadgate home in south Lincolnshire also means you would be less than 1 hour by road from the east coast - do you feel like escaping?

2, 3, 4 & 5 bedroomed houses, 2 & 3 bedroomed bungalows. Prices from £38,500 - £129,950.
Current developments at Spalding, Kirton, Holbeach, Woodhall Spa.



01775 711637

Broadgate Homes Ltd, FREEPOST PE253, The Sales Centre, Wygate Park,
Spalding, Lincolnshire PE11 3PA Open Daily 10.30am-5.00pm

the CYPRESSGATE from £122,500

Executive 5 bedroomed detached house with
en-suite and double garage.



▲ FUN for the young visitors will come from Tom and Tilly Turnip, performing on Monday, May 5.

● LEFT: A taste of the rural life will be presented to country fair visitors by John Whiteley with his sheepdogs on Saturday, May 3.

● BELOW: This group of Turkish dancers from London will be performing in Springfields Gardens, Spalding, on Monday, May 5.



★ Birds of prey

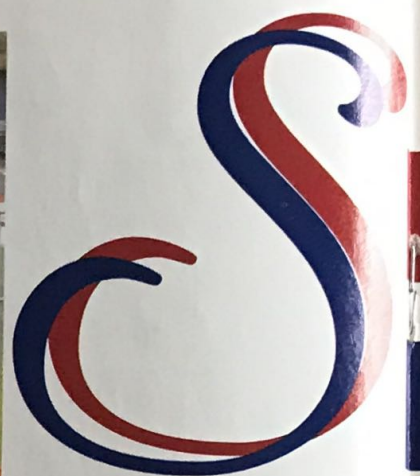
★ Turkish dancers

★ French accordionist

★ John Whiteley and sheepdogs

★ Don Estelle

★ Tom and Tilly Turnip



WHILE most gardeners are winding down during the autumn months, gardeners at Springfields face a busy time planting thousands and thousands of bulbs.

Autumn 1996 was no exception as they worked to prepare this year's spring display ready for visitors.

Springfields' gardening staff, working with the British bulb industry which supplies all the bulbs, spent the autumn planting between 150,000 and 200,000 bulbs - in over 300 varieties of tulips, 70 varieties of daffodils and a host of miscellaneous bulbs.

In addition, thousands of pansies and polyanthus help to produce that true blue colour which is elusive in the tulip range.

All flowers are labelled and this allows visitors to select varieties they wish to grow in their own gardens in the autumn.

An unheated glasshouse provides diversion with a range of semi-hardy trees and shrubs underplanted with spring bulbs and flowers.

Plants there are ideal for unheated conservatories.

Away from the flowers, a popular pastime is fish spotting.

There is a large ornamental lake containing large fish including mirror carp, some of which are more than 30 years old and weigh more than 10lb.

At this time of year, although they are fed regularly, they appreciate any sandwiches donated by visitors!

FANS of TV gardening programmes will no doubt have

Spectacular Springfields

Full Springfields festival site listings - pages 21, 22

seen Springfields Gardens on their screens several times.

One of the most recent television appearances featured in a new series for Anglia TV - Gardens Without Borders.

Presenter Alan Mason traced the history of the tulip from its arrival in Britain 400 years ago and filmed some of the harvesting and storage techniques of the daffodil industry.

He also discovered more daffodils are grown in Lincolnshire than in the whole of Holland.

And he found out more about revolutionary research that is investigating how galanthamine - a constituent of daffodil bulbs - could help ease the symptoms of Alzheimer's disease.

TURKISH dancers will entertain the crowds at Springfields Gardens during the afternoon of Monday, May 5.

The Hornsey Turkish School Dance Group - from the London-based Turkish Youth Education, Cultural and Arts Society - will be performing, wearing colourful costumes which reflect the dress traditionally worn back in Turkish towns and villages.

● **PICTURED BELOW RIGHT:** Birds of prey will be among the arena exhibits at Springfields Gardens Country Fair - Halsbands Falconry Display will be appearing on all three days of the fair.



▲ **BONJOUR, mes amis** - that will be the meesage from Pierre the French accordionist, appearing at the country fair on Saturday, May 3 and Sunday, May 4.

Look out for TV star

VISIT the Springfields Gardens and Country Fair during the afternoon of Monday, May 5 and you will come across a TV personality.

A visit by one is planned - their identity always kept a secret - and they will be around the arena to meet visitors and say hello.

On-the-day announcements will give exact times for the visit.

Last year, Gladiator Saracen spent three hours meeting the crowds.

In 1995 former Neighbours actor Dan Falzon, who played Rick Alessi in the Australian soap, was guest visitor.

Alessi in the Australian soap, was guest visitor.



Here to entertain you!

FLOWERS, Minis, Army displays and exhibitions will be the order of the day at a town centre event on parade day.

Venue will be the Sir Halley Stewart Field, Spalding and a host of activities is promised to keep you entertained.

The parade also passes by close to the field in Pinchbeck Road.

Admission is free and gates will be open from 10am to 5pm.

■ **Mr Blobby** will be at the event all day, taking part in activities, meeting visitors and having fun.

Look out for him meeting the crowds and while you're there, take in all the other specially-arranged events.

■ Your chance to see scores of people taking part in cross-stitch activities will also come at this event.

They will be participating in the **Biggest Cross-Stitch Party in the World** - and many have already completed their cross-stitch charity packs



ready for today's event.

It is supported by Simply Cross-Stitch and will be raising money for the National Society for the Prevention of Cruelty to Children.

■ **The 2nd Battalion Royal Anglian Regiment** will take to the central arena and their display will include combat situations, an assault course, weapons and equipment drill and much more.

This is a prime opportunity to see the Lincolnshire Poachers who have just returned to England after serving overseas for nine years.

The Poachers will also be at the field on Sunday, May 4 (field is open 11am-2pm).

■ If cars are your thing, then you shouldn't miss the **Rover Mini Motorshow**.

It is being brought to Spalding in conjunction with Wrights of Pinchbeck Road, Spalding, and marks the Miles of Minis world record attempt also going on on the same day. Mini merchandise will be on sale throughout the day.

■ For the flower lovers



▲ **CROSS-STITCH** fans will be converging on the Sir Halley Stewart Field, Spalding, where they will have the chance to meet the team from Simply Cross-Stitch.

among you, **Geest Flowers** - part of Spalding-based Geest plc - will be at the field all day.

Their stand will be selling fresh cut flowers and there will be demonstrations of flower arranging techniques in association with De Montfort University College of Agriculture's Holbeach campus.

■ **Wella UK** - one of the sponsors of this year's South Holland Flower Queen competition - will also be exhibiting, their trip to Spalding made in conjunction with Steffen Hair and Beauty Salon of Sheep Market, Spalding.

■ **The Community Practitioners' and Health Visitors' Association** will be presenting their Centenary Exhibition depicting Florence Nightingale and her vision of health visitors and health promotion of 100 years ago.

The 1997 Flower Queen Joanna Higgins is training to be a nurse at Nottingham.

The exhibition also reflects the charity work the Flower Queen, her deputy and their team of helpers will be undertaking to raise money for Lincolnshire Integrated Voluntary Emergency Services (LIVES) and Lincolnshire and Nottinghamshire Air Ambulance.

■ **Environment fans** will find the **Lincolnshire County Council Green Bus** of interest.

It regularly visits primary schools and county shows allowing children and adults to find out more about environmental work.

■ Displays from recycling and refuse company **Cleanaway and Levertons Material Handling** complete the list of attractions.

■ **Catering** will be provided by the **Woodlands Hotel**, Spalding, and refreshments available will include a hog roast, fish and chips, hot dogs, hamburgers and tea and coffee.



Sir Halley Stewart Field, Spalding

2 World record attempts

27

SPALDING
FLOWER PARADE 97

Minis by the mile



PARADE visitors have a bonus attraction to look forward to this year - a Miles of Minis event that will see hundreds of the popular cars in Spalding.

Organisers hope to break a world record for the longest stretch of Minis and hope to attract up to 1,700 cars from across the country and from abroad.

The Minis will use most of the parade route and will take to the streets from 1pm from their base at the Castle Sports Complex in Albion Street, returning at about 2pm.

More than 300 marshals will line the route, ensuring spectators' safety - but please note roads will be closed from 12.30pm, so please ensure you are where you want to be by then.

Dr Douglas Gyte, South Holland District Council leisure and marketing manager, said: "This is a fantastic addition to the main event of the parade and will be an amazing spectacle in its own right."

"There will be Minis from all over Britain and Europe with an audience to match."

Entrants have each paid a £15 registration fee - with all profits from that donated to the National Society for the Prevention of Cruelty to Children (NSPCC).

Entrants will all receive commemorative memorabilia and in case of emergencies there will be breakdown support.

Dr Gyte added: "South Holland District Council is happy - with its other sponsors - to provide the logistical support needed for an event of this stature."

Dr Gyte was so impressed



with the Mini project that he sold his Vauxhall Senator and bought - a Mini!

Co-organiser Lesleyanne Moore is a regular participant in the Italian Job charity events, which see more than 100 Mini drivers taking their cars from Italy to Britain in a tribute to the famous Michael Caine film.

Support will also come from Rover dealership Wrights of Spalding, whose dealer principal Chris Graham said: "We are 100 per cent behind this exciting event."

"It is a fantastic opportunity for Spalding and will raise money for charity at the same time."

The event is also supported by Wella, Geest, Mini Magazine, Rover, Advanced Telecom Services and Simply Cross Stitch.

● **IN THE PICTURE:** Meet the team and some of the supporters of the Spalding Miles of Minis project, including co-organisers Lesleyanne Moore (centre front) and Dr Douglas Gyte (back fifth from right).



Suppliers of
Houseplants
- Garden plants
and Bedding Plants
to Garden Centres
and Supermarkets
Nationwide.



**KEITH BUTTERS LTD
SPALDING - U.K.**

Inflatable dragon is fiery - but friendly

NEW attractions will feature in the parade for the first time this year as organisers attempt to add even more fun to the event.

- Not only will more community groups be involved in submitting floats - there will be one from Moulton Chapel village and one from Spalding Churches for example - but there will be other items too.

- Near the start of the parade you will see a giant Fiery Dragon - he is friendly, we assure you!

- And near the end of the parade will be the calvacade of cars, featuring flower-bedecked vehicles from Spalding dealerships in conjunction with South Holland florists.

- And don't forget to look out for the new Flower Prince and Princess in a flower-decorated open-topped car.



● **DON'T** be shocked if you see this giant inflatable dragon roaming the streets of Spalding on parade day - it's part of this year's parade.

Message for you...

A MESSAGE from the Rotary Club of South Holland, taking part in the parade:

“The club has for the past three years participated in an official capacity, supporting the parade and at the same time raising money for charitable causes.

Each year members, families and wives have dressed up in clowns' costumes, walking the route with the floats, displays and bands and entertaining the crowds in a variety of ways.

The club is delighted to be part of a wonderful spectacle which promotes the district and one of the district's major contributors and employers in the form of the bulb industry.

Some members have an interest or association with the industry itself but the majority benefit by being members of a thriving and prosperous business community.

The Rotary Club's primary purpose is fellowship but this is fostered through giving members' time and effort in doing community activities and supporting worthy and charitable causes.

Substantial funds are raised every year for both local and national charities.



▲ **PLEASE** be generous in your support for the parade and other charities - members and friends of South Holland Rotary Club (some of them pictured here before last year's parade) will be asking for your support.

This year the South Holland Rotary Club's primary purpose for its Tulip Time activities will be to direct funds towards the Save the Children charity.

Its charitable works in support of deprived children in the UK and across the world are very well-known, much of which is due in no small measure to the hands-on support given by its president The Princess Royal and the tireless efforts of its executives and members.

You will not fail to recognise the Rotarians as they accompany the parade.

They are supported by a brewer's dray, kindly entered by Wards Brewery, and a

delightful and colourful steam engine proudly displaying the name and livery of its original owners.

Rotarians will be divided into entertainers and clowns.

The entertainers, who will be recognised by their cartoon character costumes, will give particular pleasure to those younger members of the crowd but are there for the enjoyment of all.

The clowns will collect and their job is to ensure that you give willingly and generously.

We wish you a memorable and joyful day."

...from Rotary collectors

Luxury with Character



A prestigious development of houses and bungalows at East Fields & East End BOURNE LANGTOFT

It's a difference you can feel in the warmth of the traditional materials and solid workmanship found in all our homes coupled with up to the minute standard specifications including full equipped integrated kitchens, en-suite facilities, utility room and carpets.

Sales office open 7 days a week.

Parker
TRADITIONAL HOMES

For more information

M.Parker + Sons Ltd

St Johns Road, Spalding, Lincs

Tel: (01775) 724777



Tinsley Foods is a progressive food company based at Holbeach St Marks. Employing 1500 people, we supply the highest quality prepared, chilled foods to the most prestigious own-label customers in the High Street

Tinsley Foods Limited
Holbeach St Marks,
Spalding, Lincolnshire
PE12 8HF

Telephone: Holbeach
(01406) 702000

Fax: Holbeach
(01406) 701214

Tinsley Foods

*"Working towards
Investors in people"*

SOUTH HOLLAND 97

CHURCH FLOWER FESTIVALS

30

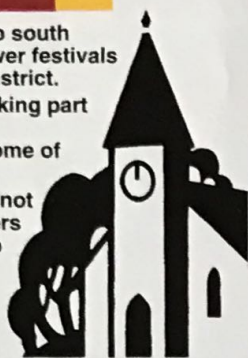
ONE of the highlights for many visitors to south Lincolnshire every spring is seeing flower festivals in churches and other venues across the district.

Hundreds of volunteers, many of them taking part now for decades, arrange flowers, serve refreshments and man stalls at festivals, some of them lasting up to a fortnight.

For the churches, the festivals represent not only an opportunity to be thankful for flowers but also gives church groups the chance to raise much-needed funds.

Wherever you are in south Lincolnshire, there will be a flower festival not far away.

* DISABLED FACILITIES AVAILABLE.



Spalding flower festivals...

BROAD STREET METHODIST CHURCH*:

Flower Festival May 1 to 6. On parade day breakfast is served from 7.30am, followed by the church's famous cafeteria (no bookings on parade day). Enquiries to Mrs E Chappell, Fengate Road, West Pinchbeck. Tel: 01775 640381.

PARISH CHURCH OF ST JOHN THE BAPTIST*, Hawthorn Bank: Decorated church May 1 to 5. Stalls, refreshments, parade day parking; car boot on May 5. Rev K Almond, 01775 722816.

...Spalding flower festivals

PARISH CHURCH OF ST MARY AND ST NICOLAS*, Church Street: Flower Thanksgiving Festival, April 30 to May 6.

This centrally-situated church is open until 8pm.

Booked meals and light refreshments are available in the nearby church hall.

A special thanksgiving service will be held on May 4, 6.30pm - all welcome.

Contact The Parsonage, Church Street, Spalding, PE11 2PB. Tel: 01775 722772.

...Spalding flower festivals

PARISH CHURCH OF ST PAUL'S*, HOLBEACH ROAD (near Springfields Gardens): Flower Festival May 1 to 6. Refreshments throughout and coach parties welcome. Contact the Rev D Maylor on 01775 722532 or L Tyrrell on 01775 722817.

PENNYGATE EVANGELICAL CHURCH, Carrington Road: Flower Festival May 2 to 6, 10am-5pm. Refreshments and toilets available.

Theme: Children of the Bible. Contact Pastor D Marshall on 01775 761026.

ST NORBERT'S CATHOLIC CHURCH*, St Thomas's Road: decorated church and Lourdes Grotto.

Cafeteria facilities and coach/car park, May 3.

Holy Mass vigil, May 3 4.45pm, May 4 8am and 10.30am. Tel: 01775 722056.

SPALDING UNITED REFORMED CHURCH*, Pinchbeck Road: decorated church, April 25 to May 6.

Cafeteria daily 10am to 6pm; catering for booked parties during the festival and throughout the year.

Contact Mrs A Waltham, 96 West Elloe Avenue, Spalding. Tel: 01775 766128 or 725537.

Churches north of Spalding...

DONINGTON ST MARY AND THE HOLY ROOD CHURCH, Flower Festival, April 25 to May 5 plus refreshments.

Festival includes a concert by Boston Salvation Army Band and Choir and including performances by pupils from Donington schools on Friday, April 25.

Contact Mrs J Stanley on 01775 821515.

GOSBERTON METHODIST CHURCH*, Salem Street: Flower Festival, May 2 to 5, with refreshments and stalls. Telephone 01775 840792.

GOSBERTON ST PETER AND ST PAUL'S CHURCH: April 26 to May 5, Flower Festival plus meals and refreshments served in the new church hall.

Contact Janet Lunn on 01775 840347 or Ella Chapman on 01775 840386.

PINCHBECK ST MARY'S*, CHURCH STREET: April 27 to May 6, Flower Festival, with craft and produce stalls, children's quiz and the Deadwood Saloon for hot and cold meals.

Contact Tricia Lunn, 35 Independence Drive, Pinchbeck, Spalding, PE11 3TR.

Telephone: 01775 725889.

MARELDA AQUATICS



COLD WATER FISH SPECIALIST

Koi Carp, Goldfish, Shubunkin etc.

- FISH FOOD
- GARDEN LIGHTS
- PVC LINER etc
- WATER PUMPS
- PONDS

83 Delgate Bank,
Weston, Spalding, Lincs PE12 6JB
Telephone 01406 370670



Meet the...

● BELOW: Bring on the band: this one is Melton Mowbray Tally Ho Band - regular parade visitors. Its appearance is sponsored by Geo Adams & Sons Ltd, whose headquarters are in Spalding. (MC4/25)



● LEFT: REGULAR performers in Spalding Flower Parade are members of the 13th Coventry Scout Band. This year's appearance - their 32nd in flower parades - is sponsored by Spalding Churches, a group which is also entering a Noah's Ark float this year. These band members are pictured during last year's parade. (MC13/31)

...north of Spalding

SURFLEET ST LAURENCE'S CHURCH*: Flower Festival at this church with its famous leaning tower, April 26 to May 5.

Refreshments and light meals available; coaches and party bookings welcome.

Contact Mrs Mollie Mayfield on 01775 680260.

SUTTERTON ST MARY'S:

Sutterton's Village Life Depicted in Flowers, May 2 to 8.

Refreshments, plants and crafts available. Coaches welcome; lunches by appointment.

May 4: Festival Evensong with the Bishop of Grantham, 6pm. Contact Janice Despicht on 01205 460590.

Churches and other venues east of Spalding

ANGLIA MOTEL*, A17, Fleet: Flower Festival with proceeds to War Veterans Pilgrimage Fund.

Coach parties catered for. Tel: 01406 422766.

FLEET BAPTIST CHURCH: Flower Festival, May 2 to 5. Light refreshments available.

Contact Mr R Dean on 01406 424556.

Churches and other venues east of Spalding

FLEET PARISH CHURCH: Flower Festival, April 26 to May 5.

Exhibitions, refreshments, stalls, toilets and parking available.

Coaches welcome.

HOLBEACH PARISH CHURCH*: Flower Festival,

April 26 to May 5.

Weekend craft demonstrations; light refreshments throughout; craft and other stalls on April 26 and May 3; local school displays; choral evensong May 2, 5pm.

LONG SUTTON ST MARY'S PARISH CHURCH*: Flower Festival, April 24 to May 5. Refreshments including lunches and teas; produce and craft stalls. Coach parties welcome. Enquiries and bookings to Ross Smith on 01406 362750.

MOULTON PARISH CHURCH*: Flower Fiesta, April 26 to May 5. Booked coach parties for lunches, high tea and afternoon tea.

Tea in church for casual visitors and coach parties; plants, china and craft stalls.

Contact Mrs I Chamberlain, 28 Ashby Gardens, Moulton, Spalding, PE12 6QR. Tel: 01406 370791.

31

Churches south of Spalding

MOULTON CHAPEL DECORATED CHURCH AND CHAPEL*: from April 26.

Festival includes parade on May 4 led by Northampton Pipe Band, with majorettes, fancy dress, floats and classic cars. Coaches welcome.

Light refreshments available.

Contact Mrs Canham on 01406 380458.

Churches west of Spalding

ST BARTHOLOMEW'S CHURCH, WEST PINCHBECK*: A Festival of Flowers,

April 30 to May 5.

Toilets and caravan site.

Produce, refreshments, bedding plants and bric-a-brac on sale.

For bookings tel: 01775 640271.



Churches, other organisations offering catering

SEE also previous listings, which includes many churches with flower festivals where catering is arranged.

SPALDING FRIENDS' MEETING HOUSE, Double Street/ Westlode Street: salad meals and home baking. Open all day on May 3; toilets available. Tel: 01775 725153 or 01775 722638.

SPALDING ST JOHN AMBULANCE HEADQUARTERS*, rear of 7 Pinchbeck Road: catering May 3-4; no bookings, toilets for customers.

ST THOMAS'S ROAD METHODIST CHURCH, Spalding: catering May 3, including refreshments; toilets for customers.

COWBIT VILLAGE HALL*: stalls and refreshments May 3-4. Tel: 01406 380496.

CROWLAND ABBEY INSTITUTE: meals and food available on May 4-5. Crowland Abbey Flower Festival, August 22-25.

music makers



● LEFT:
Derby Serenaders International Band - pictured here during last year's parade. Dressed in costumes reminiscent of traditional Spanish dress, they will also feature in this year's event. (MC14/28)



Just One Of Our New Properties Individually Designed For You In Mind



Exclusive Homes • Large Plots In South Lincolnshire

All properties are built to the highest specifications and most include:

uPVC Windows • Gas Central Heating

All Mains Services • Fitted Kitchen

All With En-Suite And Utility

For more information contact:
FENBANK BUILDERS
Mr Neve on 01406 424071 or 0860 847359 Anytime

● **RIGHT:**
Flashback to last year's colourful carnival spectacle which came to Spalding town centre courtesy of Centre Stage.

Look out for their carnival activities over parade weekend this year.



**Carnival parade,
Sunday, May 4**

Quality Plants at Competitive Prices

- Hanging Basket Plants
- Hanging Baskets
- Refils for Hanging Baskets
- Bedding Plants
- Perennials
- Herbs
- Patio Tubs

Trade Enquires Welcome



Unicorn Nurseries Plant Centre

**Unicorn Plant
Centre**

15 Austendyke Rd,
Low Fulney
Spalding, Lincs
Tel: 01775 725415



Caribbean carnival

SPALDING town centre will explode with all the riot and colour of a Caribbean carnival parade on Sunday, May 4.

Hundreds of masked revellers - many of them young people - are expected to take to the streets to bring to residents and visitors alike a delicious taste of carnival.

It will be one of the most colourful of this year's South Holland Spring Festival events.

Scores of young people have been hard at work over many weeks:

- designing and creating their own costumes;
- rehearsing and playing in the junk band;
- composing a festival song;
- playing in a steel band;
- creating carnival dances.

At the centre of all these activities has been Central Mas' Camp run over the Easter school holidays.

The carnival parade, part-funded by South Holland District

Council and supported by local businesses, will be part of the activities through Spalding town centre on Sunday, May 4.

It will build on the success of a similar event held over Spalding Flower Parade weekend last year.

Part of the carnival will also be making an appearance on parade day.

Parade weekend activities are just part of an ambitious programme of events organised by Centre Stage and ACT Theatre Group.

Their recent production of Joseph and the Amazing Technicolor Dreamcoat met with a fantastic response from theatregoers.

From their town-centre base members are undertaking a wide range of youth culture activities, including drama, music, art, dance and media - all of it helped by a £233,000 National Lottery grant from the Arts Council for England.

Look out for their colourful costumes as Centre Stage members take to the streets.

Something for everyone

YOU'VE another warm welcome awaiting you at events that make up this year's South Holland Spring Festival.

Whatever your interest, there's something for you. From a carnival parade to coach tours to a cycle race, mosaics to model cars - it's all here.

And all that is going on alongside the church flower festivals, parade day events and town centre activities.

If you're in the area on a particular day, don't forget to check the tick-boxes at the end of the listings (on page 39) to find out what's on when.

Refer to the listings below to find out more. Festival entries are listed alphabetically by venue or theme.

Baytree Nurseries Garden Centre, Weston

OPEN every day of the festival as part of normal centre opening. Every day of the festival, you are invited to visit:

Saturday, April 26 - Sunday, May 11

- ★ bygones museum (with horticultural and domestic equipment);
- ★ owl centre - one of the fastest-growing centres in the UK, flying displays and talks will be given twice a day at noon and 3pm; entrance charges: adults £2.30, OAPs and children £1.80, under four years no charge;
- ★ experts from all departments at Baytree will offer help and advice;
- ★ tulip gardens, specially for the festival - entrance free;
- ★ Alan Pell's famous organ music throughout the festival;
- ★ Plants of the World competition (draw will take place on **SUNDAY, MAY 11**);
- ★ permanent children's play area, picnic area, Hop Inn Restaurant, patio gardens, Aladdin's Cave. Each of the three festival weekends has a special theme:

■ **APRIL 26 AND 27** - Baytree's

Gone to Pot, including Spalding Arts and Crafts Society displays, arts and crafts stalls, barbecue demonstration, Duke of Edinburgh Award Scheme display, Baytree resident artist Katy on site (Sunday only).

■ **MAY 3 AND 4** - Baytree's Crackpot Weekend, including Gosberton Preservation Society display (featuring one of the largest collections of stationary engines and tractors ever seen at Baytree) and inter-schools' mosaic and art competitions.

Baytree's resident alpine expert will also be giving demonstrations on unusual features with alpine both days and Monday, May 5.

■ **MAY 10 AND 11** - Baytree's Birthday Party, celebrating the first birthday of the centre's pet department. Events include demonstrations by pet firms and pet nutrition experts, an appearance by the Dulux dog (Saturday only) and parrot

breeders (Sunday only), and aquatics demonstrations.

On **SATURDAY, MAY 10** Baytree Junior Gardening Club will be holding its competition to design and build its mosaics (judging at 11.30am). On **SUNDAY, MAY 11**, there is the annual model car rally.

BOLD Tandem Cycle Marathon

BOLD (Blind Outdoor Leisure Development) Tandem Cycle Marathon, **SATURDAY, APRIL 26**. Blind and sighted cyclists partner each other on tandems for the 16th annual marathon.

Entries are expected from around the world for one of the largest cycle events for blind and sighted people. The event starts from Baytree Nurseries Garden Centre (11.30am) and will take in Weston, Weston Hills, Moulton Chapel, Holbeach St Johns and Whaplode St Catherine. Centre open 9am-6pm; free entry, free car and bus parking; wheelchairs and disabled facilities available.

FOR A GLORIOUS DISPLAY OF COLOUR, CHOOSE YOUR SUMMER FLOWERING BULBS

For a limited period each year - from April-May, August-October - We open our special Retail Bulb Shop from 10am-5pm each day including Sundays to offer what we know are the best bargains for miles.

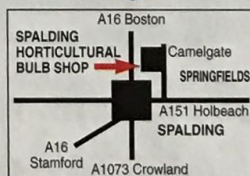
Why not come and see for yourself - you'll certainly save more than the cost of your petrol!

For further information on precise dates of opening of the Bulb Shop please contact our Head Office on Spalding 01775 724097

Spalding Horticultural Bulb Shop

OPPOSITE SPRINGFIELDS

WE ARE HERE



DAHLIAS

PERENNIALS

SHRUBS

GLADIOLI

STONEWARE

LILIUMS

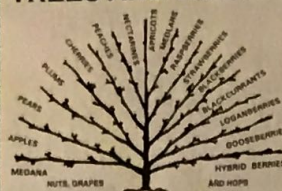
BEGONIAS

Quality at the right price.

GORDON BOSWELL
ROMANY MUSEUM
 Gordon sat in the front of
 one of his Romany Vardo's
 Clay Lake, Spalding,
 Lincs PE12 6BL
 Tel: (01775) 710599



**NATIONAL FRUIT
TREES AND BUSHES**



GROWN BY
Deacons Nursery
 SFP DEPT, GODSHILL,
 ISLE OF WIGHT PO38 3HW
 Tel: (01983) 840750 24hr
 or Tel/Fax: (01983) 522243
 Free catalogue available for 97/98
 (Stamp appreciated)

BELVOIR CASTLE
*spectacular setting, stately
 rooms and delightful gardens*



1997 SPECIAL OFFER
2 FOR PRICE OF 1
(cut out & present at gate)
 OPEN: Tues, Wed, Thurs, Sat, Sun & Bank Holidays
 till end of Sept & Sun in Oct.
 Jousting and other event news 01476 870262
 A day out to remember.

GRANARY MODELS AND HOBBIES
 31 HIGH STREET, SWINESHEAD NR BOSTON, TEL 01205 820115



- ★ DOLLS HOUSES READY MADE 1/12 SCALE MADE FROM MDF BOARD WITH WOODEN WINDOWS, DOORS, STAIRCASES, FROM £70. SHOPS, KITS, etc.
- ★ WALLPAPERS, LIGHTING, FURNITURE, MINIATURES, PLANS
- ★ WINDOWS, DOORS, STAIRS, FITTINGS AND TOOLS FOR DIY
- ★ MINICRAFT DRILLS AND ACCESSORIES
- ★ HOBBY STOCKISTS

MODEL SHIP, BOAT AND GALLEON KITS

SUPERCASET MOULDS
 Good selection in stock.
 Garden gnomes, animals, miniature cottages, chess sets, casting materials, plaster, stonecast fornello

★ MAMOD STEAM ENGINES
 Spares ★
PRINCE AUGUST MOULDS
 for metal casting soldiers

Model Railways for all ages ready to run, gauges '00', 'N', Accessories and Scenics

Open Monday-Saturday 9.30am-5.30pm, Sunday 12 noon-5pm
 OPEN BANK HOLIDAYS



Business to business waste
 management services

For free and friendly advice
 please call:

Sales 0800 307 307
 Service 0800 601 601

Biffa
 WASTE SERVICES

THE NEW ŠKODA FELICIA RANGE

**Make today
 Judgement Day.**



**Test drive the new
 Škoda Felicia today
 and judge for yourself.**

Fleet Road Garage
 36 Fleet Road
 Holbeach
 Spalding
 Lincolnshire PE12 8LA



Volkswagen Group

Telephone
 01406-422457
 01406-422548

Fax
 01406-426196

**LANELLI
 FLOWER FESTIVAL**
Gwyl Flodau Llanelli
 at Peoples Park, Llanelli

**Saturday 30th August
 Sunday 31st August 1997**

*Two day floral and family
 entertainment spectacular*

CARMARTHENSHIRE COUNTY COUNCIL
also sponsored by
 Llanelli Town Council & Llanelli Rural Council

Open to the public
 Saturday 12 noon to 6pm
 Sunday 10am - 5.30pm



SEE YOU THERE

ORCHARD PARK
 Tourist Board Listed Holiday Caravan Park



Licensed Bar
 Angling Lake
 on Site
 Children's
 Play Area

OPEN 1st MARCH TO 31st OCTOBER
only 20 minutes drive from Spalding.
 Many local, historic attractions

FRAMPTON LANE, HUBBERT'S BRIDGE, BOSTON, Lincs
 Telephone 01205 290328

Spring Festival highlights

35

Caribbean Carnival Sunday, May 4

SCHOOLS and community groups from right across South Holland have been working since January to create carnival-costumed bands.

Spalding town centre will explode with a riot of colour, spectacle, music and dance when the Caribbean carnival hits town.

The carnival is the work of Spalding-based Centre Stage.

See page 32 for more details.

Coach tours Various festival days

FOUR coach tours are planned on various days throughout South Holland Spring Festival:



■ **SATURDAY, APRIL 26** - Coach tour to the churches of Northamptonshire and Peterborough Cathedral

■ **THURSDAY, MAY 1** - Church Flower Festival Coach Tour



■ **MONDAY, MAY 5** - Medieval Seabank Trail in search of King John's Jewels

■ **SUNDAY, MAY 11** - Holbeach: the expanding parish (half-day)

To book your place call Spalding tourist information office on 01775 725468.



Concerts, Spalding Parish Church

CONCERTS at the Parish Church of St Mary and St Nicolas Church, Spalding.

■ **FRIDAY, MAY 2; SUNDAY, MAY 4 AND MONDAY, MAY 5**

■ Spalding Royal British Legion Band together with the church choir will perform in a concert at 7.30pm; admission £2.50 adults, under-16s free.

■ The young people of the church will perform in a free concert at 3pm on **SUNDAY, MAY 4.**

■ Spalding Grammar School Concert Band will be giving a concert in the church at 6pm on **MONDAY, MAY 5.**

Admission free.

Concert, St Mary's Church, Pinchbeck

MONDAY, MAY 5.

Theme for this concert featuring the Royal British Legion Band and Pinchbeck East School choir and instrumentalists is Showtime.

For more information about the concert, call David or Tricia Lunn on 01775 725889.

Decorated street animals

OVER parade weekend.

Colourful characters all decorated with tulip heads will be on display around the town centre.

Festival funfair, May 1 to May 5

ROGER Tuby brings his famous funfair to Spalding for five days - at Victoria Street car park.

Something for all the family is promised!

Flower festivals at churches, other venues

HUNDREDS of volunteers have put in thousands of hours of work to put together more than a score of flower festivals across the district.

● See separate listings on pages 30/31 for full details of festivals.



FOWLER • WELCH

one of the UK's leading distributors of fresh flowers, pot plants and produce ...

*... wish every success to the
1997 Spalding Flower Festival*

House and business decorating competition

FRIDAY, MAY 2 TO SUNDAY, MAY 11.

WELCOMING visitors to South Holland Spring Festival will be brightly-coloured and decorated houses and businesses.



Prizes are awarded to the most original displays - entries will be decorated from **FRIDAY, MAY 2 TO SUNDAY, MAY 11.** Judging takes place on **SUNDAY, MAY 4.**

Call Anthony Howling on 01775 760284 if you want to enter.

Miles of Minis, Saturday, May 3

HUNDREDS of Minis will take to the streets of Spalding on **SATURDAY, MAY 3 (1-2pm)** in an attempt on a Miles of Minis world record.



Drivers will be using much of the parade route immediately before Spalding Flower Parade.

Moulton Chapel Tuliptime Parade

SUNDAY, MAY 4.

This small south Lincolnshire village holds its own parade featuring floats, bands and classic cars among other events.

Sculpture and mosaic competition

THURSDAY, MAY 1 TO SUNDAY, MAY 11.

Mosaics and sculptures all

with floral links celebrating the festival and the Children's World theme - the work of businesses, groups and organisations throughout South Holland - will be at venues across the district.

Entries must be decorated with flowers and/or produce.

Judging takes place from 5pm on Friday, May 2.

If you would like to enter, call Anthony Howling on 01775 760284.

Shop window display competition

THURSDAY, MAY 1 TO SUNDAY, MAY 11.

Shops throughout South Holland will be encouraged to dress their windows to celebrate the Spring Festival with prizes awarded to shops with the most festive display (for the South Holland District Council Tourism Trophy) and with the most original display (for the Spalding Chamber of Commerce and Industry Cup).

Judging takes place on **THURSDAY, MAY 1.**

Contact Anthony Howling on 01775 760284 if you want to enter.

Spalding Arts and Crafts exhibition

ON throughout May including festival days of **THURSDAY, MAY 1 TO SUNDAY, MAY 11.**

The society's annual exhibition at the Geest Gallery, Ayscoughfee Hall, Spalding.

Hall opening times are
Monday to Thursday 9am-5pm, Friday 9am-4.30pm, Saturday 10am-5pm, Sunday 11am-5pm, bank



holiday Monday 11am-5pm.

● Telephone 01775 725468 if you would like some more details.



▲ **JOHN GRAY**, of Riverbank Studios, Spalding, with a sculpture which won a prize in a previous mosaic and sculpture competition.

Spalding Bulb Museum and exhibition

OPEN every day of the festival as part of normal opening season - **APRIL 1 TO OCTOBER 30.**

At Birchgrove Garden Centre, Pinchbeck, this fascinating exhibition depicts, through audio-visual equipment and artefacts, the flower industry in South Holland, in particular from 1880 to the present day.

Open: 10am to 4pm daily; disabled facilities, toilets, coffee shop, free parking and free admission (but donations gratefully accepted), garden centre, pet centre, small animal farm and children's play area also available.

Telephone 01775 680490 for details.



▲ **THE VILLAGE** of Moulton Chapel holds its own parade featuring floats, bands and classic cars the day after Spalding Flower Parade.

Spring Festival highlights

37

Spalding Exhibitions '97

SATURDAY, MAY 3.

A range of free events at the Sir Halley Stewart Field, Spalding, from 10am to 5pm including:

- The Biggest Cross-Stitch Party in The World,
- Rover Mini Motorshow,
- 2nd Battalion Royal Anglian Regiment,
- other trade stands,



displays and

- a guest appearance by Mr Blobby.

For more details of these events, see pages 26 and 27.

- Spalding Flower Festival
- Float exhibition
- Springfields Country Fair
- Springfields Gardens

SATURDAY, MAY 3 TO MONDAY, MAY 5

■ Springfields Gardens and Arena, Spalding, is the festival site where many of the main activities are situated over the flower festival period.

■ In addition to the floats, a full

programme of entertainment is provided, including marching bands, flying bird displays with working dogs, gift and craft fair, trade stands,

sponsors' exhibits, pony rides, clowns, Royal Navy static display, children's entertainment, 25-acre spring show garden, restaurant and bar with on-site catering units, toilets and much, much more.

■ The parade of floats with marching bands and other attractions leaves Springfields for the annual tour of Spalding at 2pm on **SATURDAY, MAY 3** and returns at about 5pm where the

floats will remain on display until **SUNDAY, MAY 11**.

Admission to the festival site, float exhibition, country fair and gardens is £5 per adult with accompanied children free. A discount of 15 per cent is given for groups of 20 or more when booked in advance.

Dogs are not allowed except guide dogs. Telephone 01775 724843.

● See pages 21, 22, 24 and 25.



LONDON'S PREMIER FLOWER WHOLESALERS SPECIALISTS IN TOP QUALITY CUT FLOWERS FROM AROUND THE WORLD

We acknowledge our long-standing business association with many local growers. We are especially pleased to be connected with the Spalding Flower Festival & Parade as sponsors of one of the decorated floral floats.

SALES LIMITED
E-Four



242-245 FLOWER MARKET, NEW COVENT GARDEN,
LONDON SW8 5NA

Telephone 0171 627 5222 Fax 0171 622 8261

WHOLESALE FLORISTS



Spalding Photographic Society Exhibition

ON throughout April including festival days **SATURDAY, APRIL 26 TO WEDNESDAY, APRIL 30.**

The society's annual exhibition in the Geest Gallery, Ayscoughfee Hall.

The hall is open Monday to Thursday 9am-5pm, Friday 9am-4.30pm, Saturday 10am-5pm, Sunday 11am-5pm. Call 01775 725468 for more details.



Springfields Show Gardens, Spalding

EVERY day during the festival.

Springfields, Spalding, home of the British bulb industry and one of Britain's premier show gardens, is a mass of tulips, daffodils, hyacinths and spring bedding.

Together with flowering trees, shrubs, woodland walks and carp lake, this 25-acre garden has much to offer.

A bulb museum, semi-tropical glasshouse, garden shop, patio cafe and exhibition facilities complete the Springfields experience.

● Admission (except parade weekend): adults £3, senior citizens £2.70, children free; 15 per cent discount for groups of 20 or more when booked in advance.

● Open 10am-6pm daily including Sundays, with last admissions at 5pm.

Dogs are not allowed except guide dogs. Call 01775 724843.



▲ VISITORS take a break to admire the view at Springfields Gardens, Spalding. (MC10/28)

Spalding Flower Parade's colourful floats will be on show

at the gardens until **SUNDAY, MAY 11.**

'Right good show'

AMONG this year's floats sponsored by businesses and organisations, you will find a special one - the outcome of months of work by one village community.

The float comes from Moulton Chapel, south of Spalding, where the area's second most famous parade is held annually on the Sunday after Spalding parade day.

The design of their entry in the Spalding parade is a closely-guarded secret - but be assured it will also form part of Moulton Chapel's parade the next day.

Preparing and decorating the float, like the whole of the village parade and flower festival, will very much be a community effort, said Eddy Poll, chairman of the village's Tuliptime committee.

Fundraising goes on through the year to help fund the village's festival events, he added.

"We normally get about 2,000 people who come along to see a right good show"



▲ LOOKING over potential designs for this year's Moulton Chapel village float in Spalding Flower Parade are Eddy Poll (village Tuliptime committee chairman) and village designer Jackie Barnes. (N245/36A)

"We normally get about 2,000 people in the village - who come along to see a right good show," Eddy added.

■ Moulton Chapel parade day activities start at 2pm with a country dancing display.

■ That will be followed by a performance by a band from Spalding Grammar School at 2.30pm and

■ the main event of the day - the village parade of decorated floats and vintage cars - at 3pm.

■ The Northampton Pipe Band will round off the day's events with a display at 4pm.

Other attractions will include a decorated church and chapel, craft display, produce and trade stalls and speciality Minis.

Flower festivals in both the village church and chapel continue before and after Sunday's events.

39

[illegible]

Antiques, motorbikes... and flowers

SPRINGFIELDS Gardens may be closed for the summer season, but there is still plenty to return to Spalding to see at the nearby Springfields Exhibition Centre.

The exhibition halls celebrate their fifth anniversary this month.

The new complex was built around the old cafeteria, which itself became the Marquee Suite, complete with carpets and interior lining (hence its name).

The self-service patio cafe - seating 120 people - looks out over the gardens and the 11,000sq ft adjoining main hall has played host to many functions.

Whatever your interest - whether it be antiques, motorbikes, crafts or flowers - there will be something for you during the next few months at the exhibition hall.

There's a full calendar of events from now right until the end of the year, including:

● **TOY TRACTOR FAIR:** To

be held on Sunday, April 13.

● **COMPUTER FAIRS:** Sunday, April 27; Sunday, August 3; Sunday, October 19; Sunday, December 21.

● **TOY, TRAIN AND COLLECTORS FAIRS:** Sunday, May 11; Sunday, November 30.

● **EFPEX 97 (Flowers and Plants Trade Show):** Monday and Tuesday, June 23 and 24.

● **VINTAGE VEHICLE AND CLASSIC CAR SHOW:** Sunday, July 20.

● **COUNTRY MUSIC FESTIVAL:** Friday to Sunday, July 25 to 27.

● **INTERNATIONAL FLOWER SHOW:** Saturday and Sunday, September 13 and 14.

● **CUPID'S BRIDAL EXHIBITION:** Sunday, September 28.

● **ANTIQUES FAIR:** Sunday, October 12; Sunday, December 7.

● **SPALDING MODEL RAILWAY EXHIBITION:** Saturday and Sunday,



▲ **FLASHBACK** to last year's vintage vehicle and classic car show. Get along this year - on Sunday, July 20.

November 8 and 9.

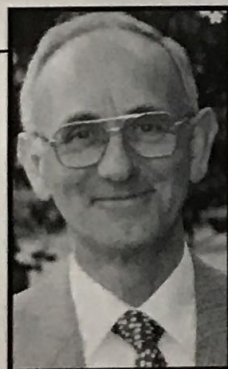
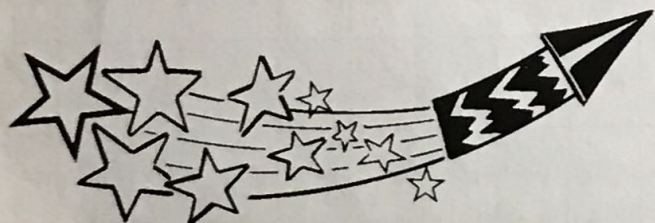
● **CHRISTMAS GIFTS AND CRAFT FAIR:** Saturday and Sunday, November 15 and 16.

Other events will also take place - and visitors are asked to check with Springfields office on 01775 724843 or 01775 713253 when they are

planning a visit.

Or why not return for a special music and fireworks evening - the popular and now annual Music in the Gardens event - on Saturday, July 5?

● Telephone the same numbers if you would like more details.



What does future hold for gardens?

AND what of the future for Springfields Gardens?

Springfields Council, the gardens' governing body, is anxious to secure the future of the gardens for the new millennium.

Redevelopment is planned to transform the site to include a

completely redesigned layout and new facilities.

Gardens manager Peter Atkinson said: "A partner has been approached to help with the redevelopment and it is hoped to submit a planning application this spring."

"If successful, redevelopment could take place this summer for a

planned re-opening in the spring of 1998.

"It has been decided, therefore, that the gardens will not open for the summer season - July to September - but the exhibition halls will continue with their programme as planned."

● **LEFT:** Springfields general manager Peter Atkinson.

If you enjoyed yourself... Come again!

41

SPALDING
FLOWER PARADE 97

A MAY Saturday - or even a long weekend - is just not enough to sample everything South Holland has to offer.

So why not come back again to take a look at:

- ★ the sister museums of Ayscoughfee Hall and Gardens and the Pinchbeck Engine and Land Drainage Museum, which together tell the story of the Fens;

- ★ the area's other museums - the Spalding Bulb Museum and Horticultural Exhibition at Birchgrove Garden Centre, Pinchbeck; Gordon Boswell's Romany Museum, Spalding; and the Museum of Entertainment at Whaplode St Catherine;

- ★ the area's three famous garden centres - Baytree Nurseries Garden Centre, Weston; Birchgrove Garden Centre, Pinchbeck; Rose Cottage Garden Centre, Pinchbeck;

- ★ other attractions, including the Baytree Owl Centre, Weston, and Spalding Tropical Forest, Pinchbeck;

- ★ at Crowland, the ancient monuments of the Abbey and Trinity Bridge;

- ★ at Long Sutton, the famous Butterfly and Falconry Park, with new Reptile Land.

- ★ Spalding Riverside - there are miles of riverside walks beside the River Welland through the heart of the town.

- ★ South Holland markets - traditional markets are held in Spalding on Tuesdays and Saturdays, in Holbeach, Long Sutton and Crowland on Fridays.

And if you time your next visit well, it could coincide with one of the town's Spalding on Saturday events.

They are a series of activities held on summer Saturdays designed to encourage shoppers to visit Spalding and to give groups and organisations the opportunity to promote themselves.

Hobbies, wildlife and conservation, fun and fitness, heritage, arts and crafts and flowers and gardens are among the themes chosen for this year.

Participants will take to the town centre, featuring in displays and live demonstrations.

- ★ For more details on any of the attractions above, call Spalding tourist information office on 01775 725468.



Finally...Did you know?

- ★ **BRITAIN** now leads the way as the world's largest producer of daffodils.

More than 10,000 acres are given over to growing them, and the majority of those are in south Lincolnshire.

- ★ **UP TO 200,000** bulbs have been planted at Springfields Gardens, Spalding, for this year's spring display.

- ★ **PHOTOGRAPHERS** working for the

Lincolnshire Free Press and Spalding Guardian (publishers of this guide) together take more than 500 pictures of parade floats each year.

- ★ **TOGETHER** this year's floats will cover more than 40 miles of Spalding roads - four miles per float.

- ★ **HUNDREDS** of volunteers at more than a score of churches across the area put in thousands of hours of work preparing for flower festivals.



SHOWROOM: 148 STATION ROAD,
WHITTLESEY, PETERBOROUGH

6 Windows 5 x Openers Any Size

from £995 or £4.92pw
subject to status

7 Windows 6 x Openers Any Size

from £1175 or £5.80pw
subject to status

5 Windows +2 Resi Doors

from £1575 or £7.780pw
subject to status

EXAMPLES EXAMPLES

**YOU "WON'T" BUY BETTER
FOR LESS ANYWHERE**

HOTLINE FOR YOUR FREE QUOTE

(01733) 350900

VISIT YOUR LOCAL *Argos* STORE AT

UNIT 4
HOLLAND MARKET
WINFREY AVENUE
SPALDING

FOR A WHOLE CATALOGUE OF ANSWERS

Argos

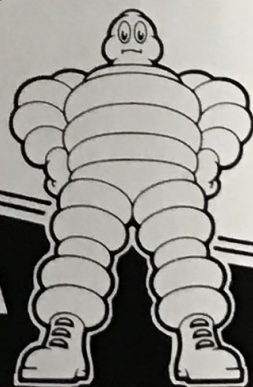
TAKES CARE OF IT



MICHELIN

leads the way—

Britain's leading tyre maker shows the way. Car, van, truck or bus; wet, dry or muddy; blazing sun, arctic front or something in between – it comes the same to Michelin Tyres. For grip, performance and long life, Michelin tyres are world renowned, they give the best in all conditions and provide real value for money.



MAKE SURE IT'S A

MOVING?

- ★ Removals Storage
 - ★ House Clearances
 - ★ DIY Removals
 - ★ Free Quotations
 - ★ Distance no object
- For total peace of mind call
Peace of Mind

**K. V. AGRICULTURE**

Manufacturers and
Suppliers of Fertiliser

Very competitive prices

Ring now for a quote

Telephone Mike Woolley
on

(01775) 750576

Fax: (01775) 750097

Copper Beech House

Clough Road

Gosberton Risegate

Spalding PE11 4JW

AbbeyPrint

Colour Printers

Commercial Stationers

Wedding & Personal Stationery

Benner Road, Wardentree Lane

Pinchbeck, Spalding

Tel: (01775) 724771

Fax: (01775) 711453

Ample Parking

British Fuels

YOUR 'LOCAL' COAL MERCHANT

at

11 Station Street, Donington

Call (01775) 820403

4 Bond Street Court, Spalding

Call (01775) 722719

Fireside Shop, Long Sutton

Call (01406) 364149

3 Emery Lane, Boston

Call (01205) 364313

97 Southgates, Sleaford

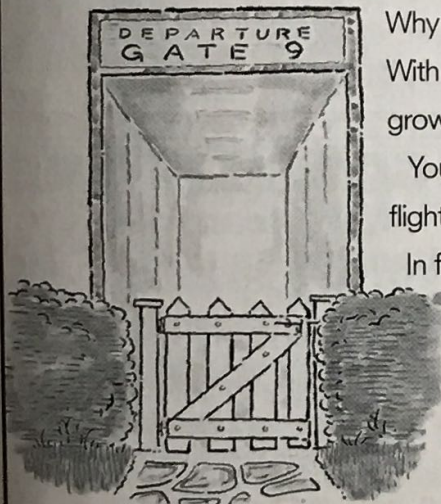
Call (01529) 302575

BRITAINS LEADING

**COAL
MERCHANT**



OVER 100 HOLIDAY DESTINATIONS ARE CLOSER THAN YOU THINK



Why waste time and energy battling with the journey to other airports? With Stansted practically on your doorstep you're in easy reach of a growing range of holidays.

You'll find all the top tour operators offering inclusive holidays, or flights, for summer and winter sun, skiing and short city breaks.

In fact, there are over 80 holiday companies offering services to more than a 100 destinations. Including Florida, the Balearic Islands, the Canaries, the Greek Islands, Mainland Spain, Portugal, Italy, Southern France, Malta and Turkey - and more!

For a closer look call your travel agent or 0345 118 118.

CALL YOUR TRAVEL AGENT, OR 0345 118 118

BAA Stansted

LONDON'S ALTERNATIVE AIRPORT



SHIP ALBION

Albion Street
Spalding 769644

VISIT US TULIP WEEKEND

Bed & Breakfast

Bar Snacks

Pool Table

Beer Garden

Fruit Machine

Darts

Sky TV

Car Parking

Breakfast from 9am
onwards on Tulip Weekend

THE QUEENS RESTAURANT

(65 seats)

at

THE ROYAL MAIL CART

Pinchbeck Road, Spalding



3 COURSE
SUNDAY
LUNCHES
A la Carte Meals.
Weddings,
Christenings and
Parties catered for

DISCO FACILITIES

To book telephone
(01775) 722931

KING'S HEAD BAR

&

QUEENSGATE HOTEL

Westlode Street, Spalding

Telephone: (01775) 711929

★ Lunchtime Meals & Bar Snacks

★ Evening Meals

★ Real Ales

★ Light Entertainment

*All are welcome to come and relax
in our warm & friendly atmosphere*

*When in Spalding
visit*

TULIPS COFFEE HOUSE

OPEN ALL
FLOWER PARADE
WEEKEND

Coffee & Tea
Delicious home cooked food
27 RED LION STREET,
SPALDING, Lincs
01775 766316

JOLLY FARMER

Moulton Chapel • (01406) 380042

FREE HOUSE - REAL ALES

Beer Garden with large secure childrens play area

DAILY SPECIALS & GREAT VALUE BAR MEALS

T-Bone Steaks 8oz Rump Steak 8oz Gammon

Scampi ★ Seafood Platter ★ Mixed Grills

Sausages ★ Burgers etc

Served Tuesday-Sunday 12 noon-2pm

Wednesday-Saturday 7pm-10pm

Sunday 7pm-9pm

LEO's

PIZZA PASTA PLACE

A La Carte Restaurant or Take Away

Free Local Delivery

OPENING TIMES

Monday: Closed

Tuesday: 5.00pm - 10.00pm

Wednesday: 5.00pm - 10.00pm

Thursday:

5.00pm - 11.30pm

Friday:

5.00pm - 1.00am

Saturday:

5.00pm - 1.00am

Sunday:

5.00pm - 11.00pm

23 Winsover Rd, Spalding
01775 762227

*Carters
Arms*

Home Cooked Food at reasonable rates

Bar Snacks • A La Carte
Vegetarian Dishes • Childrens Menus

Beer Garden

Enclosed Childrens Play area

Live Entertainment Most Weekends

Caravans Welcome for overnight stops

Large Carpark

The Carters Arms
High Road, Weston

For further details
Telephone Brian on:

01406 370407

LIVE MUSIC EVERY SATURDAY

Beer Garden with Childrens Play Area

OUTSIDE BAR FACILITIES AVAILABLE

Coach Parties Welcome

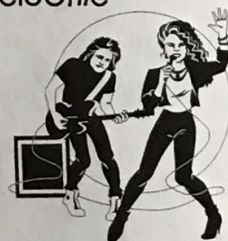
FOOD

at

THE CROWN INN

West Street, Crowland

(01733) 210297



THE GOOSE FAYRE

New Road,
Quadring Eaudyke

have a

CARAVAN & CAMPING SITE AND BEER GARDEN

Sunday Lunches - 12 noon - 2pm

(bookings preferred)

Home Cooked Lunches & Evening Meals

12 noon - 3pm & 7pm - 10pm

Tel: (01775) 840083

CLOSED ALL DAY MONDAYS

LONGSTAFF**ESTATE AGENTS**Est
17705 New Road, SPALDING
(01775) 7667662 West End, HOLBEACH
(01406) 4227608 High St. MKT DEEPING
(01778) 342466**SPECIALIST DEPARTMENTS INCLUDING****RESIDENTIAL • COMMERCIAL • AGRICULTURAL
SURVEY AND VALUATION • AUCTIONS • LETTINGS
AND MANAGEMENT • MORTGAGE & INSURANCE**

Serving SOUTH LINCOLNSHIRE for over 200 years

For the best selection of homes available
ring the market leaders today!
HOUSES AND BUNGALOWS
FROM £25,000 - £250,000 BRAND NEW & RESALE

Properties with land always available8 BRIDGE STREET, SPALDING
LINCOLNSHIRE PE11 1XA

RING
(01775) 767575
We're here to help
Open 7 days
Weekdays till 7pm

**MUNTON &
RUSSELL****ESTATE
AGENTS
VALUERS
SURVEYORS
AUCTIONEERS****THINKING OF MOVING?**

We offer:

- ★ RESIDENTIAL SALES AND LETTINGS
- ★ QUALIFIED RICS INDEPENDENT SURVEYOR
- ★ REGULAR FURNITURE AUCTIONS
- ★ AGENTS FOR THE KENT RELIANCE BUILDING SOCIETY
- ★ NATIONAL HOMELINK SERVICE
- ★ TWO LOCAL OFFICES

FOR THE COMPLETE PROPERTY SERVICE CALL US TODAY!

SPALDING 01775 722475 HOLBEACH 01406 426274
WE WILL HELP YOU MOVE!

SEEDGE HOMES
Estate Agents

*We offer a wide selection of properties in South Holland**Example:*

- ★ Detached two bedroom bungalows
From £47,250 (Brand New)
- ★ Detached three bedroom houses
From £45,000
- ★ Detached four bedroom with en suite
From £60,000

*If you would like more details call (01406) 422907***Welland****Holiday Hire and Sales Centre Limited****Britains Leading Showroom****THE COMPLETE CARAVAN CAMPING SHOWROOM**

A drive to the country finds you the BEST DISPLAY IN THE U.K. Freedom to park and choose at your leisure, plenty of space to have a picnic and take your dog for a walk, ample on-site parking, even with your caravan. Expert advice, friendly service, superb indoor display in our heated showroom. Always at least 60 awnings and porches on show with vast supporting stocks to enable you to take away your purchase with you. Around 70 new caravans shown to perfection inside our showroom. Outside you will find the BEST choice of quality previously owned caravans. Extensive indoor and outdoor display of leading brands of tents. To complete your FULL DAY OUT - pop in to our 60 seater restaurant. The company recently awarded "Electrolux Retailer of the Year 1995"

THE SALES TEAM

We really are the EXPERTS! The Welland Sales Team have a wealth of experience within the field of Caravan and Camping Sales, many of the Team using Caravans, awnings and tents for their own holidays and breaks, gaining experience and knowledge to help them give every one of our customers the very BEST help and advice.

SERVICE AND REPAIR

Our workshops are 5 star rated by the caravan Club and National Caravan Council are equipped to undertake all necessary service and fitting requirements as well as accident repairs from major rebuilds to minor blemish rectification. We are an approved Service Centre for Al-Ko, Carver, Thetford Porta Potti and the only caravan retailer to have security approval and fitters trained to install the TRACKER stolen vehicle tracking system. Our caravan workshop offers a repair and alteration service to all canvas products.

CARAVANS

Used caravans: Our choice is enormous £300-£10,000 quality nearly new, excellent middle of the road and bottom end bargains lined up and ready to go.

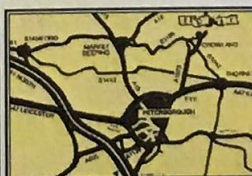
New caravans: Seven leading franchise all offering layouts from 2-6 berth.

• SWIFT • ABBEY • AVONDALE • STERLIG • LUNAR • COMPASS • BAILEY •

AWNINGS AND PORCHES

The largest display of awnings in the U.K. Prices from £120 to £1,200 in colours, styles and sizes to suit every caravan. Awnings by:

• ISABELLA • TRIO • OBI • NR COMPONENTS • BRADCOT • SALOU •
• HARRISON • APACHE •

YOUR FRIENDLY EXPERTS - WELL AND TRULY WORTH THE VISIT**01733 210560**

OPEN: MON - SAT 10AM-5PM
SUN 11AM-5PM

Welland Holiday Hire & Sales Centre Limited
Postland Road, Crowland, Peterborough PE6 0JB

Gosberton House**Nursing Home****Westhorpe Road, Gosberton, Lincs**

A large Georgian house set in its own grounds in the heart of this attractive village. Our unrivalled team of professional staff offer friendship, care and comfort for a happy retirement.

Please contact Matron for further information.

Matron: Stephanie Hewat-Jaboor, RGN

Telephone: 01775 840581



**HOVENDON HOUSE,
FLEET, SPALDING,
Lincs PE12 8LP**

**RESIDENTIAL
NURSING HOME
AND DAY CARE
CENTRE**

Offering Choice of Opportunity
to People with Disabilities.

Tel:

(01406) 423037

The Cats Protection League

Holbeach & District Group

Reg Charity No 203644

Helping and re-homing
unwanted cats & kittens

**JUMBLE & BRIC-A-BRAC
ALWAYS URGENTLY REQUIRED**

such as unwanted gifts, also sponsorship for
permanent residents and long stay cats.

Offer of help greatly appreciated - the most
valuable thing you can give us is your time.

LET US KNOW IF YOU CAN HELP

Contact Sandra 01775 769560

Alison 01775 766492

Alan & Yvonne 01775 722334

David & Mary 01945 870201



INVESTOR IN PEOPLE

THE ORDERS OF ST JOHN TRUST



Registered Charity
Number 800274

Lincolnshire Homes

Chairman:

The Earl of Gainsborough JP

The Trust

A non-profit making Charitable Trust formed
from an ancient Order of Chivalry dedicated
to the support and care of the elderly.

Our Philosophy

A shared commitment to Care which provides
the individual

- ★ Choice ★ Rights ★ Fulfilment
- ★ Independence ★ Privacy ★ Dignity
- ★ Happiness

Our Aims

- ★ Provision of a high quality care service –
day care, short term respite care, permanent
residential care and outreach services.
- ★ Staffed with experienced, dedicated,
friendly and highly trained personnel.

Lincolnshire Homes

Sixteen throughout the county.

For further information call the
Home Manager,

Digby Court, Bourne: 01778 422035

Patchett Lodge, Holbeach: 01406 422012

South Field House, Spalding: 01775 724612

Cats Protection League • Quadring District Reg. Ch. No. 203644

Moulton Chapel Shelter

RESCUING AND REHOMING STRAY AND UNWANTED CATS AND KITTENS

Open over the Bank Holiday 11am-4pm daily.

Enjoy looking at our beautiful rescue cats, see the comfort our
pensioner cats have been given to spend the rest of their days.
Visit Moulton Chapel Flower Festival Sunday 4th May 1.30pm
onwards. See our spectacular float and many others entered by
local schools and businesses.

To visit Moulton Chapel Flower Festival and to visit the cat
shelter will cost you nothing, so come along and enjoy yourselves

For further Information contact Monica on: 01406 380520
White House, Oxcroft Bank, Moulton Chapel, Lincs PE12 0XT



SHAW-LINC



VOCATIONAL TRAINING CENTRE

**5 ENTERPRISE WAY
SPALDING PE11 3YR**

Tel: (01775) 712414

Fax: (01775) 712525

**NATIONALLY RECOGNISED
QUALIFICATIONS GAINED
WHILST PROVIDING
A COMPREHENSIVE
PRINTING SERVICE FOR
THE LOCAL COMMUNITY**

(PLEASE CALL OR VISIT)

Yes it's true...



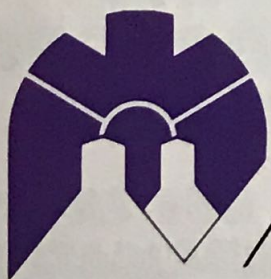
One-stop magazine typesetting, design, desk-top publishing, pre-press, **advertising sales**, print, finishing, despatch and **magazine distribution**.

One source means more efficient use of your time and no communication problems. All our services are on the same site and run by people who actually talk to one another.

For publishers and print buyers who want to pick and choose the services they need, and for those that want a total package.

We can tell you what is involved at every stage and what is possible.

With over 260 titles in our care, at Warners we have known how to make pigs fly since 1926.



WARNERS Midlands plc

HEAT SET WEB & SHEET FED LITHO • UV VARNISHING • SITMA MAILING

The Maltings, West Street, Bourne, Lincolnshire. PE10 9PH
Telephone: 01778 391000 Fax: 01778 394269

There's Nothing Like The Peace Of Lincolnshire Countryside



THE BERKSHIRE: 3 Bedroomed detached bungalow with single garage at £56,950

ASHWOOD HOMES
are currently developing at a
variety of locations in
South Lincolnshire.

Our range of properties include:
2, 3 and 4 bedroom houses and bungalows
Prices from £46,500 - £129,950
All properties are freehold and are built to
a high specification with style and quality
you can depend on.

Especially When That Piece Is Your Own

For Further Details Contact The Sales Centre at Fishtoft, Near Boston 01205 366366
Great Choice • Great Value • Great Homes



**SPECIALISTS IN
ALL TYPES OF
WASTE DISPOSAL
DEPOTS
THROUGHOUT
THE AREA**

**WE ARE PLEASED TO USE FABRICATORS
M.J.L. WELDING & FABRICATIONS LTD.**



Peterborough Depot Tel: 01733 223231

Roses are Red,

Violets

are

Blue...



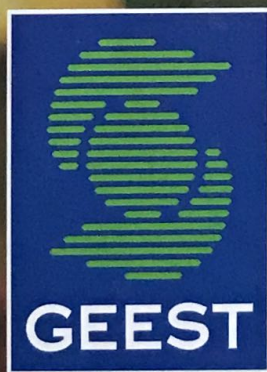
**...And Crisanthymums
are really hard to spell!**

SAFEWAY

Lightening the load

Hollands Market, Spalding

A fresh
approach



Geest PLC.

West Marsh Road, Spalding, Lincolnshire. PE11 2BB.

Tel: 01775 761111 Fax: 01775 763009