

£1.20



# SPALDING 95

## FLOWER PARADE

### OFFICIAL PROGRAMME

**S**OUTH HOLLAND 95  
SPRING FESTIVAL

**S**PRINGFIELDS 95  
WORLD OF FLOWERS





# FOR A GLORIOUS DISPLAY OF COLOUR, CHOOSE YOUR SUMMER FLOWERING BULBS

For a limited period each year - from April-May, August-October - We open our special Retail Bulb Shop from 10 am-5pm each day including Sundays to offer what we know are the best bargains for miles. Why not come and see for yourself - you'll certainly save more than the cost of your petrol!

For further information on precise dates of opening of the Bulb Shop please contact our Head Office on Spalding 0775 724097.

DAHLIAS

STONEWARE

PERENNIALS

LILIUMS

SHRUBS

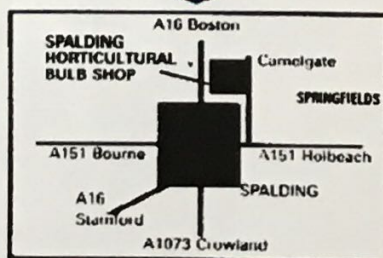
GLADIOLI

BEGONIAS

## Spalding Horticultural Bulb Shop

OPPOSITE SPRINGFIELDS

WE ARE  
HERE!



*Quality at the right price*

# All change for '95 Flower Parade

1

**SPALDING**  
FLOWER PARADE **95**

**W**ELCOME to the 37th Spalding Flower Parade!

Our visitors will notice a few changes to this year's parade - but they are all explained in detail in this programme.

There's a new route (see page 4), new festival site where the parade starts and finishes (see pages 13-19) and a new start time - 2pm.

This year, for the first time, there is also a collection - so be prepared to show your appreciation.

But our 37th parade - on Saturday, May 6 - still contains all those special ingredients that has made it so popular with visitors over the years!

This year the organisers have chosen World of Books as the parade theme - coinciding rather nicely with Thomas the Tank Engine's 50th anniversary!

Thomas fans old and young will enjoy Broadgate Builders' Thomas the Tank Engine float in the parade.

And there are a few other book favourites to look out for in the parade - such as Alice in Wonderland and Beatrix Potter.

□ We have a super children's competition (see page 11) with a chance to win Thomas the Tank Engine and other books.

The flower-covered floats are a wonderful spectacle which can't fail to delight - even when rain does occasionally dampen spirits.

The floats are the big attraction - but we also have an exciting line up of entertainment for visitors (see pages 13, 21, 24, 25, 26) at Springfields' World of Flowers (a short trip by shuttle bus from Spalding

town)

□ The focus for entertainment this year is SPRINGFIELDS GARDENS

where visitors can enjoy the float display (apart from when they are on parade between 2-5pm on Saturday), the gardens and a varied programme of entertainment.

□ This year's PARADE is on Saturday, May 6 and there will be entertainment right through the holiday weekend, including Monday, May 8.

□ Once again South Holland Spring Festival committee has put together a varied programme of entertainment both before and during the parade weekend (pages 27-37).

□ And of course the churches in Spalding and throughout the district are once again a stunning sight, decorated in flowers by tireless volunteers.

In fact the contribution to "Tulip Time" by one of our churches, Moulton Parish Church, has been recognised with an award this year (see page 26).

Take time to explore all that South Holland has to



## INSIDE

**SPALDING**  
FLOWER PARADE **95**

**New for '95 - start  
time, parade route,  
festival site  
Pages 1-26**

**SOUTH HOLLAND**  
SPRING FESTIVAL **95**

**Sixteen days of  
entertainment  
Pages 27-37**

**SOUTH HOLLAND**  
CHURCH FLOWER  
FESTIVALS **95**

**Page 36**

**SPRINGFIELDS**  
WORLD OF FLOWERS **95**

**Pages 38-41**

**Parade  
theme is  
World  
of Books**

*Collection for first time this year  
- so please show your appreciation!*

© THIS production is copyright to the Lincolnshire Free Press and Spalding Guardian. No part of it may be reproduced without our permission.

Published by the Lincolnshire Free Press and Spalding Guardian, Priory House, The Crescent, Spalding, in conjunction with

Springfields and Spalding Flower Parade Committee.

Origination and advertising typesetting by A T Graphics, 4 Milnyard Square, Orton Southgate.

Printed by Warners (Midlands) plc, Manor Lane, Bourne.

## SATURDAY, MAY 6, 2PM

SPALDING Flower Parade will leave its new home at Springfields Gardens, Camelgate, Spalding, at the new time of 2pm on Saturday, May 6, and travel on its new clockwise route around the town. It is expected back at Springfields at around 5pm.

For their safety spectators are advised not to block the road on the route.

At around 1pm the Old Romsey Cadets celebrating their 20th year in the parade, will leave Springfields to entertain the crowds in their mad-cap style.

The Michelin bus with the Die Apfeltizers Oompah Band will follow, together with the public address system giving out those vital details on the parade's progress.

### 1 Police Horses.

By kind permission of the Chief Constable of Nottinghamshire.

### 2 Chairman, Spalding Flower Parade.

Mr Brian Drury, Range Rover courtesy of Parkside Motors Ltd of Kirton.

### 3 Flower Queen 1995.

Entered by South Holland District Council, the leading float conveys the South Holland Flower Queen and her deputy, the girls chosen to represent the district throughout the year. Attendants have been chosen from six local secondary schools.

### 4 Thirteenth City of Coventry Scout Marching Band

Director Mr R H Newell. 30th appearance in the parade. Sponsored by the Spalding and District churches.

### 5 The World of Peter Rabbit (Beatrix Potter © Frederick Warne and Co)

Entered by Lingarden Ltd, a regular in the flower parade, who are best known for their colourful bulb prepaks in many of the large multiple outlets. In addition, they are the leading UK suppliers of cut flowers to the multiples and are now able to offer a next day delivery service of bouquets direct to private households, hospitals, etc. IF YOU HAVE SOMETHING TO SAY - SAY IT WITH FLOWERS

### 6 Entered by Geest Plc

The Geest name might be famous for bananas but in fact, it is also the UK's largest supplier of salads and fresh chilled foods such as pasta, bread, dips and soups. The Geest float celebrates the launch of Necta; the unique fresh peeled and cored pineapple which, due to revolutionary new packaging, arrives in this country as sweet and ripe as the day it was picked.

### 7 Derby Serenaders Band.

Musical Director Mr M F Ward.

### 8 Breakdown vehicle - just in case!

### 9 Miss Jersey Battle of Flowers.

Miss Sandra Neves riding in a landau supplied by Mr G Boswell of Clay Lake, Spalding.

### 10 Young Farmers on Parade.

Entered by Spalding and District Young Farmers' Club. Their annual float is totally designed and built by members. The Young Farmers' catering is on the arena at Springfields Gardens where they provide



▲ DISTINCTIVE in their attractive, hunting-style uniform, the Melton Mowbray Tally Ho Band entertains the crowds with their colourful marching displays and concert work. Formed in 1936, the band has always tried to help local and national charities as much as possible.

good country food. All proceeds go to local charities and club funds.

### 11 Vintage Jazz by The Original Eastside Stompers

Manager Mr Ernie Hodgson. Sponsored by Express Newspapers. Electric towing tug provided by J Bradshaw Ltd of Stibbington.

### 12 Long Sutton and District Veteran Cycle Club.

Secretary Miss N A Wellband. Again, congratulations on your 35th Flower Parade appearance.

### 13 The Electronic Book

Entered by the Lincolnshire University Project Spalding Support Group. A unique feature of the University College for Lincolnshire opening in October 1996 is the Access Network. This state-of-the-art technology will provide electronic access to the university from all the main centres in the county. In Spalding the support group is looking at both how the academic programme relates to the community and providing support in fundraising.

### 14 Thomas the Tank Engine

Entered by Broadgate Builders (Spalding) Ltd. Thomas is really looking forward to the Spalding Flower Parade. He can't wait to say "Hello" to everyone while he's travelling around the town and he especially wants to meet all his friends at Broadgate Homes. He knows they build the finest selection of houses and bungalows in Lincolnshire. For further details about Broadgate telephone 01775 711637.

## Flower parade special

The Lincolnshire Free Press for Tuesday, May 9 will carry a souvenir supplement about the 1995 Spalding Flower Parade.

Order your copy now by taking this coupon to your newsagent or by sending it with your remittance to the address below.

**Lincolnshire**  
*free press*

Dear Newsagent/LFP (delete as applicable)  
Please reserve/send me.....copy/copies of the Lincolnshire Free Press dated Tuesday, May 9

Name.....

Address.....

To receive your copy by post please send a cheque or postal order made out to Welland Valley Newspapers Ltd for £1 (including post and packing) to Flower Parade Special, Welland Valley Newspapers Ltd, Sheepmarket, Stamford, PE9 2QZ.

● If you wish to have the Lincolnshire Free Press/Spalding Guardian delivered to your home every week, please tick the box ☐

# Order of parade

**15 Melton Mowbray Tally-Ho Band.**  
Secretary Mr A G E Cragg.

**16 World of Nursery Rhymes**  
Entered by Turners Turkeys, one of the major UK turkey producers. Export sales account for 40 per cent of their production, mainly into the European market, with the other 60 per cent being sold into the UK to major turkey processors who supply the high street retail trade.

**17 Breakdown Vehicle**

**17a Charity Collection Vehicle - Rotary Club of South Holland**

**18 Make Room for Flowers and Plants**

Entered by the Flowers & Plants Association, New Covent Garden, London. The Association encourages the public to buy more flowers and plants by keeping people informed about the wide range of products available and advising on how to care for them properly, so as to make them last longer.

**19 Miss Lincolnshire Free Press and Spalding Guardian 1995.**

Amanda Smith in an open topped decorated car.

**20 Blue Eagles Drum and Bugle Corps from Essex**

First time appearance for this band formed 30 years ago. Winners of the British Drum Corps Championship and British Youth Band Championship in '89, '90, '91 and '92.

**21 My Little Gardening Book**

Entered by Springfields Gardens. Now in its 29th year the garden features the most comprehensive UK display of tulips and daffodils. Set in 30 acres of woodlands, lawns, together with patio cafe, shop, toilets, this venue is open daily April to September. Visit this weekend - see the flowers and enjoy the entertainment.

**22 Farmers' Glory by A G Street**

This year's float makes a clear association with farming in the region in the form of a tractor carrying a vegetable box. We are celebrating the diversity and goodness of greens. The crisp cabbage, the creamy cauliflower - endlessly adaptable and ideal partners for the fresh salads and fruits from the British countryside.

**23 Bookworm**

Entered by Lincolnshire County Council Library Services. Lincolnshire offers 52 libraries, mobile services and many other opportunities for personal and community education, information, recreation and leisure. Step into a Lincolnshire library and turn over a new leaf. Membership is free.

**24 Food, Glorious Food**

Entered by Lincolnshire Training and

3

**SPALDING**  
FLOWER PARADE **95**



## On their bikes for 35th time!

**MAKING their 35th appearance in Spalding Flower Parade are members of Long Sutton and District Veteran Cycle Club!**

The "eccentric" cycle enthusiasts (the word used by one of its members!) will pedal

round the route, with ready smiles and looking charming in their period costumes.

Flower parade regulars particularly enjoy the antics of the Penny Farthing riders!

Give them a big cheer as they pass by.

Enterprise Council. Lincolnshire TEC, together with local food companies and the Spalding Grammar School Big Band, is having a 'Dickens of a good time' with this year's float and its cookery book theme. The TEC's aim is to foster the economic prosperity of Lincolnshire. We achieve this by working in partnership with other organisations - our recipe for success!

**25 Flower World**

Entered by E Four Sales, New Covent Garden Market, London. One of the country's leading wholesalers of flowers especially Lincolnshire grown.

**26 Derby Midshipman Band**

First appearance in the parade. Previous winners of Springfields Marching Band competition.

**27 Alice in Wonderland**

Entered by Midland Bank Plc. Your local bank in the community. We invite you to a world of dreams and imagination with Alice and her friends at the Mad Hatter's Tea Party.

**28 Breakdown vehicle - just in case!**

## Please give generously...

**A**FTER 36 years Spalding Flower Parade Committee has had some difficulty in financing the parade and a substantial loss was incurred in '94.

Although the floats are sponsored by individual companies and organisations, much of the expenditure, including entertainment, bands, travel costs and feeding, is not recoverable. Many visitors have asked how they could help. This year they are able to do so.

A street collection will take place during the parade. This will be collected by the Rotary Club of South Holland for charity

and they pledge to donate 50 per cent to the Spalding Flower Parade funds to ensure its future success.

Members of the Rotary Club will collect with the Romsey Old Cadets band prior to the parade and a second collection unit, with collectors, will cover the second half of the parade.

Watch out for the collectors in fancy dress and please give generously for the charities and help secure the future of the parade.

**PETER ATKINSON**  
Flower parade organiser



## Important route changes for '95

**T**HERE are important changes to Spalding Flower Parade and its route for 1995!

- Due to Spalding town centre redevelopment the flower parade route is in the opposite direction this year, i.e. clockwise, and does NOT pass down Pinchbeck Road or Winfrey Avenue.

- The parade starts at 2pm from Springfield Gardens and travels round

Spalding on a four-mile route, returning to Springfield at approximately 5pm where the floats will be on display after the parade.

- The old Sir Halley Stewart Field site will NOT be used.

APPROXIMATE timings for the flower parade are: 2pm - the head of the parade leaves the arena in Springfield Gardens,

Camelgate; 2.15pm - NFU Offices, Camelgate; 2.30pm - Holbeach Road; 2.40pm - The Birds Inn, Holbeach Road; 3pm - Cley Hall Drive; 3.10pm - Stonegate; 3.20pm - Love Lane (river end); 3.40pm - High Bridge over River Welland; 3.50pm - junction of New Road/Hall Place; 4.10pm - Albion Street/Double Street junction; 4.15pm - West Elloe Bridge; 4.30pm - return to arena.



5

**SPALDING** 95  
FLOWER PARADE

● LEFT: King Neptune and creatures of the deep were the contribution in 1994 from Olau.  
(KC4/12A)

● BELOW: Frogs, ducks and ducklings on Geest's float in 1994 captured the Mother Earth theme.  
(KC6/34)

# Fabulous floral floats



**T**HE 37th annual Spalding flower parade has the theme World of Books.

Floats and marching bands will show the world why the parade is an international event attracting tens of thousands of visitors.

The floats, up to 50 feet long, are covered in flower heads and other decorations to celebrate the district's claim to be the centre of the British bulb and flower industry.

On this page are photographs from last year's parade.

● BELOW: Protecting wildlife the Broadgate Builders way.  
(KC12/35)



**CAMERAS**  
FROM .....£20



**CAMCORDERS**  
FROM .....£450

**WELEC**

NEW ROAD, SPALDING ☎ (01775) 724247

# So what's new in '95?



● ABOVE: Parade chairman Brian Drury and Peter Atkinson (general manager Springfields World of Flowers and flower parade organiser).

**T**HERE are important changes to Spalding Flower Parade 1995, on Saturday, May 6.

The most important change is that this year's route is different (see page 4), a change brought about because of town centre redevelopment plans.

The route is now in the opposite direction and does not pass down Pinchbeck Road or Winfrey Avenue.

The parade starts at 2pm - slightly later - from Springfields' World of Flowers and returns there at about 5pm. The floats will be on display at Springfields Gardens throughout the weekend - apart from parade time.

The old festival site at Sir Halley Stewart Field will not be used, again because of the redevelopment plans.

This year, for the first time, South Holland District Council is underwriting the parade - to meet losses if there are any - to a maximum of £15,000.

As part of that agreement, a street collection is to be held to help offset some of the costs of the parade and to help local charities.

Mr Peter Atkinson, general manager of Springfields' World of Flowers, said: "Following the losses incurred by the flower parade committee after the 1994 parade,

when it rained on parade day and numbers were down considerably, the flower parade organisers had discussions with South Holland District Council and the upshot is the council agreed to underwrite the Spalding Flower Parade up to £15,000 for 1995, subject to conditions.

"One of those conditions was that a street collection should be held on flower parade day for the benefit of local charities and the organisers to help them defray costs incurred which they couldn't pass on to float sponsors.

"For instance marching bands, entertainment in the parade and a lot of other costs. We have to remember that only 50 per cent of the income for the parade comes from sponsors and the rest has to be gained from the float exhibition which is held on the Saturday, Sunday and Monday."

He said bringing the float display, entertainment and festival site to Springfields' World of Flowers made it into a one-stop/one-price venue for visitors.

● Entry is £5 on Saturday, May 6, Sunday, May 7 and Monday, May 8 accompanied children free.

**WHERE to park, where to eat, where to shop ....**

SOUTH Holland Council has produced a

Spalding town map in a booklet containing other useful information, available from Tourist Information (01775 725468) at Ayscoughfee Hall, Churchgate, Spalding.

The booklet lists attractions - newest are the Tropical Forest at Pinchbeck and the Romany Museum at Clay Lake, Spalding - as well as car parks, gift shops and places to eat.

**RESTAURANTS listed include:** Cley Hall Hotel, High Street; Crystal Inn, Churchgate; Fratelli Ristorante, Double Street; Golden City, The Crescent; Red Lion, Market Place; Shaheen Tandoori, Pinchbeck Road; Springfields, Camelgate; Queensgate Hotel, Westlode Street; Woodlands Hotel, Pinchbeck Road.

**PUBS include:** Bull Inn, Churchgate; Black Swan, New Road; Birds, Halmergate; Chequers, Swan Street; Lincolnshire Poacher, Double Street; Pied Calf, Sheep Market; Royal Mail Cart, Pinchbeck Road; White Horse Inn, Churchgate.

**CAFES, fish and chip restaurants, takeaways:** Ayscoughfee Gardens Cafe, Churchgate; Bingol Kebab and Pizza, New Road; Chesters, New Road; Crispy Cod, Winsover Road; Delight Chinese Takeaway, Westlode Street; Nuccios, New Road; Ospreys, The Crescent; Prior's Oven, Sheep Market; Sea Breeze, Sheep Market; Tulips Coffee House, Red Lion Street; Turners Fish Restaurant (Sheddy's), New Road; Wimpy, Market Place; Welland Restaurant (Hills), Market Place.

● For information about church flower festivals' catering, see page 36.

**Different route, different time, collection, one-stop/one-price festival site**

## Let shuttle take the strain...

**DON'T** worry if you're in Spalding town centre and you have decided you would like to visit Springfields Gardens - getting there is easy on the shuttle service.

A bus will be ferrying passengers to Springfields Gardens and back again all day Saturday, May 6, Sunday, May 7 and Monday, May 8 for 50p each journey.

The service, which leaves from the town's bus station in Winfrey Avenue and takes visitors to the gates of Springfields Gardens, will be running continually, except during the parade (approximately 2-5pm on Saturday, May 6).

## Have a terrific day!

ONCE again I have the pleasure of welcoming you to Spalding Flower Parade.

This one is the 37th and the one with the greatest number of changes. The two major differences are to the route which the parade takes and the point the floats start and finish at, which is Springfields Gardens, where they will be on display for the remainder of the week.

This year the shopping complex development taking place in the Cattle Market area of the town made the use of the Sir Halley Stewart field, which we have used for many years for our float display, unsuitable, as the parking and access would have been very poor.

I am sure when you see the floats displayed at Springfields Gardens you will agree this is a much more suitable site for them.

The single entrance fee is also a saving for people who have in the past paid to enter both



● LEFT: Brian Drury ensuring everything runs smoothly on parade day.

the Sir Halley Stewart field and Springfields Gardens.

Our new route was designed to take maximum advantage of the new Spalding bypass but, as I write this message in late January, there is a strong possibility that it will not be open by the parade date.

We were told in May last year that it would be in use early in 1995. I can only hope that at least some parts can be used.

I shall lead the parade out of Springfields Gardens at 2pm, returning about 5pm.

My committee try to cover every eventuality, but the most important one of all - the weather - we have to leave to someone else! Let's hope for a lovely, warm, sunny day when the floats look better and we all feel better. See you on May 6.

Brian Drury

# Rory Underwood

*found his dream home  
with Broadgate...*



*...you can  
too!*

**Broadgate  
Homes**



*Broadgate Homes are currently  
building quality houses and bungalows  
in towns and villages  
throughout Lincolnshire.*

*Our award winning range of property  
takes in 3, 4 and 5 bedroom houses  
and 2 and 3 bedroom bungalows from  
**£46,500 - £134,950.***

For further details please contact our  
Spalding Showhome and Sales Centre  
open daily 10.30am - 5pm.

**Telephone:**  
**01775 711637**  
or

**Telephone:**  
**01406 425223**

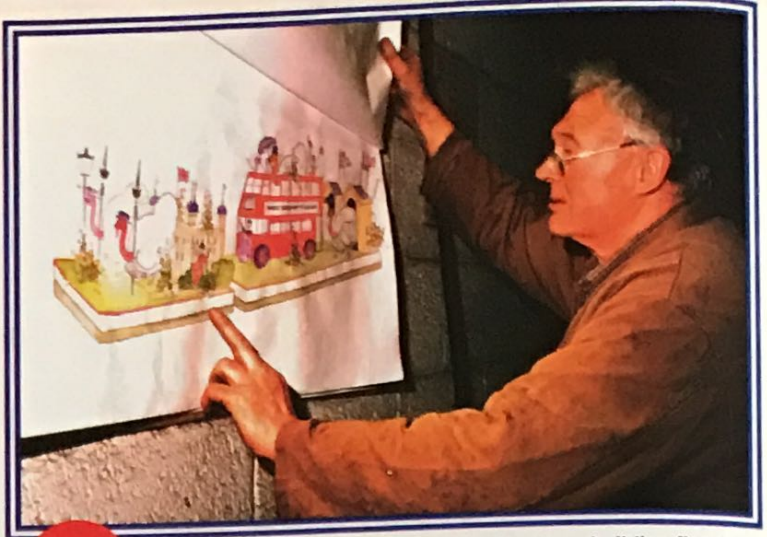


**FREEPOST PE253**

Broadgate House, Weston Hills,  
Spalding, Lincolnshire, PE12 6BR

*Telephone: 01406 380532*

# So how's it done?

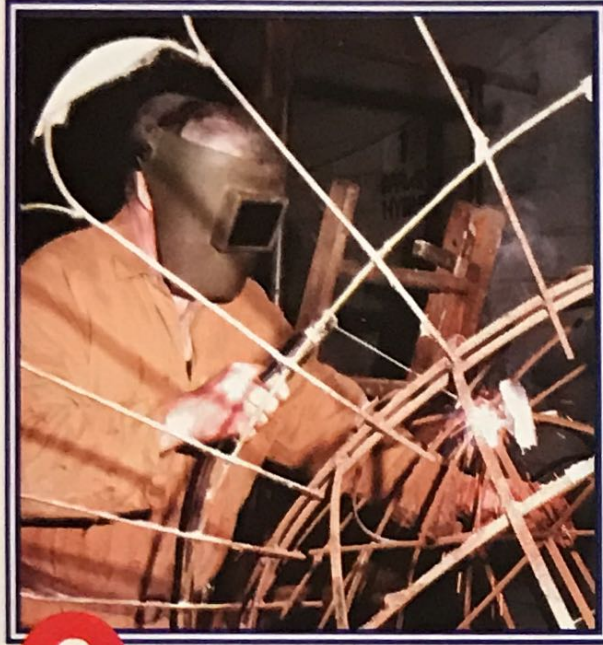


1

**BLACKSMITH** Geoff Dodd, who has been building floats for 35 years, translates the approved designs into working drawings. (JC367/36)

**I**T ALL begins on a drawing board in Australia of all places!  
Kees Van Driel, like his father before him, designs floats in his Australian home that will match both the theme of the parade - this year's is World of Books - and the float sponsor.

Then blacksmith Geoff Dodd, who has been building floats for 35 years, translates the approved designs into working drawings. (JC367/36)



2

**GEOFF** starts creating parts of the float before the whole thing is welded together. It takes 13 to 14 miles of steel to make the floats for a big parade. (JC367/15A)

**FINALLY**, millions of flower heads are pinned onto the floats by an army of willing workers. Among them are Sheila Banham (64) (right) and Gladys Shaw (77) who have been decorating the floats for over 20 years through their connection with Wainfleet NFU.

Sheila says decorating the floats "gets under your skin".

The pair estimate it takes 1,000 tulip heads for each square yard and that they can decorate two square yards in about two hours.

Both look forward to the job, meeting the same people each year and the lovely, friendly atmosphere. (KC1291/8)

3

THE floats are then covered by polyethylene foam by Mick Pratt. It takes more than 2,000 metres of foam and at least a hundred gallons of glue! (JC367/17A)



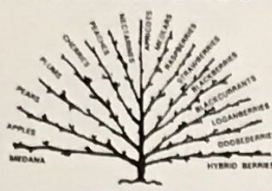
4



## One parade equals 13 miles of steel

**R CEDMONDSON  
(SPALDING) LTD**  
  
 Rent-a-Car  
**CAR HIRE**  
 BETTER RENT FORD  
 TELEPHONE  
**01775 767651**  
 3100MMQ

**NATIONAL  
FRUIT TREES  
AND BUSHES**



GROWN BY  
**Deacons Nursery**  
 SFP DEPT. GODSHILL,  
 ISLE OF WIGHT PO38 3HW.  
 Tel: (01983) 840750 or (01983) 522243  
 Free catalogue available for 95/96 (stamp  
 appreciated). 5m1575

## BEAN'S BOAT TRIPS

to see the  
*Seals*  
 and Blakeney Point



*Blakeney Point was the first nature reserve in Norfolk and is home to both Common Seals and Grey Seals. It also contains a wealth of bird life including Terns, Oyster Catchers, Plovers and Redshank*

**From Morston and Blakeney Quays**  
 For booking information and timetables contact:

### **JOHN BEAN BOAT TRIPS**

12 The Street, Morston, Holt, Norfolk NR25 7AA  
 Tel: (01263) 740038

### **GRAHAM BEAN BOAT TRIPS**

69 Morston Road, Blakeney, Holt, Norfolk NR25 7BD  
 Tel: (01263) 740505

*It's best to book in advance.*

*Special parties catered for. School and other parties catered for*

6s4396

*Kay's of Grimsby*



**FRESH NORTH SEA FISH,  
SMOKED FISH & GAME DEALERS**

**For quality and friendly  
service**

**7 HERRING LANE  
SPALDING**



Tel: SPALDING (01775) 712397

5v4532 ©WVN

## QUALITY CONSTRUCTION THROUGHOUT THE AREA.

For All Your Construction Needs Or A  
 Brochure Detailing New Homes For  
 Sale, Contact us at:-

**30 Park Road, HOLBEACH,  
Lincs.**

**PE12 7EE**

**Tel: 01406 423805**

**Fax: 01406 426900**



**D.BROWN**

(Building Contractors) Ltd



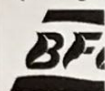
Registered House Builder

# THE **BIG** COMPANY WITH THE **LOCAL** SERVICE



11 Station Street, Donington. Tel: Spalding 01775 820403  
and

Spalding Road, Deeping St James. Tel: Market Deeping 01778 343591



Offices also at Spalding and Boston  
**THE UK'S LARGEST DISTRIBUTOR**  
OF COAL AND OIL

Also suppliers of horticultural products



## BRANSBY Home of Rest for Horses

(Registered under the Charities Act No 501156)  
Bransby, Saxilby, Lincoln LN1 2PH.  
(01427) 788464



Come to Bransby and see over 200 horses, ponies and donkeys which we have rescued. The children will enjoy seeing the goats and chickens too.

There is a gift shop, a picnic area, ample parking and entry is free every day. (Refreshments are available if prior notice is given). 5m1575

We also hold **GALA OPEN DAYS**  
— so please ring for details.

## SPALDING PHOTO SERVICES

FOR THE BEST 1  
& 4 HOUR  
PROCESSING  
10 FRANCIS ST,  
SPALDING.  
Tel: (01775)  
725188  
2m9616



Keyboards,  
Midi, Guitars,  
Drums and  
Amplification

**THE MODERN MUSIC STORE**

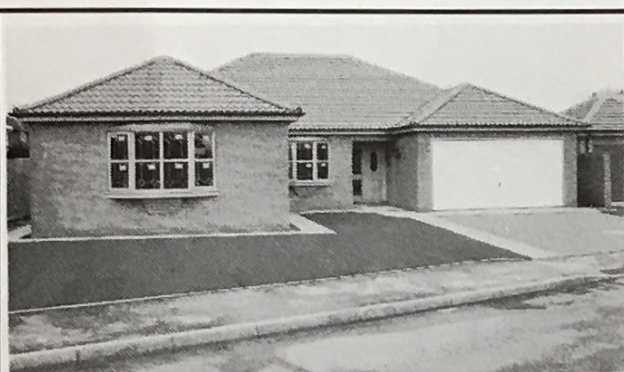
603 Lincoln Road,

Peterborough PE1 3HA

Telephone 01733 52357.

Fax: 01733 346518

4s3136



Let us Build you a New Home on your own Plot or on one of ours from the selection we have available . . .  
We invite you to visit our New Development at Moulton, Nr Spalding.

**VIEWING STRICTLY BY APPOINTMENT**

For more information please ring:

**SPALDING (01775) 766816**

8.30am-5.30pm Monday to Friday

**HOLBEACH (01406) 371860**

after hours

## DGM PROPERTIES

*Creators of Beautiful Homes*

4s3136

DGM PROPERTIES,  
43 DOUBLE STREET,  
SPALDING, Lincs PE11 2AA.



Working in  
Partnership to help  
businesses in  
Lincolnshire prosper  
and grow



**LINCOLNSHIRE TEC**



For further  
information contact  
Tina McEwan

01205 358800

7i2830

**WIN book prizes  
with Thomas The Tank Engine**

11

**SPALDING**  
FLOWER PARADE **95**



# Thomas the Tank Engine joins parade in his 50th year

**T**HOMAS the Tank Engine is joining Spalding Flower Parade in his 50th anniversary year!

The parade theme this year is World of Books and Broadgate Builders (Spalding) Ltd is entering a Thomas float in the parade.

Now Broadgate Builders, together with Christine Hanson of Bookmark in The Crescent, Spalding, are offering children the chance to win not only Thomas books, but reference books for older children too.

The competition is divided into two sections:

★ children up to eight who can enter the Thomas colouring competition - DON'T FORGET TO SEND YOUR NAME, ADDRESS AND TELEPHONE NUMBER;

★ children over eight, who should answer the three simple questions.

In the colouring competition, there are

Thomas pop up or 'noisy' books for the first two winners in the three to five age range, and signed copies of Thomas classics for the first two winners in the six to eight age range.

The three winners in the older age group will win The Times Atlas of the World

(£16.99), the Guinness Book of Records (£14.99) and The Top 10 of Everything (£12.99).

Send entries to Jean Hodge, Lincolnshire Free Press, The Crescent, Spalding, Lincolnshire, by Monday, May 22.

## Entry form for children over eight

1) Who is the most published author of all time?

2) Which UK singer has had the most number one hit singles?

3) What is the capital of Taiwan?

Send your entries to Jean Hodge, Flower Parade Competition, Lincolnshire Free Press, Priory House, The Crescent,

Spalding, Lincs PE11 1AB by Monday, May 22.

Name .....

Age.....

Address.....

.....'Phone.....

# REGENT BINGO CLUB

WESTLODE STREET, SPALDING  
Phone 01775 723098

FLOWER FESTIVAL WEEKEND

## SPECIAL AFTERNOON SESSIONS

FRIDAY 5th MAY, SATURDAY 6th MAY,  
SUNDAY 7th MAY and MONDAY 8th MAY

Doors Open 2.30 pm. Eyes Down 4 pm.  
Session ends 5.20 pm.

Plus

NORMAL EVENING SESSIONS:

Doors Open 5.30 pm.  
Eyes Down 7.30 pm (Sunday 7.15 pm).

**SAVE 70p! NO EVENING ADMISSION  
CHARGE IF YOU STAY ON FROM  
AFTERNOON TO EVENING SESSION**

Members and guests only. Each member can bring up to three guests. Membership is free. To become a member, just send or bring this form to the Regent.

Please allow 24 hours from the time we receive your application form until your membership is valid. You must be 18 years or over to play bingo.

I would like to become a member of the Regent Bingo Club and will abide by the rules. I am 18 years of age or over.

Name: Mr/Mrs/Ms.

Christian Name .....

Surname .....

Address .....

.....

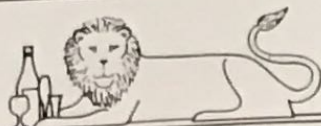
.....Postcode .....

Date .....

Signed .....



5m1574



*The Red Lion Hotel*

Are you a keen gardener looking for ideas or bargains, visiting the beautiful old churches, on business, or just enjoying the uniquely tranquil landscape?

We are pleased to offer you en-suite accommodation with usual facilities, a selection of Home-Cooked Food, a choice of Real Ales, a Warm Welcome and Value for Money.

**Tulip Saturday and Sunday Luncheon,  
11 am-4 pm (approx)**

For details of the Tariff and the Special Breaks available to you, please ring or write to:

## The Red Lion Hotel

Market Place, Spalding  
Lincolnshire PE11 1SU

Telephone (01775) 722869. Fax (01775) 710074

5m1576

# KEY THEATRE Peterborough

*"Home of Good Theatre"*



with a wide range of programmes to  
suit every taste.

Join our mailing list to receive the Key Times, our theatre newspaper, every month. It will give you full details of our current exciting season.

**BOX OFFICE: (01733) 52439**

7/2830

# One-stop, one price festival site

13



- Saturday, May 6
- Sunday, May 7,
- Monday, May 8

**S**PRINGFIELDS Gardens, Spalding, is the ONLY festival site for 1995's flower parade.

In previous years the Sir Halley Stewart Field at the corner of Winfrey Avenue and King's Road, Spalding, has also been used.

But due to town centre redevelopment, the focus has been centred on Springfields in Camelgate, Spalding.

Visitors will now pay only to get into Springfields whereas in previous years some visitors paid to get into both Springfields and the Sir Halley Stewart Field.

The programme of events at Springfields is:

## SATURDAY, May 6

□ 10.30-11am -

Wellingborough Redwell Band entertains around the arena roadways

□ 11.15-11.40am - The Blue Eagles Drum and Bugle Corps Band (also in parade)

□ 11.50-12.20pm - The Mid Wales Axe Racing Team

□ 12.30-12.55pm - Mr Mystery, the man with bionic eyes

□ 1-1.30pm - Wellingborough Redwell Band entertains around the arena roadways

□ 2-5pm - flower parade of floats departs the arena for the annual tour of Spalding, returning at approximately 5pm

□ 3-3.30pm - The Mid Wales Axe Racing Team

□ 3.40-4.25pm - Hypnoworld

□ 4.30-5pm - Wellingborough Redwell Band entertains around the arena roadways

### PLUS:

● Spalding Marching Ambassadors will be performing periodically throughout the day within the gardens; parade floats will assemble in the arena for final preparations between 10am and 2pm prior to the parade. An ideal opportunity for

★ Meet Mr Mystery - the man with bionic eyes

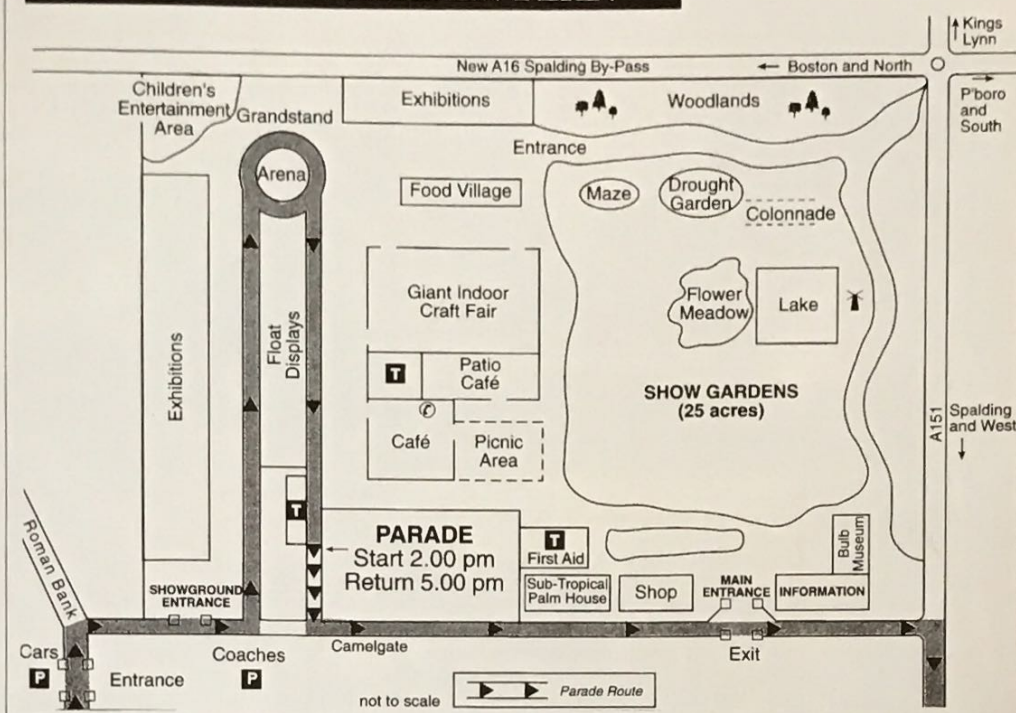
★ See Spalding Flower Parade pass through Springfields

★ Enjoy a giant craft fair

★ Hear bands

★ Watch the battling Cumberland giants show

## SPRINGFIELDS GARDEN PLAN



photographs! Giant craft fair; sponsors' exhibits; trade stands; Punch and Judy shows; Lincolnshire Museum exhibition; children's entertainment; Royal Navy static display; Baytree Owl Centre; RNLI model boat show; licensed restaurant and bar; 25-acre spring show garden

## SUNDAY, May 7

□ 11.15-11.40 - Battling Cumberland giants show

□ 12noon-12.45pm - famous Romsey Old Cadets performing their zany musical marching routine

□ 1.15-1.40pm - Battling Cumberland giants show

□ 2.15-4.30pm - Springfields Annual Marching Band competition

### PLUS:

● Static display of flower floats; giant craft fair; sponsors' exhibits; trade stands; Punch and Judy shows; children's entertainment;

Lincolnshire Museum exhibition; Royal Navy static display; RNLI model boat show; Baytree Owl Centre; Boots, the stilt walking clown; licensed restaurant and bar; 25-acre spring show garden.

## MONDAY, May 8

11.30-12noon - Rangers of Derby marching band

12.15-12.40pm - Battling Cumberland giants show

1-1.30pm - Motorcycle Madmen - one of Britain's top motorcycle teams

2-2.30pm - Rangers of Derby marching band

2.45-3.10pm - Battling Cumberland giants show

3.30-4pm - Motorcycle Madmen - one of Britain's top motorcycle teams

4.30-5pm - Rangers of Derby marching band

**PLUS: TELEVISION PERSONALITY** - to be announced; static display of floats; giant craft fair; trade stands; sponsors' exhibits; Punch and Judy shows; children's entertainment; Lincolnshire Museum exhibition; Royal Navy static display; RNLI model boat show; Baytree Owl Centre; Boots the stilt walking clown; licensed restaurant and bar; 25-acre spring show garden.

● See pages 21, 24, 25, 26 for festival site highlights.

## BEDDING PLANTS

FOR AS LITTLE AS 50p STRIP  
BIZZY LIZZIES — 6 FOR £1.50

Over 35 different varieties of patio and  
basket plants including "Surfinia"

BUY DIRECT FROM THE GROWER

**GLENSIDE NURSERIES LTD**

Glenside South, West Pinchbeck  
Spalding ☎ (01775) 640520

Open 7 days, 10am-5pm

On1887

## LOW PAYMENTS

At £5,998\* on the road, you're  
looking at the Favorit Flairline  
LXiE Skoda that has conquered  
the world -and with the  
repayment deals available on the  
Favorit, now has never been a  
better time to drive one away.

Deposit required. Subject to status. Written  
quotations and conditions available on request.  
\*The Favorit Flairline starts with the LXiE at £5,998  
on the road including all delivery charges, number  
plates, petrol and 6 months road tax. All prices  
correct at time of going to press. UK mainland only.



(With our deals you can spread  
the H.P. as thin as you like).



The new Skoda  
Part of the Volkswagen Group

## Fleet Road Garage

36 Fleet Road, Holbeach. Telephone 01406 422457

VALUE  
FOR  
MONEY

## Allison Homes in Spalding

*The Kingswood*  
from **£63,950**

3 BED DETACHED WITH EN-SUITE  
& SINGLE GARAGE



*The Morland*  
from **£74,950**

4 BED DETACHED WITH EN-SUITE  
& DOUBLE GARAGE

*The Chalfont*  
from **£92,500**

4 BED DETACHED WITH EN-SUITE  
& DOUBLE GARAGE



Allison Homes offer a full range of bungalows and 2,3,4 & 5 bed homes in South  
Lincolnshire, North Cambridgeshire and Norfolk. All Allison Homes include a  
choice of carpets, kitchens and bathrooms with prices from £37,000 to £137,000.

Allison Homes, Swallow House, Dept.FLP, FREEPOST PE1195  
West Elloe Avenue, Spalding, Lincs. PE11 2BR **Tel: 01775 724701**

ALLISON HOMES is a trading name of SWALLOW HOMES LTD.



# Bring on the bands..

15

**S** SPALDING 95  
FLOWER PARADE

## 13th City of Coventry scout group

BRITAIN'S best known scout band, the Thirteenth City of Coventry Scout Group Marching Band, is gaining a following abroad thanks to extensive travelling and foreign tours in Europe.

We're glad they are able to be with us in Spalding for the 37th flower parade!



## German Oompah Band (Die Apfeltizers)

MAKING a return visit to Spalding Flower Parade is the German Oompah Band, or Die Apfeltizers, who will be playing once again on the top of a Michelin bus. The group, which was formed in 1992, has proved popular with

audiences, both at German evenings or when they are providing background music in traditional German style.

Most of the musicians are also members of the Royal British Legion Band in Spalding.

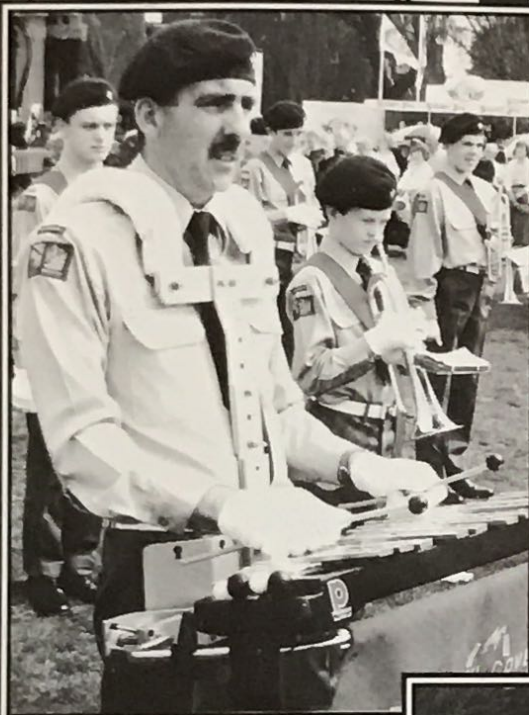
## The Derby Midshipmen Carnival Band

THE French naval dress of the 1800s period is the influence for the uniform worn by the Derby Midshipmen Carnival Band.

The band has entered 24 contests which were run by the Carnival Band Association since 1990, gaining first place in 21 of these contests and second place

in the remaining three.

As well as appearing in Spalding Flower Parade for the first time, the band will be trying to retain their title as champions in the Carnival Band Association contest, which is to be held at Springfields Gardens, Camelgate, Spalding.



### Derby Serenaders Showband

SPALDING Flower Parade visitors have been serenaded by this group since the early 70s!

They are the Derby Serenaders Showband, and they have been on the go since 1936.

Since then it has won more than 350 prizes with its precision marching and excellent repertoire of music.



### Spalding Grammar School Big Band

SPALDING Grammar School Big Band - better known as SGS Big Band - will be belting out music from the float entered in Spalding Flower Parade by Lincolnshire

Training and Enterprise Council.

It's made up of members of the school's larger Concert Band, and is based upon the traditional big band line-up.

During its four-year existence, SGS Big Band has built up both a large and varied repertoire and a popular reputation, performing at concerts and providing entertainment for local dances.

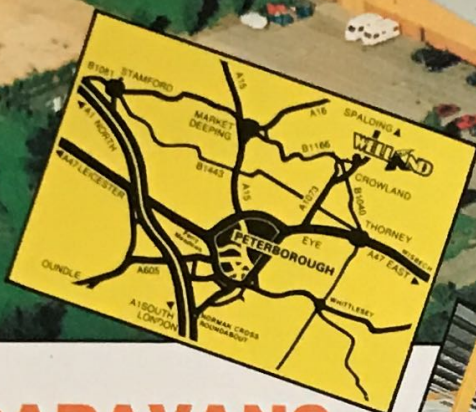
Together with the SGS Concert Band it has recently released a professional recording entitled 'Take Two'.

In the summer both bands will undertake their sixth continental tour which this year will be based in Annecy, in the Savoie region of France.



VISIT YOUR FRIENDLY EXPERTS . . .

# WELLND



**THE ONLY ALL YEAR ROUND  
CARAVAN AND CAMPING  
EXHIBITION.  
SUPERB SHOWROOM IN A  
RELAXED COUNTRY SETTING.**

## CARAVANS

OVER 60 CARAVANS ON DISPLAY  
INSIDE AND VAST SELECTION OF  
NEW & USED CARAVANS OUTSIDE.

PRICES RANGING FROM BARGAIN  
BASEMENT TO LUXURY ON WHEELS.

ABBEY · SWIFT · SPRITE · BAILEY  
COMPASS · AVONDALE & LUNAR



## AWNINGS

ALWAYS AT LEAST 80 AWNINGS  
& PORCHES ON DISPLAY

THE MOST COMPREHENSIVE DISPLAY  
OF TOP QUALITY AWNINGS & PORCHES TO BE FOUND ANYWHERE:-  
CHOOSE FROM OUR EXTENSIVE RANGE OF STOCK:- PRIOR YEARS ALWAYS AVAILABLE.

ISABELLA · TRIO · OBI · HARRISON · NR COMPONENTS · SALOU · APACHE



## CAMPING

PERMANENT ALL YEAR ROUND  
DISPLAY OF FRAME, RIDGE,  
DOME & TRAILER TENTS.  
EVERYTHING FOR THE FAMILY  
CAMPER.

HIRE SERVICE.  
DISPLAY OF USED TENTS DURING  
THE SUMMER SEASON.

## SERVICE AND ★★★★★ REPAIR

FIVE STAR NCC RATED WORKSHOP  
FULL SERVICE & REPAIR FACILITIES  
ALL INSURANCE WORK UNDERTAKEN  
CARVER · ALKO · THETFORD SERVICE  
CENTRE:-  
AWNING & TENT REPAIR WORKSHOP  
WITH FACTORY TRAINED STAFF.

## SHOP

FULLY STOCKED  
ACCESSORY SUPER-  
MARKET:-  
EVERYTHING FOR  
THE CARAVANNER &  
CAMPER.

## RAPID MAIL ORDER SERVICE:-

FREE DELIVERY MAINLAND UK  
NO DELAY - OFF TODAY . . .



**0733 210560**

OPEN DAILY 10.00 a.m. to 5.00 p.m. — BEST DISPLAY IN THE U.K.  
OVERNIGHT STAY NO PROBLEM — TELEPHONE FOR DETAILS

WELLAND HOLIDAY HIRE & SALES CENTRE LTD., POSTLAND ROAD, CROWLAND, PETERBOROUGH, PE6 0JB.

# Bloomin' lovely!

**L**OOKING every bit as beautiful as the flower-covered floats are South Holland Flower Queen Tracey Markham, her deputy Rachael Murray and Miss Spalding Guardian Amanda Smith.

The three beauties were crowned in Spalding in February and will spend the year visiting hospitals and old people's homes, opening fetes and galas and being generally in demand by the community!

However Spalding Flower Parade is the highlight of their year, when Tracey and Rachael will ride aloft on South Holland Council's float and Amanda can be seen in an open topped car.

## FLOWER QUEEN

TRACEY (20) lives in Spalding with her parents and is a trainee personnel assistant.

She enjoys swimming, aerobics, reading, socialising and is studying psychology and business

administration to improve her promotion prospects. At six feet tall, brown haired and brown eyed Tracey will never go unnoticed!

## DEPUTY FLOWER QUEEN

RACHAEL (18), lives in Spalding with her parents - her father is Jim Murray of country

● FROM LEFT: Miss Spalding Guardian Amanda Smith, Flower Queen Tracey Markham and Deputy Flower Queen Rachael Murray. (LC357/1)



and Irish group Jimmy Murray and Shamrock.

She is due to finish business and finance studies soon.

Then she will decide between seeking a job in travel and tourism or continuing her studies.

Petite Rachael - she is just five feet two inches, with blonde hair and blue eyes - gained modelling experience in southern California some years ago, and would like to return there one day.

## MISS SPALDING GUARDIAN

AMANDA (24) lives with her boyfriend in Spalding and is a catering auxiliary at a local nursing home.

Auburn haired, blue/green eyed Amanda is fond of drawing, reading, astrology, cooking and looking after her pets.

**At six feet tall, Tracey will never go unnoticed**



▲ SOUTH HOLLAND Flower Queen, Tracey Markham. (LC361/21)

## She handles pythons!

PYTHON handler Sandra Neves is the beautiful Miss Jersey Battle of Flowers who will be joining Spalding Flower Parade this year.

In fact Sandra (23) is manageress of a butterfly centre in one of the parishes of Jersey, and handling pythons and tarantulas is part of her routine!

Sandra was born in Lisbon, has lived in Jersey for ten years and speaks French, Portuguese and English fluently.

This will be one of the last events of the year for Sandra, whose ambition it is to join the police force.

● RIGHT: Beautiful Miss Jersey Battle of Flowers, Sandra Neves.



## Miss Spalding Guardian is a member of the Caring Team



### Gosberton House Nursing Home

A large Georgian  
House set in its own  
grounds in the heart  
of the  
attractive village  
of Gosberton

Our unrivalled team of professional staff offer  
friendship, care & comfort for a happy  
retirement

Please contact Matron  
Enid Rance

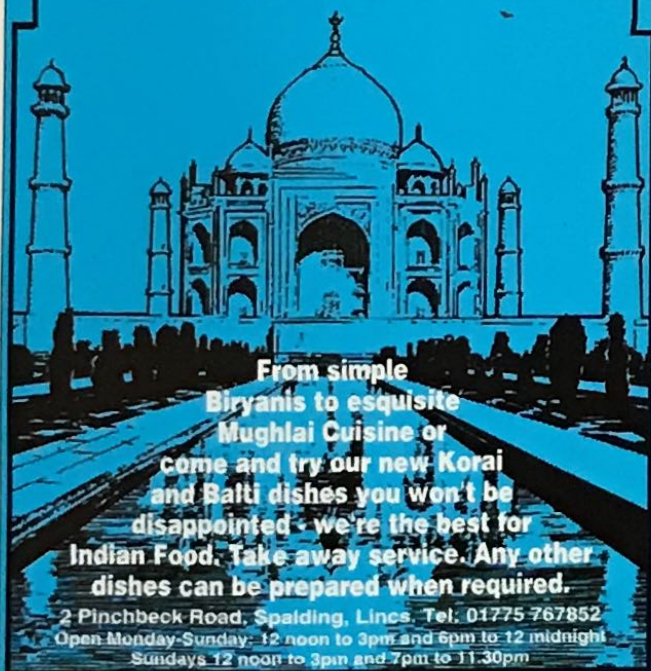
TEL: 01775 840581

WESTHORPE ROAD,  
GOGBERTON, Lincs

## SHAHEEN

### TANDOORI RESTAURANT

Fully Licensed



From simple  
Biryani to exquisite  
Mughlai Cuisine or  
come and try our new Korai  
and Balti dishes you won't be  
disappointed - we're the best for  
Indian Food. Take away service. Any other  
dishes can be prepared when required.

2 Pinchbeck Road, Spalding, Lincs. Tel: 01775 767852  
Open Monday-Sunday: 12 noon to 3pm and 6pm to 12 midnight  
Sundays 12 noon to 3pm and 7pm to 11.30pm



**TESCO**

We are delighted to be  
associated  
with the  
Spalding Flower  
Parade.

For quality, value and  
service visit your  
local Tesco store:



Hall Place  
SPALDING

High Street  
STAMFORD

Hereward Centre  
PETERBOROUGH

Cromwell Road  
WISBECH

Hardwick Road  
KINGS LYNN

New Hammond Beck Road  
BOSTON

**Don't** **Miss** **TESCO**

**FAMILY FUNDAY**

**AT**

**SPRINGFIELDS  
GARDENS**

Spalding Lincolnshire  
**ON SUNDAY 9th  
JULY, 1995**

For further information of  
this event contact:

**Brian Willoughby,  
Springfields, Camelgate,  
Spalding, Lincs**

**PE12 6ET**

**Tel: (01775) 724843**



**£1500**  
**INSTANT**  
**CREDIT**  
 SUBJECT TO STATUS

**COME IN AND  
 BROWSE AROUND**

**INSTANT  
 FREE  
 DELIVERY**

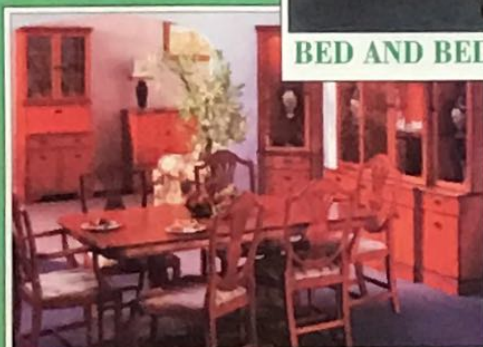
*You'll be spoilt for choice, we are one of the largest independent furniture stores in the area*



**LOUNGE FURNITURE**



**BED AND BEDROOM FURNITURE**



**DINING ROOM FURNITURE**

**WE STOCK  
 MOST BRAND  
 LEADERS**

**CAXTON  
 ALSTONS  
 CHARMWOOD  
 SILENTNIGHT  
 CUMFILUX  
 DICO  
 BYMACKS  
 T+L FURNITURE  
 KELVIN FURNITURE  
 NEW PLAN**

*The home of affordable furniture*

**WE'RE NEVER BEATEN ON PRICE EVER**

**OPENING HOURS: 9 am-5 pm daily. OPEN SUNDAY 1.30-4.30**

**THE FURNITURE  
 COMPANY**

**ELSOM HOUSE, BROAD STREET, SPALDING**

**TEL: 01775 713707**

Opposite Broad Street Car Park. Licensed Credit Brokers. Written details on request

# What's on? at festival site

21

**SPALDING**  
FLOWER PARADE **95**

**T**HE FUN begins here! Springfields Gardens has no end of entertainment on offer - from mad cap band members of the Romsey Old Cadets, to marching bands, wrestling giants, motorcycle madmen and much, much more.

Then, of course, there are the fabulous, flower covered floats, positioned in the gardens when they are not on parade where visitors have the chance to linger over every perfect detail.

And we must not forget the glorious Springfields Gardens

themselves - acre upon acre of gardens of every variety.

You'll find a palm house in Springfields Gardens - and you'll also find a drought garden designed by well known gardening broadcaster Daphne Ledward!

An innovation in the gardens this spring is a magnificent trial bed of tulips of over 50 varieties, which have been planted in flowering order from early April to late May.

Take time to enjoy all that Springfields Gardens has to offer.

● Entry is £5 on Saturday, Sunday and Monday, accompanied children free.

● Saturday, May 6  
● Sunday, May 7  
● Monday, May 8



## Viking visitors

THE ever popular Romsey Old Cadets entertained last year's visitors as Vikings!

Wearing long blond wigs, black woolly boots, long robes and horned helmets the ferocious Vikings succeeded only in capturing the hearts of the crowds!



● SPALDING and District Model Club members Geoff Cromack (left) and Dave Moss (also an RNLI committee member), giving a display of radio-controlled model boats.



## Gracie's a star!

MEET Gracie, the star of what is claimed to be one of Britain's largest and most varied collections of owls from around the world!

She lives at the Owl Centre, based at the award winning Baytree Nurseries at Weston (ten-minute drive from Spalding).

The Owl Centre will be bringing a collection of their birds to display at Springfields Gardens - and possibly some of their new

birds for 1995 which include Grass Owls, Marsh Owls and a Wahlberg's Eagle.

Visit the Owl Centre at Baytree at flying times (11am and 3pm) - or hold an owl for a photograph!

● BAYTREE NURSERIES is staging 16 days of events throughout South Holland Spring Festival, with ten to 12 different events on many days.

See pages 27-37 for full details.

## Real lifeboat rescues

VISITORS could be seeing some real live lifeboat rescues in Springfields Gardens!

Spalding and District Branch of the RNLI (Royal National Lifeboat Institution) will be putting on a spectacular display - in the lake in Springfields Gardens.

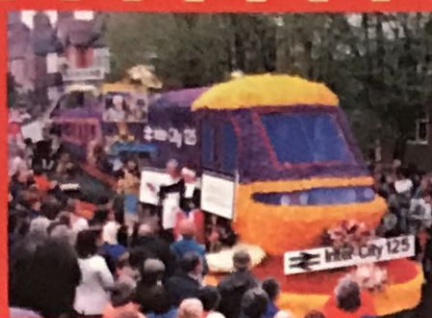
There will also be a souvenir stall, raffle for a Volvo car and the RNLI's travelling

display unit. Money raised will go to the Humber Lifeboat Appeal.

The branch has supplied grandstands for 240 visitors to have an outstanding view of the parade at Springfields arena.

Bookings are already being taken for 1996!

**More festival entertainment,  
pages 13, 24, 25, 26**



**COLOUR PHOTOGRAPHS £5.95 for 20**

(6"X4")

**POST  
FREE**

INCLUDES ALL FLOATS IN 1995 FLOWER PARADE

**ORDER FORM 1995** (Telephone orders accepted with credit cards)

**To: SPRING COLOUR PUBLICATIONS**

## SPRINGFIELD

**SPALDING, Lincs, PE12 6ET**

Telephone (01775) 724411

Please send me the following:

**FLOWER PARADE** (all items post free)

\_\_\_ Sets E16 - **1995 PARADE** - 20 Photographs (6"x4")..... **\$5.95**

— Seta E15 - <b>1994 PARADE</b> - 20 Photographs (6"x4")	<b>£5.95</b>
--	--------------

— Sets FFP - <b>PAST FAMOUS FLOATS</b> - 20 Photographs (6"x4")	<b>\$5.95</b>
---	---------------

— Sets FFS - <b>PAST FAMOUS FLOATS</b> - 12 Colour Slides (35mm)	£4.25
--	-------

**VIDEOS** (price includes £1 for postage/packing) VHS

— Video - **"England's Floral County"** as seen on TV ..... £12.99

Video - "Images of Lincolnshire" (NEW)	£13.99
--	--------

**SPECIAL OFFER** any 2 or more items deduct £1 per item

**TOTAL** - Cheque/p.o. enclosed (or credit card details opposite)

From: Name

Address

County

Postcode

Available for dispatch within 3 weeks  
of Parade date

**ALL GOODS SOLD UNDER OUR  
GUARANTEE OF SATISFACTION  
OR MONEY REFUNDED**

or pay by **ACCESS/VISA** by quoting details here

Card expiry date

Signature

**SALES LIMITED**

**SALES LIMITED**  
**E4Four**



## WHOLESALE FLORISTS

**LONDON'S PREMIER FLOWER  
WHOLESALE SPECIALISTS IN TOP  
QUALITY CUT FLOWERS FROM  
AROUND THE WORLD**

We acknowledge our long-standing business association with many local growers. We are especially pleased to be connected with the Spalding Flower Festival & Parade as sponsors of one of the decorated floral floats.

**242-245 FLOWER MARKET, NEW  
COVENT GARDEN,  
LONDON SW8 5NA**

**Telephone 0171 627 5222.**

**Fax 0171 622 8261**



# ASHWOOD HOMES

have all the right homes....

**THE DELAMERE**



**£44,500**

3 BEDROOM SEMI  
DETACHED HOUSE

**THE HALLAM**



**£56,500**

3 BEDROOM DETACHED  
HOUSE

**THE KENSINGTON 'S'**



**£76,500**

4 BEDROOM DETACHED  
HOUSE

**THE SALISBURY**



**£46,500**

2 BEDROOM DETACHED  
BUNGALOW

**THE BERKSHIRE**



**£52,500**

3 BEDROOM DETACHED  
BUNGALOW

**THE KINGSWOOD**



**£79,500**

3 BEDROOM DETACHED BUNGALOW  
WITH DOUBLE GARAGE

....in all the right places....

**SPALDING - BOSTON - WHAPLODE**

....at all the right prices!

Prices range from **£44,500** to **£119,500**

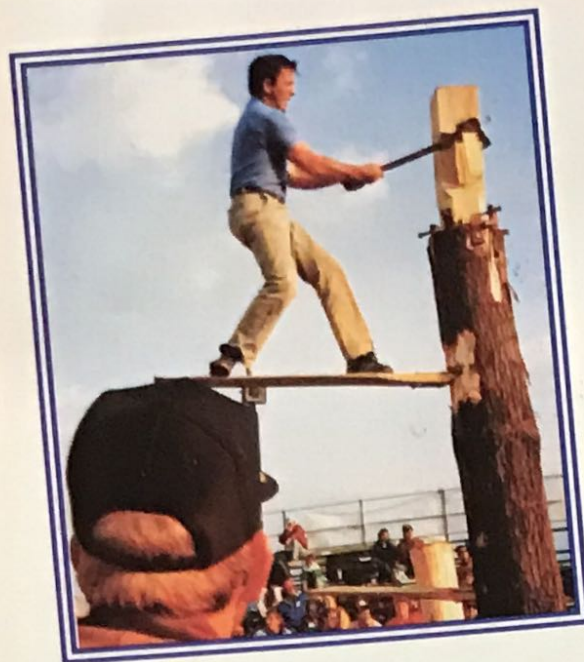
For more information & brochure of our  
properties in various locations please  
contact:-

Ashwood Homes, Holbeach Manor,  
Fleet Road, Holbeach,  
Lincs. PE12 7AX. Tel: (01406) 423388

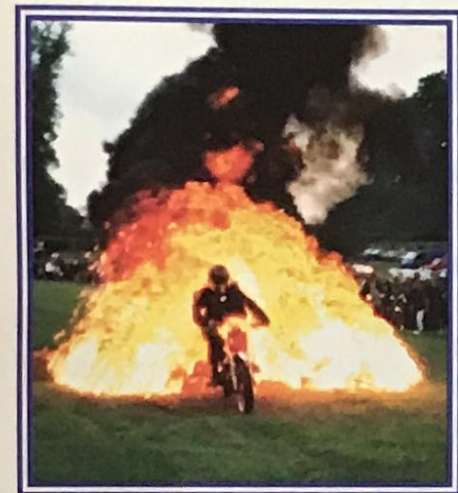


Full timetable page 13.

More festival events, pages 21 and 22



● THE Mid-Wales Axe Racing Team



● SPECTACULAR stunt team, the Motorcycle Madmen

**T**HERE'S fun for all at Springfield Gardens, Spalding, on Saturday, May 6, Sunday, May 7 and Monday, May 8.

Some of the highlights are:

● THE Mid-Wales Axe Racing Team will be thrilling the crowds with an exciting display!

Razor sharp axes will be coming within centimetres of the axemen's feet as they exhibit their skills in what has grown into a very competitive and popular sport worldwide.

Trees will be falling, chainsaws will be racing against the axe and the display will include the use of chainsaws to cut small articles which are presented to individuals in the crowd.

● EUROPE'S most spectacular stunt team, the Motorcycle Madmen, are not to be missed!

The five man team promise a first class show performing a trailing ramp leap, an agile mobile ladder climb, a palpitating car jump and other equally daring and dangerous stunts.

● A NEW band both to Springfield Gardens and to Spalding Flower Parade is The Blue Eagles, or the Havering and Basildon Drum and Bugle Corps as they are properly called.

Originally founded in 1962 as a youth marching band by an ex-member of the Kings Troop, Royal Horse Artillery, the band has grown

to about 45 in strength and has toured competing in world championships in the UK. You may also have seen them on Blue Peter - they have appeared on the programme at least three times!

● A HOME-GROWN band - Spalding Ambassadors, made up of youngsters from Spalding Girls' Brigade and 3rd Spalding Brigade of the United Reformed Church, Spalding.

● THE act described as "one of the most amazing, mind baffling and entertaining attractions available today" will be Mr Mystery, or the man with the eyes, drives a car around a course of human obstacles - while blindfolded!

Mr Mystery will be offering a £1,000 reward to anyone who can prove the drive is accomplished using a radio, electronic bugging or a mechanical device.

● THE WESTERN-style band of Derby Carnival Band is popular with young and old alike, their lively music which ranges from pop to country and western.

Originally formed in 1966 and disbanded in 1966 and again in 1970. Look out for their black and red western uniform as they play out for the crowds!

● SPRINGFIELDS Gardens - a celebration of nature, of colour and beauty and of the

**Mystery  
TV  
personality  
to  
entertain**



● THE RANGERS of Derby Carnival Band



● THE BLUE EAGLES, or the Havering and Basildon Drum and Bugle Corps as they are properly called.

# festival site?

25

**SPALDING**  
FLOWER PARADE **95**

26

and the USA,  
in Kansas.  
television on  
e

ing Marching  
from 1st  
ing Boys'  
ch,

most  
ing arena  
ystifying  
"bionic  
and a series  
hile

ffering a  
ne who can  
mplished by  
ing or any

le Rangers  
will be  
old with  
n varies  
d western.  
1953, they  
reformed  
k, white  
their hearts

ration of  
he hard  
k that goes  
the  
ticultural  
ustry in  
th Holland.  
Springfields is  
ue with its  
re show  
en  
laying  
ers, trees  
shrubs  
April to  
ember  
nt a  
drop of  
scaped  
lands,  
s, lake and  
garden.

ngtime,  
ngfields  
ens is a



● **SPRINGFIELDS GARDENS** - a 25-acre show garden. You can also see the fabulous flower covered floats there (when they are not on parade) during the festival weekend.

mass of tulips, daffodils, hyacinths and spring bedding. Together with flowering trees and shrubs, the displays are clearly labelled to enable visitors to identify varieties for their own gardens.

Return in the summer to enjoy roses and summer bedding.

● **TWELVE** feet high giants can be seen battling it out in comedy wrestling matches!

The Battling Cumberland Giants show - created by Jules Baker, who is better known as Boots the Clown who is also performing in Springfields Gardens - includes a match between Mighty Mick versus Terrible Ted.

This promises to be non-stop great family entertainment!

● **A MYSTERY**

TV personality will also be entertaining the crowds in Springfields Gardens over the holiday weekend!



● **TAKE** your ringside seats for the Battling Cumberland Giants show. Twelve foot high giants and crazy clowns in an action-packed comedy wrestling match.

● **Saturday, May 6**  
● **Sunday, May 7**  
● **Monday, May 8**

● **BELOW:** Spalding Marching Ambassadors - made up of youngsters from 1st Spalding Girls' Brigade and 3rd Spalding Boys' Brigade of the United Reformed Church, Spalding.





## Favourite with the crowds

WELLINGBOROUGH Redwell Band (pictured above) are another favourite with the crowds, with their colourful military-style uniform. They also have their own

original style of intricate marching and counter-marching.

The band, which recently celebrated its 40th anniversary, retained their league title for the third year running last year.

Full festival site programme - page 13.

More events featured on pages 21, 24, 25

# Triumph at Tulip Time

IT'S the warm welcome visitors receive at Moulton Parish Church that they particularly appreciate.

But, once inside, the sheer beauty of the church decorated in a mass of flowers for the annual church flower festival makes sure they return year after year.

The church is normally ablaze with colourful flowers about a week before the Spalding Flower Parade, and the church festival usually lasts about ten days.

A small committee does the organising, but a large army of volunteer flower arrangers does the hard work.

That effort and dedication has this year earned the church the Worshipful Company of Gardeners' Trophy.

Awarded every year since 1956, the trophy is presented in recognition of "an outstanding contribution to Tulip Time".

The Master of the Worshipful Company of Gardeners will present the trophy at a civic lunch at Spalding's South Holland Centre on parade day.

Flower arrangers usually work to a theme, depending on fundraising and generous contributions to cover the cost of the flowers - which can run to hundreds of pounds.

One committee member said: "We get hundreds of visitors and they love the

country atmosphere and the welcome.

"The warm welcome is as important as the flowers.

"The congregation and other members of the village pop in on a rota basis to steward the church."

Apart from the natural attraction of the lovely, country church, visitors enjoy teas and meals served by arrangement in the village hall across the green and Harrox House, which is also across the road from the church, serves teas in the garden on fine days for church funds.

### ● IN THE PICTURE:

Beautiful Moulton Church: vicar of Moulton, the Rev Colin Fowler and flower festival committee members (back row, from left) Chris Jackson, June Moon;



(centre) Chris Fuller; (front) Doris Barker, Mary Lane, Rene Hemmant.

(LC213/20)

# 16 days of entertainment

27

**SOUTH HOLLAND 95**  
SPRING FESTIVAL

**S**OUTH HOLLAND Spring Festival is a series of events designed to entertain and involve visitors and residents. The Spring Festival's unique centrepiece is the Internationally renowned Spalding Flower

**Saturday, April 29 - Sunday, May 14, 1995**

Parade which this year celebrates its 37th year and brings with it several new innovations including a new

single site format for the float displays, trade and exhibition stands and the glorious colour of the gardens at Springfields.

The parade will also follow a new route with a new start time of 2pm.

Around this centrepiece, South Holland Spring Festival Association - an organisation to co-ordinate and promote events staged by many groups and organisations - has put together an exciting programme of events and has built upon the success of previous festivals.

The festival will this year for the first time

incorporate events from the South Holland Arts Festival and these events, which include a specially commissioned choral project - featuring over 200 voices and the Lincolnshire Youth Symphony Orchestra, musical and variety shows, a ballet and much much more - are all new for 1995.

We hope you will enjoy the Festival - we hope you will join in and encourage others to do the same - welcome to South Holland - welcome to the Spalding Flower Parade - welcome to the 1995 South Holland Spring Festival.

*Anthony Howling*  
CHAIRMAN

● If you require further information on any entertainment activity, please contact - South Holland District Council, Tourist Information Office, Ayscoughsee Hall, Church Gate, Spalding, 01775 725468.

● If you wish to become involved in the festival, have a suggestion for next year or would like to promote your business or organisation please contact Anthony Howling, South Holland Spring Festival Association, c/o 13 Crown Drive, Spalding (01775 760284).



● **LAST minute planning meeting:** back - South Holland arts officer Nigel Hawkins, the Rev Andrew Hawes (words), Eric Wayman (Cantemus and special choir), composer Patrick Hawes; front - John Tilling (South Holland Singers), South Holland marketing officer Jo Wilson, Nicholas Pitts (Spalding Parish Church Choir). (LC378)

## South Holland and its people celebrated

SOUTH Holland and its people are to be celebrated in song in the largest amateur arts event the district has seen.

Over 200 voices will raise in song, accompanied by a 70 piece orchestra, in a spectacular launch to this year's South Holland Arts Festival - part of South Holland Spring Festival, which draws together a series of events to entertain and involve visitors and residents.

A special choir - South Holland Choral Project - has come together to perform The Land at the 'Cathedral of the Fens', St Mary Magdalene Church, Gedney, on Saturday and Sunday, April 29 and 30 (7.30pm on Saturday, 3pm Sunday).

The voices are made up of singers from four choirs - Cantemus, South Holland Singers, South Lincs United

Chorale and Spalding Parish Church choir - and singers who are not members of those choirs have made up a fifth group.

They will be accompanied by Lincolnshire Youth Symphony Orchestra.

They will perform The Land, a four movement work featuring the seasons, written and composed by vicar of Edenham the Rev Andrew Hawes and his brother Patrick.

South Holland arts officer Nigel Hawkins said: "It will be a unique occasion and will be the biggest community arts project completed in South Holland to date."

The project is backed by South Holland Council and Lincolnshire County Council and Eastern Arts Board.

To reserve seats or for further details contact the South Holland Centre box office (01755) 725031.

**FREE GLASS**



**WITH EVERY CONSERVATORY PLUS 18 MONTHS' INTEREST FREE CREDIT**

(Minimum 15% deposit, subject to status, details on request)



**FREE SITE VISIT  
FREE SURVEY  
FREE QUOTE**

When you add a conservatory to your home you get **more** than looks.

Every product from Fersina comes to you as a combined result of many years of proven development where quality counts.



Phone **Fersina** Lincolnshire

**on 01775 712532**

in Fersina white, ivory, woodgrain PVCu  
So out with the old, in with the new PVCu for 1995  
Phone now for your free quotation  
Branches around Lincolnshire



2013M

LINCOLN 439 HIGH STREET 01522 533020	SPALDING 8 ABBEY PASSAGE 01775 712532	BOSTON 51 WEST STREET 01205 355161	GRANTHAM UNIT 3 DYSART ROAD 01476 64603
--	---	--	--

# SOUTH HOLLAND SPRING FESTIVAL 95

28

**SATURDAY, APRIL 29**

## WELCOME TO THE FESTIVAL

A peel of bells will ring out from churches and chapels from around South Holland to welcome visitors and residents to the 1995 Spring Festival.

## CHURCH FLOWER FESTIVALS

Decorated church flower festivals open today: Spalding Parish Church of St Mary and St Nicolas; Spalding United Reformed Church; St Mary and the Holy Rood, Donington; Fleet Parish Church; St Peter and St Paul, Gosberton; Holbeach Parish Church; Holbeach Methodist Church; St Mary's Parish Church, Long Sutton; Moulton Parish Church; Moulton Chapel Church and Chapel. More details on page 36.

## FLOWER FESTIVAL/CHURCH COACH TOUR

A guided tour of some of the decorated churches of South Holland by coach. For further details and to book please contact South Holland Tourist Information on 01775 725468.

## BOLD/BBS TULIP TANDEM MARATHON

Blind and sighted cyclists partner each other in this 26 mile 385 yard 14th annual tandem ride. Entries are expected from around the world. Starting at Baytree Nurseries, Weston at 11.30am and travelling around the South Holland district returning to Baytree Nurseries mid afternoon.

## FESTIVAL STREET ANIMALS

Colourful characters, all decorated with flowers and produced by volunteers, will be on show around Spalding to welcome the 1995 Festival.

## ART EXHIBITION - RIVERBANK STUDIOS, SPALDING

Helen Webber and John Gray, both well known local artists and tutors, will feature a special exhibition of works during the festival period in the Riverbank Studios Gallery, Double Street, Spalding. Admission free.

## SPRINGFIELDS GARDENS

Home of the British Bulb industry, Springfields Gardens in Camelgate is a mass of tulips, daffodils, hyacinths and spring bedding. Together with flowering trees, shrubs, woodland walks and lakes this 25 acre show garden has much to offer. Bulb museum, semi tropical glasshouse, restaurant, shop and exhibition facilities complete the Springfields experience. Admission adults £2.50, OAP £2.30 (accompanied children free).

## HELEN WEBBER - GEEST GALLERY, AYSCOUGH FEE HALL, SPALDING

An exhibition of works by local artist Helen Webber. Exhibition runs from April 1 - 30. Helen, an art tutor, runs the Riverbank Studios in Spalding with partner John Gray. Admission free.

## THE GROWING STORY IS TOLD

The Spalding Bulb Museum and Horticultural Exhibition at Birchgrove Garden Centre, Pinchbeck. Open for its first season this museum will illustrate the heyday of the Spalding bulb industry. Other attractions include a photographic history of people in the Fens, display gardens, gift shops, Mega Pet shop, coffee shop and children's play area.

## BAYTREE NURSERIES - A FESTIVAL OF FUN

Baytree Nurseries Garden Centre, Weston - famous and renowned. Admission free (9am - 6pm). Tulip gardens - specially created tulip gardens for your pleasure. Bygones museum - A collection of old horticultural and domestic scenes. Special showing of Sir Winston Churchill 'wax figure' from Madame Tussauds. Owl Centre - Over 50 beautiful birds with new arrivals all the time. Flying displays twice daily at 11am and 3pm throughout the festival. Owl Centre admission - adults £1.80, OAP/child £1.30, under four free. Art demonstrations - Local artists will be painting on site. Paintings for sale, commissions taken.

Craft Fair Extravaganza - over 30 stalls and display stands on display in the large hall adjacent to the north car park. Demonstrations and displays on local crafts. Free admission - donations to charity accepted.

BOLD Tulip Tandem Marathon - one of the

largest sighted/blind cycle events in the country. Children's events - large bouncy castle, fire engine, adventure playground. Baytree Ice Cream Parlour - specially built, selling very special ice cream! Baytree experts - watch out for the yellow stars each day of the festival! Hop Inn Restaurant - seating capacity of 180 with self service meals and fast foods.

Breakfast, morning coffee, lunch and teas, 9am - 6pm, bookings welcome (01406 370084).

Additional facilities - free wheelchair use and baby changing.

## LINCOLNSHIRE LIBRARY SERVICE

To celebrate the theme of this year's Spalding Flower Parade - The World of Books - the Lincolnshire Library service in South Holland will be organising displays and competitions during the festival period. A design a float competition, open to five to 11-year-olds will allow one lucky child to take part in the flower parade riding high on the library service float. For more details contact your local library.

## SOUTH HOLLAND CHORAL PROJECT

The Land. Gedney Church, premiere 7.30pm. "The Land" is a specially commissioned community choral piece written by professional composer Patrick Hawes and lyricist Andrew Hawes. The work looks at South Holland's unique seasons and working land to create a rich new choral work. The combined talents of Cantemus, South Holland Singers, South Lincolnshire Chorale and Spalding Parish Church Boys' Choir, along with a specially formed choir enabling other interested singers to participate, will provide a dramatic launch to South Holland's Arts Festival. The combined choir will be over 200 voices strong and will be accompanied by the Lincolnshire Youth Symphony Orchestra.

**SUNDAY, APRIL 30**

## WELCOME TO THE FESTIVAL

A peel of bells will ring out from churches and chapels from around South Holland to welcome visitors and residents to the 1995 Spring Festival.

## CHURCH FLOWER FESTIVALS

Decorated church flower festivals open today: Spalding Parish Church of St Mary and St Nicolas; Spalding United Reformed Church; St Mary and the Holy Rood, Donington; Fleet Parish Church; St Peter and St Paul, Gosberton; Holbeach Parish Church; Holbeach Methodist Church; St Mary's Parish Church, Pinchbeck; St Mary's, Long Sutton; Moulton Parish Church; Moulton Chapel Church and Chapel; St Lawrence Church, Surfleet. More details on page 36.

## ART EXHIBITION - RIVERBANK STUDIOS, SPALDING

See Saturday  
FESTIVAL STREET ANIMALS

## SPRINGFIELDS GARDENS

See Saturday  
HELEN WEBBER - GEEST GALLERY, AYSCOUGH FEE HALL, SPALDING

## THE GROWING STORY IS TOLD

See Saturday  
LINCOLNSHIRE LIBRARY SERVICE

## BAYTREE NURSERIES - A FESTIVAL OF FUN

Tulip gardens, Bygones Museum, Owl Centre, art demonstrations, craft fair extravaganza. Children's events, Hop Inn Restaurant and Baytree experts for more details see Saturday listings.

## ST MARY AND ST NICOLAS PARISH CHURCH, SPALDING

St Mary's Singers will entertain in a special event in the decorated medieval parish church in Spalding town centre, 2.30pm.

## TROUBLED WATERS - SOUTH HOLLAND CENTRE GALLERY, SPALDING

An exhibition featuring large contemporary figurative works in both oil and acrylic by Spalding based artist and tutor John Gray. John has had many one man exhibitions and his work is included in many public and private collections. John moved to Lincolnshire in 1979 and now runs Riverbank Studios in Spalding with

partner Helen Webber. Exhibitions run from April 10 to May 27; admission free.

## FESTIVAL SONGS OF PRAISE

Spalding United Reformed Church, Pinchbeck Road, Spalding, will be holding a special festival community hymn singing service. Come along to this magnificently decorated church and join us in singing your favourite hymns. Services begins 6.30.

## A VILLAGE REMEMBERS

St Mary's Church, Pinchbeck. Let us take you back 50 years to celebrate with our special displays "Sing for Peace". Decorated church and displays. Visit our NAAFI refreshments and sing-along to hits of the forties.

## SOUTH HOLLAND CHORAL PROJECT

The Land. Gedney Church (3pm). See Saturday for details.

**MONDAY, MAY 1**

## CHURCH FLOWER FESTIVALS

See Sunday  
FESTIVAL STREET ANIMALS

## SPRINGFIELDS GARDENS

See Saturday  
ART EXHIBITION - RIVERBANK STUDIOS, SPALDING

## LINCOLNSHIRE LIBRARY SERVICE

See Saturday  
TROUBLED WATERS - SOUTH HOLLAND CENTRE GALLERY, SPALDING

## THE GROWING STORY IS TOLD

See Sunday  
BAYTREE NURSERIES - A FESTIVAL OF FUN

Tulip gardens, Bygones Museum, Owl Centre, children's events, Hop Inn Restaurant and Baytree experts - for more details see Saturday listings.

## A VILLAGE REMEMBERS

See Sunday  
THE COMEDY OF ERRORS

Third Party Productions Ltd, South Holland Centre, Spalding.

This company of ex-medieval players tackle the brightest and most accessible of Shakespeare's plays with live music and period costume; 7.30pm.

Tickets £4.50; £3.50 concessions.

**TUESDAY, MAY 2**

## SPRINGFIELDS GARDENS

See Saturday  
BAYTREE NURSERIES - A FESTIVAL OF FUN

Tulip gardens, Bygones Museum, Owl Centre, children's events, Hop Inn Restaurant and Baytree experts - see Saturday's listing. Evening demonstrations: a festival evening demonstration in the Hop Inn Restaurant on patio and container gardening by Peter and Tim Wayman. Refreshments available. Tickets £1, redeemable in the garden centre during the evening. Commences 7.30pm. Book your tickets at Baytree or call 01406 370242.

## CHURCH FLOWER FESTIVALS

See Sunday  
ART EXHIBITION - RIVERBANK STUDIOS, SPALDING

## LINCOLNSHIRE LIBRARY SERVICE

See Saturday  
TROUBLED WATERS - SOUTH HOLLAND CENTRE GALLERY, SPALDING

## THE GROWING STORY IS TOLD

See Sunday  
A VILLAGE REMEMBERS

## FRIENDLY CHESS

Spalding Chess Club invite everyone to an evening of "friendly" chess starting at 7.30pm at Spalding Services and Social Club, 24 High Street, Spalding. All welcome - beginners and grand masters! Chess coaching available. Contact Francis Bowers on 0860 408992.

**WEDNESDAY, MAY 3**

**FAMOUS WOMEN IN THE BIBLE**

A special group service at All Saints' Church, Holbeach (7.30pm). The Lincoln Archdeaconry Young Families Group - the daughter branch of the Mothers' Union, will be holding a special service with different groups throughout the area presenting a reading and hymn on a woman from the bible. Everyone welcome.

**BAYTREE NURSERIES - A FESTIVAL OF FUN**

See Tuesday

**SPRINGFIELDS GARDENS**

See Saturday

**CHURCH FLOWER FESTIVALS**

See Sunday

**ART EXHIBITION - RIVERBANK**

STUDIOS,

**SPALDING**

See Saturday

**LINCOLNSHIRE LIBRARY SERVICE**

See Saturday

**ARTS AND CRAFTS EXHIBITION - GEEST GALLERY, AYSCOUGH FEE HALL**

Spalding Arts and Crafts Society annual exhibition of works featuring many views of South Holland and the Fens. Exhibition runs from May 3 to 30 (10am to 5pm daily). Admission free.

**TROUBLED WATERS - SOUTH HOLLAND CENTRE GALLERY, SPALDING**

See Sunday

**THE GROWING STORY IS TOLD**

See Saturday

**A VILLAGE REMEMBERS**

See Sunday

**IRA BERNSTEIN IN CONCERT - SOUTH HOLLAND CENTRE, SPALDING**

Ira Bernstein is a true master of percussive dance and with live musical accompaniment will dazzle you with his jazz tap, Appalachian flatfoot clogging improvisations, traditional

English, Irish and Canadian step dances and South African boot dancing. He has to be seen to be believed! Starts at 7.30pm. Tickets £4.50; £3.50 concessions.

**THURSDAY, MAY 4 29**

**SHOP WINDOW DISPLAY COMPETITION**

Organised by FOCUS - Spalding's charity fundraisers this event is supported by Spalding Chamber of Commerce and Industry and the South Holland District Council. Shops and businesses are encouraged to decorate their windows to welcome visitors and to promote South Holland - this year's competition theme is "The World of Books". Judging takes place today. Entries to Anthony Howling on 01775 760284.

**SPRINGFIELDS GARDENS**

See Saturday

**CHURCH FLOWER FESTIVALS**

Decorated church flower festivals open today: Spalding Parish Church of St Mary and St Nicolas; Spalding United Reformed Church; St Mary and the Holy Rood, Donington; Fleet Parish Church; St Peter and St Paul, Gosberton; Holbeach Parish Church; Holbeach Methodist Church; St Mary's Parish Church, Long Sutton; Moulton Church; Moulton Chapel Church and Chapel; St Mary's Parish Church, Pinchbeck; St Lawrence Church, Surfleet; Broad Street Methodist Church, Spalding; St Paul's Parish Church, Spalding; West Pinchbeck Parish Church. More details on page 36.

**BAYTREE NURSERIES - A FESTIVAL OF FUN**

Tulip gardens, Bygones Museum, Owl Centre, children's events, Hop Inn Restaurant, Baytree experts and evening demonstration. For more details see Tuesday. Schools and Youth Groups mosaic competition. Local schools and youth groups will take part in this new event, producing flower mosaics during Thursday and Friday. Judging Friday, May 5 (5pm). Mosaics on display next to adventure play area until Sunday, May 14. Entry forms available from Baytree.

**ART EXHIBITION - RIVERBANK STUDIOS,**

**SOUTH HOLLAND 95  
SPRING FESTIVAL**

**SPALDING**

See Saturday

**LIVE AT THE RED LION**

The first of three music nights at the Red Lion Hotel, Market Place, Spalding, for the 1995 Spring Festival (9-11pm), artist to be confirmed. These three events form part of a series of music events throughout the year - see notice board at the Red Lion for more details.

**HOUSE AND BUSINESS**

**DECORATING COMPETITION**

Residents and businesses are encouraged to decorate their premises to welcome visitors and to celebrate the festival. The competition, organised by FOCUS - Spalding's charity fundraisers - has cash prizes and trophies. Judging takes place over flower parade weekend. Entries to Anthony Howling on 01775 760284.

**LINCOLNSHIRE LIBRARY SERVICE**

See Saturday

**ARTS AND CRAFTS EXHIBITION - GEEST GALLERY, AYSCOUGH FEE HALL**

See Wednesday

**TROUBLED WATERS - SOUTH HOLLAND CENTRE GALLERY, SPALDING**

See Sunday

**THE GROWING STORY IS TOLD**

See Saturday

**A VILLAGE REMEMBERS**

See Sunday

**SOUTH HOLLAND CONCERT CLUB**

A special concert is held this evening at the Parish Church of St Mary and St Nicolas at 7.30pm. Everyone welcome. Admission free.

**TUBY'S FUN FAIR - SPALDING**

All the fun of the fair with Roger Tuby's fun fair and side show - Spalding town centre.

# LUXURY, WITH CHARACTER

## Stanground Village Marina



Exclusive 3 and 4 bedroom bungalows and houses set in tranquil surroundings in our Marina development, close to the City of Peterborough, offering luxury accommodation, complete with your own moorings.

**Prices range from £108,000**

**COME ALONG  
AND JUDGE  
FOR  
YOURSELVES**

**NEW  
Show Homes  
Open at both  
Developments**

**M. PARKER  
& SONS  
LTD**

**St John's Road  
Spalding  
Tel:**

**(01775)  
724777**

## Eastfields, Bourne



Development of 3 and 4 bedroom bungalows and houses. Well designed with the family in mind. In a popular location close to the market town of Bourne, which offers all major facilities (including Grammar Schools).

**Prices range from £71,000**

# SOUTH HOLLAND 95 SPRING FESTIVAL

30

**FRIDAY, MAY 5**

## LIVE AT THE RED LION

See Thursday  
SHOP WINDOW DISPLAY COMPETITION

See Thursday  
SPRINGFIELDS GARDENS

See Saturday  
ZEBRA - LIVE AT THE SHIP ALBION

Local band Zebra, supported by Spalding business Hargrave International, will be entertaining us all tonight at the Ship Albion Public House, Albion Street, Spalding (8.30-11pm), free admission.

## MOSAIC AND SCULPTURE COMPETITION

Brightly coloured mosaics and sculptures feature in this annual event organised by FOCUS - Spalding's charity fundraisers. Entries can be spotted throughout the South Holland area from today. Judging takes place tonight for the FOCUS Challenge Shield. Entry is free - to enter contact Anthony Howling on 01775 760284.

## BAYTREE NURSERIES - A FESTIVAL OF FUN

See Thursday  
CHURCH FLOWER FESTIVALS

Decorated church flower festivals open today: Spalding Parish Church of St Mary and St Nicolas; Spalding United Reformed Church; St Mary and the Holy Rood, Donington; Fleet Parish Church; St Peter and St Paul, Gosberton; Holbeach Parish Church; Holbeach Methodist Church; St Mary's Parish Church, Long Sutton; Moulton Church; Moulton Chapel Church and Chapel; St Mary's Parish Church, Pinchbeck; St Lawrence Church, Surfleet; Broad Street Methodist Church, Spalding; St Paul's Parish Church, Spalding; West Pinchbeck Parish Church; St John the Baptist Church, Spalding;

## ART EXHIBITION - RIVERBANK

STUDIOS, SPALDING  
See Saturday

HOUSE AND BUSINESS  
DECORATING  
COMPETITION

See Thursday

LINCOLNSHIRE  
LIBRARY SERVICE

See Saturday

ARTS AND CRAFTS  
EXHIBITION - GEEST

GALLERY, AYSOUGHFEE HALL

See Wednesday

TROUBLED WATERS -  
SOUTH HOLLAND

CENTRE GALLERY,  
SPALDING

See Sunday

SPALDING PARISH  
CHURCH OF ST MARY  
AND ST NICOLAS

The choir of Spalding Parish Church will sing for visitors and locals to this special event. Admission free (7.30).

## THE GROWING STORY IS TOLD

See Saturday

A VILLAGE REMEMBERS

See Sunday

TUBY'S FUN FAIR, SPALDING

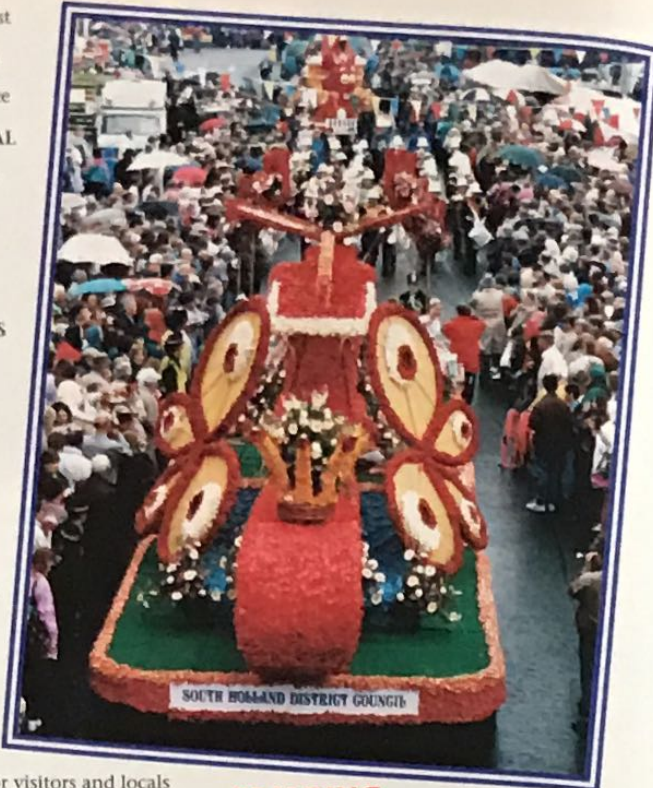
See Thursday

## GRAND MASTER CHESS CHALLENGE

Raymond Mays Cars sponsors this simultaneous chess display. Children five to 11 years, Whaplode C of E Primary School, Mill Lane, Whaplode (2-4pm). 11-19 years, Spalding Grammar School, Priory Road, Spalding (4.30-6.30). All ages, Tulips Social Club, Sir Halley Stewart Field, Winfrey Avenue, Spalding (7.30-9.30). Entry is free but limited - contact Francis Bowers on 0860 408992.

Fleet Baptist Church; Gosberton Methodist Church. See page 36.

FESTIVAL STREET ANIMALS  
See Saturday



## SPALDING FLOWER PARADE, SATURDAY, MAY 6

● ABOVE: Flashback to 1994

## Holland Rotary Club.

SPALDING FLOWER FESTIVAL, FLOAT EXHIBITION AND COUNTRY FAIR

For the first time ever all the main activities of parade day will be sited at the splendid Springfields Gardens, Spalding. Float displays, trade stands, entertainment, craft fair, displays, marching bands, 25 acres of spring flowering gardens, restaurant and on-site catering. Admission £5 adults, accompanied children free.

## INFORMATION PEOPLE

Spalding 18+ Group - a lively bunch of locals - will be on hand all day at strategic points to assist visitors with questions on where to go, what to see, where to eat and drink and all the questions that only a local can answer!

## 50s/60s NIGHT

The University of Lincolnshire Project will be holding a 50s/60s night at South Holland Centre, Spalding (8pm). Dance the night away to some of the hits from the real era of good "pop" music. Join in and help the Lincolnshire University Project. More details from South Holland Centre.

## SHOP WINDOW DISPLAY COMPETITION

See Thursday  
BAYTREE NURSERIES - A FESTIVAL OF FUN

See Thursday

## MOSAIC AND SCULPTURE COMPETITION

Brightly coloured mosaics and sculptures feature in this annual event organised by FOCUS - Spalding's charity fundraisers. Entries can be spotted throughout the South Holland area.

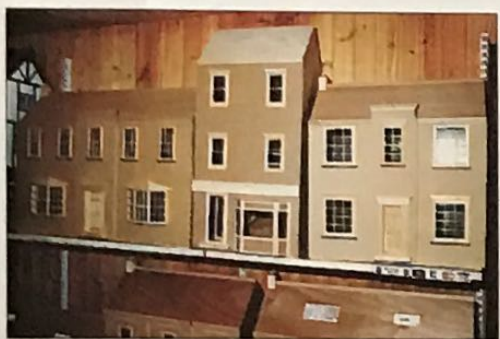
## CHURCH FLOWER FESTIVALS

Open today: Spalding Parish Church of St Mary and St Nicolas; Spalding United Reformed Church; St Mary and the Holy Rood, Donington; Fleet Parish Church; St Peter and St Paul, Gosberton; Holbeach Parish Church; Holbeach Methodist Church; St Mary's Parish Church, Long Sutton; Moulton Church; Moulton Chapel church and chapel; St Mary's Parish Church, Pinchbeck; St Lawrence Church, Surfleet; Broad Street Methodist Church, Spalding; St Paul's Parish Church, Spalding; West Pinchbeck Parish Church; St John the Baptist Church, Spalding; Fleet Baptist Church; Gosberton Methodist Church; St Norbert's Catholic Church, Spalding. See page 36.

● TO page 31.

## GRANARY MODELS & HOBBIES

31 HIGH STREET, SWINESHEAD  
Nr. BOSTON Tel: (01205) 820115



★ DOLLS HOUSES READY MADE 1/12 SCALE MADE FROM MDF BOARD WITH WINDOWS, DOORS, STAIRCASES, FROM £80 UP TO £290. SHOPS FROM £35

★ WALLPAPERS, LIGHTING, FURNITURE, MINIATURES

★ WINDOWS, DOORS, STAIRS, FITTINGS AND TOOLS FOR D.I.Y.

★ MINICRAFT DRILLS & ACCESSORIES

**MODEL RAILWAYS**  
for all ages  
Ready to run  
gauges '00',  
'N'.  
Accessories  
and scenics

**★ HOBBYS STOCKISTS**  
1995 annual  
£2.20  
Large range  
stocked or  
readily  
ordered

**★ MODEL SHIP, BOAT AND GALLEON KITS**

**★ MAMOD STEAM ENGINES**  
Spare parts  
★ PRINCE AUGUST  
★ MOULDS for  
metal casting  
soldiers and  
fantasy

**★ SUPERCAT MOULDS**  
Good selection in  
stock. Garden  
gnomes, animals  
miniature cottages,  
chess sets. Casting  
materials, plaster,  
stonecase, formelo

Open Monday-Saturday 9.30 am-5.30 pm. Sunday 2pm - 5pm

**Open bank Holidays**



ST MARY'S CHURCH, PINCHBECK  
Reminisce with us, a special supper and  
entertainment evening in the church hall (7.30).

#### FESTIVAL STREET ANIMALS

See Saturday, April 29

#### ROCKIN GOOD RHYTHM AND BOOZE

All day events at the Lincolnshire Poacher  
Public House, Double Street, Spalding. Noon -  
3pm lunchtime session with Zebra - good live  
music. 8.30-11pm easy evening session with  
local favourites Zebra - supported by Spalding  
based Hargrave International.

#### ART EXHIBITION - RIVERBANK STUDIOS, SPALDING

See Saturday, April 29

#### HOUSE AND BUSINESS DECORATING COMPETITION

See Thursday

#### LINCOLNSHIRE LIBRARY SERVICE

To celebrate the theme of this year's Spalding  
Flower Parade - The World of Books - the  
Lincolnshire Library service in South Holland  
will be organising displays and competitions  
during the festival period. A marquee containing  
special displays and events will be sited at the  
main festival site, Springfields Gardens, today.  
Come along and meet characters from children's  
books and take part with the day's activities.

#### ARTS AND CRAFTS EXHIBITION - GEEST GALLERY, AYSCOUGH FEE HALL

See Wednesday

#### TROUBLED WATERS - SOUTH HOLLAND CENTRE GALLERY, SPALDING

See Sunday

#### THE GROWING STORY IS TOLD

See Saturday, April 29

#### A VILLAGE REMEMBERS

See Sunday

#### TUBY'S FUN FAIR, SPALDING

See Thursday

#### ST MARY AND ST NICOLAS PARISH CHURCH, SPALDING

Musical events throughout the day with  
organ recitals, steel band and choral music.  
5pm short choral evensong. 7.30 Crown Hills  
School Steel Band Concert.

### SUNDAY, MAY 7

#### SPALDING FLOWER FESTIVAL, FLOAT EXHIBITION AND COUNTRY FAIR

For the first time ever all the main activities of  
Parade Day will be sited at the splendid  
Springfields Gardens, Spalding. Float displays,  
trade stands, entertainment, craft fair, displays,  
marching bands, 25 acres of spring flowering  
gardens, restaurant and on-site catering.  
Admission £5 adults, accompanied children free.

#### INFORMATION PEOPLE

See yesterday's listing

#### TULIP - ALL BREED CHAMPIONSHIP CAT SHOW

10am-5pm Castle Sports Complex, Albion  
Street, Spalding. A show of pure class, wide  
variety of cats on show, charity cat stalls, cat  
crafts and many more attractions. Held during  
National Pet Week. Admission adults £1,  
OAP/child 75p. For more details and to enter  
contact Mel Preston on 01406 330584.

#### FESTIVAL STREET ANIMALS

See Saturday, April 29

#### ART EXHIBITION - RIVERBANK STUDIOS, SPALDING

See Saturday, April 29

#### ST MARY'S CHURCH, PINCHBECK

11am special family service in decorated  
church

#### SHOP WINDOW DISPLAY COMPETITION

See Thursday

#### BAYTREE NURSERIES - A FESTIVAL OF FUN

Tulip gardens, bygone museum, owl centre,  
children's events, Hop Inn Restaurant and  
Baytree experts - see Thursday's listings for more  
details. Model railway demonstrations - Spalding  
Model Railway will entertain us with two layouts  
and railway info and stalls. Mammoth model car  
rally - an open meeting, this event should bring  
enthusiasts from all over the country. The classes  
include two-wheel and four-wheel drive vehicles,  
Rally Cross cars, trucks and special monster truck  
displays. Racing commences at 9.30 with cups

and prizes in each section. It is hoped  
that this will be the first of an annual  
event at Baytree. Exotic pets - many  
fascinating animals and birds for you  
to see.

Mercedes - commercial trade stand  
and sponsors of the staging for our  
musical events. Gosberton  
Preservation Society - an outstanding  
display of working machinery for the  
young as well as older enthusiasts.

Vintage motor cycles - approximately 40 custom  
motorcycles will be with us from all over the  
country. Custom built cars - lovely older cars and  
custom built cars will be displayed today by their  
proud owners. Band music - bands from all over  
the country will entertain. Clowns - look out for  
them all day. Falconry - Mr Mul Holland will be  
working in conjunction with the Owl Centre  
with his falconry display. Yorkshire TV will be  
around today to film - you could be a star!

#### LIVE AT THE RED LION (8.30pm-10.30pm)

See Thursday

#### MUSIC AT QUADRING

Spalding Grammar School Concert Band and  
Quadring Primary School event hosted by Eric  
Wayman at Quadring Church, 6.30. Admission  
£2.50 (school children free).

#### MOSAIC AND SCULPTURE COMPETITION

See yesterday's listing

#### ART EXHIBITION - RIVERBANK STUDIOS, SPALDING

See Saturday, April 29

#### CHURCH FLOWER FESTIVALS

Decorated church flower festivals open today:  
Spalding Parish Church of St Mary and St  
Nicolas; Spalding United Reformed Church; St  
Mary and the Holy Rood, Donington; Fleet  
Parish Church; St Peter and St Paul, Gosberton;  
Holbeach Parish Church; Holbeach Methodist  
Church; St Mary's Parish Church, Long Sutton;  
Moulton Parish Church; Moulton Chapel  
Church and Chapel; St Mary's Parish Church,  
Pinchbeck; St Lawrence Church, Surfleet; Broad  
Street Methodist Church, Spalding; St Paul's  
Parish Church, Spalding; West Pinchbeck Parish  
Church; St John the Baptist Church, Spalding;  
Fleet Baptist Church; Gosberton Methodist  
Church. See page 36.

#### FESTIVAL STREET ANIMALS

See Saturday, April 29

#### HOUSE AND BUSINESS

#### DECORATING

#### COMPETITION

See Thursday

#### MOULTON CHAPEL FLOWER PARADE

Village parade of  
decorated floats, lorries  
and cars. Local arts and  
crafts, produce,  
refreshments, side-  
shows. Parade  
commences 3pm.

#### LINCOLNSHIRE LIBRARY SERVICE

To celebrate the  
theme of this year's  
Spalding Flower Parade,  
The World of Books, the  
Lincolnshire Library  
service in South Holland  
will be organising  
displays and  
competitions during the  
festival. A marquee  
containing displays and  
events will be sited at  
the festival site,  
Springfields Gardens,  
today. Meet characters  
from children's books  
and take part with the  
day's activities.

#### ARTS AND CRAFTS

#### EXHIBITION -

#### AYSCOUGH FEE

#### HALL

see Wednesday

#### TROUBLED WATERS

#### - SOUTH HOLLAND

#### CENTRE GALLERY,

#### SPALDING

31

## SOUTH HOLLAND 95 SPRING FESTIVAL

See Sunday, April 30

#### THE GROWING STORY IS TOLD

See Saturday, April 29

#### A VILLAGE REMEMBERS

See Sunday, April 30

#### TUBY'S FUN FAIR - SPALDING

See Thursday

#### OLD HOLBEACH AND ALADDIN'S CAVE

Exhibition by Mrs Jenny Paul, 10am-3pm at 38  
Fleet Road, Holbeach. No admission charges -  
donations to Friends of Holbeach Hospital.

#### ST MARY AND ST NICOLAS PARISH CHURCH, SPALDING

2.30 - handbell ringers from St Wulframs,  
Grantham. 6.30 - Spalding's thanksgiving songs  
of praise, commemorating 50 years since VE Day.

### MONDAY, MAY 8

### - V E DAY CELEBRATIONS

#### ST MARY AND ST NICOLAS PARISH CHURCH, SPALDING

8.30am special eucharist of thanksgiving for  
peace. 4pm Churchyard tea party - stalls, games,  
refreshments. 6pm VE Day brass band concert

#### SPALDING FLOWER FESTIVAL, FLOAT EXHIBITION AND COUNTRY FAIR

See yesterday's listing

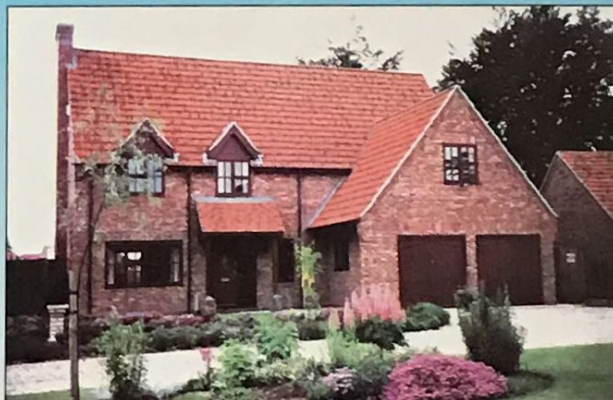
#### ST MARY'S CHURCH, PINCHBECK

11am VE Day service. 6pm Concert for VE  
Day. Hosted by Eric Wayman, Spalding Grammar  
School Concert Band and Pinchbeck Church  
Choir. Simon Inkle and his organ. Admission  
£3, children free. Donation from proceeds to  
Royal British Legion. Refreshments following  
concert.

ALLISON  
PREMIER  
HOMES

means the confidence to  
build your dream home

In addition to offering luxury properties from our selected  
developments, we can build one of our exclusive property  
styles on your plot of land  
or design and build to your specifications. Developments  
currently available at Spalding and Carby, Nr Stamford



ALLISON PREMIER HOMES, SWALLOW HOUSE, BANBURY  
CLOSE, WEST ELLOE AVENUE, SPALDING, Lincs PE11 2BS  
TELEPHONE: (01775) 762740



**SPRINGFIELDS GARDENS AND FLOAT DISPLAY**

See Tuesday's listing  
Special event today - Colour Box Collectors fair (see below)

**SHOP WINDOW DISPLAY COMPETITION**

See Thursday, May 4

**ART EXHIBITION - RIVERBANK STUDIOS, SPALDING**

See Saturday, April 29

**HOUSE AND BUSINESS DECORATING COMPETITION**

See Tuesday

**LINCOLNSHIRE LIBRARY SERVICE**

See Tuesday

**ARTS AND CRAFTS EXHIBITION - GEEST GALLERY, AYSCOUGH FEE HALL**

See Wednesday, May 3

**TROUBLED WATERS - SOUTH HOLLAND CENTRE GALLERY, SPALDING**

See Sunday, April 30

**THE GROWING STORY IS TOLD**

See Saturday, April 29

**BAYTREE NURSERIES - A FESTIVAL OF FUN**

Tulip gardens, bygone museum, Owl Centre, children's events, mosaic competitions etc - see previous listings.

Amateur Pet Show - a repeat of last year's great success! Bring along your pets, entry forms from Baytree Shop or call 01406 370242. Judging starts at 11am with prizes and cups in each category so come along early to be entered. Prize ceremony at 4pm, plus lots of stalls and displays.

Hedgehog Roadshow - here all weekend with all the little animals for you to see.

Dulux Dog - come along and have a cuddle with TV's own adorable dog. He will be collecting for charity in his own special way.

**STEP INTO SPRING**

Gleed Girls' GM School, Spalding (7.30 to midnight)

Dance the night away with the sounds of the Mark Graham Band, mixed dancing, everyone welcome. Event organised by Gleed Girls' School PTA.

**COLOUR BOX COLLECTORS' EVENT**

Springfields Exhibition Centre, Spalding.

A special event for Colour Box collectors and visitors alike, special collectors' event piece, swap and sell area, auction, model and paint your own miniature, exhibitions, competitions, quizzes, vintage fairground attractions, laser clay pigeon shooting and many more stands and attractions. 10am - 5pm. Admission: adults £2.50, OAP £2.30 (accompanied children free); admission includes entry to Springfields Gardens and float display.

**40s NIGHT**

The Spalding based PHAB group are hosting a 40s night at St Nicolas Hall, Churchgate, Spalding. An authentic evening of music and atmosphere featuring Nicholas Martin on the organ and local favourite Benny Copland playing hits from the forties and including a 1940 style buffet. Fun starts at 7.30 (why not join in the fun and come dressed to match the period!). Tickets are only £4 available from Mrs Hollis on 01775 769636.

**"THAT REMINDS ME ...."**

An evening with Barry Cryer, South Holland Centre, Spalding (8pm).

Barry Cryer, the master of the one-liner, is taking to the road with his one-man show, with

Colin Sell at the piano. The show features Barry joking, singing and he will even dance if requested. The audience can have their say too - by placing questions or topics upon which they wish Barry to discourse in "Barry's Bucket". This promises to be an hilarious experience! Tickets £6.50; £5 concession.

**SUNDAY, MAY 14**

**BAYTREE NURSERIES - A FESTIVAL OF FUN**

See previous listings

**COLOUR BOX COLLECTORS' EVENT**

See yesterday's listing

**SHOP WINDOW DISPLAY COMPETITION**

See Thursday, May 4

**ART EXHIBITION - RIVERBANK STUDIOS, SPALDING**

See Saturday, April 29

**HOUSE AND BUSINESS DECORATING COMPETITION**

See Tuesday

**ARTS AND CRAFTS EXHIBITION - GEEST GALLERY, AYSCOUGH FEE HALL, SPALDING**

See Wednesday, May 3

**TROUBLED WATERS - SOUTH HOLLAND CENTRE GALLERY, SPALDING**

See Sunday, April 30

**THE GROWING STORY IS TOLD**

See Saturday, April 29

**SPRINGFIELDS GARDENS AND FLOAT DISPLAY**

See Tuesday

● **PICTURED above**

right: A special event is to be held at Springfields Exhibition Centre, Spalding, for Colour Box collectors and visitors.

There will be a swap and sell area, auction, model and paint your own miniature, exhibitions, competitions etc.

More details about the event appear on page 41.

**Saturday,  
May 13,**

**Sunday,  
May 14**



Suit by Paul Costelloe £99

**Looking like  
a million  
dollars  
needn't cost  
a fortune!**

Over 3000 finest quality  
nearly new garments in  
stock for ladies  
gentlemen and  
children

**12 ROOMS  
TO EXPLORE**

**UPPINGHAM  
DRESS AGENCY**

**2-6 Orange Street,  
Uppingham, Rutland**  
**Tel 0572 823276 - Open 7 days a week**

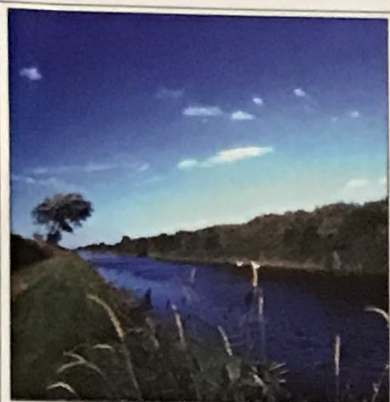
**Come again in '96**

**WE HOPE you have enjoyed the 1995 South Holland Spring Festival and hope we can look forward to seeing you at the 1996 festival:**

● **SOUTH HOLLAND SPRING FESTIVAL -**

**April 27 - May 12, 1996**

● **SPALDING FLOWER PARADE - May 4, 1996**



A Typical Riverside in South Holland

## Visited the Spalding Flower Parade? Come back and discover South Holland



There is so much more  
to the  
'Heart of the Fens'  
whatever the time of year.

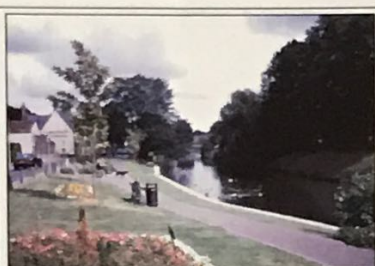
From the S.H.E exhibition of spring flowers in February to a summer of the ever-changing landscape of the Fen, the marsh and the Wash and a variety of tourist attractions. So if you think Spalding is only for visits in the spring, think again. Send for a pack of activity leaflets that will guide you through this unique part of Britain.

*South Holland*  
LINCOLNSHIRE  
The heart of the Fens

Tourist Information, Ayscoughfee Hall,  
Churchgate, Spalding PE11 2RA.  
Tel: (01775) 725468

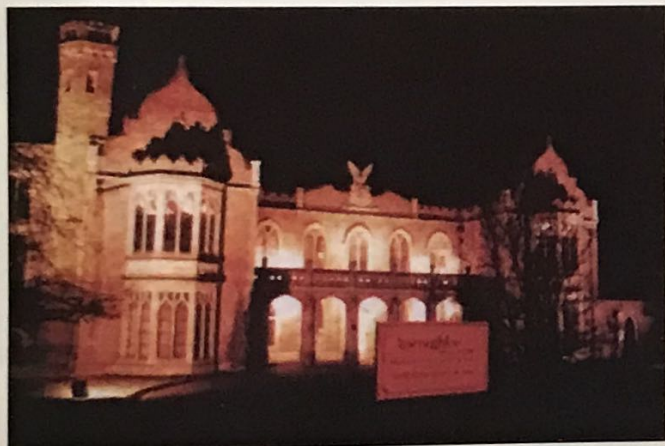


Church Street,  
Spalding



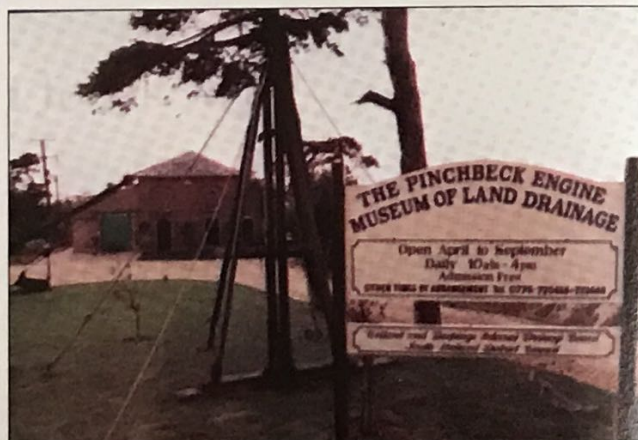
Double Street,  
Spalding

## TWO SUPERB MUSEUMS IN SPALDING THE DRAINAGE STORY: THE HISTORY OF THE FENS



### Ayscoughfee Hall Museum & Gardens

The Museum of South Holland and the Lincolnshire Fens  
Churchgate, Spalding  
Open daily except winter weekends  
Tel: (01775) 725468



### Pinchbeck Engine and Land Drainage Museum

Steam beam engine driving a scoop wheel  
erected 1833 now restored to working order.  
West Marsh Road, Pinchbeck  
Open daily April-October. Tel: (01775) 725668



## Church hall to Naafi

PINCHBECK Church Hall will be turned into a Naafi for the annual flower festival - but there will be no rationing here!

Hearty, old fashioned hot meals will be served by waitresses in 40s style to the strains of We'll Meet Again, White Cliffs of Dover and Run Rabbit Run.

Theme of the flower festival at St Mary's Church, Pinchbeck, (Sunday, April 30-Tuesday, May 9) is "A Village Remembers", because the event overlaps VE day on May 8.

Wartime memorabilia will be on display and there will be a tombola of 'rationed' items, such as soap, sugar and tea!

Events include: **Saturday,**

**May 6** - sausage and mash supper, singalong, quiz on the 40s era, and sketches. (7.30pm).

**Sunday, May 7** - family service (11am) followed by Sunday lunch for parishioners (booking essential).

**Monday, May 8** - VE Day service (11am) followed by march through village with RBL Band to "street party". 6pm - concert for VE Day at church, hosted by Eric Wayman, with Spalding Grammar School Concert Band, Pinchbeck School Choir and Simon Inkley with his organ. Refreshments in the church hall. Tickets on Spalding (01775) 725889.

● **TEA time** in the Naafi at Pinchbeck with 'waitresses', Tricia Lunn, Averil Williamson and Aileen Workman.

35

**SOUTH HOLLAND** 95  
SPRING FEST

## Johnny Morris and English Sinfonia

ENGLISH Sinfonia Orchestra is performing in South Holland.

The first performance will be during South Holland Arts Festival at South Holland Centre, Spalding.

The English Sinfonia Orchestra will be joined by TV favourite Johnny Morris (pictured) who will narrate Cinderella by Reade and Peter and the Wolf by Prokofiev, conducted by Philip Ellis.

The performance, on Friday, May 12, is at 7pm and tickets are £5 (£4 concessions; family ticket [two adults, two children] £14).

● The orchestra will be providing 'Music in the Garden', in an

open air concert at Springfield Gardens, Spalding. The event, organised by the Rotary Club of South Holland, is to be held on Saturday, July 15 - when gates will open at 5pm with the main concert 7.30pm-10.30pm.

The concert will feature English Sinfonia supported by Lincolnshire Youth Training Band and Lincolnshire Youth Symphonic Wind Band, playing popular classical and big band music, including Mozart and Arnold.

People are invited to picnic in the gardens, bringing their own



picnics and chairs if desired. The concert will culminate in a fireworks finale.

Main sponsors are Barclays Bank and Broadgate Builders, together with other local sponsors.

● Tickets are £8 (£5 for children 16 and under) available from Springfield. All proceeds will go to Rotary charities.

## BOWLING AT SKEGNESS

TOURNAMENT SPONSORS

B+H MIDLAND SERVICES

THE BOWLS SHOP, NOTTINGHAM

SKEGNESS HOTELIERS ASSOCIATION

CHAD NEWSPAPER

### E.B.F. TOURNAMENT

SINGLES, OPEN PAIRS, MIXED PAIRS, TRIPLES

1st-7th  
JULY

### E.B.A. TOURNAMENT

GENTS & LADIES SINGLES, GENTS & LADIES PAIRS, MIXED PAIRS

### E.B.A. TOURNAMENT

UNDER 31s & OVER 60s

9th-15th  
SEPT

### E.B.F. TOURNAMENT

OPEN SINGLES, OPEN PAIRS, OPEN TRIPLES

## BOWLING AT ITS BEST

ENTRY FORMS: RM.BI, TOURIST INFORMATION CENTRE, EMBASSY CENTRE, GRAND PARADE, SKEGNESS, Lincs. (01754) 767820

FREE SKEGNESS GUIDE - TEL. 01754 764519



EAST LINSEY DISTRICT COUNCIL

Cash prizes & trophies worth over £6000



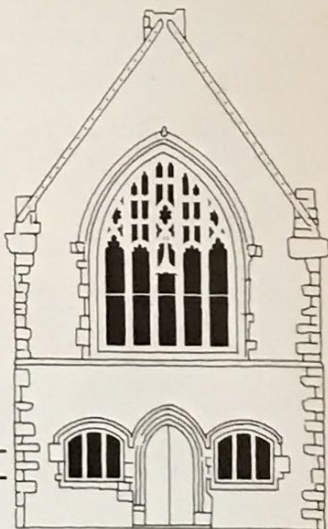
## visit the GUILDHALL museum

From Guildhall to Town Hall and now a museum of local and maritime history.

See the cells where the Pilgrim Fathers were imprisoned in 1607.

Mondays to Saturdays, 10am to 5pm throughout the year. Sundays 1.30pm to 5pm, April - Sept.

Free Admission Thursday Changing monthly exhibition programme.



**BOSTON**

South Street, Boston, Lincolnshire PE21 6HT. Tel: (01205) 365954

of 7 Pinchbeck Road, Spalding. Catering Saturday, May 6 (9am-6pm), Sunday, May 7 (9am-5pm). Salad meals, sandwiches, cakes, pastries, tea, coffee. Moderate charges. No bookings. Toilet for customers.



**A** CASCADE of colour and a feast for the eye. The annual church flower festivals play an important part in the Spring Festival and many visitors return year after year to marvel at the breathtaking displays. Many churches complement the flower festivals with refreshments and gift stalls.

\* Disabled access and toilets.

### SPALDING

Spalding Parish Church of St Mary and St Nicolas\*: Flower thanksgiving festival April 29-May 9 inclusive. The church is centrally situated and is open each day until 8pm. Booked meals and refreshments available in the Church Hall. Contact: The Parish Office, The Parsonage, Church Street, Spalding, PE11 2PB. Tel: 01775 722772.

Spalding Broad Street Methodist Church\*: Flower festival May 4-9. Parties catered for throughout the year by arrangement. No bookings on parade day, we serve breakfast from 8am thereafter at our famous cafeteria. Enquiries: Mrs E R Chappell, Fengate Road, West Pinchbeck. Tel: 01775 640381.

Spalding Baptist Church\*: Will cater for parties booked in advance for lunches and teas. For details contact: Mrs O Podd, 5 Somerby Close, Moulton, PE12 6PZ. Tel 01406 370657. No catering on Sundays, and only casual catering on parade Saturday.

St Norberts Catholic Church\*: (St Thomas's Road, Spalding) Decorated church, Lourdes Grotto. Saturday, May 6, cafeteria facilities, coach/car park. Holy mass Vigil (Saturday) 4.45pm. Sunday 8am and 10.30am. Enquiries: Tel 01775 722056.

Spalding United Reformed Church\*: Decorated church April 28-May 8. Cafeteria daily 10am-6pm. Catering for booked parties during the flower festival and throughout the year. Contact Mrs A Waltham, 96 West Elloe Avenue, Spalding. Tel 01775 766128 or 725537.

Friends Meeting House: Double Street/Westlode Street, Spalding. Salad meals, home baking. Central, open all day May 6. Toilets 01775 725153/722638.

St John Ambulance\*: Headquarters rear

Spalding Parish Church of St John the Baptist\*: Hawthorn Bank, Spalding. Decorated church May 5-8 inclusive. Teas, sandwiches etc. served each day in the church hall. Please contact the Rev K A Almond 01775 722816. From town centre take A151 (Bourne), go over the railway line and take immediate left into St John's Road to the church (one mile).

Spalding Parish Church of St Paul's\*: Spalding (near Springfields) flower festival May 4-11. Refreshments throughout. Toilets and car park. Enquiries to the Rev D Maylor. Tel: 01775 722532.

St Thomas's Road Methodist Church, Spalding: parade Saturday, May 6 (9am-5.30pm). Refreshments (home baking) tea and coffee.

### SURROUNDING TOWNS AND VILLAGES

Cowbit Village Hall\*: stalls and refreshments May 6-7, coaches welcome. Hall and kitchen facilities suitable for seminars and club meetings. Tel: 01406 380496.

Crowland Abbey: Sunday and Monday, May 7, 8 meals and food available at the Abbey Institute, Crowland Abbey. Crowland Abbey Flower Festival from Friday, August 25, to Monday, August 28 inclusive.

St Mary and the Holy Rood Donington\*: flower festival Friday April 28 - Monday, May 8 inclusive. Buffet open all day, every day. Party bookings for ham salad lunches or teas. Contact Mrs Jane Stanley, 45 Towndam Lane, Donington. Tel: 01775 821515 or 820448.

Fleet Baptist Church: flower festival May 5-8 (10am-8pm), cups of tea and light refreshments if ordered. Contact Mrs W Robbs, Camberwell, 60 Fleet Road, Fleet, Holbeach, PE12 8LA. Tel: 01406 424677.

Fleet Parish Church: flower festival Saturday, April 29 - Tuesday, May 9. Exhibitions, refreshments, tea, coffee, stalls toilets. Coaches welcome.

Gosberton Methodist Church\*: (Salem Street) flower festival Friday, May 5 - Monday, May 8 (10am-7pm). Refreshments and stalls. Tel: 01775 840792.

Gosberton St Peter and St Paul: Saturday, April 29 - Monday, May 8. Open daily 10.30am - 6pm. "Music For You". Craft stalls, refreshments available, coaches welcome, booking. Mrs E Chapman 01775 840386.

Holbeach Parish Church\*: flower festival, April 29 - May 8 inclusive. Toilets, parking. Enquiries: Canon Peter Hill 01406 422185.

Holbeach Methodist Church\*: meals available from April 20. Booked parties welcome. Flower festival in the church from April 29 to May 8. Parking and toilets. Enquiries to Mrs V M Egar, 16 East Elloe Avenue, Holbeach, Spalding, Lincs. PE12 7NB. Tel: 01406 422903.

Long Sutton St Mary's Parish Church\*: flower festival April 27 - May 8. Open daily from 10am to 8pm. Refreshments including lunches and teas served daily 10am-6pm. Produce and craft stalls. Coach parties welcome. Parking. Enquiries and bookings to: Brian Ford, 149 Spring Gardens, Long Sutton PE12 9HX. Tel: 01406 364889.

Moulton Church\*: flower fiesta April 29 - May 8 inclusive. Booked coach parties for luncheon, high tea, afternoon tea. Tea by the village green for casual visitors or coaches. Plants, china and craft stalls. Mrs M Fowler, The Vicarage, Church Lane, Moulton, Spalding PE12 6NP. Tel: 01406 370791.

Moulton Chapel Decorated Church and Chapel\*: from April 29. Village parade Sunday, May 7 at 3pm led by Northampton Pipe Band, Majorettes, fancy dress, floats, vintage cars, stalls, children's amusements (swingboats, castle of fun). Coaches welcome. Free parking. Refreshments. Contact: Mrs M Canham 01406 380458.

Pinchbeck St Mary's Parish Church\*: flower festival April 30 to May 9. Hot meals, snacks, coffee shop daily in Church Hall. Coaches welcome (meals pre-booked please). Brochure Tricia Lunn, 35 Independence Drive, Pinchbeck PE11 3TR. Tel: 01775 725889 or Avrel 01775 710189.

Surfleet Flower Festival\*: ancient church with famous leaning tower on A16. From April 30. Toilets, food, local produce, cakes. Coaches welcome. Mrs R Scrivener, 84 Station Road, 01775 680260.

West Pinchbeck Church: flower festival Thursday, May 4 - Tuesday, May 9. Refreshments, gifts and produce. Toilets. Enquiries: Mrs H Gotobed 01775 750536. Hall and kitchen facilities suitable for seminars and club meetings. Enquiries: Mr J M Peach 01775 640271.

## Images of Lincolnshire - £12.99

IMAGES of Lincolnshire is the latest video production from Praxis Films, featuring Spalding Flower Parade 1994.

The hour long film examines a year in the life of the county, shot in over 100 locations and covering everything from the local village panto and harvest to Lincoln's cathedral and castle and the heritage of Boston.

But it is the flower parade that takes

centre stage with its floats, its bands, its crowds and its wonderful, wonderful flowers.

Images of Lincolnshire is available from Springfield Gardens and all good retailers throughout the county at £12.99.

It is also available by mail order, adding £1 for postage and packing to make a total price of £13.99, from Praxis Films, PO Box 290, Market Rasen, Lincs LN3 6BB.

Spalding Parish  
Church of St Paul's  
**FLOWER  
FESTIVAL**

"Parables and Pairs"

**MAY 4th-11th**

Refreshments throughout.  
Toilets and car park.

SPALDING

(Nr Springfields)

Enquiries to Rev D. Maylor

Tel: (01775) 722532

7r3008x

**SPALDING  
FLOWER  
PARADE '95**

**SATURDAY, 6th MAY**

8am - 6pm

★ Car Parking Facilities

★ Refreshments

★ Toilets

ST JOHN THE BAPTIST  
SCHOOL

Hawthorn Bank

Spalding, Lincs.

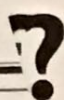
Tel: (01775) 722644

7r2830



**SOUTH HOLLAND 95  
CHURCH FLOWER  
FESTIVALS**

**\$95**



**Gosberton Methodist  
Church  
FLOWER FESTIVAL**

"Life of Joseph"

**FRIDAY, 5th May -**

**MONDAY, 8th MAY**

Inclusive - 10 am - 7 pm

Refreshments and stalls

SALEM STREET

Gosberton, Spalding, Lincs.

For enquiries: Tel: (01775) 840792

**Long Sutton St Mary  
Parish Church**

**Flower Festival**

Based on Show Time Theme. 27th April-8th May

Open daily from 10 am to 8 pm.  
Refreshments including lunches and teas  
served daily 10 am-6 pm.

Produce and craft stalls.  
Coach parties welcome. Good parking.

Enquiries and bookings to:  
Brian Ford, 149 Spring Gardens, Long  
Sutton, PE12 9HX.  
Tel: 01406 364889.

**Moulton Chapel  
St James and  
Methodist Church**

will be decorated from

**28th April-8th May**

Methodist Serving Light Refreshments.

Stalls, including Homemade Jams,  
Cakes and Crafts.

Coaches welcome. Free Parking

Enquiries: Mrs M. Canham  
Tel (01406) 380458

**Holbeach  
Parish Church  
Flower Festival 29th April  
to 8th May**

Live Demonstration of Crafts  
to include: Calligraphy,  
Chair-caning, Lacemaking, Also  
Book and Craft Stalls. Toilets.  
Parking.

Enquiries Canon Peter Hill.  
Tel (01406) 422185

**Holbeach Methodist  
Church**

Meals available  
from 20th April.

Booked parties welcome.

**Flower Festival in the  
Church from 29th April  
to 8th May.**

Parking and Toilets.

Enquiries to: Mrs V. M. Egar  
16 East Elloe Avenue, Holbeach,  
Spalding, Lincs PE12 7NB.  
Tel 01406 422903.

**Spalding United  
Reformed Church**

**Decorated Church  
28th April-8th May**

Cafeteria daily, 10 am-6 pm.  
Catering for booked parties during  
the Flower Festival and throughout  
the year.

Contact Mrs A. Waltham,  
96 West Elloe Avenue, Spalding.  
Tel 01775 766128 or 725537

**Flower Festival Programme**

The Church will be decorated for the  
Festival from Saturday, 29th April to  
Tuesday, 9th May

**Sunday, 30th April**

8.00am Eucharist  
9.30 & 11.00am SUNG EUCHARIST  
2.30pm St Mary Singers  
6.30pm Choral Evensong

**Thursday, 4th May**

7.30pm S. Holland Concert  
Club Concert

**Friday, 5th May**

7.30pm Parish Church Choir Sings

**Saturday, 6th May - Parade Day**

Musical events during the  
day, including organ,  
choral and steel band  
music.  
5.00pm Short Choral Evensong  
7.30pm Crown Hills School,  
Leicester, Steel Band  
Concert.

**Sunday, 7th May**

8.00am Eucharist  
9.30 & 11.00am SUNG EUCHARIST  
2.30pm Handbell Ringers from St  
Wulfram's, Grantham.  
6.30pm Spalding's Thanksgiving  
Songs of Praise.  
Commemorating 50  
years since V.E. Day.

**Monday, 8th May**

9.30am Special Eucharist of  
Thanksgiving for Peace  
4.00pm Churchyard Tea Party  
6.00pm V.E. DAY Brass Band  
Concert

**SPALDING PARISH CHURCH  
OF ST MARY & ST NICHOLAS**

Contact: The Parish Office, The Parsonage,  
Church Street, Spalding PE11 2PB.  
Tel. 01775 722772

2m1268

**Spalding Parish  
Church of  
St John the Baptist**

**Hawthorn Bank, Spalding.**

Decorated church 5th-8th May  
inclusive.

Teas, Sandwiches etc served each  
day in the church hall.

Please contact the Rev K. A. Almond  
(01775) 722816.

From town centre take A151 (Bourne), go  
over the railway line and take immediate  
left into St John's Road to the Church (1  
mile).

**Broad Street  
Methodist Church,  
Spalding**

**Flower Festival  
4th-9th May**

Parties catered for throughout the  
year by arrangement. No bookings  
on Parade Day.

We serve breakfast from 8 am  
thereafter our famous cafeteria.  
Enquiries Mrs E. R. Chappell, Fengate  
Road, West Pinchbeck, PE11 3NE.

Tel 01775 640381

5m

A Wide Range of  
**THOUSANDS  
OF BOOKS**

Children's Books from 30p

Range includes —

Art, Antiques, Gardening, Cookery, History and Transport.  
Paperbacks from only 99p

**BARGAIN BOOKS**

17 Market Place, Spalding, Lincs.

Tel: (01775) 760025

7r2830

**EAST MIDLANDS  
SOUND + LIGHTING**

**SUPPLIES AND HIRE**

**UNIT 21 • OLD MALT HOUSE •**

**off SPRINGFIELD ROAD •**

**GRANTHAM • Lincs NG31 7BG**

**TEL. AND FAX: (01476) 79574**

**SUPPLIERS TO CLUBS • PUBS • PROMOTIONS &  
DISCO/MOBILE INSTALLATIONS AS REQUIRED.**

**SUPPLIERS OF NDJ • CLOUD • PULSAR •**

**CITRONIC • BOSE • TECHNICS •**

**JEM • DOUGHTY • VISION • VESTAX • STANTON •**

**ORTOFON • PEAVY AND MANY OTHERS**

**OVER 1,000 SQ FT OF NEW AND SECONDHAND  
EQUIPMENT ALWAYS AVAILABLE.**

**HIRE SECTION - PA HIRE - SMOKE MACHINES AND  
MOST DISCO EQUIPMENT AT COMPETITIVE  
RATES.**

**MONTHLY SPECIAL PACKAGE OFFERS  
AVAILABLE. PLEASE RING.**

**MAIL ORDER WELCOME**

**FINANCE AVAILABLE**

**MASTERMIX SERVICE STATION**

**SHOWROOM OPEN:**

**MONDAY, WEDNESDAY AND FRIDAY**

**10-4pm TUESDAY AND THURSDAY 7-9pm**

**SATURDAY 1-4pm**

2014M

# Spring has sprung at Springfields!

**S**PRING glorious spring - and where more colourful than in Springfields Gardens!

Seas of sunny spring flowers greet the visitor to Springfields Gardens, the largest garden in Spalding and probably the only one of its type in the country.

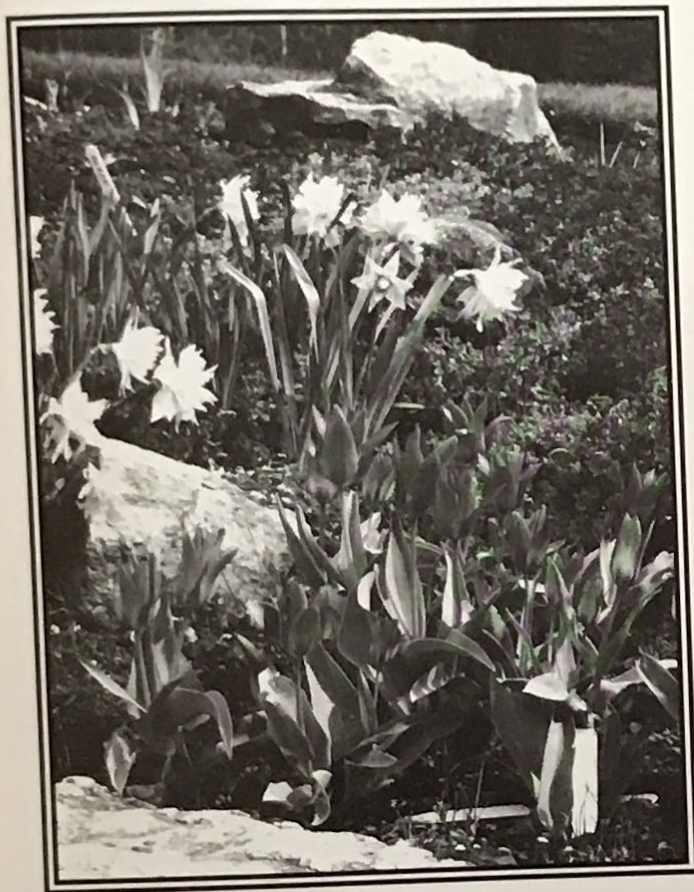
Enjoy acres of fresh blooms, leafy walkways and feature gardens, relax in the peaceful surroundings and refresh yourself in the garden's restaurant or Patio Cafe.

If you like flowers, you'll love Springfields!

● **BELOW:** SPRING in all its glory!



● **THESE** youngsters know a good thing when they see it! Children enjoying the spring display at Springfields Gardens.



● **ABOVE:** Visitors wander around the Spring displays at Springfields.

**If you like flowers, you'll love Springfields**

# Did you enjoy yourself? Then why not return?

**S** PALDING Flower Parade is the biggest event of the year for the district, but there are many more reasons to return!

There is a long list of entertaining exhibitions and events being staged at Springfields Gardens.

## COLOUR BOX

● Saturday, May 13 and Sunday, May 14 is the Colour Box Festival - see page 41

## RADIO SHOW

● Sunday, June 4 - amateur radio show

## FAMILY FUN DAY

● Sunday, July 9 - Tesco family fun day, including knock-out challenge, major raffle, children's entertainment, TV personality, side events, etc. All proceeds from the event go to charity.

## VINTAGE VEHICLE

● Sunday, July 23 - Vintage Vehicle and Classic Car Show - see page 40.

## FLOWER SHOW

● Saturday and Sunday, August 12 and 13 - Springfields Flower Show.

This two day East of England gardening showcase will feature a major flower arranging competition with over 200 entries.

Other attractions include -

- flower demonstration by a top international champion and master in floral art;
- BBC Radio Lincolnshire Gardeners' Question Time;
- the National Begonia Area Show; craft and trade stands; full programme of entertainment.

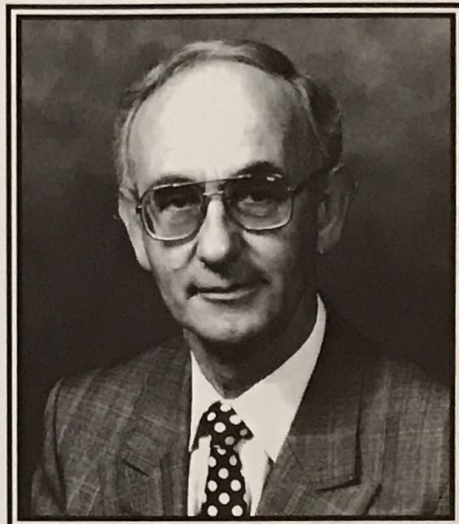
Opens 10am, admission £3.50 (£3), accompanied children free.

## MODEL RAILWAY

● Saturday and Sunday, November 11 and 12 - Spalding Model Railway Exhibition. Numerous model railway layouts, trade stands, demonstrations and entertainment.

## CHRISTMAS GIFTS/CRAFTS

● Saturday and Sunday, November 18



▲ SPRINGFIELDS general manager and flower parade organiser Mr Peter Atkinson

and 19 - Christmas gifts and crafts.

A two day fair with all manner of gifts, crafts. There will be working demonstrations, children's entertainment, etc.



## Springfields in summer



# Dedicated collectors of vintage and classic cars

**T**HEY forego comfort for golden age style - they're dedicated collectors of vintage vehicles and classic cars!

And many of them are brought together at Springfields' Vintage Vehicle and Classic Car Show - held this year on Sunday, July 23 (10am to 5pm).

This is the 13th Springfields' Vintage Vehicle and Classic Car Show and, new for 1995, this year incorporates a classic car auction.

There will be over 400 cars, commercial vehicles, motorcycles, engines, tractors, etc - as well as a fantastic line up of entertainment to keep the whole family happy.

This includes mini quad bikes, Punch and Judy shows, autofumble, trade and craft stands, children's entertainment - in addition to Springfields Gardens.

Two enthusiasts who are familiar with the show are Steven Pinfold of Market Deeping and Ian Day of Gedney Hill.

Ian bought his MG in 1985 and spent the first 15 months restoring it - at a cost of £2,000 to buy and restore.

Ian has owned his 1977 GT for less than a year and before that had an MG Midget.

Like MG owners everywhere, Steven and Ian are proud owners of their cars and take great care of them.

Made for drivers not motorists, these reliable and sporty cars will be going strong for many years yet!

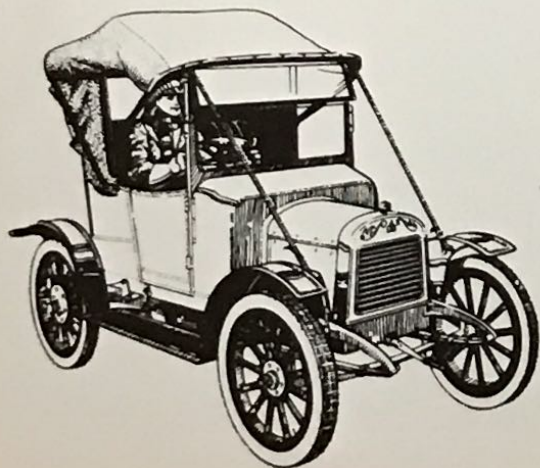
● Admission to the show is £3.50 (£3) and accompanied children are free. There is a special rate for party bookings. Admission price includes free admission to classic car auction and gardens.



● IAN Day, happy behind the wheel of his MGB GT. (LC141/30)



● ABOVE: Steven Pinfold and his pride and joy, an MGB GT! (LC137/9)



# If you go down to the woods today...

41

**SPRINGFIELDS**  
WORLD OF FLOWERS **95**

...Or Springfields Exhibition Centre!

**W**HEN Colour Box brings out a new figure in their delightful range of miniatures, one Spalding family has to buy it four times over!

The Marks family members are all keen collectors of Colour Box, and all four children have to have whatever has just been brought out so there is no squabbling over who it belongs to!

Virtually every surface in their house is given over to their collection which, after six years, is now in excess of 500 miniatures.

Mum Mary said it all began when the children - Kirsty (15), Gemma (13), Lindsay (10) and Peter (6) - spent some of their holiday spending cash on a miniature animal each.

When they returned home, Mary discovered that J T White in the town stocks the Colour Box miniatures - and so began a family passion!

Their collection includes dragons and wizards (Gemma's particular interest), rows of miniature teddies in charming costume, every animal you can think of and the special pieces brought out for Colour Box Club members.

Each miniature is modelled on an original plush teddy bear, and the company has brought out a replica range of plush bears - so the family has a small collection of those too!

The company was started by Peter and Frances Fagan after they fell in love with four antique teddy bears they discovered in a shop in Belgium.

Peter creates the models and Frances finds the right clothes and writes the individual bears' life stories which accompanies each miniature.

The Marks family has become involved with the company in a number of ways. One of the Colour Box bears is modelled on an old teddy discovered in a dustbin at the primary school Peter attends.

Called St Norbert's after the school, the bear was launched in Spalding - and every child in the school received a copy.

Kenny from Kensington bear was named by Mary at a Colour Box festival in Kensington, and at the same event Mary found the perfect bonnet and dress for Prudence bear.

Mary says: "It's a club that wants collectors to get involved. I have never

experienced it with any other.

"Maybe it's because teddy bears are such a common bond with everybody."

It was while they were launching St Norbert's bear that the Fagans decided Springfields' Exhibition Centre would make an ideal venue for a Colour Box festival.

- The Colour Box Collectors event will take place at Springfields Exhibition Centre the weekend after Spalding Flower Parade, on Saturday and Sunday, May 13 and 14 (10am to 5pm).

Outside events include a vintage fairground, clay pigeon shooting with laser guns, and much more.

Inside the exhibition centre there will be stands selling Colour Box products, including plush bears, jewellery, china etc - and a chance for collectors to 'swap and

sell' pieces.

Part of the proceeds from the event will be going to the SOS charity.

- **RIGHT: The Marks children: from back - Gemma, Kirsty, Lindsay and Peter with their collection of plush bears.**



● **JUST a small part of the collection! Keen collectors are (from left) Gemma, Lindsay, Peter and Kirsty Marks.**

**'Teddy bears are such a common bond with everybody'**



# We Care ....

## THE BANCROFT Residential Home

Long Sutton, Lincolnshire

A Fully Registered and Highly Recommended Home For The Elderly

- ★ Ground floor facilities
- ★ Landscaped gardens
- ★ 24-hour care
- ★ Superb trained staff
- ★ Hairdressing, Optical services etc
- ★ Entertainment and Outings arranged

A WARM, FRIENDLY HOME ENVIRONMENT

Tel: (01406) 362734

Mr Richardson on (0831) 837370

## TWO TREES REST HOME

A Small Family Run Home for  
12 Registered Residents.

Pinchbeck

Tel:

(01775)

760182



## THE LEONARD CHESHIRE FOUNDATION

HOVENDON HOUSE,  
FLEET, SPALDING,  
LINCS. PE12 8LP

## RESIDENTIAL NURSING HOME

Offering Choice of  
Opportunity to People  
with Disabilities

Tel: (01406)  
423037

6r3838

SHAW-LINC



## VOCATIONAL TRAINING CENTRE

5 ENTERPRISE WAY, SPALDING,  
PE11 3YR

TEL: (01775) 712414

FAX: (01775) 712525

NATIONALLY RECOGNISED  
QUALIFICATIONS GAINED  
WHILST PROVIDING A  
COMPREHENSIVE PRINTING  
SERVICE FOR THE LOCAL  
COMMUNITY  
(PLEASE CALL OR VISIT)

2014M

# THE ORDERS OF ST JOHN TRUST

Lincolnshire Homes



## SOUTH FIELD HOUSE

WOOLRAM WYATE, SPALDING PE11 1PS

## GROUND FLOOR ACCOMMODATION FOR 36 RESIDENTS

Residential and Respite Care  
Quiet residential area within one  
mile of town centre

For further details contact  
Mary Dixon, Home Manager,  
telephone 01775 724612

## Belonging in the local community

For some people the decision to go into residential care is the hardest they ever have to make, while for others it comes as a welcome relief. Whatever people feel about their care in old age, the philosophy of the St John Trust is to regard each person as an individual to be treated with dignity and respect.

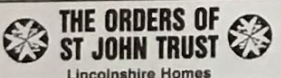
Three years ago in a radical shake up of residential care for the elderly, the Orders of St John Trust took over the

management of 16 Lincolnshire County Council's residential homes. The move made it the largest organisation in the county caring for this age group.

Roni Douglas, general manager for care services, says: "We subscribe to the view that people should be given a choice about the way in which they live, how the home is run and to have a way of life which is special to them. Our 600-plus residents are all individuals with their own needs and we try to go some way to meeting these needs. We are working towards improving quality of life."

Staff are committed to their work. They care about their residents and every effort is made to try to make the homes as homely as possible. Residents are encouraged to keep up their hobbies and interests and to go out as much as possible to clubs, churches, hairdressers, library and shops and to visit family and friends. Maintaining feelings of dignity, independence and self-esteem are among the Trust's highest priorities.

For more information about the St John Trust call ...



Lincolnshire Homes

Patron: Major General the Duke of Norfolk,

KG, GCVO, CB, CBE, MC, DL, KM

## DIGBY COURT

Christopher's Lane, Bourne, Lincs PE10 9AZ

Residential Home for the Elderly

A warm and friendly home that generates a

cosy atmosphere

Double and single rooms

TV Lounges, Tea-making facilities

Library

Trolley Shop

Home-cooked Food

24-hr night and day care, emergency bell call

system

Trained staff

Chiropodist and GP visits

Visiting hairdresser, Home minibus, Respite

stays

Day Care

For further information and brochure contact:

Margaret Hurst, Home Manager,

Janice Lawton, Administrator, on 01775 422035



Lincolnshire Homes

## PATCHETT LODGE

STUKELEY ROAD, HOLBEACH

Our philosophy is shared commitment to

care which provides the individual with:

Choices - Rights - Dignity

Independence - Fulfilment - Happiness

We provide high quality, high

dependency day care, short-term respite

care and permanent residential care. All

provided by experienced, dedicated and

qualified staff

ALL GUESTS RECEIVE INDIVIDUAL

CARE PLANS

All enquiries to

Agnes Grummitt, Home Manager

01406 422012

6r2443X

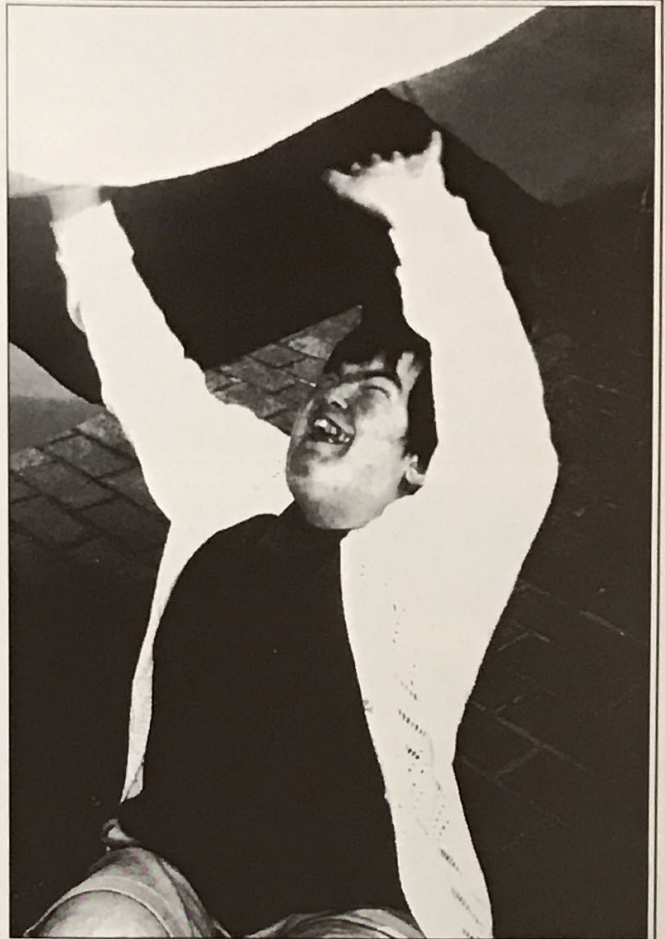


## MULBERRY TRUST

We care for people in the community who have learning disabilities.

- Long and Short Term Care
- Day Care Services
- Community Teams

If you would like further information,  
please contact  
Mark Dibble on 01775 711551



## HOLBEACH HOUSE NURSING HOME

FLEET ROAD, HOLBEACH

With historical character and well tended safe, secure gardens this home for the elderly infirm, specialises in caring for those who need help with confusion, dementia, difficult behaviours and Alzheimers Disease.

We provide short or long term stays, with an individual programme of care from our specialist nursing staff and 24 hour care team in a friendly supportive environment

Ask for Home Manager Claire Smart on Tel: 01406 490425

Interested in a career in caring? Enquire about full and part time employment opportunities with training in a leading care organization

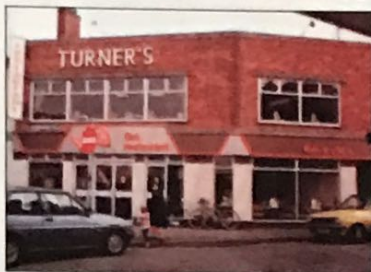
## TURNERS FISH RESTAURANT

New Road, Spalding. Tel: 01775 722502

1st Choice for **FISH & CHIPS**

Seating for 140  
Bus Parties catered  
for  
Fast Take-away  
Service

Open Tues, Wed, Thurs,  
Fri, Sat 11 am-11 pm  
Also Flower Parade  
Sunday 11.30 am-6 pm



1572M



**NEW! SPALDING TROPICAL FOREST & ROSE COTTAGE WATER GARDEN CENTRE**  
Relax and stroll through the largest Tropical forest display of it's kind in the British Isles.  
Also the areas award winning water garden centre.  
Large childrens play area  
Coffee shop  
Disabled Access  
Picnic Area  
Open 7 days 10-6 Summer  
10-Dusk Winter  
Entrance charge to Tropical Forest only  
Something for all the family  
Rose Cottage Nursery and Aquatic Centre  
Glenside North  
Pinchbeck, Spalding

2268M

Discover



The  
**Butterfly &  
Falconry Park**



Phone  
(01406)  
363833

NEW FOR '95  
Animal Magic  
Dog Display  
Team  
performing  
every Sat/Sun  
afternoon

LONG SUTTON (JUST OFF A17) LINCOLNSHIRE

HUNDREDS OF FREE FLYING EXOTIC BUTTERFLIES IN ONE OF  
BRITAIN'S LARGEST WALK-THROUGH TROPICAL HOUSES  
FALCONS, HAWKS, OWLS, VULTURE IN FALCONRY CENTRE  
LIVE FLYING DISPLAYS 12 NOON & 3pm EVERY DAY IN THE  
ATTRACTIVE PARK

Playground  
Animals  
Mouse House  
Nature Trail

Restaurant, Picnic Area, Gift Shop  
Open 7 days 10am-6pm  
March 25th to October 29th

IGUANA DEN &  
SPECTACULAR  
LEAF CUTTING  
ANTS AT WORK

...The Place to be Seen

FAMILY TICKETS AVAILABLE



"EXCITING

FREE PARKING AND ENTRY  
TO VISITORS CENTRE  
ADMISSION CHARGE TO  
FARM YARD  
AND DEER SAFARI

Nr King's Lynn,  
Norfolk

Follow the brown signs on A149 in Snettisham

**ENJOY**

A GREAT DAY OUT

VISITORS CENTRE (FREE ENTRY)

CRAFT WORKSHOPS • ART GALLERY • GRANARY

CRAFTSHOP • INFORMATION CENTRE • GIFT SHOP

ORCHARD TEA ROOM

THE FARM YARD

FARMYARD FULL OF FRIENDLY ANIMALS

BOTTLE FEED LAMBS, KIDGOATS AND PIGLETS •

COLLECT FREE RANGE EGGS • SHEEP CENTRE •

FARM TRAILS • PONY RIDES



ADVENTURE  
PLAYGROUND

FREE PARKING

GROUP  
BOOKINGS  
WELCOME



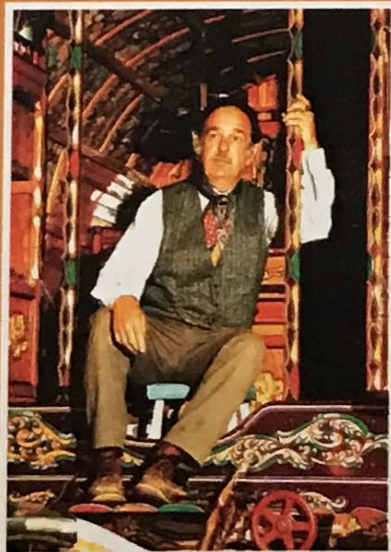
Infoline (01485)  
542425

## GORDON BOSWELL ROMANY MUSEUM

Gordon sat in  
the front of  
one of his  
Romany  
Vardo's

Clay Lake,  
Spalding, Lincs  
PE12 6BL

Tel:  
(01775)  
710599



## Boston - The Original!

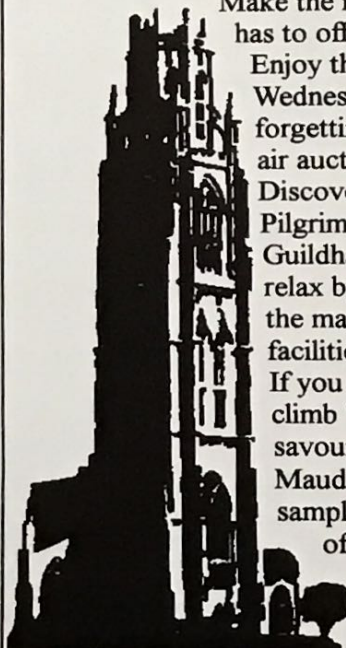
Make the most of what Boston  
has to offer.

Enjoy the bustling market on  
Wednesday and Saturday, not  
forgetting Wednesday's open  
air auction.

Discover the legacy of the  
Pilgrim Fathers in the  
Guildhall Museum then  
relax by taking advantage of  
the many sports and leisure  
facilities available.

If you are feeling energetic  
climb 'The Stump' and  
savour the view or visit the  
Maud Foster Windmill and  
sample the delicious taste  
of stone ground flour.

For further information  
contact the Tourist  
Information Centre,  
Blackfriars Arts Centre,  
Spain Lane, Boston,  
Lincolnshire PE21 6HP  
Tel: 01205 356656



**BOSTON**

# ROGER TUBY FUN FAIR

WITH NEW RIDES ON NEW SITE  
ON THE VICTORIA STREET CAR PARK,  
SPALDING

Thurs, May 4th 6.00pm-10.30pm  
Frid, May 5th 6.00pm-10.30pm  
Sat, May 6th 10.00am-10.30pm  
Sun, May 7th 10.00am-10.30pm  
Mon, May 8th 10.00am-10.00pm



SEE YOU THERE

2213M


LLANELLI

## FLOWER FESTIVAL

Gwyl Flodau Llanelli  
at Peoples Park, Llanelli

Saturday 2nd September &  
Sunday 3rd September 1995

Two day floral and family  
entertainment spectacular

LLANELLI BOROUGH COUNCIL  PRESSING FORWARD

Open to the public  
Saturday 12noon - 7pm  
Sunday 10am - 5.30pm



Hens, Calves, Pigs,  
Guinea Pigs, Rabbits  
Children's Birthday Parties  
on request  
Partridges, Pheasants  
Tea Room  
Sheep  
Adventure Playground

Admission Charged

Open 7 days a week 10 am-6 pm (last entry 5 pm).  
Free Car Parking

ANCHOR LANE, INGOLDMELLS, SKEGNESS.  
TEL 01754 872267; 873351

5m1576



The Reverend Tony Clements  
is pleased to welcome visitors  
to his unique nursery.

CHELSEA SHOW  
GOLD MEDAL 1994

A COLOURFUL spectacle. \*

\* TEA ROOM · GIFT SHOP · TOILETS

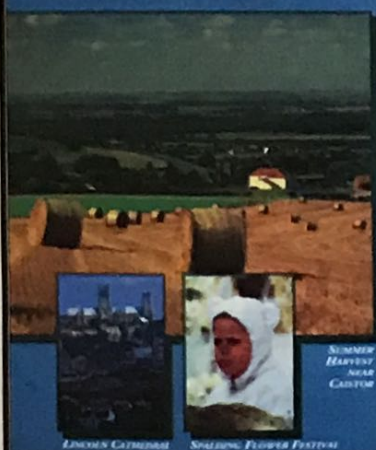
OPEN DAILY 10am - 5pm, February - Christmas. \*

\* ADMISSION FREE

Terrington St. Clement, Kings Lynn, Norfolk PE34 4PL  
Beside the A17, 5 miles west of Kings Lynn. Tel: 01553 828374

## IMAGES OF LINCOLNSHIRE

A YEAR IN THE LIFE OF AN ENCHANTING,  
UNDISCOVERED, RURAL COUNTY.



IMAGES OF LINCOLNSHIRE

YELLOWBELLY VOL ONE. 80 mins

As shown on C4. A year in the life of

Lincolnshire rural folk (Yellowbellies)

YELLOWBELLY VOL TWO. 80 mins

Yellowbelly women, the Good Old Days

YELLOWBELLY SET

AMAZING CHARACTERS - LINC'S

£14-00

£14-00

£14-00

£25-00

£6-00

## SPALDING FLOWER PARADE: THE VIDEO and OTHER DELIGHTS OF LINCOLNSHIRE 1994.

MADE BY AWARD WINNING LOCAL COMPANY.  
1,000's ALREADY SOLD

"IMAGES OF LINCOLNSHIRE". 65mins.

A year in the life of the county featuring SPALDING FLOWER PARADE, Lincoln Cathedral and Castle, Boston, Skegness and a year in the life of the county's villages.

£12.99 AT LINC'S, STORES OF WH SMITHS, AND MOST GOOD LOCAL BOOKSHOPS, or from PRAXIS STALL AT SPRINGFIELDS on PARADE WEEKEND (along with other items).

MANY OTHER TOP LOCAL VIDEOS, AS SHOWN ON TV - SEND FORM OR WRITE.

MAIL ORDER FORM: PLEASE TICK VIDEOS REQUIRED.  
ALL PRICES INCL P & P, 7 DAY DELIVERY

NAME .....

ADDRESS .....

POST CODE .....

I wish to pay by cheque/p.o./Access/Visa (please delete as appropriate)

IF PAYING BY CREDIT CARD:

My credit card no. is..... EXPIRY DATE.....

Signature.....

SEND TO:  
PRAXIS FILMS  
LTD, PO BOX 290,  
MARKET RASEN,  
LINC'S,  
LN3 6BB. OR  
PHONE  
01472 398547

# canton city

廣東城

Fully Licensed Cantonese Restaurant

## HOT BUFFET

(35 dishes)

Sunday Lunch £6.90

Wednesday Evening £7.90

Children under 10 and OAPs 1/2 Price

We guarantee the best quality and value

## NEW TEMPTATION

3 course set meal only

£9.50 per head

Including crispy aromatic duck

50 NORTH STREET, BOURNE, Lincs.

Tel: (01778) 393636

7/2830

## FISHERMANS ARMS

Delightful Riverside Setting

- ★ Beer Garden
- ★ Traditional Ales
- ★ Bar Snacks
- ★ Evening Meals
- ★ Sunday Lunches
- ★ Pool Table and Games

Touring Caravans Welcome —  
Ample Parking

ANGIE & COLIN

Pode Hole, Spalding, Lincs.

(01775) 761299 7/3008x

## THE CHEQUERS

HIGH ROAD, WESTON Nr SPALDING

Tel 01406 370407

## HOME COOKED MEALS AND SNACKS

## A LA CARTE EVENING MENU

## 3 COURSE SUNDAY LUNCH

(bookings advisable)

Families and Children Welcome

Large Garden and Car Park

Caravans Welcome.

Coaches by prior arrangement.

5m1576

## SPRINGFIELDS RESTAURANTS

(01775) 724405

## SPRINGFIELDS RESTAURANTS COMPLEX

Situated just past main entrance Camel  
Gate and opposite Hortico Bulb Shop.  
Open all day for Licensed Bar and Hot  
Food, Tea, Coffee, etc.

7/1575

## WE ARE 'AT YOUR SERVICE'



## WISBECH BORDER COLLIE RESCUE

Always have dogs needing new homes and we also offer help.

If you have a problem contact us first, as we know Border Collies.

Remember... a dog is for life and Border Collies can live for 15 years.

For details on the dogs phone

(01945) 773942 5m1575

## WHITE HILL FARM

DRIED FLOWERS - BULBS  
HEATHERS - SHRUBS  
BEDDING PLANTS  
FRESH VEGETABLES  
WIDE SELECTION

Pots, Bird Baths, Garden  
Ornaments at very, very  
reasonable prices.

Casual Country Clothes

WISBECH ROAD, LONG SUTTON.

Tel: (01406) 364677

## The Black Swan

NEW ROAD, SPALDING

Meals available seven days a week.

Cosy lounge and comfortable Restaurant.

A la Carte Menu available evenings.

Vegetarians catered for.

## SUNDAY SPECIAL

3-course Sunday Lunch including Coffee

£6.95 PER HEAD

Bookings advisable

☎ (01775) 722115

## SPALDING FLOWER PARADE ON VIDEO

Recapture the spectacle of  
the 1995 Flower Parade on  
video for £15.00 (includes  
packing and postage)

To order your copy call

## VPR VIDEO

Tel: 01775 710564

Allow 21 days for delivery

7/2906X

## IMPORTANT NEWS FOR EVERYONE!

Phone Call Carpets  
offer great choice  
AND great value.

Choose your carpets in the  
comfort of your own home.



Also  
carpet and  
upholstery  
cleaning.

Tel:

(0406)

364900

7/4095 ©WVN

Value-for-money Meals

in pleasant  
surroundings

## HOP-IN RESTAURANT

- Morning Coffee
- Afternoon Tea
- Traditional Roasts ● Snacks
- Seating for 120 people
- Party bookings by arrangement

BAR OPEN EVERY LUNCHTIME

Open 7 days 9.30am-5pm

WESTON (A151)  
SPALDING, Lincs.  
FO406/310242



**BAYTREE**  
a world of gardening

## P. D. TODD

GARDEN AND HORTICULTURAL  
MACHINERY SPECIALISTS

Distributors for  
Masport-Morrison  
Mowers and  
Cultivators



Area Distributor  
for FERRARI CULTIVATORS

Most leading makes of garden  
machinery available

Dealers for STIHL Chainsaws  
and Brushcutters



Tel:  
01406  
422118

204 BOSTON  
ROAD,  
HOLBEACH



2m/9616

## JIM'S MOTOR REPAIRS

Group Four MoT Station

- ★ All MoT Repairs Diesel or Petrol
- ★ Car Servicing
- ★ Hot Engine Wash
- ★ Computerised Cryton Tuning  
(adaptors for diesel engine)

SATURDAY MORNING MoT'S  
WITH CUSTOMER'S  
ASSISTANCE

Open Mon-Fri 8 am-5.30 pm

Sat 8 am-12.30 pm

Closed 1-2 pm Lunch

Spring Gardens, Spalding

For MoT Appointments:  
(01775) 724039

# M MORRISS & MENNIE

ESTATE AGENTS

EST. 1894  
FOR  
TODAY'S  
PROPERTY  
MARKET

## THINKING OF MOVING TO SOUTH LINCOLNSHIRE?

We have a Wide Selection of Brand New  
and Resale Properties.

Call NOW for details.

**Tel: (01775) 767575**

Open 7 days a week.  
Weekdays until 7 pm.

7r3008x



ESTATE AGENTS

# LONGSTAFF

Est 1770

Specialist Departments including:-

RESIDENTIAL · COMMERCIAL · AGRICULTURAL ·  
SURVEY & VALUATION · AUCTIONS · LETTINGS &  
MANAGEMENT · MORTGAGES & INSURANCE

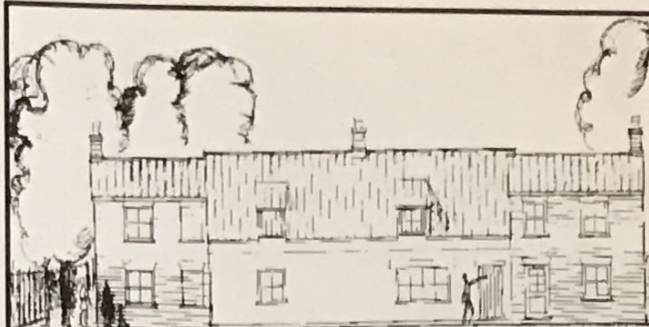
Serving the local community for over 200 years

SPALDING 5 New Road Tel: (01775) 766766

HOLBEACH 2 West Street Tel: (01406) 422760

Mkt DEEPING 8 High Street Tel: (01778) 342466

10c2294x



A superb new development of 4, 2,  
bedroom Terraced Houses with Garages  
and Gardens

Overlooking Grasslands to Gosberton  
manor and within walking distance of  
the village centre

*from £37,500*

2098M

NESTWOOD HOMES



The Cedars, Weston Hills. Tel: John Shephard 01775  
722762 or Munton & Russell 01775 722475, 01406 426274



from  
**£87,750**

For illustration purposes only  
15/2/95

Select your choice from our superb  
range of New Detached Properties situated  
in the popular South Lincolnshire market towns  
and village of Long Sutton, Holbeach and Lutton

## TRADITIONAL NEW HOMES

Built by National House Building

Council Award Winners

**PRICE RANGE**

**£55, 500 TO £90,000**

**Ely** QUALITY  
HOMES

Why not order your  
free fully detailed  
Brochure today?

**ELY QUALITY HOMES TEL (01406) 370483**  
HIGH ROAD · WHAPLODE · SPALDING · LINCS · PE12 6TG

1827MMQ

# World of Gardening

Baytree Garden Centre and Nurseries, off A151, Weston, nr. Spalding



BAYTREE Garden Centre and Nurseries 'World of Gardening' was started 25 years ago this September by an enterprising young couple, Reinhard and Yvonne Beihler.

It has gone from strength to strength and has evolved into one of the largest crowd pulling garden centres in East Anglia, winning such prestigious awards as Garden News readers' Garden Centre of the Year, top golds for displays at East of England shows, Garden Centre Associations award for having the best houseplant in the country, plus many more.

The 35-acre complex has something for everybody, making a complete day out for the family, with lots of animals and a pet's corner to entertain the children.

Restaurant and disabled facilities available.

Open from 9 am to 6pm, every day.

## A small example of suppliers and what you can find at Baytree...

**KEITH BUTTERS LIMITED**, Spalding is proud to be supplier of top quality house plants to Baytree Garden Centre. Our partnership over many years has helped Baytree become one of the leading Garden Centres in the country, supplying a wide range of exotic plants, as well as weekly "Value for money promotions".

**GARDMAN LIMITED**, based at Northgate, Pinchbeck supplies Baytree Garden Centre giving the discerning gardener comprehensive range of top quality traditional wall baskets, hanging baskets, recycled fibre liners, attractive brackets designed from wrought iron that are the finest in the industry. Also, you will find moss and garden feeds to help your plants flourish.

Visit the **MOWER CENTRE** at Baytree for one of the largest displays of lawn mowers and garden machinery in the area. The range consists of electric and petrol mowers, strimmers, hedgecutters, shredders, tillers, vacuums, cycle and battery powered ride on toys. The shop can also service and repair. For more information call (01406) 371669.

If you think it is all gardening at Baytree you are wrong. Each year something else is added including:

**LEISURE WORLD** - a large display of conservatories, garages, garden buildings and greenhouses. Garden buildings give your home character, precious space and increase its value. Prices to suit all pockets. The conservatory prices will certainly take some beating. Tel (01406) 371674.

Tired of Craft Fayres, entrance fees, too many bought in goods? Then why not visit **BAYTREE CRAFT CENTRE**, the areas largest permanent display of quality hand made goods produced by local crafts people, run by experienced staff.

Beautiful crafts include stained glass, wooden book ends and fabric craft. Open seven days a week - Demonstration days.

Now open at Baytree is the **BARBARA BATTERSBY'S BAKEHOUSE LIMITED**, from Whisby Way at Lincoln specialising

in organic cakes such as delicious carrot cakes, sandwich cakes, rich fruit cakes, date, walnut and Celebration cakes, scones, truffles etc, that are sure to make your mouth water. You can purchase these Tuesday to Sunday inclusive.

Whilst you are at the Garden Centre make sure you visit the **OWL CENTRE**, and enjoy the unique interactive experience that will appeal to all the family. It is one of Britain's largest collections of owls from around the world. Opening times 9.30am-5.30pm. Flying times whatever the weather March to October 11am and 3pm plus. Admission £1.80 OAPs and children £1.30.

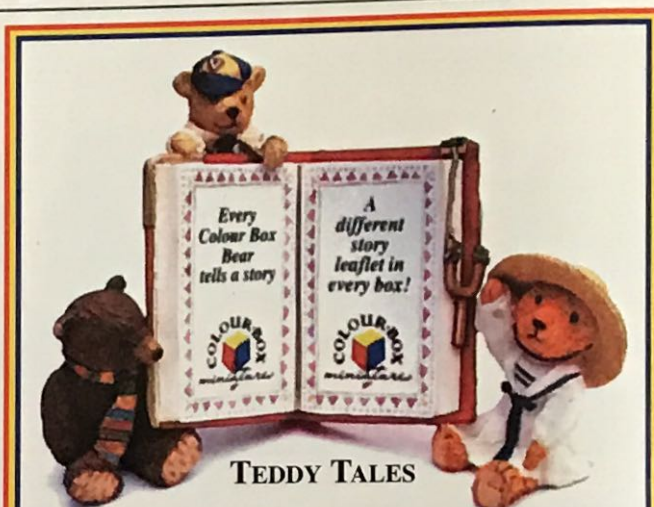
A few years ago the **Hop** in a fully licensed restaurant was opened. It caters for everything from a well earned cup of tea to a full lunch. The Restaurant always takes care in choosing its suppliers among them:

**A.W. JACKSON AND SONS BUTCHERS** and **Pie Makers** a family run business established 45 years ago. Mr Jackson supplies the restaurant with fresh sausages, bacon, cornish pasties, sausage rolls, scones and pies. You can also buy the products or order for your special occasion from their shop at 18 West End, Holbeach.

Another well established and extremely popular supplier to the restaurant is **BUN'S BAKERY** with a shop at 19 Station Street, Spalding. Bun's Bakery deliver daily, to guarantee excellent quality fresh fruit, pies, cookies and pastries. You are assured exceptional value for money when the supplier is Bun's Bakery.

**BROADVIEW PEELED AND PREPARED VEGETABLES**, Market Lane, Walpole St Andrew is pleased to supply the Hop in with its daily requirements of fresh vegetables. It also gives a range of well as part fried chips. Prices are competitive and service and delivery is second to none.

## BAYTREE GARDEN CENTRE nurseries



## The Magic of Colour Box Available at:

**WHITE'S LEATHERGOODS**

8-11 SHEEP MARKET,

SPALDING, Lincs

TEL: (01775) 722024

**THE CHINA CABINET**

5 CHURCH STREET,

BOSTON, Lincs

TEL: (01205) 363128

3756M



# THE COLOUR BOX FESTIVAL

HELD AT SPRINGFIELDS

13-14 MAY 1995

10.00am - 5.00pm

## Outdoor Attractions

- ❖ vintage Ferris wheel
- ❖ children's rides  
including chairplanes,  
swingboats and train  
rides
- ❖ coconut shy
- ❖ hook the duck
- ❖ trapeze / acrobatic  
displays
- ❖ Circus workshop  
includes juggling,  
unicycling and  
tight rope walking
- ❖ clay pigeon shoot by  
laser gun
- ❖ Springfields garden  
treasure hunt



## Indoor Attractions

- ❖ modelling classes
- ❖ illustration classes
- ❖ Teddy bear's tea party
- ❖ charity auction in aid of  
SOS on 14 May
- ❖ charity raffle in aid of  
SOS, main prize, a  
weekend in Paris
- ❖ personalisation of Colour  
Box pieces
- ❖ many stalls selling  
bears, china and lots  
more
- ❖ celebrity appearance on  
behalf SOS

**The Colour Box Festival Dinner Dance**  
on the evening of 13 May from 7.00pm  
(ticket holders only)

*Everyone welcome. Join the fun of  
The Colour Box Festival*

**For further information please contact:**  
**Fiona Armstrong, Event Co-ordinator**  
**Colour Box Miniatures Ltd., Orchard Estate,**  
**Lauder, TD2 6RH**  
**Tel: 0578 722725**



*The ripest,  
most succulent  
fresh pineapple  
is the  
potted variety.*



Imagine. Perfectly ripe pineapple, fresh and ready to eat anytime, anyday. No planting.

No pruning.

Just pick them at your local supermarket.

