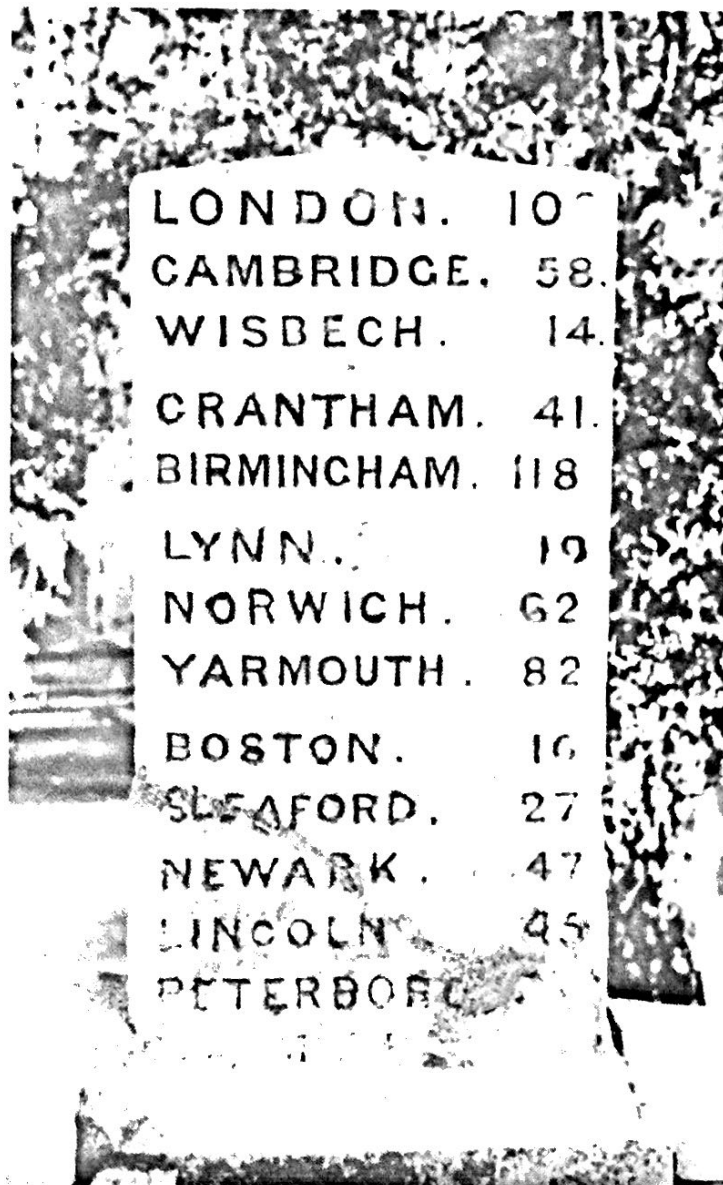


# HOLBEACH

A photograph of a stone tablet with a list of cities and numbers. The text is engraved in a serif font. The list includes: LONDON. 100, CAMBRIDGE. 58., WISBECH. 14., CRANTHAM. 41., BIRMINGHAM. 118, LYNN. 19, NORWICH. 62, YARMOUTH. 82, BOSTON. 16, SLEAFORD. 27, NEWARK. 47, LINCOLN. 45, and PETERBORO.

LONDON.	100
CAMBRIDGE.	58.
WISBECH.	14.
CRANTHAM.	41.
BIRMINGHAM.	118
LYNN.	19
NORWICH.	62
YARMOUTH.	82
BOSTON.	16
SLEAFORD.	27
NEWARK.	47
LINCOLN.	45
PETERBORO.	

# GUIDE

*Presented by*

**Holbeach & District  
Chamber of Trade**

**PROVINCIAL**

**BUILDING SOCIETY**

**DERVENSURE INSURANCE BROKERS**

THE SIGN OF SERVICE AND SECURITY  
WITH

RATES TO PLEASE AND SAVING WITH EASE

**PROVINCIAL**

IS A LARGE NATIONAL BUILDING SOCIETY OFFERING  
A WIDE RANGE OF SAVINGS PLANS INCLUDING A SPECIAL  
SHARE ACCOUNT GIVING EXTRA INTEREST WITH ACCESS  
TO YOUR MONEY

DERVENSURE  
INSURANCE BROKERS

OFFER A FULL SERVICE FOR ALL YOUR INSURANCE  
NEEDS AGENCIES ARE HELD WITH MOST MAJOR  
INSURERS PROVIDING THE BEST POSSIBLE COVER AT  
ATTRACTIVE RATES

INSURE AND SAVE  
WITH

**PROVINCIAL**

**BUILDING SOCIETY**

**DERVENSURE INSURANCE BROKERS**

44 HIGH STREET HOLBEACH TELEPHONE 23340



# E.G. & L.B. MARTIN LTD.

Showroom: ALBERT WALK  
Tel: HOLBEACH 22368/22374



Specialists in Gas, Oil, & Solid Fuel installations.

Stockists of all your D.I.Y. heating and plumbing equipment, water softeners, pumps, radiators, fittings etc.

Take advantage of all EMGAS offers on gas fires, cookers, etc. on display at our showroom. Free quotations given.

## HOLBEACH TYRES

BATTLEFIELD LANE TELEPHONE 23611-22462

*Tyre, Battery & Exhaust Specialists  
For competitive prices, & 1st class service  
by local people for local people.*

Emergency Service after hours: Holbeach 24096  
or Holbeach St. Marks 340.

## E. A. Hanson & Sons



BAKER & CONFECTIONER



BRIDE AND BIRTHDAY CAKE SPECIALIST  
BREAD & CAKES ALL MADE  
DAILY ON THE PREMISES

19 High Street, Holbeach, Spalding, Lincs. Tel: Holbeach 23201

# **NEWS TRAVELS FAST**

*When you buy your daily  
and Sunday papers from:*

**CLAUDE CHAPMAN (NEWSAGENTS)  
13 HIGH STREET, HOLBEACH  
TEL: 23193**

## **WHY NOT ?**

Contact Chris Loweth on Holbeach 22126 for advice on  
your building project - nothing is too small or too large!  
Personal service designed to satisfy.

**LOWETH COWLING DESIGN.  
14 WEST END HOLBEACH. SPALDING LINGS.**

## **DO IT YOURSELF SUPPLIES**

**TIMBER . MOULDINGS . CONTIBOARD . IRONMONGERY  
SAND . CEMENT . GRAVEL . GLASS . BRICKS . BLOCKS  
PAVING SLABS . PAINT . DECORATING SUPPLIES . ETC.**

**OPEN SIX  
DAYS  
AMPLE  
PARKING  
SPACE**

## **HALLS OF HOLBEACH**

**45 FLEET STREET, HOLBEACH.  
TELEPHONE: HOLBEACH 23177**

## INTRODUCTION



This guide has been produced for the residents of Holbeach and District in order that they might better enjoy the facilities and services available in the area. Many changes have taken place over recent years and there is no doubt that the town now faces an interesting and challenging future.

If the heart of a town is its shopping and trading areas, then surely its lifeblood must be the clubs, associations and voluntary organisations. We have attempted in this guide to inform you of the activities that do take place and in each instance we have included the name of the person you can contact if you are interested in joining. We found that new members are always made welcome and we must congratulate the committees and their helpers for their enthusiasm and dedication.

The Holbeach & District Chamber of Trade, whose members have financed the publication of this guide, is determined to see that the people of Holbeach and the surrounding area have a town in which they can justifiably be proud. The services offered by our members are comparable with those found anywhere and the keen but fair and friendly competition for your business ensures that your shopping in Holbeach is not only enjoyable but that you receive 'real value for money'.

Over the next few months the Chamber proposes to run a Miss Holbeach Chamber of Trade Competition and in the Spring of 1982 a Holbeach Shopping Week is planned, when we will also be announcing the Holbeach Shop Assistant of the year. The Christmas lights have for some years now been paid for by our members and we hope that as time goes by we will be able to extend this further.

I would particularly like to thank Junior Chamber, Spalding, who have prepared this guide. Any profits made from its publication are going to their "Operation Link-Up" Fund, which is a project they are organising to raise money for charities for the disabled.

**M. A. Biggadike** -President Holbeach & District Chamber of Trade.

*Whilst every care has been taken in compiling this guide, and the statements contained herein are believed to be correct, the publishers and the promoters of this publication will not hold themselves responsible for any inaccuracies or omissions.*

Text & Advertisements, other than those supplied by the Promoters, typeset on an AM Verityper 580/504 II Computerised Phototypesetter, and printed by:  
**SPEEDPRINT DESIGN, Archway Studio, The Crescent, SPALDING, Lincolnshire, PE11 1AE. Tel: (0775) 2166**

Photographs taken and printed by: BARRIE HOTSON



Stukeley Hall, Old Peoples Home.

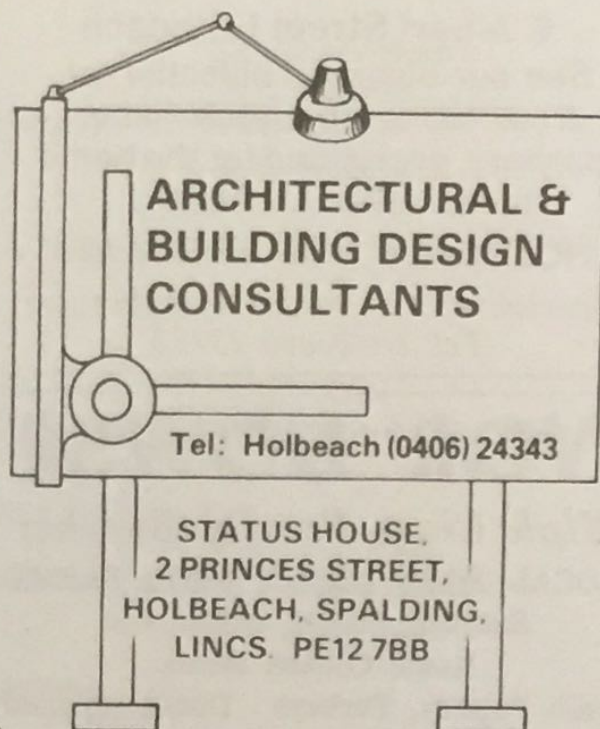
Carters Park, Playing Fields.



# status design

Proprietor: M. R. GLAUSER

BUILDING PLANS  
FOR ALL TYPES OF BUILDING WORK



## SAW & Co BUILDERS

NEW HOMES  
QUALITY  
EXTENSIONS  
N.H.B.C.  
REGISTERED

STOCKWELL GATE  
WHAPLODE  
TEL: HOLBEACH 22152

## ZENITH

### ALUMINIUM DOUBLE GLAZED

*Windows, Patio Doors  
Residential Doors and  
Secondary Double Glazing  
ALSO  
Cavity Wall Insulation &  
NEW White and  
'Warmlined' Windows.*

BARRY SANDERSON  
SPALDING 4746

## JOCELYN DARLOW

6 Albert Street Holbeach

See our beautiful selection of:  
dress fabrics, braids & haberdashery, everything for the home dressmaker.....*ALSO*....

**HOLBEACH HAIR FASHIONS**

*Specialists in all fields of Hairdressing*  
Tel: Holbeach 23152

## DO YOU NEED....

Gardening & leisure products; Pet foods & equipment; Pre packed Coal & Rexco; Paraffin & Calor gas; Fancy goods & gift ware; Fencing panels & creosote; Gas heaters OR even a packet of Jelly Babies? Then you need Limmings, for all these and much more.

**J. W. LIMMING LTD.**

17-25 FLEET STREET, HOLBEACH. Tel: 23307

## IVOR DOWSE

*High Class Family Butcher*

LOCAL MEAT DIRECT FROM FARMS

Sausage, Haslet, Brawn and

Home Cooked Meats.

Fresh Poultry, Turkeys Ducks supplied.

**MEAT FOR THE FREEZER  
AT COMPETITIVE PRICES**

34 HIGH STREET HOLBEACH Tel: 23622

**HIGH-CLASS FRUITERER**

**CHOICE FRUIT  
FRESH DAILY**

**LES. HATTON & SON**

**FRESH  
SALADS DAILY**  
Tel: 23127/23685

**HOLBEACH**

**HOLBEACH MUSIC**



**SERVICES**



**33 HIGH STREET**

**HOLBEACH Tel 22863**

Records, Tapes, Hi-Fi Equipment  
and all accessories.

**GET IT LOCAL**

*A sympathetic and understanding  
FUNERAL SERVICE  
is available day or night in your time of bereavement at*

**A.E. WOOLLEY & SON**

*under the personal direction of Mr Frank Woolley*

19 St John Street, Holbeach.

"Springfield", Fleet Road.

Telephone: 23249

*Memorials in Marble, Granite and Stone*

## HOLBEACH CAMERA CENTRE

35 High Street. Tel: 22236

For: **EVERTHING  
PHOTOGRAPHIC**

Also: **ALL TYPES OF  
FRAMING**

## BURTONS

**HIGH CLASS BAKERS  
& CONFECTIONERS**

**ORDERS TAKEN**

**WEDDING, BIRTHDAY**

**& CHRISTENING**

**CAKES A SPECIALITY**

WEST END  
HOLBEACH  
Tel. 22320

3a THE CRESCENT  
SPALDING  
Tel. 4158



**Local Government:** Holbeach has a Parish Council which controls such places as Carters Park and the cemetery in Park Road. There are twelve councillors and they are :-

*Town Ward*

N. I. Capes  
P. Clements  
T. N. Harrington  
R. Hoy  
A. V. Osmond  
T. G. M. Tyler

*Hurn Ward*

M. Bingham  
J. R. Pearl (Chariman)  
F. J. Powley  
G. W. Sorrell  
Mrs. D. Bridger

*St. John's Ward*

G. E. Barber  
Mrs. K. Flynn  
N. P. Judge

The Clerk is Mr. P. J. Mossop, M.A., LL.B.

Bordering Holbeach is the parish of Fleet, which also has its own Parish Council. There are nine members as follows :-

*Fen Ward*

J. G. Johnson

*Village & Hardgate Ward*

P. J. Barre  
Miss L. J. Bennett  
A. F. Halgarth  
A. R. Morris  
B. A. Paul (Chairman)  
Mrs. J. A. Paul  
H. A. H. Thorold  
H. Waltham

The clerk is Mr. P. J. Mossop, M.A., LL.B.

The District Council for both Holbeach & Fleet is South Holland District Council, whose offices are at Priory Road, Spalding.

**Doctors.** There are two surgeries in Holbeach as follows :-

Dr. Breese }  
Dr. Peter } 19 Barrington Gate, Holbeach (Telephone 22231)  
Dr. Hunter }  
Dr. Deverell } Park Road, Holbeach (Telephone 23288)  
Dr. Price }

**Dentists.** The dental surgery is at 24 West End, Holbeach.

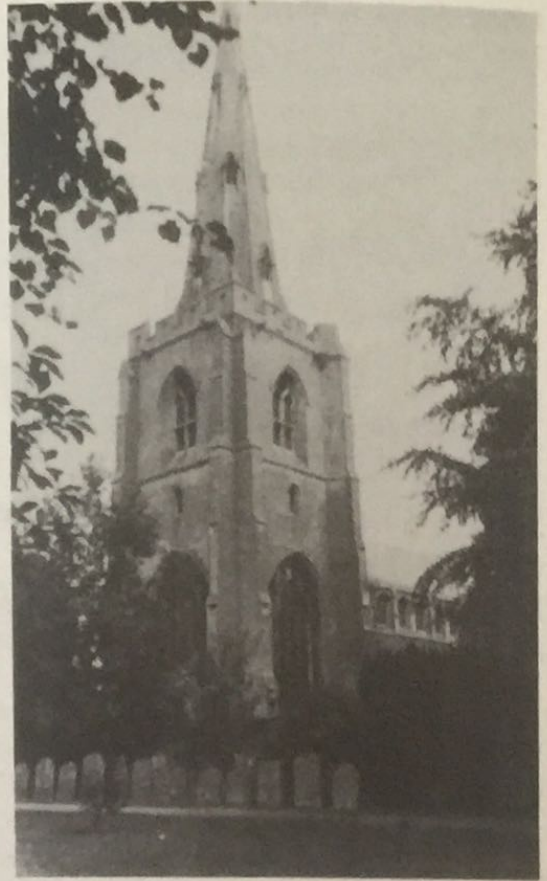
**Optician.** John Stupples, 12 West End, Holbeach.

**Solicitors.** There are two firms of solicitors in Holbeach, they are:-

Messrs. Calthrops, 61 High Street, Holbeach (Telephone 22621) and  
Messrs. Mossop & Bowser, West End, Holbeach (Telephone 22651).

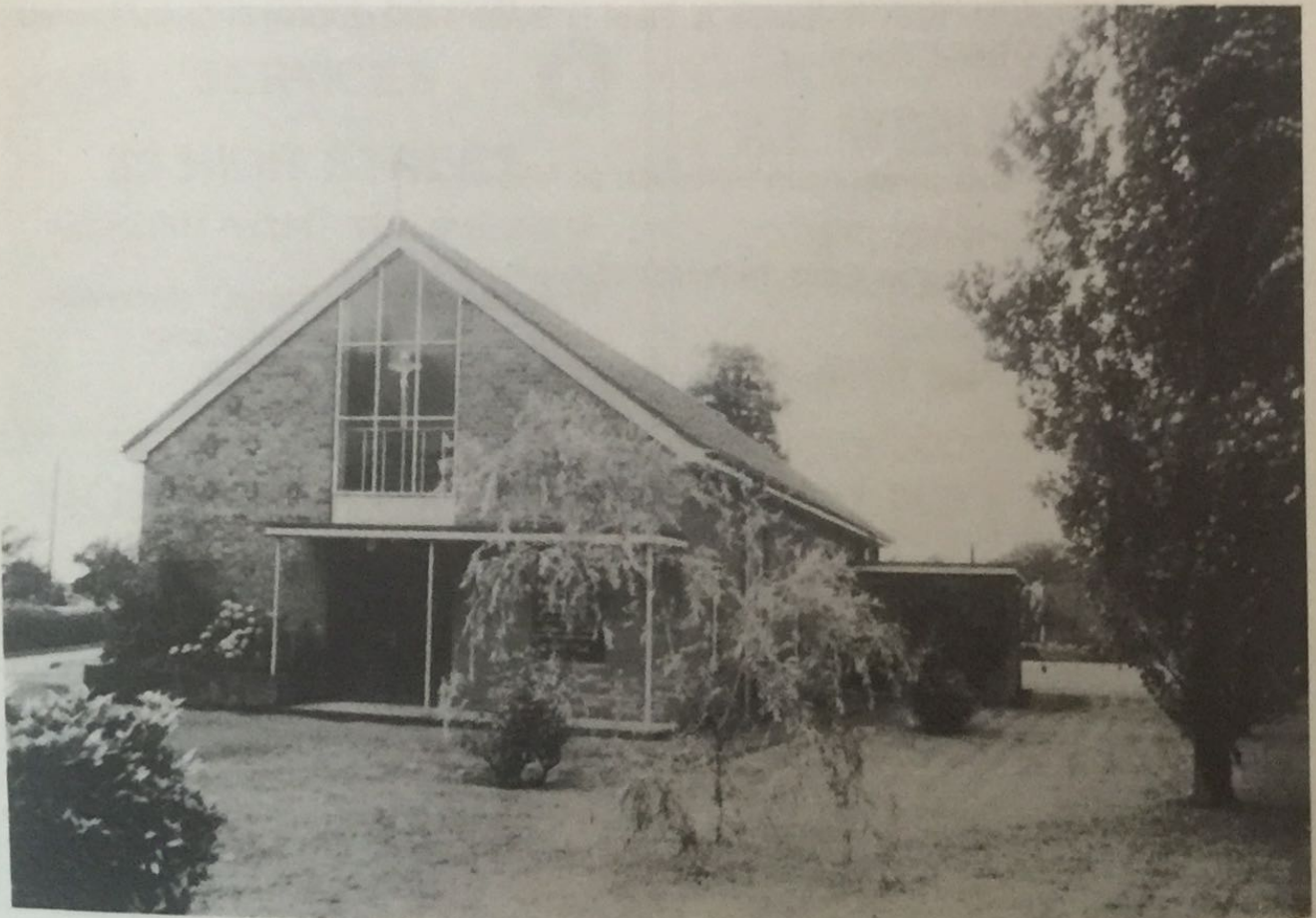
**Police.** The police station is situated in Edinburgh Walk, but due to economic cut backs is not always manned. Enquiries, information etc. can always be dealt with by the Spalding station, telephone Spalding 2233.

All Saints Church



# Ancient & Modern

Church of the Holy Trinity



**The Parish Church - All Saints.** Built on the site of a Norman Church, All Saints dates from 1340 - 1380, with a curious north porch which was probably added about 1540.

In 1669 George Farmer, from whom the school takes its name, founded a school in Holbeach, in a room in that porch. You can still see where the beams for the floor were set into the walls.

Inside - notice Sir Humphrey Littlebury's tomb. He was alive when the church was being built. Also the War Memorials including the large Crucifix.

Apart from that the church is very little altered since it was built, and generation after generation of Holbeach people have been baptised at its font, married there, at first at the door and since 1500 or so at the chancel step, and finally buried from it.

Far and away the oldest building in town, it is in very good repair and continues to bear witness to the faith in which it was built.

Services take place every Sunday, 10.30 a.m. and 6.30 p.m., details of which can be seen on the notice board. Canon C. R. Evans is the 48th Vicar of All Saints and he can be contacted on Holbeach 22185.

**All Saints Church Sunday School.** Held each Sunday from 10.15 to 11.00, in the Church Hall, except for the first Sunday of each month when a family service is held in the Church. Children from 6 years upwards are encouraged to join the school and Mrs. Jean Nicholson, telephone Holbeach 22424 will be pleased to give further information.

**Roman Catholic.** The Church of Holy Trinity on Fleet Road was dedicated in October 1966. Father Patrick Mulligan first came to Holbeach in 1956 and at that time Mass was offered on Sundays in the Reading Room, Church Street. Services are as follows :-

Sunday Mass 10 a.m. and 6.30 p.m. Holy days 9 a.m. and 7 p.m. Baptisms, marriages and all enquiries should be directed to Rev. Mulligan, telephone Holbeach 23036.

**Methodist Church.** There were at one time three Methodist Churches in Holbeach, but only one remains. Built in 1853, in Albert Street, this church is now the focal point of the Holbeach Methodist Circuit. Sunday services are held at 10.30 a.m. and 6.30 p.m. The Sunday School meets in the Barrington Gate Hall at 10.30 a.m. and this is also the meeting place for the two Youth Clubs - Juniors on Monday evenings and Seniors on Friday evenings. The Women's Bright Hour meets each fortnight on Thursday afternoons and there is a Wives and Mothers group which meets every third Monday evening.

The Minister is the Rev. R. Priestley, 22 Barrington Gate, Holbeach (Telephone 23270) and he is also responsible for the Methodist Chapels at Whaplode and Moulton.

Holbeach Clough has a combined Church of England/Methodist Church.

**The Holbeach Baptist Chapel** is situated in Albert Street. Services are held each Sunday at 10.45 a.m. and 6.30 p.m. (3rd Sunday morning of each month is a family service and the 4th Sunday evening is Communion).

Sunday School meets at 10 a.m. each Sunday morning for children from about the age of 3, together with The Bible Class for the over 12's.

There are various activities during the week, including the Jucos and Adventurers (6 - 11 year old) on Monday evenings and The Covenanters (over 12's) on Tuesday evenings. There is a meeting for the ladies on the first Wednesday afternoon of each month and every Wednesday evening a Prayer and Bible Studies meeting is held at the home of one or other of the Church members. Details are available from the Pastor, the Reverend Paul Williams, telephone Sutton St. James 312.



The Meridian Line, Holbeach.

**Schools - Primary Education.** Holbeach Church of England Infants School, High Street, Holbeach. Telephone 22102. Head Teacher, Mrs. M. J. Tilling.

Holbeach County Junior School, Boston Road, Holbeach, Telephone 22397. Head Teacher Mr. K. Atkins.

**Secondary Education.** George Farmer School, Park Road, Holbeach. Telephone 23042. Head Teacher Mr. A. Barker.

Some children attend Spalding Grammar or Spalding High School, after leaving the Junior School.

**Parent Teacher Associations.** There are two associations. The Infant and Junior Schools combine and are supported by the Primary Schools PTA. The George Farmer has its own PTA.

**For the Pre-school child.** Ivaholme Playschool was opened 5 years ago by Mrs. Smith at 38 Fen Road. Helped by her daughter and a rota of willing mothers the school is able to take a maximum of 24 children. They have purpose built accommodation for the 2½ - 5 years children and are open mornings from 9 until 12.

Mrs. M. Gray of 55 Boston Road, has 8 children each morning at her playschool (9 a.m. - 12), which she runs with the assistance of a helper. The children take part in a variety of activities.

**Children's Holiday Playscheme.** In order to provide children with a variety of activities during the long summer holidays, the playscheme was launched and is now very popular with the children. Meetings take place in the Youth Centre during the middle two weeks of August from 10 a.m. to 12.30 p.m. and 2 p.m. to 4 p.m. Sports, film shows, outings, swap shop, talks from visitors and social events take place. Details are available from Mrs. S. Shaw, Telephone, Holbeach 22561.

# The Bell Hotel

21 HIGH STREET, HOLBEACH, LINCS.  
TELEPHONE: 0406 23223.

A small & friendly family business.

ACCOMMODATION  
LUNCHES & DINNERS - à la carte menu.  
REAL ALE



Specialists in providing Bars for Weddings, Shows, & all major functions anywhere  
You will be sure of a good welcome at The Bell Hotel.

## KEN TABOR

*Builders and Decorators*

**Coronation Works**

**13 Fleet Street**

**Holbeach**

**Lincs.**

Telephone 23999



## F.W. ARNOLD

**FAMILY & PORK BUTCHER**



Tel 22092

**HOME MADE HASLETS · PASTRIES AND**

**PORK PIES OUR SPECIALITY**

**12 Albert Street HOLBEACH**

# GOOD NEWS



**TRAVELS FAST!**

and you  
**CAN'T BEAT US**  
for  
**THE BIGGEST  
CIRCULATION  
THE BEST  
NEWS COVERAGE**  
and the

**Best Value in Advertising  
that Money can Buy  
IN HOLBEACH and THE EAST ELLOE**

*The*  
**Lincolnshire Free Press**  
(Tuesday)

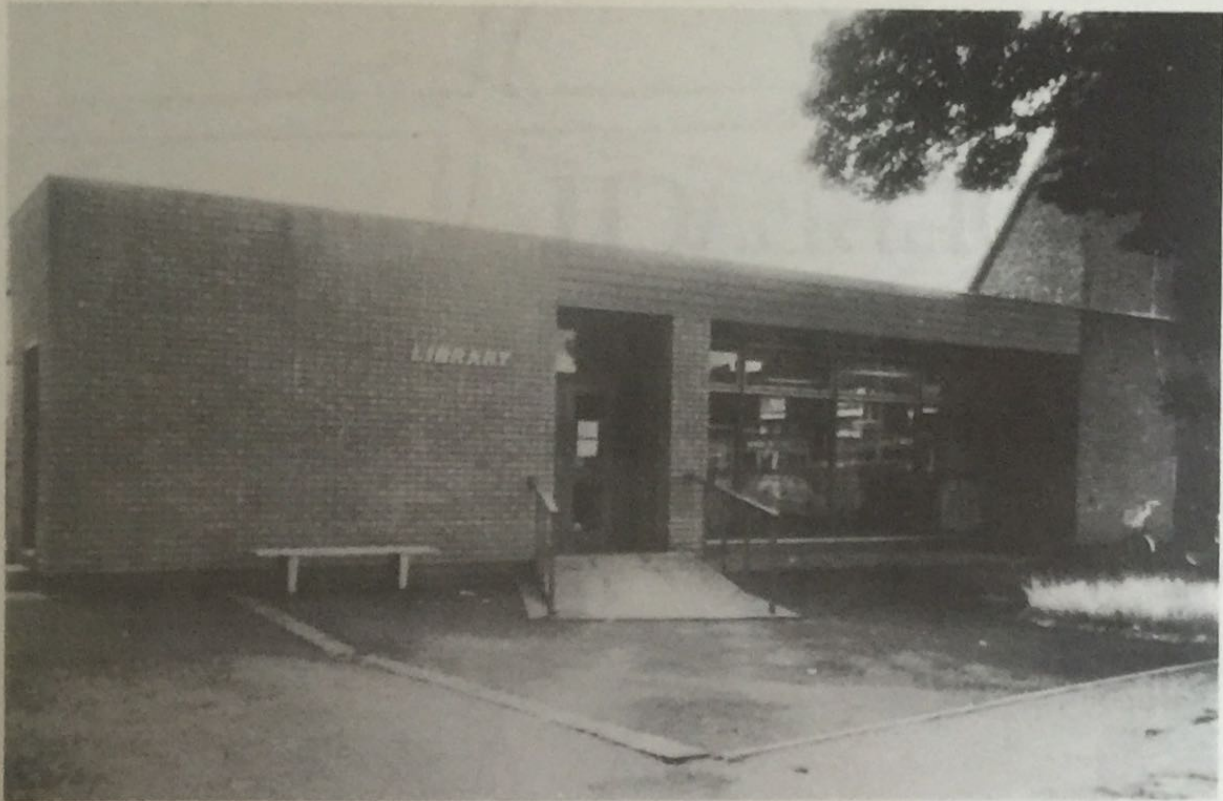
*and*  
**Spalding Guardian**  
(Friday)

*Your Local Newspaper for Local People*

**PRIORY HOUSE, THE CRESCENT, SPALDING. TEL: 5021**

**CLASSIFIED ADVERTISING 5484**

*Place a regular order with your newsagent TODAY*



The Library

**Library.** The Holbeach Library (Telephone Holbeach 22785) in Church Street, has a large range of books to suit all tastes. Opening times are as follows :-

Monday	2.00 - 8.00	
Tuesday	10.00 - 1.00	2.00 - 5.00
Wednesday	10.00 - 1.00	2.00 - 5.00
Thursday	10.00 - 1.00	2.00 - 5.00
Friday	2.00 - 8.00	
Saturday	9.30 - 12.30	

Books may be renewed by either post or telephone but please be sure to quote the name of the author, title and date of last stamp on the label.

**Post Office.** The Post Office is situated in Barrington Gate.

**Bus/Coach Services.** The Lincs Road Car Company operates a bus service through Holbeach (Kings Lynn/Spalding route) service number 505. The service operates approximately every hour throughout the day in each direction with additional service 508 on Saturday mornings. Last bus from Spalding is 21.05 weeknights and 22.40 Saturdays. The Sunday service is more restricted and operates in the afternoon and evenings only. Timetables are available from the Depot in Fleet Street.

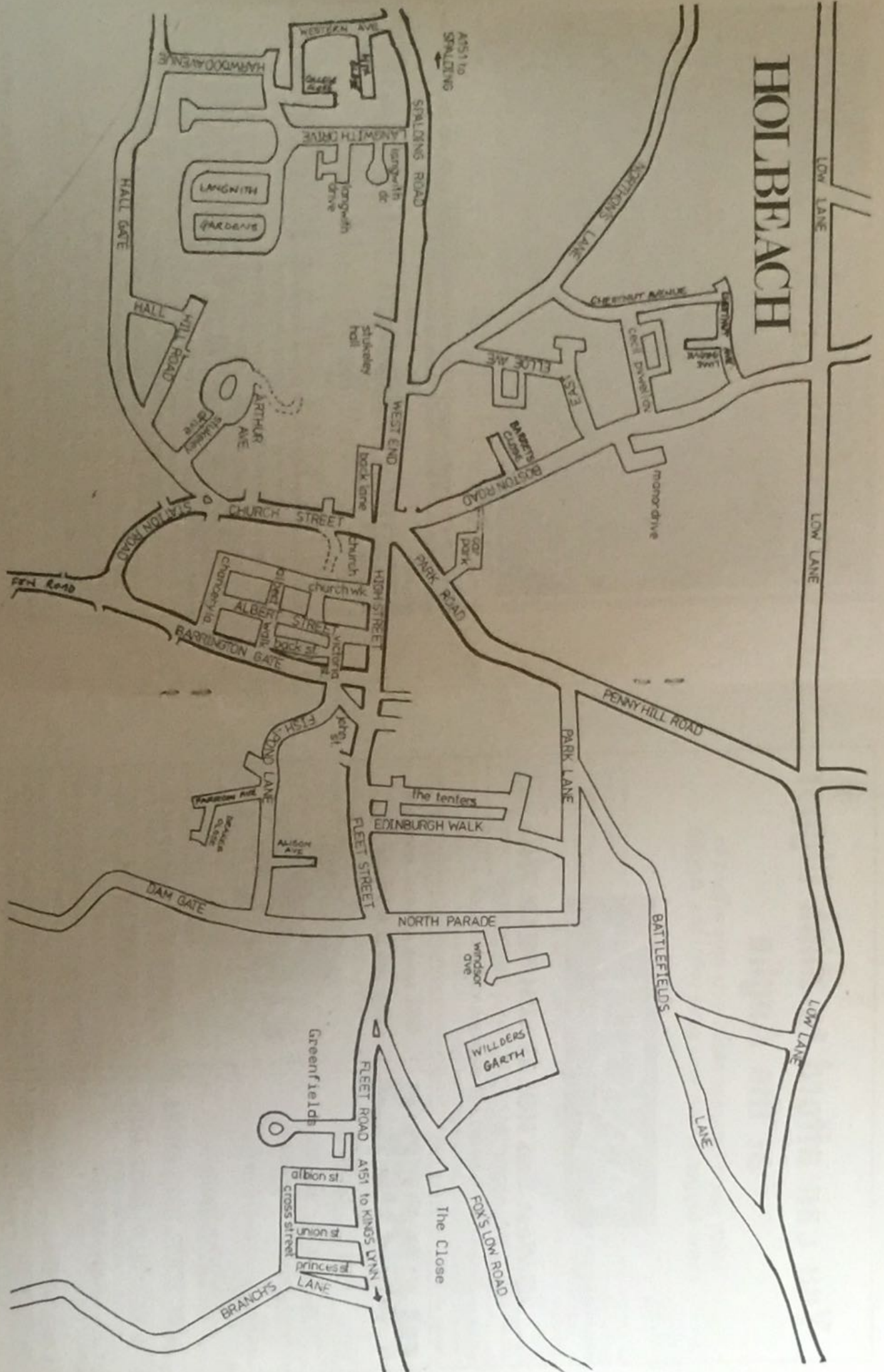
The National Express Service also operates through Holbeach, as follows :-

- Dep. Holbeach 14.43 to Great Yarmouth and Lowestoft.
- Dep. Holbeach 11.40 to Sheffield, Wakefield, Leeds, Bradford.
- Dep. Holbeach 11.40 and change at Sheffield for Darlington and Newcastle.
- Dep. Holbeach 11.22 to Nottingham, Matlock, Manchester and Blackpool.

Confirmation of this and other services can be obtained from the Depot in Fleet Street or by telephoning Lincoln 22255.

**Newspapers** - The local papers serving the Holbeach area are the Lincs. Free Press which comes out on Tuesdays and the Spalding Guardian on Fridays.

# HOLBEACH





# You can afford to think bigger at the Anglia

With good interest rates you can afford to  
think bigger when you save with the Anglia



**3 West End HOLBEACH PE12 7NQ**

Manager: Mr. C.D.Foote Tel:22509

FOR OTHER OFFICES SEE YOUR YELLOW PAGES

## PLEDGER'S

M.H. & G. Smith

Colour T.V.      First Class  
Specialists      Rental Service

T.V. Radio. Electrical Goods.  
Toys & Cycle.

BUY YOUR TOYS FROM  
A REAL TOY SHOP AND  
SAVE MONEY

Long Sutton  
Tel.362381

Holbeach  
Tel.23061

*Will your removal problems  
give you a headache . . .*



CONSULT

## EASTLEA HOUSE REMOVALS

FIRST

We offer an efficient removal service - local and  
long distance at competitive prices.

Eastlea House, Fleet Street, Holbeach  
Spalding, Lincs. Tel: (0406) 23812

**Womens Institute.** The afternoon WI holds its meetings every 2nd Wednesday at 2.15 p.m. in the Church Hall, Church Street. There are about 40 members and a programme of varied and interesting speakers is arranged. New members are always welcome and the ladies feel that this is an excellent way of making new friends. More details are available from the President, Mrs. Ward, telephone Holbeach 22452 or Secretary, Mrs. Coneybeare, telephone Holbeach 23054.

**Womens Institute.** Meetings take place in the WI Hall at 7 p.m. on the last Thursday of each month. New members are always welcome and are able to take part in many activities, traditionally associated with WI. The members are particularly conscious of the role they are able to play in the life of the local community and they are often to be seen helping at the Age Concern Centre, Patchett Lodge etc. A team from the branch recently reached the semi-finals of the Evening Telegraph quiz. Details are available from Mrs. Rita Balderson, Telephone Holbeach 23391.

**Mothers Union.** Members try to contribute to the life of the Church and the community in and around Holbeach and also try to keep in touch with other groups in this country and overseas. They meet in the Church Hall, Church Street, on the third Friday of each month and details can be obtained from the Vicar.

**Young Families Group.** Meetings take place on the second Wednesday of each month in the Church Hall at 7.30 p.m. Activities include talks, demonstrations and visits. Members help in the Church with the flowers and brasses and they work on the floats at Tuliptime each year. They also organise a children's outing. Details from Mrs. Jean Nicholson, telephone Holbeach 22424.

**Darby & Joan Club.** Held every Friday afternoon, 2 p.m. - 4 p.m. at the WI Hall, Park Road, the 120 members play cards, dominoes, bingo etc. They also have community singing, Harvest Festival and Carol Services and a variety of outings and social activities. The chairman is Mrs. A. Hunter, MBE, B.Com., who will be pleased to give further information; telephone Holbeach 3106.

**Old Tyme Dance Club.** The club meets each Thursday evening from September to April and on the first and third Thursdays during the summer months, in the W.I. Hall, Park Road. New members are always welcome and anyone interested should phone either Mr. E. Martin, telephone Holbeach 22002 or Mrs. K. Meader, telephone Holbeach 22859.

**Probus.** This club is for retired professional and businessmen, who meet for lunch at The Milroy Country Club on the third Tuesday of every month. For further information please telephone Mr. H. L. Webb, Holbeach 362132.

**East Elloe Lions Club.** The Lions Club, members of Lions International, meets on the 2nd and 4th Wednesday of each month in the Red Lion. Enquiries to either the President, Eric Bumfrey, telephone Holbeach 362968 or the secretary, Brian Digweed, telephone Holbeach 22448.

# HIX & SON

Our comprehensive service includes:

- Estate Agency.
- Valuations for all purposes.
- Property Surveys.
- Advice on Planning & Development matters.
- Sales of Agricultural Land.
- Farm Implement & Machinery Sales.
- Tenantright Valuations.
- Auctions of Antiques, Furniture & House Contents.
- Sales and lettings of Commercial & Industrial property.

No.28, CHURCH STREET,  
HOLBEACH, SPALDING, LINCOLNSHIRE.  
TEL: (0406) 22777.

# Are you with us yet?



**WOOLWICH**  
EQUITABLE BUILDING SOCIETY

Hix and Son, 28 Church Street, Holbeach. Tel: 22777

**Guides/Brownies.** The two Brownie Packs, two Guide Companies and Ranger Guides hold their meetings in the scout and guide hut to the rear of the Midland Bank. The girls take part in a variety of activities and work towards the many badges that are available. The Brownies go on Pack holidays and the Guides are able to take part in camping. Details can be obtained from :-

Wednesday Brownies	Mrs. Meg Newey	Telephone, Holbeach 22318
Thursday Brownies	Mrs. Jean Martin	Telephone, Holbeach 22374
Wednesday Guides	Miss Beryl Hemsley	Telephone, Holbeach 362169
Thursday Guides	Mrs. Pat Johnston	Telephone, Holbeach 23411
For Rangers	Mrs. Ann Harrington	Telephone, Holbeach 22770

**Scouts.** The 1st Holbeach Scout Group consists of two packs of cub scouts, the Ospreys and the Falcons, and one scout troop. Meetings take place in the scout hut at the rear of the Midland Bank. Ospreys each Monday, 5.30 - 7 p.m., details from Mrs. Waite, telephone Holbeach 22429. The Falcons on Tuesdays from 6 - 7.30 p.m. details from Mrs. Crowden, telephone Holbeach 23108. The Scout Troup meets each Monday and alternate Fridays from 7 - 9 p.m. under the leadership of Mr. Colin Gray.

**Nature Reserve.** The Holbeach and District Nature Reserve Group was set up some 10 years ago and has been mainly concerned with the reclamation of the Fishpond Lane Pit. This work involved the removal of a lot of debris which had accumulated through the years and the group were helped in this by police frogmen. The banks were reinforced in order that trees, shrubs, marsh grasses and plants might become established and the area was fenced. A viewing area was constructed and this is now a popular venue for families who come to feed the many species of wildfowl that congregate on the pond. The group are planning other ventures in the near future and are currently considering a tree planting scheme in conjunction with the Department of the Environment and the County Council.

Anyone interested in joining the group or wishing to offer help in any way should contact the secretary, Miss E. Bailey, telephone Holbeach 23046.

**Friends of the Earth.** Although the group do not hold their meetings in Holbeach, they do receive support from a number of Holbeach residents. The South Holland Branch meets at the White Horse, Spalding on the 3rd Tuesday of every month.

Details can be obtained from Mr. and Mrs. Peacock, telephone Holbeach St. Johns 211.

**WEA Holbeach Branch.** The Workers Educational Association was founded in 1903 by Albert Mansbridge, whose ultimate aim was an educated and civilised democratic society. Holbeach has during the past 12 months offered students courses in literature, nature conservation, Holbeach Railway in its Heyday and Bird Life on the Fens and Marshes. The lectures are given in the library and all are welcome. The next session will start with a coffee evening in September.

The secretary, Mrs. A. E. Hall, to whom enquiries may be made, can be contacted on Holbeach 23344.



Market Day

**Holbeach Community Band.** The band has recently moved into its own premises in Back Lane and is a thriving part of Holbeach life. Having produced an LP record in 1980 the band is now well known in musical circles outside the immediate locality. Many brass band players owe their early training to the hard work put in by the enthusiastic efforts of the more accomplished members. New players are always welcome and details can be obtained from Mr. C. Coupland, telephone Holbeach 22120.

**Gilbert & Sullivan Society.** Formed in 1979, the society has already presented the Pirates of Penzance and Iolanthe. Rehearsals are now in progress for the October presentation of The Mikado, with 36 on stage, in full costume and also an orchestra.

Further information on the society, which meets each Tuesday evening, April to October, in the Church Hall, can be obtained from Mrs. G. Hines, "Rohan", Lowgate, Lutton.

**Choral Society.** Originally established many years ago, the Holbeach Choral Society was revived by the late Rex Self in 1972. There are about thirty members at present and the society are always pleased to welcome more. Anyone who enjoys singing may join the choir (no auditions are held). The society rehearses each week under the baton of musical director, Ivan Lilley. The choir is constantly presenting an exciting and varied programme which in the past has included Handel's Messiah, Gilbert & Sullivan and the traditional carol concerts.

Judith Riley, the assistant secretary, Telephone Holbeach 370590, will be pleased to hear from prospective new members.

**Drama.** The Holbeach Dramatic Society has two productions each year and these usually take place in the Barrington Gate schoolroom. In addition, they also hold weekly theatre workshops.

The society would welcome new members and the person to contact is Andrew Hemsley, Telephone Holbeach 23362.

## THE WOOL CENTRE 81 HIGH ST. HOLBEACH

Stockists of Robin, Sirdar, Patons,  
Wendy and Poppletons yarns.  
Large selection of Tapestries,  
Embroideries & Haberdashery.

Knitting & Crochet to order.

## Holbeach Studio

32 HIGH STREET, HOLBEACH.  
TEL: HOLBEACH 22149

Picture framing, Heat sealing  
Copper & Brassware, China  
& Glass, Greetings Cards.

Open: Mon., Tues., Thurs., Fri., Sat.  
From: 9am to 5.30pm.



## The Mansion House

LICENSED RESTAURANT  
45 HIGH STREET HOLBEACH



Enjoy an intimate  
dining experience  
at reasonable prices.

Our Chef is 'Cordon Bleu' trained.  
Telephone: Holbeach 23533

## E.J. Swepstone & Son FAMILY BUTCHERS



28 High Street,  
Holbeach Tel. 23283

Saracens Head,  
Nr. Holbeach Tel. 23128

Winfrey Avenue,  
Spalding Tel. 4119

FOR MEN & THEIR SONS visit

## CHEERS

THE WELL KNOWN TAILORS  
& OUTFITTERS

MARKET HILL, HOLBEACH.  
Tel: Holbeach 22120.

Over a Century of Service 1876-1981

## DENTON & BIGGADIKE

47- 49 HIGH ST., HOLBEACH, LINCS  
Proprietors: F.Slater, D.Norris, A.W.Grimwood.

Radio, Television &  
Electrical Contractors

High Class Radio, Television & Electrical Appliances.  
Well Equipped Service Department.  
Prompt & Personal Attention to Every Enquiry.

PYE Stockist  
HOTPOINT Centre  
TEL: HOLBEACH 22344.

## DISCOUNT GOLD

For 9ct Jewellery at Trade Prices  
& Gold Parties in your own home

Contact:  
Dawn on Sutton-St-James 415

## SWEPSTONES PHOTO SERVICE

58 - 62 High Street, Holbeach

For everything photographic:  
Films, Cameras, Developing & Printing, etc.  
Photo frames, & albums, large & small

Fancy goods include:  
Figurines, silverplate, crockery, glassware,  
clocks. Gifts for all occasions.

## M. WALTHAM

10 WEST END, HOLBEACH.  
TEL: 23217

WALLPAPER & PAINT SPECIALISTS  
LARGE SELECTION IN STOCK  
BROLAC COLOURIZER 420 SHADES

HAVE YOU SEEN THE  
QUALITY USED CARS  
AT

## C.D. SMITH MOTORS

40 FLEET STREET, HOLBEACH.  
Tel: Holbeach 23636  
*Also: High Quality Spraying  
& Bodywork Repairs*

## SHEER LUXURY FOR YOUR HOME.....

### CARPETS

Over 50 Rolls from Stock  
for PROMT Fitting.  
FITTING FREE  
Over 1,000 Patterns.

### CUSHION VINYL

Over 50 Stock Rolls  
FLOOR TILES - CORK  
CARPET TILES  
WOOD - RUGS



 **WRIGHT**  
FLOORING-FELT ROOFING

12A PARK ROAD, HOLBEACH. Tel: 22379  
11 WINSOVER ROAD, SPALDING. Tel: 69626



The Nature Reserve at Fish-pond Lane

**Holbeach United Services Club Ltd.** This popular club, situated in Church Street, has been much extended in recent years. There is an excellent lounge and music room. The regular dances held on Saturdays and Sundays are well supported. The club also holds bingo sessions on Thursdays. There are four tables in the snooker room and from time to time the club invite top professional players to exhibition matches. The bars are well stocked and the club is one of the social centres of the town.

Details of membership can be obtained from the secretary, Mr. Jack Needham, telephone, Holbeach 22684.

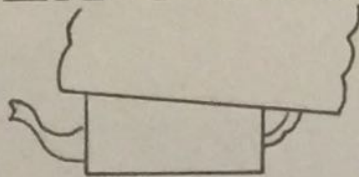
**Young Farmers Club.** Having about 50 members the Holbeach Young Farmers Club is able to take part in a large variety of activities. The club has weekly meetings in the Red Lion from October to April each Thursday. In addition to having guest speakers from all walks of life the members visit factories, shows and other places of interest. The club partakes in competitions against other clubs in a range of sports from Hockey and Football to Tug of War. The Holbeach ladies are in fact Southern Region (Lincolnshire) Champions for tug of war. Quizzes, debates and other intellectual pursuits all go to make up an interesting programme, which also includes such things as pillow fighting, egg throwing and mint jelly making. The minimum age for joining is 14 and once a member has reached the age of 24, he is, in the words of the secretary, considered to be an OAP and whilst still eligible to attend meetings, no longer pays a full subscription.

Anyone interested should 'phone Helen Thacker on Holbeach 363176.



# THE TEA COSY

56 HIGH ST.  
HOLBEACH



*Rain or sun  
Your day is begun  
With a coffee and scone  
At the Tea Cosy*

*With childrens laughter  
And a meal you are after  
Call at the Tea Cosy*

*Tea-Time comes round  
And you're still in Town  
Have a bite and a chat  
At the Tea Cosy*

**Open: Monday to Saturday 9.00-5.00  
Sunday 2.30-6.00**

**Mostly Home Made food or made locally**

# Phyllis Spencer

Prop:  
Beryl Barber

**Holbeach**  
Telephone: 22193

Stockists of suits & dresses by:

**BERKERTEX  
DUMARSEL  
LADIES PRIDE  
DERÉTA  
EASTEX  
CLAUDIE AMOS  
RIDDELLA  
CARL OLSEN**

Knitwear by

**TANYA  
WOLSEY**

**Holbeach Athletic Club.** - Founded May 1949, following a successful Sports at Carters Park in 1948 (5,000 crowd), Holbeach AC has long outgrown its village club image and membership now covers most of South Lincs. After 21 years, when celebrities like Mike Tagg, Brian Kilby and John Whetton graced the Park grass track, the club moved its base to the purpose built Spalding Castle Field cinder track, with equipment and facilities for all track and field events.

The fifties star was Janet Pearson, 1953 WAAA and Northern Junior 100 yards and 150 yards English School Champion, who at the age of 14 once clocked 11.1 seconds for 100 yards. In the sixties two local international athletes emerged in the form of hurdler Stuart Storey (now BBC commentator) and Geoff Capes. Storey competed in the 1968 Mexico Olympics and the 1970 Commonwealth Games.

The successes of Geoff Capes are well known and he went on to smash the British and Commonwealth records, whilst winning a record number of GB International vests (67). In 1980, Geoff thrilled TV audiences when he won the title of Britain's Strongest Man.

During the Seventies, Holbeach AC were Lincs League Men's Champions on no fewer than ten occasions and were also 'Pye Gold Cup' semi-finalists. Local road runners were also successful and won many prizes, including 4 individual and 3 team titles in the 'Holbeach Ten', which is now held as part of the Holbeach Carnival celebrations, each August. The Eastern Counties Cross Country title was won by the team, when they had six men placed in the first 16.

Holbeach Athletic Club promotes, with the Round Table, the Dewhurst Games at Spalding, which in 1979 attracted an estimated crowd of 10,000. The games are to be held again this year in August, when a host of top athletes are expected to appear.

HOME COOKED HAM SLICED  
OFF THE BONE

OUR SPECIALIATY

DANISH AI BACON



**J.N. COLEY & SON**  
HIGH-CLASS GROCERS



ENGLISH SELECTED CHEESE  
CONTINENTAL CHEESES

HEALTH FOODS

41 HIGH STREET

HOLBEACH Tel 22210

**“KASHA”**

FOR

HAIRDRESSING

FASHION

Perms  
Blow Drying  
Trimming  
Shampoo Set  
Colours  
Bleaching  
Tel: 22724

Jeans  
Dresses  
Skirts  
Knitwear  
Teeshirts  
Underwear  
Tel: 24026

Try the  
Farmhouse  
Cooking  
at the

**SWALLOWS  
NEST** Licensed  
Restaurant

'MARYLANDS' HOLBEACH BANK

Closed Mondays & 1st Thursday every month.



Sample from varied menu:

Soup, Roast Beef, 3 Veg., Trifle, Cheese Board  
£3.95 (inc. VAT)

Also salads and toasted sandwiches.

Meetings, Shooting Parties, Weddings, Birthdays,  
Christenings, Funeral Teas.

\* OPEN FOR BOOKINGS ONLY.  
TEL: VERNA, HOLBEACH (0406) 22331

**BOULTERS**

YOUR

LOCAL

NEWS

AGENT

20 HIGH STREET  
HOLBEACH

**ACORN  
FURNITURE**

FURNITURE DESIGN &  
MANUFACTURE

Fitted Cabinets & Wardrobes  
Replacement Kitchen Doors  
Free Design & Estimate Service  
Hardwood & mouldings supplied

---

5 Boston Road, Holbeach, Spalding, Lincs  
Tel: Holbeach (0406) 24102

# GET STONED - NATURALLY!

---

Enjoy the Beauty of a *Real Stone* Fireplace in Your Home.  
Installed by Experts or Supplied to DIY Enthusiasts.

---

Phone: John Ivatt on Moulton Chapel 562.



*H & A Kentell*

**SOLE IMPORTERS**



of an extensive range of high quality  
French, Modern & Reproduction  
chair and settee frames.

**Furniture Restoration & Upholstery  
Equipment & Materials for the home upholsterer.**

4 Victoria Street, Holbeach. Tel: (0406) 24345.



**C S WALTHAM**

28 WESTEND HOLBEACH

**GROCERY · PROVISIONS**

**FRESH CUT BACON · CHEESE · COOKED MEAT**

**LARGE SELECTION BEERS · WINES · SPIRITS**

**Angling.** The South Holland and surrounding district can be said to be something of a mecca for the coarse fisherman, with a large choice of available waters. The Holbeach and District Angling Club holds a variety of competitions for the match angler and has its own club waters.

For full details of membership etc. contact Mr. S. H. Bowell, telephone Holbeach 24035.

**Bowls.** There are two bowls clubs in the town. The Carters Park Bowling Club currently runs two teams, one in the Spalding and District Bowls League and another in the EBA Lincolnshire Section 4. League matches are usually held on Mondays and Thursdays and the club has domestic competitions on other days throughout the season. Refreshments are available at matches from the clubroom.

Subscriptions are £4 per year and anyone interested in joining should contact the secretary/treasurer, Mr. H. P. Bryant, telephone Holbeach 363004.

The United Services Club has its own bowling section (Subscription £3) and has teams competing in the EBA, EBA Triples and EBF Spalding League. The club is extremely successful, having been EBA champions for the past two seasons. Two of its members, the late Mr. Cecil Driffill and Mr. Frank Riley were County Presidents.

Further details of this club are available from Mr. Jack Needham, telephone Holbeach 22684.

**Cricket.** The Holbeach Cricket Club play their matches at Carters Park on Saturday and Sunday afternoons, with the occasional midweek evening game. The team plays in the South Lincs Border League Division 1. The club has an excellent wicket and the pavilion/clubroom is the centre of their social activities.

Details of membership can be obtained from Mr. John Pearl, telephone Holbeach St. Marks 207.

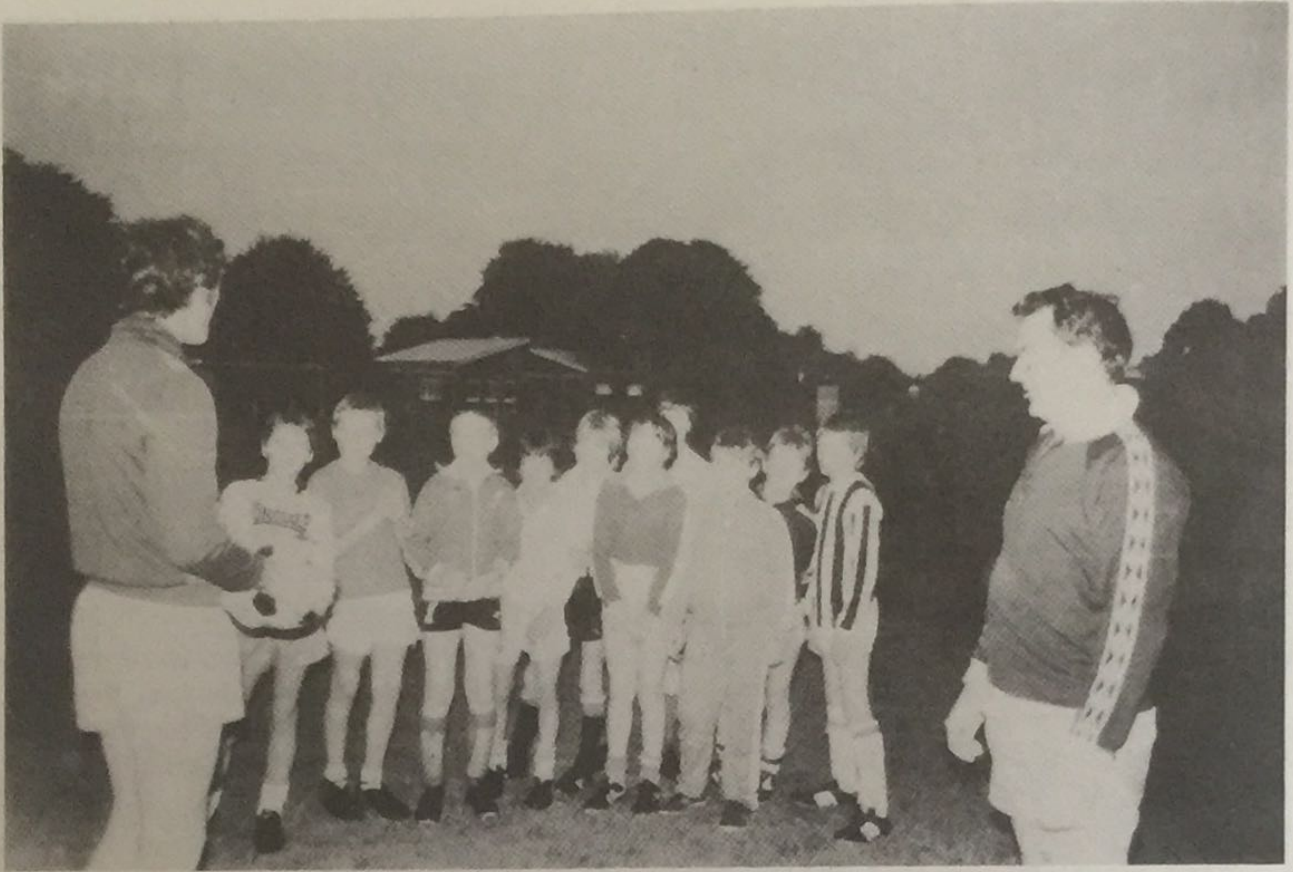
**Golf.** The 'King's Course' has recently opened to the public and an enthusiastic golf club has been formed. The nine hole course, a Par 31, has not yet reached maturity, but the committee and their helpers are working hard to provide Holbeach with an interesting and testing course.

Membership details can be obtained from the club secretary, Mrs. Betty Sellars, telephone Holbeach 371367. Subscriptions are :- Joining fee, £40, annual subscription, £50. Players who are not members of the club can also play the course for a nine hole fee of £1.

**Squash. (Holbeach Sports and Leisure Ltd.).** This newly acquired amenity has proved very popular and waiting lists for membership have been drawn up. At the time of this publication going to press the club had applied for permission to operate a licensed bar. The club has two courts and excellent changing/shower facilities. Cost of a game is 60p. for 40 minutes.

There is a £6 joining fee and membership is £25 per adult, £45 per couple. Reduced rates of membership for young players are 13/14 years - £10 and 15 - 17 years - £15.

Enquiries can be made direct to the club premises in Fish Pond Lane, telephone Holbeach 24114.



**Football.** Holbeach United or the Tigers, as they are popularly known, play at Carters Park. A few seasons ago, the club was very much in the doldrums, but has made an astonishing recovery and can now be considered a most successful club. Last season the first team, which plays in the United Counties League finished the campaign in fourth place, having at one time been very much in the hunt for the top spot. Manager, Lloyd Hudson, is confident that he can build on this and the 1981/2 season could well see a trophy or two coming to Holbeach.

The reserve side, under the leadership of Kip Kierman, is a mixture of young players just making their mark in the game and experienced footballers, who encourage and cajole their young counterparts to new heights. They play in the Peterborough League Division 1 and like the senior squad, finished in fourth spot last term.

The club is justifiably proud of its youth policy, which is the envy of other clubs throughout the district. Upwards of 80 youngsters can be seen learning the skills of the game from Youth Co-ordinator, Russ Delahoy and his colleagues on several evenings each week during the season.

Any young footballers wanting information should contact Russ on Holbeach 22085.

The club has a lively social calendar and a new enlarged clubroom is planned in the not too distant future.

Details of matches can usually be found in the local press and spectators can be assured of a warm welcome from the club.

**BJ's DISCOUNTS**  
44A HIGH STREET  
HOLBEACH

**Your  
Bargain Centre  
for  
Clothing &  
Accessories.**

(ex mail order,  
seconds etc.)

**H.B. MASSEY**  
BOSTON ROAD GARAGE  
HOLBEACH Tel 22005

All classes of repairs  
undertaken  
Car & Commercial  
engine tuning to a high  
standard, by CRYPTON  
electronic machine and  
exhaust gas analyser.



## **Ranger Finance Brokers**

Members of the Merchant Brokers Exchange  
Licensed under the Consumer Credit Act

**RANGER HOUSE, HOLBEACH ST. JOHNS, LINCS**  
TEL: Holbeach St. Johns (0406 34) 213

Mortgages and Remortgages, arranged through Building Societies, Banks, Insurance Companies and Finance Houses.

Bridging loans, before or after contracts have been exchanged.

Top up mortgages.

Personal loans for homeowners and mortgage-payers, unsecured/secured.

Business and Commercial finance. Insurance.

We arrange finance through most of the major lending sources in the country and can virtually ensure being able to offer you the most competitive terms available.

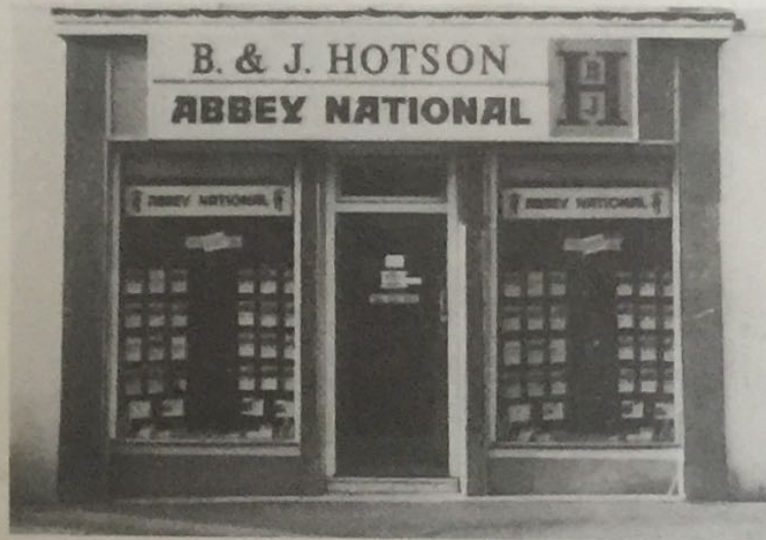
Fast, friendly service. Personal attention at all times.

**AMPLE FUNDS AVAILABLE. £400 to £100,000.**

**FOR SALE**

# **B HOTSON**

HIGH ST. HOLBEACH. Tel. 23831  
THE SIGN OF SERVICE



**SOLD**

# **B HOTSON**

HIGH ST. HOLBEACH. Tel. 23831  
THE SIGN OF SUCCESS