

SPALDING FLOWER PARADE

Organised by The
South Holland Horticultural Assn.



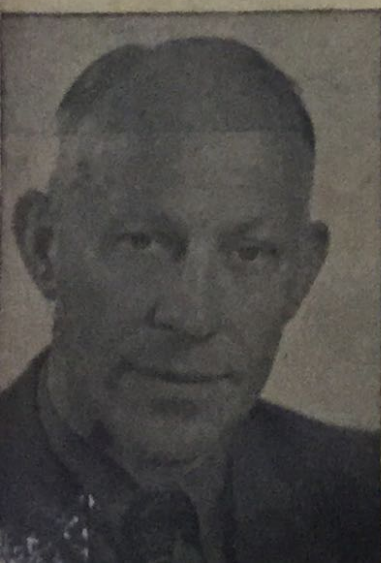
3.0 p.m. SATURDAY, 9th MAY

1959

PRICE ... 6d

Spalding Fl

1. **THE OUTRIDERS**
members of the Vespa Club of Great Britain.
2. **SPALDING "THE FLOWER CENTRE"**
a pedestrian group of members of the St. John Ambulance Brigade.
3. **DECORATED CAR**
of the South Holland Flower Parade Committee represented by the Chairman, F. B. Hanson.
4. **THE KIRTON TOWN BAND**
5. **DECORATED CAR**
of the South Holland Horticultural Association represented by the Chairman, R. G. M. Heath.
6. **PEDESTRIAN GROUP**
from the Young Farmers' Club.
7. **DECORATED FLOAT**
representing the South Holland Horticultural Association carrying three flower girls:—Evelyn Hammond, of Geest Industries Ltd., Ann Foreman, of Spalding Bulb Co. Ltd., Jillian Parker, of J. T. White & Sons Ltd.
8. **PEDESTRIAN GROUP**
representing the Growers' Club.
9. **DECORATED FLOAT**
of the Young Farmers' Club.
10. **DECORATED CAR**
entered by E. H. Wellband Ltd.
11. **DECORATED FLOAT**
entered by Adrian Goemans Ltd.
12. **PEDESTRIAN GROUP**
representing the Growers' Club.
13. **DECORATED FLOAT**
entered by Butlins Ltd.
14. **DECORATED CAR**
of the Flower Publicity Council represented by H. K. Braybrooks
15. **DECORATED FLOAT**
entered by Smedley's Ltd.
16. **PEDESTRIAN GROUP**
of the Church Lads' Brigade.
17. **DECORATED FLOAT**
representing Motors and Tractors Ltd.



Artistic Advisor :

A. W. van Driel

ower Parade

18. **DECORATED FLOAT**
entered by Elsoms (Spalding) Ltd.
19. **THE TULIP QUEEN'S OUTRIDERS**
members of the Vespa Club of Great Britain.
20. **THE TULIP QUEEN'S SCROLL**
carried by bearers from the St. John Ambulance Brigade.
21. **THE TULIP QUEEN'S EMBLEMS**
borne by members of the St. John Ambulance Brigade.
22. **DECORATED FIRE ENGINE**
entered by the Fire Brigade.
23. **DECORATED CAR**
entered by the Tulip Time Committee represented by F. G. Elliott (Chairman) accompanied by runners-up in the Tulip Queen contest.
24. **FLOWER GIRLS**
provided by the Girl Guide Association.
25. **DECORATED CAR**
of the Chairman of Spalding Urban District Council.
26. **FLOWER GIRLS**
provided by the Girl Guides.
27. **DECORATED CARS**
entered by the Tulip Time Committee represented by F. E. Casson and C. F. Ford.
28. **FLOWER GIRLS**
from the Girl Guides.
29. **PAGE BOYS AND GIRLS**
provided by the Boy Scouts, Girl Guides, St. John Ambulance Brigade Cadets.
30. **THE TULIP QUEEN**
(Jill Whitehouse) and her attendants (Valerie Penney and Barbara Dawkes).
31. **THE TULIP QUEEN'S GUARD OF HONOUR**
provided by the Army Cadet Force.
32. **DECORATED CAR**
carrying members of the Tulip Time Committee and runners-up in the Tulip Queen contest.
33. **PEDESTRIAN GROUP**
representing the Civil Defence.
34. **THE PETERBOROUGH HIGHLAND PIPE BAND**

The Tulip Queen :

Jill Whitehouse



SPALDING FLOWER PARADE

The 3rd route ...

Start from the Spalding Cattle Market at 3 p.m.

STATION STREET	—	HALL PLACE
MARKET PLACE	—	HIGH BRIDGE
CHURCH STREET	—	HALMER GATE
QUEEN'S ROAD	—	"THE PIGEON"
WEST ELLOE BRIDGE	—	WEST ELLOE AVENUE
PINCHBECK ROAD	—	KING'S ROAD
WINFREY AVENUE	—	RE-ENTERING THE CATTLE MARKET VIA THE WATER TOWER GATE

Our thanks to all those many helpers who gave their services voluntary to ensure success.