



Horace Saunders with his delivery cart outside his shop in the early 1920's.



A side view of the Saunders home - they called it 'The Sycamores'

The Sneath Family

Edward Sneath first came to Pinchbeck around 1870 when his father George, mother Jane and family moved from Barrowby near Grantham to a farm in Tydd Road. Edward married Alice Cunningham in 1893 and they moved into Pear Tree House where George Edward was born in 1900.

Edward bought The Manor House near Money Bridge in 1916 and it later passed into the hands of his son George Edward. He married Hilda Chappell and they had seven children. During the Second World War, Stanley Chivers (of the Jam Makers family) from Histon Cambridge first brought Percheron horses from France and George Edward bought his first Percheron from him; he was already breeding and working with Shire horses and Suffolks. The Sneath family are now renowned for their Percherons, which they are still breeding, showing and selling all over the world. They have appeared in the Guinness Book of Records several times. The heaviest horse was Saltmarsh Silver Crest who weighed almost 1¼ tons. The Sneath family are also general farmers.

See also Sneath family in 'The Parks'.

PINCHBECK, PINCHBECK NORTH FEN, and COWBIT WASH, near SPALDING, Lincolnshire.
To be SOLD by AUCTION,
By Messrs. J. G. KILLINGWORTH and SON,
At the Red Lion Hotel, Spalding, on Tuesday the 13th day of March, 1894, at 3 for 4 o'clock in the Afternoon (by order of the Trustees for Sale under the Will of the Rev. BASIL BERIDGE, deceased), subject to conditions of sale,

FIVE following very valuable **FREEHOLD** and **COPYHOLD** ESTATES, situate in Pinchbeck, Pinchbeck North Fen, and Cowbit Wash, near Spalding aforesaid, in lots, viz.—

In PINCHBECK.—LOT 1.

A. R. P.

An excellent Family Residence, near Money Bridge, known as the "Manor House," containing drawing, dining, and smoking rooms, entrance-hall, butler's pantry, 2 kitchens, dairy, cellar, 7 bed and dressing rooms, domestic offices, ornamental Garden, Lawn, Fish-pond, 3 Carriage-houses, Stables, Beast-sheds, Barn, Granary, Saddle-house, Cow-house, Loose Boxes, Engine-shed, and other Buildings, and several Closes of rich Feeding Land, in a ring fence, bounded by lands of Lord Brownlow on the east and south, Money Bridge-lane on the west, and the high road leading to Pinchbeck Railway Station on the north, containing together **61 2 39**

There are on lot 1 several magnificent Oak, Ash, and Elm Trees standing, which will be included in the sale.

N.B.—5A. 0R. 5P. of lot 1 is Copyhold of the Manor of Spalding, fine small and certain. The Residue is Freehold, and the whole is Tithe-free.

MANOR HOUSE, MONEY BRIDGE, PINCHBECK.

Important SALE of valuable Household FURNITURE and Effects, including mahogany Tudor bedsteads, iron and French ditto, mattresses, goosecoat feather beds, sets of drawers, toilet tables and washstands in mahogany, &c., commodes, mahogany and cane-seated chairs, blankets, sheets, tablecloths, &c., drawing and dining room furniture, 7-octave piano-forte in rosewood (by Kirkman), large mahogany sideboard, oleographs and prints, cases of stuffed birds, mahogany extending dining table, hair-seated chairs in mahogany, walnut suite in drab damask, cheffonier with marble top and plate-glass back, folding easy and other chairs, chimney glasses in gilt, Brussels and Kidderminster carpets, hall table, hall chairs, barometer, contents of kitchens, pantry, glass and china closets, dairy, Out-door Effects, &c.,



Money Bridge



(Above) Potato pickers at Pear Tree House in the 1890's. In the pony and trap are Edward and his two daughters. Alice, his wife, is next to the trap. Jane Sneath (Edwards mother) can be seen in the black dress in the background.

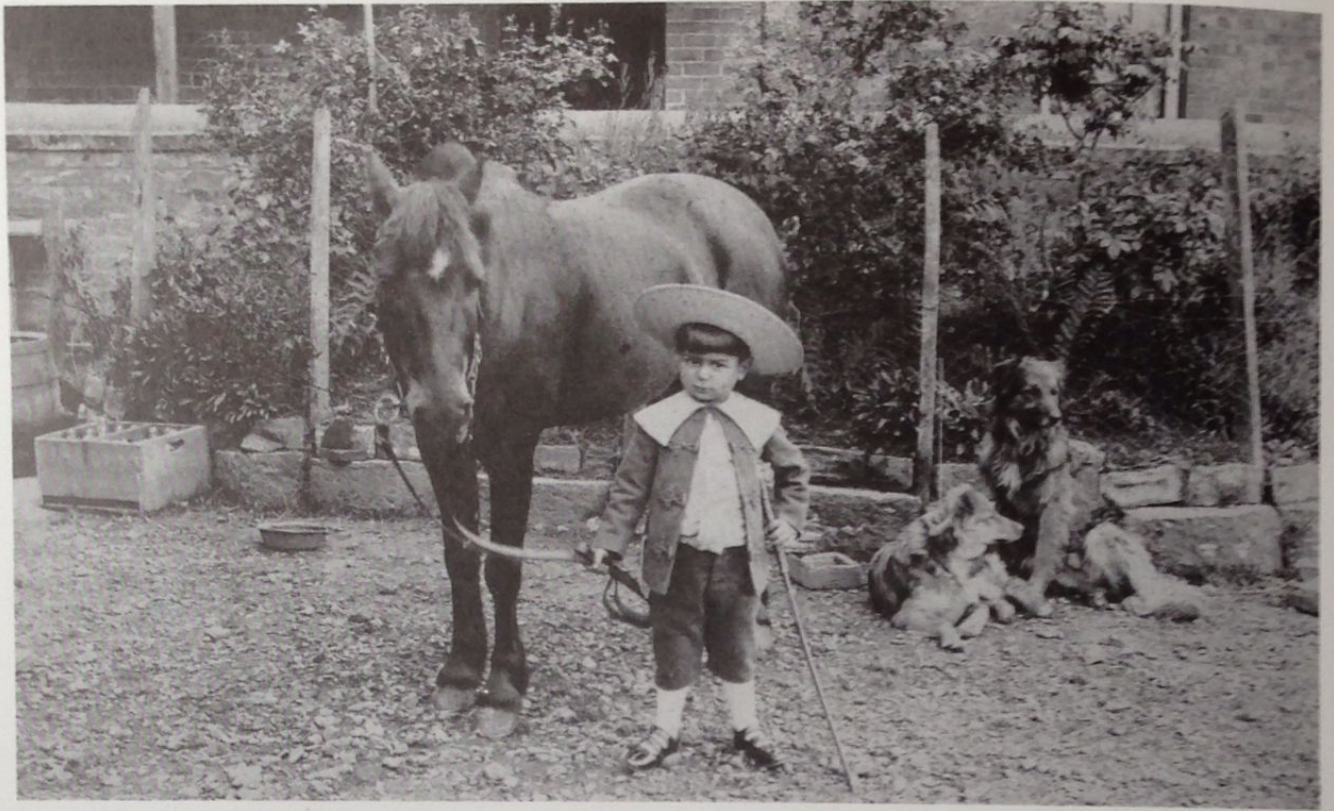
159

(Left) A carriage waiting outside Pear Tree House to take the family to a wedding.

160

(Below) Pear Tree House, Money Bridge Lane.





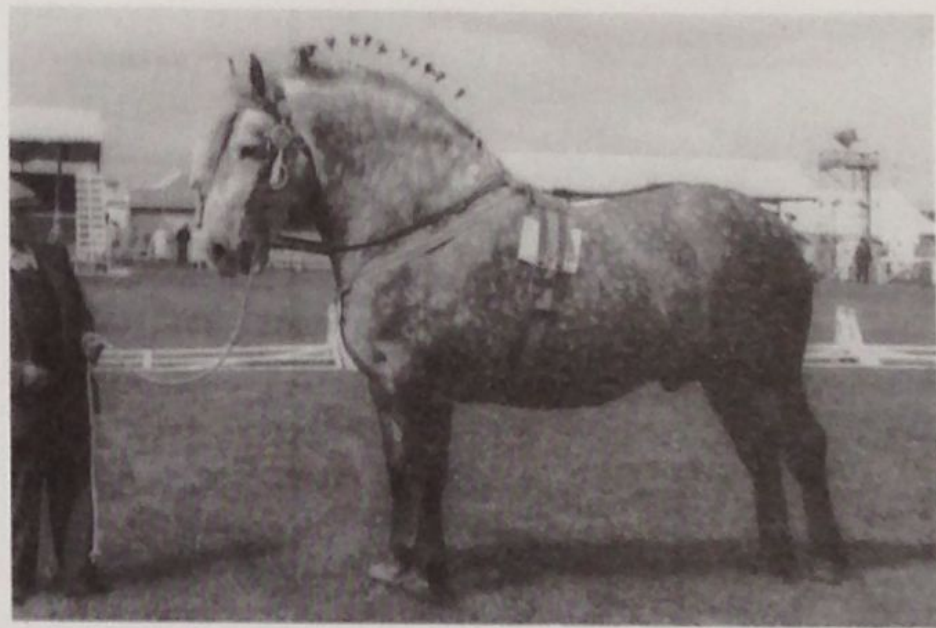
George Edward Sneath with his pony in 1904.



The Sneath family in 1941. (Left to right) Back Row: Harry, Ada, Jack, Edward. Front Row: George Edward, Trevor, Eric, Alice and Hilda.



The first Percheron that George Edward owned.



Saltmarsh Silver Crest.