

Deeping & Spalding

LAND DRAINAGE ACT 1930

20 and 21 Geo. 5. Chap. 44.

*Letter addressed to Governor of the
Fen & Deeping Fen (attached)*

THE RIVER WELLAND CATCHMENT BOARD

SCHEME proposed by THE RIVER WELLAND
CATCHMENT BOARD in pursuance of Sec. 4
(1) (b) of the Act setting up The Deeping Fen,
Spalding and Pinchbeck Internal Drainage Board

27 MAR 1939

LAND DRAINAGE ACT 1930

20 and 21 Geo. 5. Chap. 44.

THE RIVER WELLAND CATCHMENT BOARD

SCHEME proposed by THE RIVER WELLAND
CATCHMENT BOARD in pursuance of Sec. 4
(1) (b) of the Act setting up The Deeping Fen,
Spalding and Pinchbeck Internal Drainage Board

.....

LAND DRAINAGE ACT 1930

RIVER WELLAND CATCHMENT BOARD

1. The Minister of Agriculture and Fisheries, in exercise of the powers conferred upon him by the Land Drainage Act, 1930, and of every other power in that behalf, hereby confirms the Scheme in relation to the Deeping Fen Spalding and Pinchbeck Internal Drainage District (together with the map referred to therein, as amended) submitted to him by the River Welland Catchment Board, under Section 4 (1) (b) of the said Act, a copy of which Scheme is annexed hereto, with the following modifications (which have been incorporated therein) (that is to say):

- (a) **Preamble—Paragraph 4.—Second Line.** After the words "Welland Drainage Board" the words "Newborough Drainage Commissioners" have been inserted.
- (b) **Paragraph 4.**—The number of members has been increased from fourteen to sixteen.
- (c) **Paragraph 6.**—The allocation of members for electoral divisions A, B, C and D has been amended from 7, 5, 1, 1, to 8, 5, 2, 1 respectively.
- (d) **Paragraph 8—Sixth Line.**—After the word "Authorities" the words "on the appointed day" have been inserted.
- (e) **Paragraph 9—Third Line.**—After the words "Confirmation (No. 2) Act, 1922," the words "the powers of the Newborough Drainage Commissioners under the provisions of the Newborough Drainage Acts, 1812, 1819, and 1883," have been inserted.

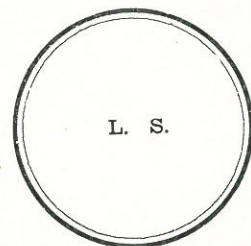
Seventh Line.—The reference to the River Glen Act, 1801, has been amended to read "Spalding Inclosure Act, 1801."

- (f) **Paragraph 11—Third Line.**—The words "within the Internal Drainage District" have been deleted.

2. The Minister hereby appoints the following persons to be the first members of the Internal Drainage Board:—

Lucas Atkinson, Esquire	...	Thorpe Lea Road, Peterborough.
Arthur Herbert Carter, Esq.	...	Tydd Manor, Wisbech.
Walter Freeman Clayton, Esq.	...	Deeping St. Nicholas, Spalding.
Robert Cooke, Esq., Junior	...	Otway House, Pinchbeck, Spalding.
Frank Whitworth Dennis, Esq.	...	Frampton Hall, By Boston.
The Most Honourable The Marquis of Exeter	...	Burghley House, Stamford.
Lewis Layton Perkins, Esq.	...	Baston Fen, Peterborough.
Thomas Arthur Pick, Esq.	...	Deeping St. Nicholas, Spalding.
Thomas Raymond Pick, Esq.	...	Deeping St. Nicholas, Spalding.
Thomas Henry Richardson, Esq.	...	East Skirbeck House, Boston.
Ralph Riddington, Esq.	...	Crowland, Peterborough.
Alfred Harold Smith, Esq.	...	Pinchbeck West, Spalding.
Henry Cyril Cole Tinsley, Esq.	...	West Deeping Manor, near Peterborough.
Edward Earle Everard Welby-Everard, Esq.	...	Gosberton House, near Spalding.
Alfred Willis White, Esq.	...	Daffodil Nurseries, Spalding.
Sidney Worth, Esq.	...	Wingland Grange, Terrington St. Clement, King's Lynn.

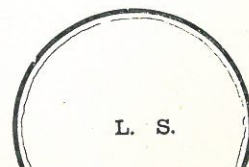
3. The expenses of the Minister in connection with the making and confirmation of this Order shall be borne by the Catchment Board and shall be part of the administrative expenses of the Catchment Board.



IN WITNESS whereof the Official Seal of the Minister of Agriculture and Fisheries is hereunto affixed this twentieth day of February, nineteen hundred and thirty-nine.

(Sgd.) DONALD FERGUSON
Secretary.

I hereby certify this to be a true copy.
(Sgd.) DONALD FERGUSON
Secretary.



LAND DRAINAGE ACT 1930

20 and 21 Geo. 5. Chap. 44

TO

The Right Honourable

The Minister of Agriculture and Fisheries.

SCHEME proposed by THE RIVER WELLAND CATCHMENT BOARD

in pursuance of Sec. 4 (1) (b) of the Act.

THE following Scheme is respectfully submitted by the above Board in obedience to the directions of sub-section (1) (b) of Section 4 of the Land Drainage Act, 1930, making provision for certain matters mentioned in the said sub-section, viz.:—

1. THE constitution of the new internal drainage district, to be known as the Deeping Fen, Spalding and Pinchbeck Internal Drainage District.
2. THE constitution of a drainage board for the said internal drainage District.
3. THE abolition of the Deeping Fen General, the Deeping Fen Fourth District, the Deeping St. Nicholas Washes, the Spalding and Pinchbeck and the Crowland and Cowbit Washes Drainage Areas and the Drainage Authorities thereof, and the transfer of the rights, powers, duties, obligations, liabilities and property of the said Drainage Authorities to the Drainage Board of the said Internal Drainage District.
4. THE abrogation of the powers of the Welland Drainage Board, the Newborough Drainage Commissioners, the South Holland Drainage Trustees and the Glen Bank Trustees so far as such powers are exercisable within or relate to the said Internal Drainage District, and the transfer of the Rights, Powers, Duties, Obligations, Liabilities and Property of the Welland Drainage Board within the said Internal Drainage District to the Drainage Board.
5. CERTAIN matters supplemental thereto and consequent thereon.

AND the Catchment Board submit the Scheme to the Minister of Agriculture and Fisheries for confirmation under Section 4 of the said Act.

SCHEME.

As from a day (hereinafter referred to as "the appointed day") to be appointed by the Minister of Agriculture and Fisheries, the following provisions shall have effect:—

1. THERE shall be constituted an Internal Drainage District, to be known as the Deeping Fen, Spalding and Pinchbeck Internal Drainage District (hereinafter referred to as "the Internal Drainage District").
2. THE Internal Drainage District shall comprise the area shown in pink colour enclosed with a red line on the Map sealed by the Catchment Board in relation to this Scheme.

3. THERE shall be constituted a Drainage Board for the Internal Drainage District, to be known as the Deeping Fen, Spalding and Pinchbeck Internal Drainage Board (hereinafter referred to as "the Internal Drainage Board").
4. THE Internal Drainage Board shall consist of Sixteen Members who, with the exception of the first members, shall be elected in accordance with the provisions of Section 33 of and the Third Schedule to the Land Drainage Act, 1930.
5. THE first members shall be persons appointed by the Minister of Agriculture and Fisheries, and shall hold office until the First day of November in the year following that in which the Order in relation to this Scheme comes into force.
6. THE Internal Drainage District shall be divided into four electoral divisions, as delineated on the 1-inch key map annexed to the 6-inch map sealed by the Catchment Board in relation to this Scheme, and the number of members by which each such division shall be represented on the Internal Drainage Board shall be as follows :—

Electoral Division.		Colour on Map.		Number of Members.	
A.	...	Pink	...	8	
B.	...	Blue	...	5	
C.	...	Yellow	...	2	
D.	...	Brown	...	1	

7. THE Deeping Fen General, the Deeping Fen Fourth District, the Deeping St. Nicholas Washes, the Spalding and Pinchbeck and the Crowland and Cowbit Washes Drainage Areas, which said drainage areas were constituted under the respective Acts of Parliament set out in the First Schedule attached hereto, and the Drainage Authorities thereof (hereinafter referred to as the "said Authorities") shall be abolished.
8. ALL property (particularly that set out in the Second Schedule attached hereto), Rights, Powers, Duties, Obligations and Liabilities (particularly the Loans and Mortgages referred to in the Third Schedule attached hereto) vested in or to be discharged by the said Authorities on the appointed day shall be transferred to the Internal Drainage Board.
9. THE powers of the Welland Drainage Board under the provisions of the Land Drainage Provisional Order Confirmation (No. 2) Act, 1922, the powers of the Newborough Drainage Commissioners under the provisions of the Newborough Drainage Acts, 1812, 1819 and 1883, the powers of the South Holland Drainage Trustees under the provisions of an Act of Parliament 57 Geo. III. Cap. 69 (1817) and the powers of the Glen Bank Trustees under the provisions of the Spalding Inclosure Act, 1801, and the River Glen Act, 1916 (which Authorities together with the said Authorities are hereinafter referred to as "the existing Authorities") shall, so far as they are exercisable within or relate to the Internal Drainage District, be abrogated and cease to have effect.
10. ALL property, Rights, Powers, Duties, Obligations and Liabilities vested in or to be discharged by the Welland Drainage Board, to the extent to which the same relate to matters or things within the Internal Drainage District, are hereby transferred to the Internal Drainage Board, provided that in the event of any asset or liability being applicable only partially in relation to the Internal Drainage District an equitable adjustment shall be made and only the due proportion shall be transferred to and vested in the Internal Drainage Board, and in the event of a dispute arising between the Internal Drainage Board and the Welland Drainage Board the same shall be referred to and decided by the Minister of Agriculture and Fisheries, whose decision shall be final.
11. THE power to collect all rents due to and all rates (including arrears of rates) already made by the existing Authorities or any of them in respect of any lands in the Internal Drainage District and not collected by the appointed day, together with the Powers and Duties of the existing Authorities in relation thereto shall be transferred to the Internal Drainage Board.

DRAINAGE AREA

ACT

DEEPING FEN GENERAL

19 and 20 Vict. Cap. LXV.

An Act to consolidate the Drainage Trusts in Deeping Fen in the County of Lincoln, and for other purposes relating to the said Fens.

DEEPING FEN FOURTH DISTRICT

41 Geo. III. Cap. CXXVIII.

An Act for draining, dividing, allotting and enclosing Deeping, Langtoft, Baston, Spalding, Pinchbeck and Cowbit Commons, within the Parts of Kesteven and Holland, in the County of Lincoln and also for draining Crowland Common or Goggushland, certain lands and grounds in the Parishes of Bourne, and Thurlby, adjoining or lying contiguous to the North Bank of the River Glen, and certain enclosed lands in Deeping Fen, and in the Parishes of Spalding and Pinchbeck, adjoining to the said Commons, and lying between the Rivers Glen and Welland: and also for rendering more effectual several Acts of Parliament heretofore passed for draining and preserving the several Lands, Grounds and Commons hereinbefore mentioned, or certain parts thereof.

DEEPING ST. NICHOLAS WASHES

36 Vict. Ch. XXIV.

An Act to confirm a Provisional Order under The Land Drainage Act, 1861, relating to Deeping Fen.

SPALDING AND PINCHBECK

2. William IV. Sess. 1831-2.

An Act for the better drainage of certain Lands in the Parishes of Spalding and Pinchbeck.

THE CROWLAND AND COWBIT WASHES

10 and 11 Vict. Sess. 1847.

An Act for the better drainage of Lands called Crowland Washes and Fodder Lotts Cowbit Wash and Deeping Fen Wash.

Situation of Property.	Description of Property.
PODE HOLE	Two Engine Houses, Machine Shop, Smithy, &c., together with Engines, Pumps, Machine Tools and General Plant. Two Store Sheds, with Pile Drivers, Piles and general drainage plant stored therein. Engineer's House and Outbuildings. North Drove Cottage: Let to H. Garwell. "Fisherman's Arms" Public House and Outbuildings: Let to Messrs. Soames and Company, Limited.
SURFLEET RESERVOIR	Vernatts Sluice. Sluicekeeper's Cottage. Store Shed and Contents. Ship Inn Public House: Let to A. E. Smith.
LITTLE LONDON, Spalding	Dwelling House and Outbuildings: Let to Wm. Arthur Scott. Stores Shed and Plant and Materials stored therein.
DEEPING ST. JAMES	Stores Shed with Plant and Materials therein, at Barron's Bridge on Cross Drain Bank. A parcel of Land at Lynch Field.
ALL BANKS AND SLIPES vested in the Deeping Fen Drainage General Trustees	

THE THIRD SCHEDULE ABOVE REFERRED TO
Particulars of Loan and Mortgage

Name of Drainage Authority Borrowing.	Name of Mortgagees.	Amount of Original Loan.	Amount of Loan outstanding on date of Scheme.	Date when borrowed.	Present rate of Interest.	Period of Loan and method of repayment.	For what purpose raised.
Deeping Fen General Drainage Trustees.	The Custodian Trustees Salop & West Counties Savings Bank.	£5250	£4519 10 2	12/11/34	3½%	12 years half-yearly instalments of Principal and Interest over that period.	In respect of new Engine at Pode Hole. Boarden Bridge.
do.	do.	£2500	£2366 16 3	9/3/36	3½%	15 years equal yearly payments of Principal and Interest over that period.	New Dredger.
Spalding and Pinchbeck Drainage Trustees.	Trustees of Arthur Jalland Stiles, decd.	£500	£500. Less Sinking Fund as at 31/3/37	17/10/33	5%	10 years Annual instalments of Principal and Interest.	New Sluice adjoining the River Glen at Surfleet Reservoir.
Deeping Fen Fourth District Drainage Trustees.	Messrs. Barclays Bank, Limited.	£3500	£1405 6 0	10/8/20	5%	25 years Annual instalments of Principal and Interest.	New Engine at Pinchbeck.