

LAND DRAINAGE ACT 1930

20 and 21 Geo. 5. Chap. 44.

THE RIVER WELLAND CATCHMENT BOARD

SCHEME proposed by THE RIVER WELLAND
CATCHMENT BOARD in pursuance of Sec. 4
(1) (b) of the Act setting up The Bourne and
Thurlby Internal Drainage Board

29 January 1942

LAND DRAINAGE ACT 1930

20 and 21 Geo. 5. Chap. 44.

THE RIVER WELLAND CATCHMENT BOARD

SCHEME proposed by THE RIVER WELLAND
CATCHMENT BOARD in pursuance of Sec. 4
(1) (b) of the Act setting up The Bourne and
Thurlby Internal Drainage Board

.....

LAND DRAINAGE ACT 1930

20 and 21 Geo. 5. Chap. 44.

TO

The Right Honourable

The Minister of Agriculture and Fisheries.

**SCHEME proposed by THE RIVER WELLAND CATCHMENT BOARD in
pursuance of Sec. 4 (1) (b) of the Act.**

THE following Scheme is respectfully submitted by the above Board in obedience to the directions of sub-section (1) (b) of Section 4 of the Land Drainage Act, 1930, making provision for certain matters mentioned in the said sub-section, viz :—

1. THE constitution of a new Internal Drainage District to be known as the Bourne and Thurlby Internal Drainage District.
2. THE constitution of a Drainage Board for the said Internal Drainage District.
3. THE abolition of the Bourne South Fen and Thurlby Fen Drainage District and the Drainage Board thereof and of the area under the jurisdiction of the Bourne South Fen Interior Drainage Commissioners and the Commissioners thereof and the transfer of the rights, powers, duties, obligations, liabilities and property of the said Board and said Commissioners to the Drainage Board of the said Internal Drainage District.
4. THE abrogation of the powers of the Welland Drainage Board and the Glen Bank Trustees so far as they are exercisable within the area of the said Internal Drainage District and the transfer of the rights, powers, duties, obligations, liabilities and property of the Welland Board to the Drainage Board of the said Internal Drainage District.
5. CERTAIN matters supplemental thereto and consequent thereon.

AND the Catchment Board submit the Scheme to the Minister of Agriculture and Fisheries for confirmation under Section 4 of the said Act.

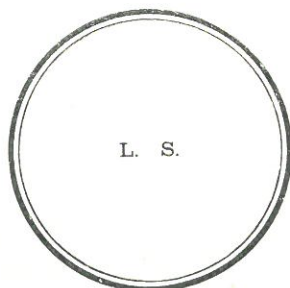
SCHEME.

As from a day (hereinafter referred to as "the appointed day") to be appointed by the Minister of Agriculture and Fisheries the following provisions shall have effect.

1. THERE shall be constituted an Internal Drainage District to be known as the Bourne and Thurlby Internal Drainage District (hereinafter referred to as "the Internal Drainage District").
2. THE Internal Drainage District shall comprise the area shown in Pink Colour enclosed with a red line on the Map sealed by the Catchment Board in relation to this Scheme.
3. THERE shall be constituted a Drainage Board for the Internal Drainage District to be known as the Bourne and Thurlby Internal Drainage Board (hereinafter referred to as "the Internal Drainage Board").

4. THE Internal Drainage Board shall consist of Nine Members who with the exception of the first members shall be elected in accordance with the provisions of Section 33 and of the Third Schedule to the Land Drainage Act, 1930.
5. THE first members shall be persons appointed by the Minister of Agriculture and Fisheries and shall hold office until the First day of November in the year following that in which the Order in relation to this Scheme comes into force.
6. THE Bourne South Fen and Thurlby Fen Drainage District and the Drainage Board thereof constituted under the Land Drainage Provisional Order Confirmation (No. 3) Act, 1910, and the area under the jurisdiction of the Bourne South Fen Interior Drainage Commissioners and the Commissioners thereof, set up under the provisions of an Act passed in the 12th year of the reign of His Majesty King George III and the Award made thereunder, shall be abolished.
7. ALL property (particularly the Pumping Station situate near to the River Glen) rights, powers, duties, obligations and liabilities vested in or to be discharged by the Bourne South Fen and Thurlby Fen Drainage Board and the Bourne South Fen Interior Drainage Commissioners are hereby transferred to the Internal Drainage Board.
8. THE powers of the Welland Drainage Board under the provisions of the Land Drainage Provisional Order Confirmation (No. 2) Act, 1922, and the powers of the Glen Bank Trustees under the provisions of the Spalding Inclosure Act, 1801, and the River Glen Act, 1916 (which Authorities, together with the Bourne South Fen and Thurlby Fen Drainage Board, and the Drainage Board, and the Bourne South Fen Interior Drainage Commissioners, are hereinafter referred to as "the existing Authorities") so far as they are exercisable within or relate to the Internal Drainage District shall be abrogated and cease to have effect.
9. ALL property, rights, powers, duties, obligations and liabilities vested in or to be discharged by the Welland Drainage Board to the extent to which the same relate to matters or things within the Internal Drainage District are hereby transferred to the Internal Drainage Board provided that in the event of any asset or liability being applicable only partially in relation to the Internal Drainage District an equitable adjustment shall be made and only the due proportion shall be transferred to and vested in the Internal Drainage Board and in the event of a dispute arising between the Internal Drainage Board and the Welland Drainage Board the same shall be referred to and decided by the Minister of Agriculture and Fisheries whose decision shall be final.
10. THE power to collect all rents due to and all rates (including arrears of rates) already made by the existing Authorities or any of them in respect of any lands in the Internal Drainage District and not collected by the appointed day together with the powers and duties of the affected drainage authorities in relation thereto shall be transferred to the Internal Drainage Board.

In Witness whereof the River Welland Catchment Board have caused their Common Seal to be hereunto affixed this 29th day of January, One Thousand Nine hundred and forty in the presence of :—



(Signed)
E. E. WELBY EVERARD,
Chairman.

(Signed)
LEOPOLD C. HARVEY.