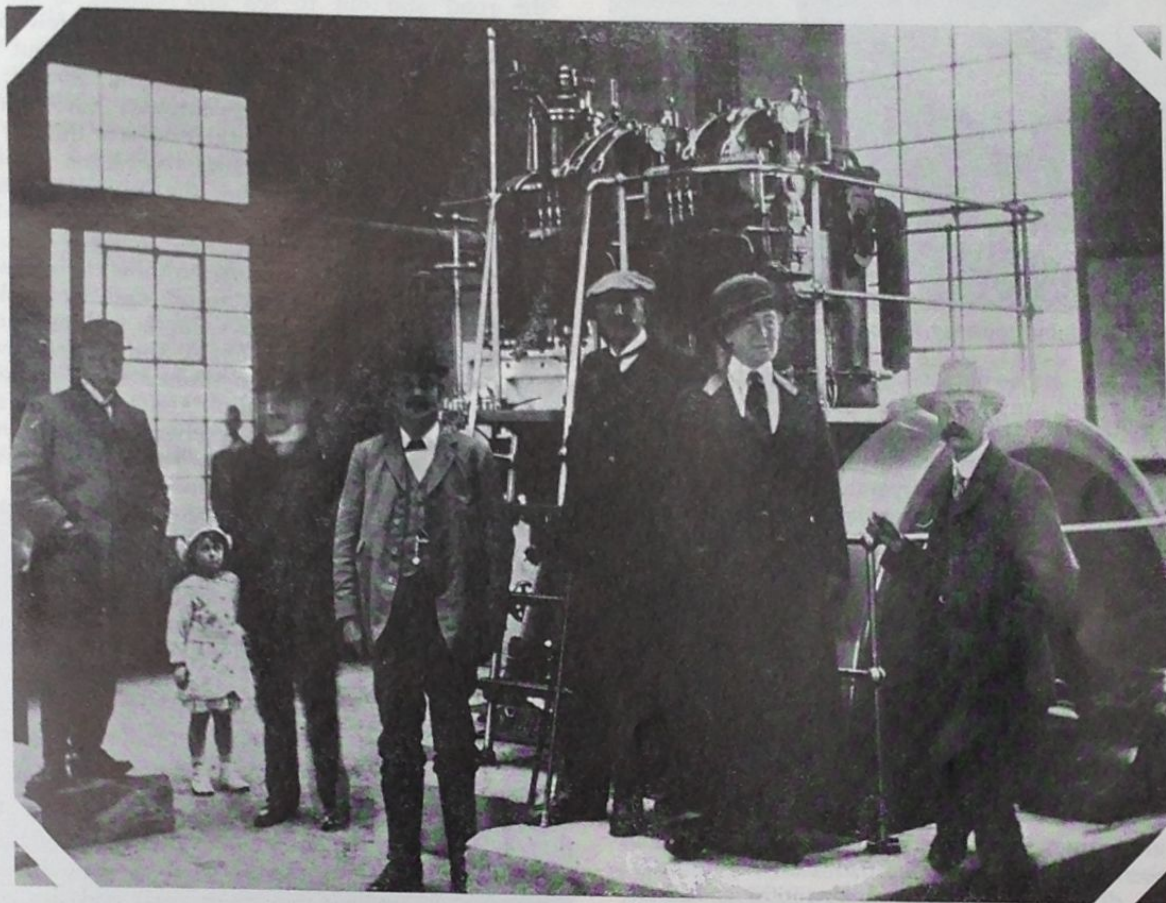


Lincolnshire Life Album



PODE HOLE PUMPING STATION, SPALDING

Steam pumping for the drainage of Deeping Fen was inaugurated in 1824-27 with the installation of the Holland and Kesteven pumps which served for a century. They were supplemented in 1914 by the Elloe, a 100hp 2-cylinder Mirrlees air-blast injection diesel engine driving a Gwynnes 36 inch diameter twin parallel Francis Vine centrifugal pump, and again in 1920 by the Welby of similar capacity and make. The latter pumps were demolished in 1956 and replaced by the Adventurers Pumps, and the Deeping St Nicholas Pumps were commissioned in 1965.

Our photograph, supplied by Mr N. S. Cooke from his father's effects, shows the Mirrlees diesel engine, probably the Welby although the date of the photograph is not known. Standing in front are Lord Kesteven (in cap) and Lady Kesteven with Mr Frank Cooke (Deeping Fen Drainage Trustee) and Mr H. Bain (Superintendent Engineer).

Perhaps readers may be able to supply more information. And who was the little girl, to be there on such an occasion?